

# 413 W. IDAHO STREET

— BOISE, ID 83702

PRIME, DOWNTOWN OFFICE SPACE FOR LEASE



**NICK SCHUITEMAKER** CCIM  
208.947.0802 | [nick@tokcommercial.com](mailto:nick@tokcommercial.com)

## LEASE DETAILS

<b>SUBMARKET</b>	Downtown	<b>TI ALLOWANCE</b>	Negotiable
<b>BLDG TYPE</b>	Office	<b>ZONING</b>	MX-5
<b>BLDG SIZE</b>	15,170 SF	<b>LEASE TERM</b>	Negotiable
<b># OF FLOORS</b>	3	<b>LEASE TYPE</b>	FSEJ

## AVAILABLE SPACE

SPACE	RSF	RATE
Suite 101	2,121 SF	\$18.00/SF
Suite 202	1,569 SF	\$18.00/SF

## PROPERTY HIGHLIGHTS

Downtown Boise location.

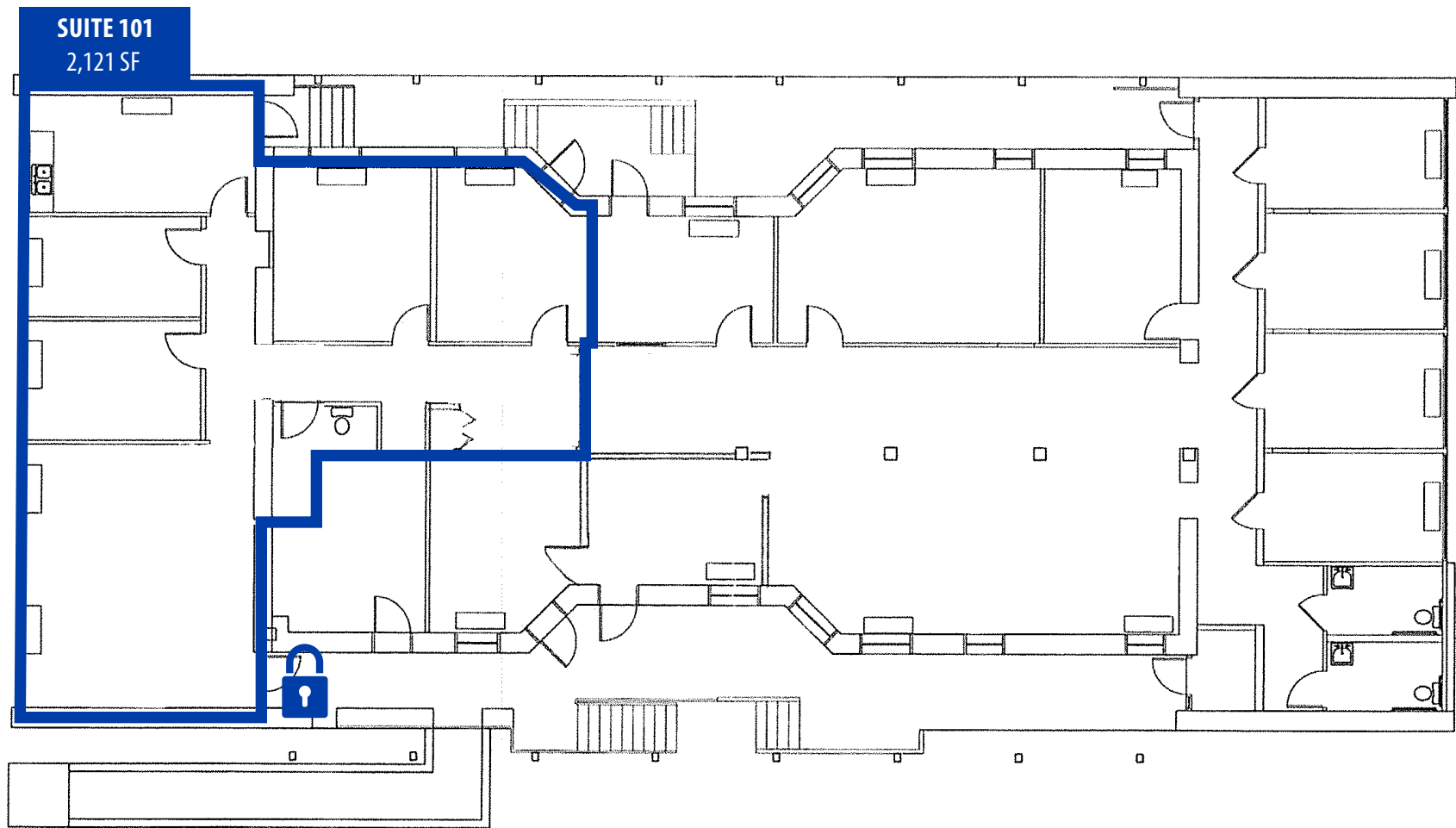
In-suite restroom and breakroom.

Large offices with abundant natural light.

Visitor and reserved surface parking available.

**Excellent value PSF in Downtown Boise. Office avg: \$23/SF.**

Walking distance to the Capitol Building, St. Luke's, restaurants, shopping, and other professional services.



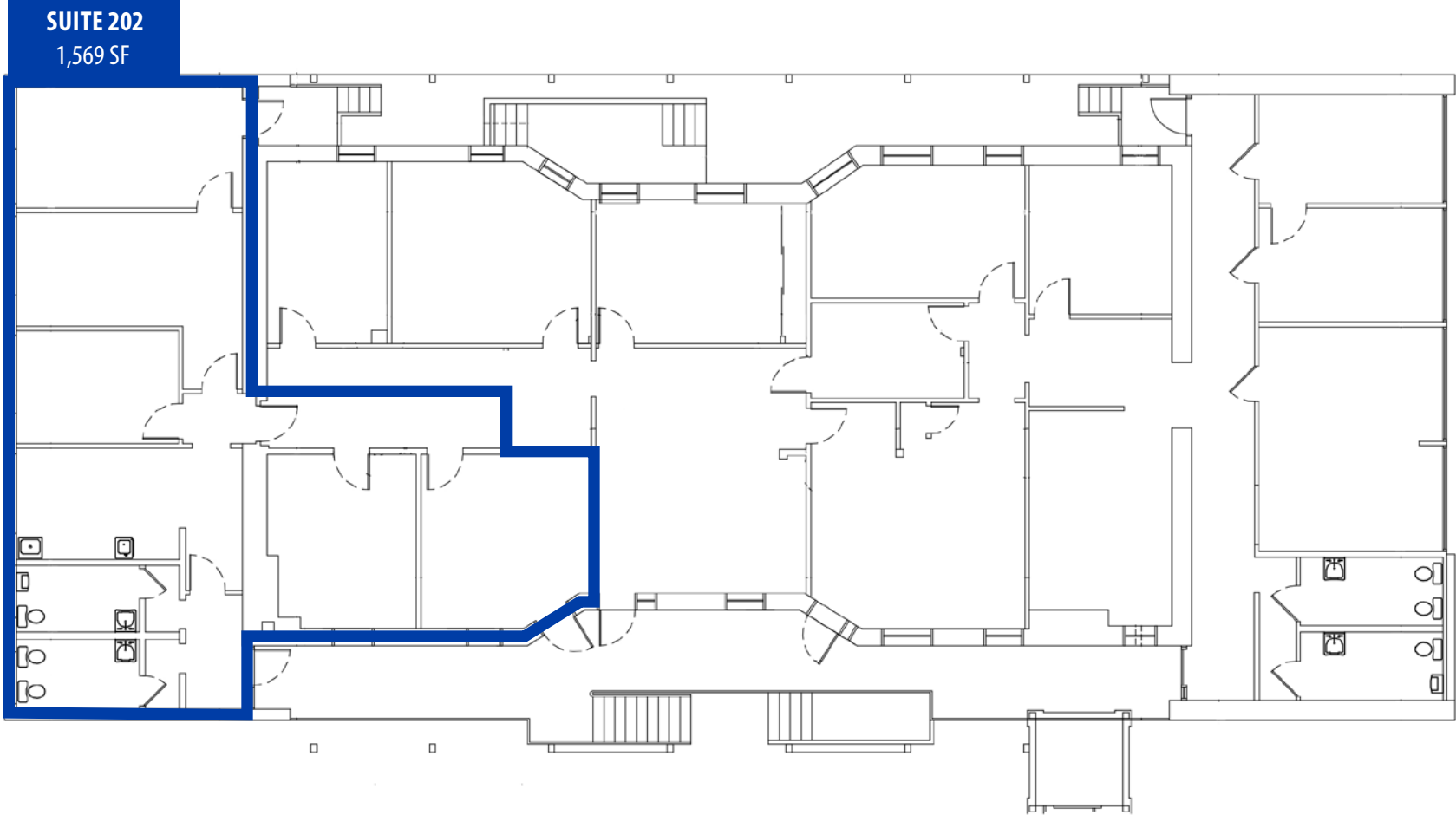
SPACE	RSF	RATE
Suite 101	2,121 SF	\$18.00/SF
<b>AVAILABLE</b>	Immediately	

**413 IDAHO**

UPDATED: 12.2.2025

THIS PROPERTY IS EXCLUSIVELY MARKETING BY TOK BOISE LLC DBA TOK COMMERCIAL  
This information was obtained from sources believed reliable but cannot be guaranteed. Any opinions or estimates are used for example only.

**TOK**COMMERCIAL.COM



SPACE	RSF	RATE
Suite 202	1,569 SF	\$18.00/SF
AVAILABLE	Immediately	

**413 IDAHO**  
UPDATED: 12.2.2025

THIS PROPERTY IS EXCLUSIVELY MARKETING BY TOK BOISE LLC DBA TOK COMMERCIAL  
This information was obtained from sources believed reliable but cannot be guaranteed. Any opinions or estimates are used for example only.





## 413 IDAHO

UPDATED: 12.2.2025

THIS PROPERTY IS EXCLUSIVELY MARKETING BY TOK BOISE LLC DBA TOK COMMERCIAL This information was obtained from sources believed reliable but cannot be guaranteed. Any opinions or estimates are used for example only.