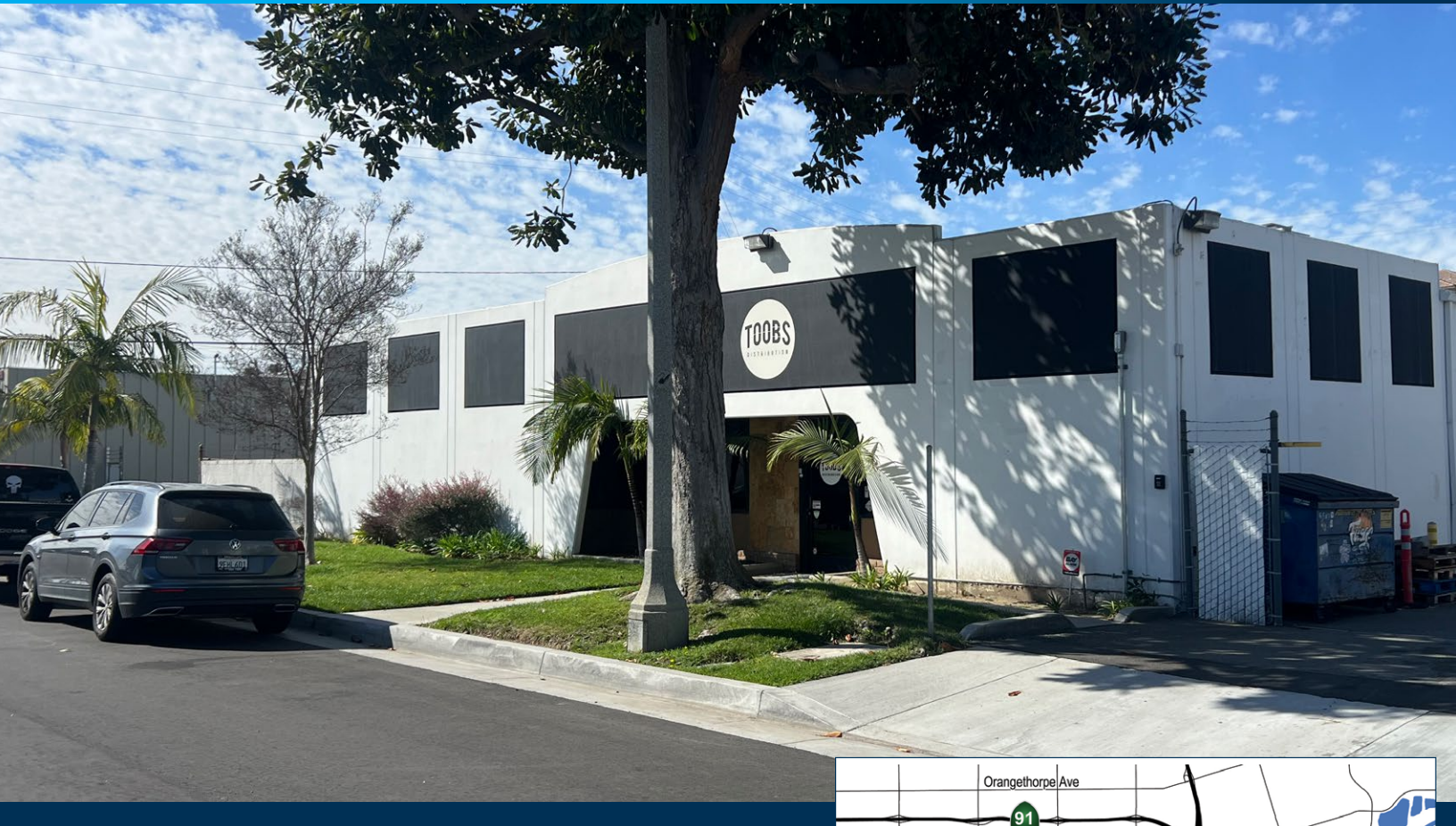


FOR LEASE

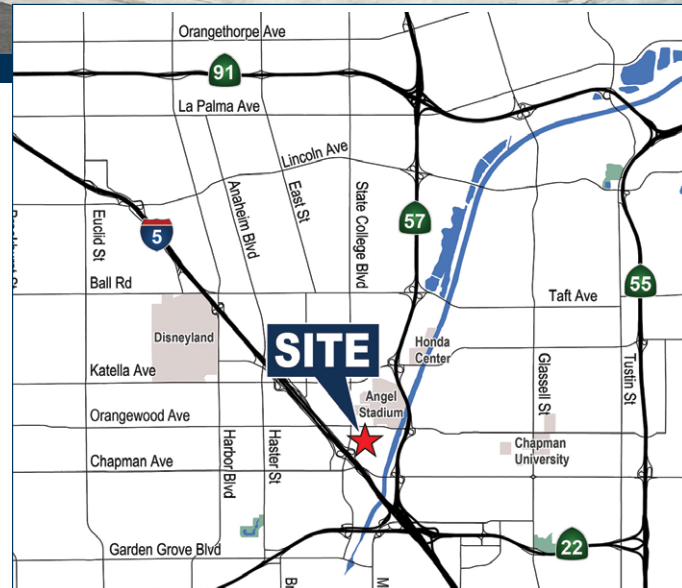
±8,400 SF FREESTANDING INDUSTRIAL PROPERTY

2141 SOUTH DUPONT DRIVE | ANAHEIM, CA



PROPERTY FEATURES

- ± 8,400 SF Freestanding Industrial Building
 - ± 2,000 SF of Single Story Office Space
 - ± 6,400 SF of Warehouse Space
- 2 Ground Level Doors (12'W X 12'H)
- Large Secured Private Fenced Yard Area**
- 400 Amps of 120-208 Voltage (Verify)
- ±14' Warehouse Clearance
- Located Across From Anaheim Stadium & Within Close Proximity to Title Mile
- Additional Street Parking
- Immediate Access to the **57**, **55**, **91**, **5** & **22** Freeways



Exclusively Offered By:

Voit

REAL ESTATE SERVICES

2400 E. Katella Avenue, Suite 750 | Anaheim, CA 92806
License #01991785 www.voitco.com



JASON DIROCCO

Senior Vice President | Partner

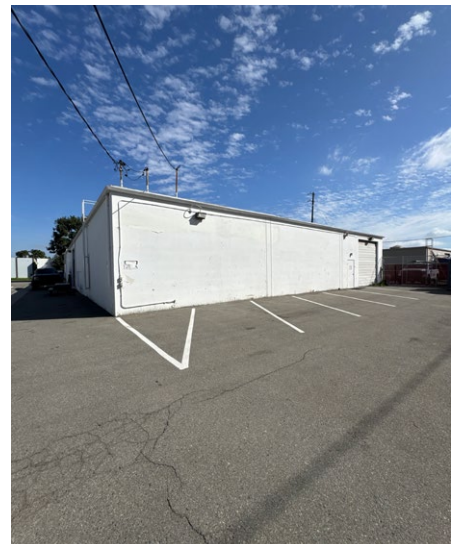
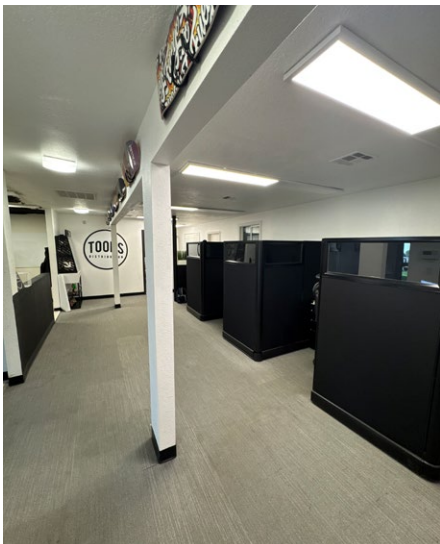
(714) 935-2305

JDiRocco@voitco.com

License #01842301

2141 SOUTH DUPONT DRIVE | ANAHEIM, CA

AERIAL



Exclusively Offered By:

Voit

REAL ESTATE SERVICES

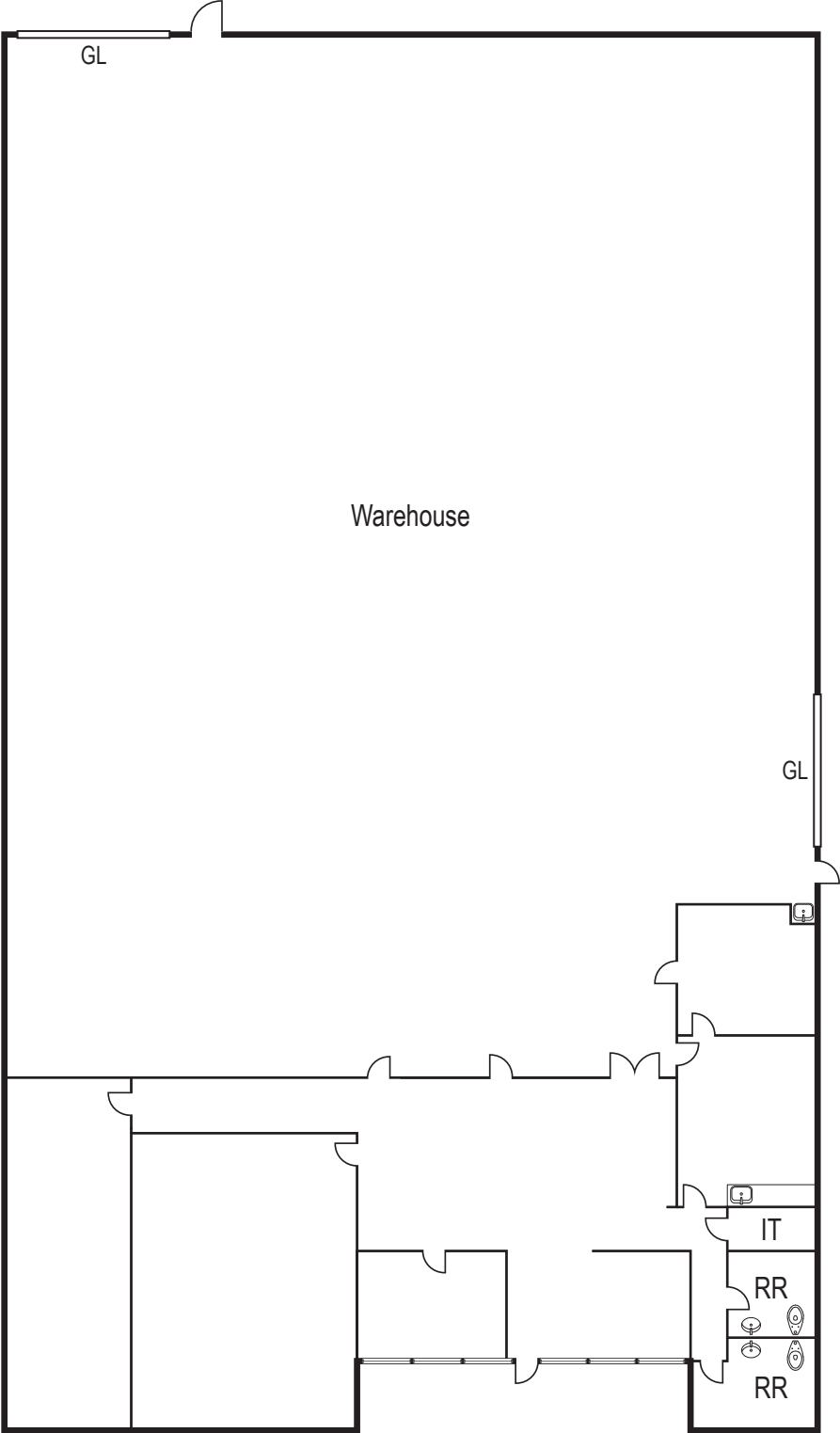
2400 E. Katella Avenue, Suite 750 | Anaheim, CA 92806
License #01991785 www.voitco.com



JASON DIROCCO
Senior Vice President | Partner

(714) 935-2305
JDiRocco@voitco.com
License #01842301

FLOOR PLAN



Exclusively Offered By:



REAL ESTATE SERVICES
2400 E. Katella Avenue, Suite 750 | Anaheim, CA 92806
License #01991785 www.voitco.com



JASON DIROCCO
Senior Vice President | Partner

(714) 935-2305
JDiRocco@voitco.com
License #01842301