

LONDON GROVE WEST

AVONDALE, PENNSYLVANIA 19311

OWNED & LEASED BY



FUTURE OFFICE & RETAIL PENDING APPROVAL!

FOR LEASING INFORMATION CALL

- OFFICE 1:** 58,125 SF
THREE STORIES
19,375 SF FLOOR PLATES
- OFFICE 2:** 58,125 SF
THREE STORIES
19,375 SF FLOOR PLATES
- RETAIL:** 35,625 SF BUILDING
DIVISIBLE
- PAD SITE** 5,000 SF OFFICE/BANK

ROB STENTA

302-999-0708

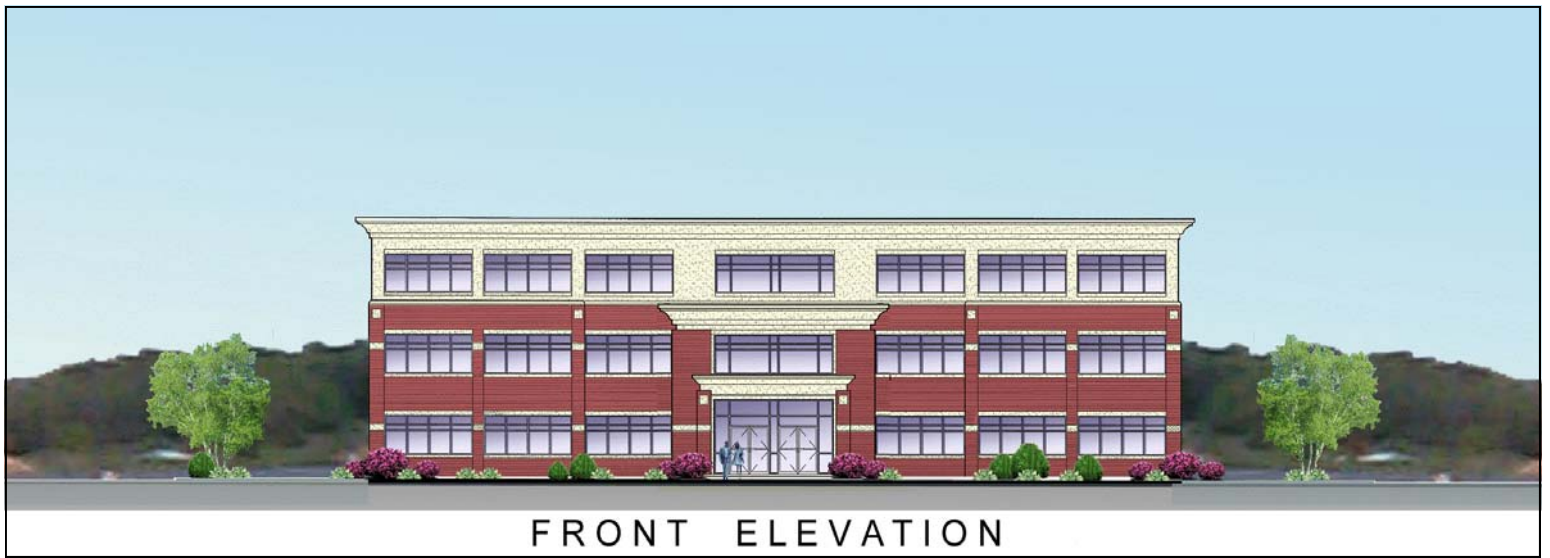
RSTENTA@PETTINARO.COM

PETTINARO MANAGEMENT, LLC

234 N JAMES ST

NEWPORT, DE 19804

WWW.PETTINARO.COM



FRONT ELEVATION

