

For Lease  
±881 - 9,581 SF  
Professional Office Suites



# First Citizens Bank Building

2170 Ashley Phosphate Road, North Charleston, SC

**NAI**Charleston

## Building Details

- Excellent North Charleston location, between I-26 & Rivers Ave
- Ample on-site parking & prominent signage
- Recent exterior renovations
- Available suites:

Suite 300 - Full Floor/Move-in Ready!	±9,554 SF	\$20.50/SF, Full Service
Suite 400 - Move-in Ready!	±1,658 SF	\$20.50/SF, Full Service
Suite 404 - Move-in Ready!	±884 SF	\$1,437/Month, Full Service
Suite 500 - Full Floor	±9,581 SF	\$20.50/SF, Full Service
Suite 603 - Open Floor Plan	±1,134 SF	\$20.50/SF, Full Service
Suite 604 - Available 6/1/25	±1,484 SF	\$22/SF, Full Service
Suite 605 - Shell Condition	±881 SF	\$1,505/Month, Full Service
Suite 700 - Full Floor	±9,559 SF	\$20.50/SF, Full Service

CONTACT BROKER FOR MORE INFO

Scott P. Peevy, CCIM  
 +1 843.637.1974  
 speevy@naicharleston.com

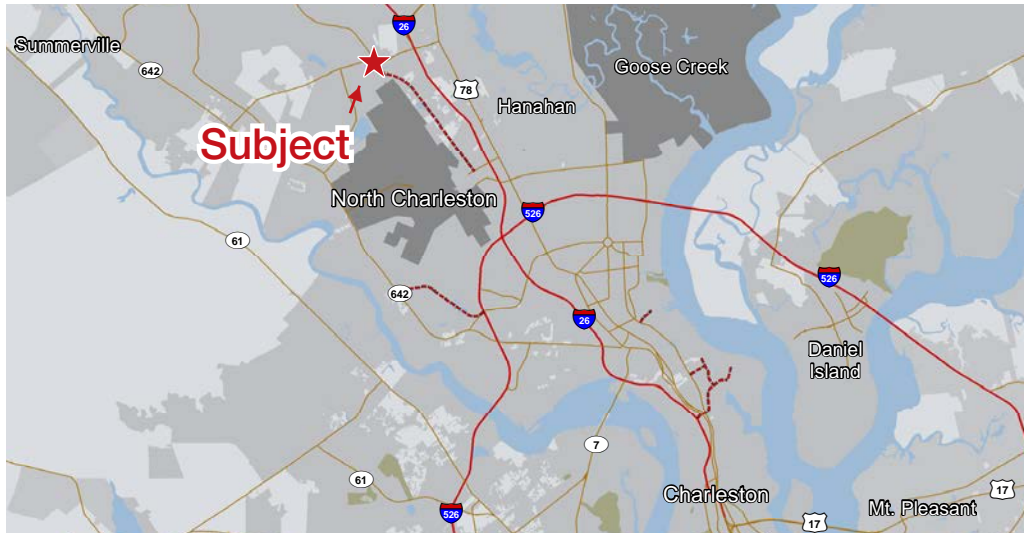


*DISCLAIMER: The information contained herein has been given to us by the owner of the property or other sources we deem reliable. We have no reason to doubt its accuracy, but we do not guarantee it. All information should be verified prior to purchase or lease.*

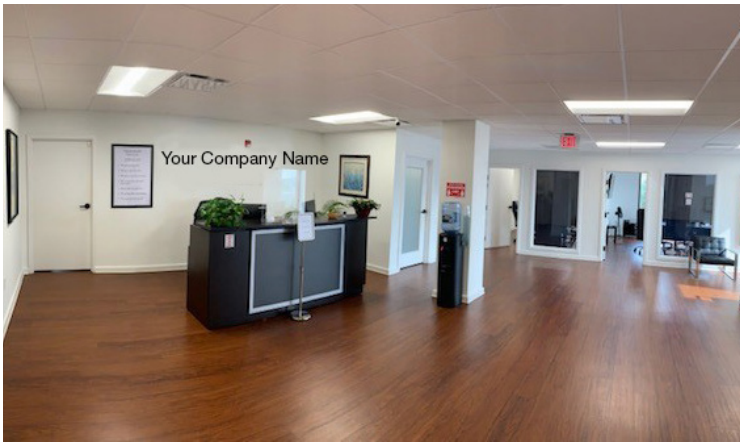
141 Williman Street  
 Charleston, South Carolina 29403  
 +1 843.720.4944  
[naicharleston.com](http://naicharleston.com)



# Property Photos & Location



# Third Floor Photos



Suite 404  
Photos



# Sixth Floor Photos

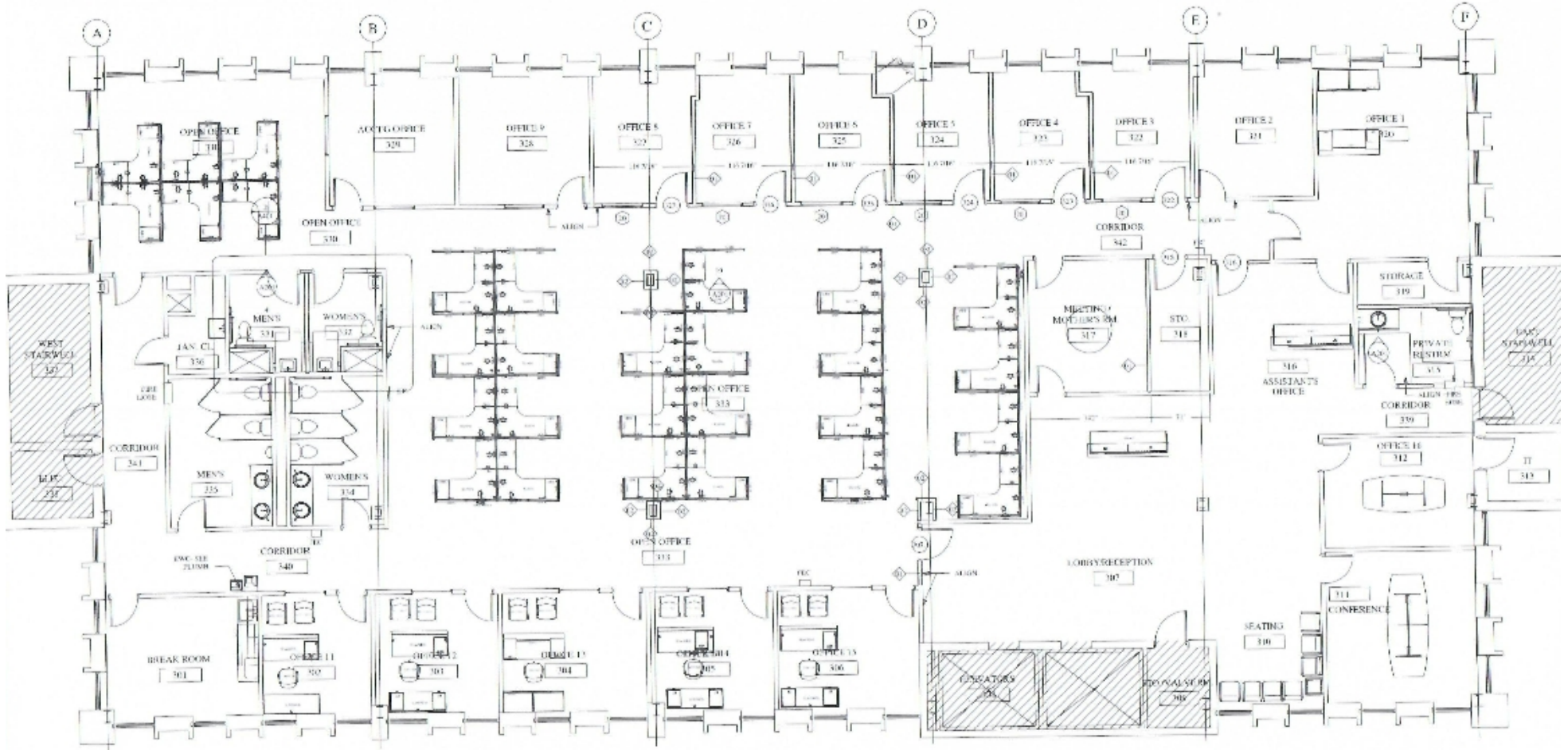


Suite      RSF      Description

300      ±9,554

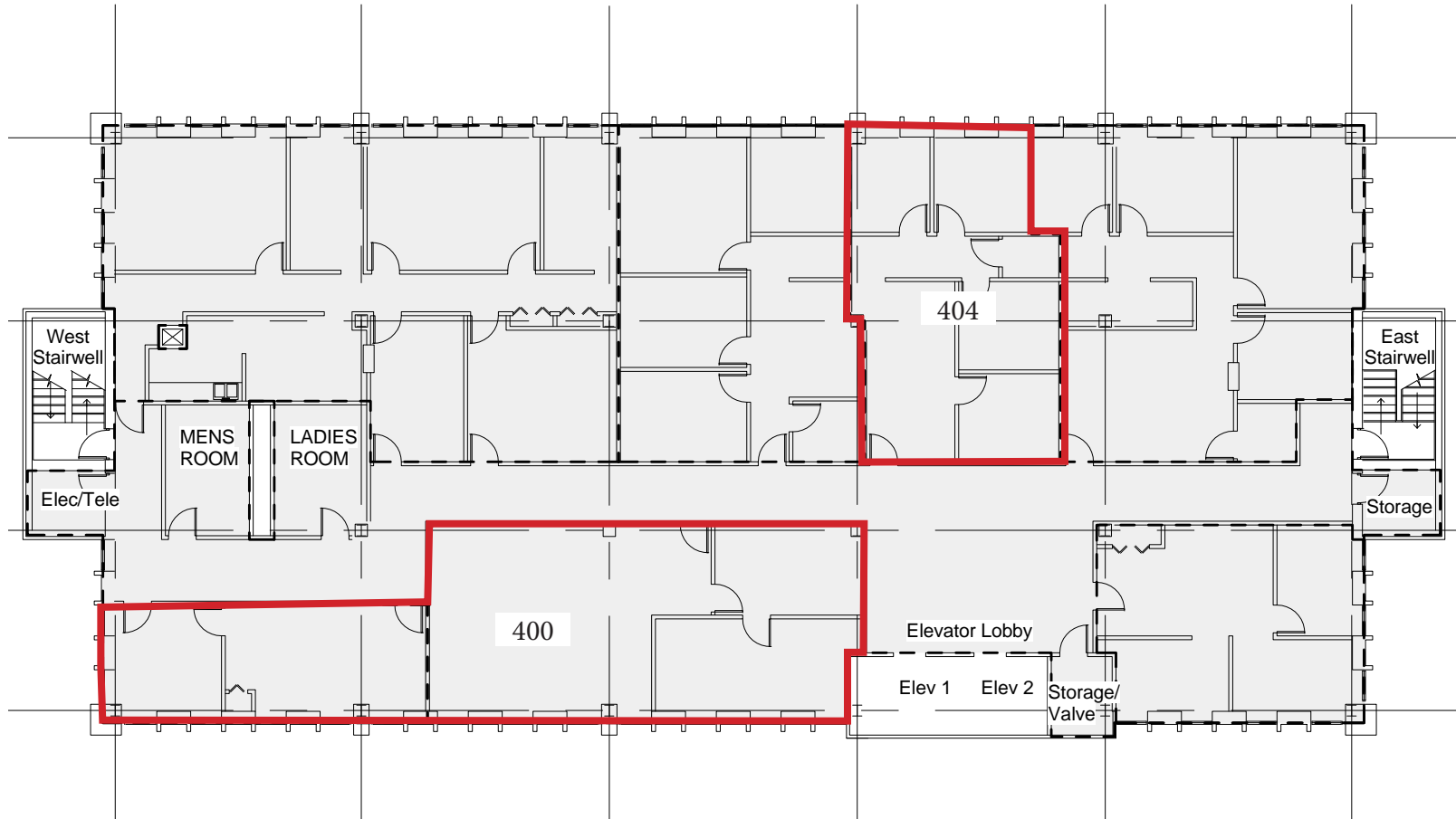
Suite 300 is a 9,554 single tenant floor featuring a functionally modern layout and finish. This suite features 15 exterior private offices that filter natural light into an interior bullpen area with the capacity to accommodate 25-30 work stations. Available now!

Third Floor



<u>Suite</u>	<u>RSF</u>	<u>Description</u>
400	±1,658	Move-in ready!
404	±884	Move-in ready!

# Fourth Floor

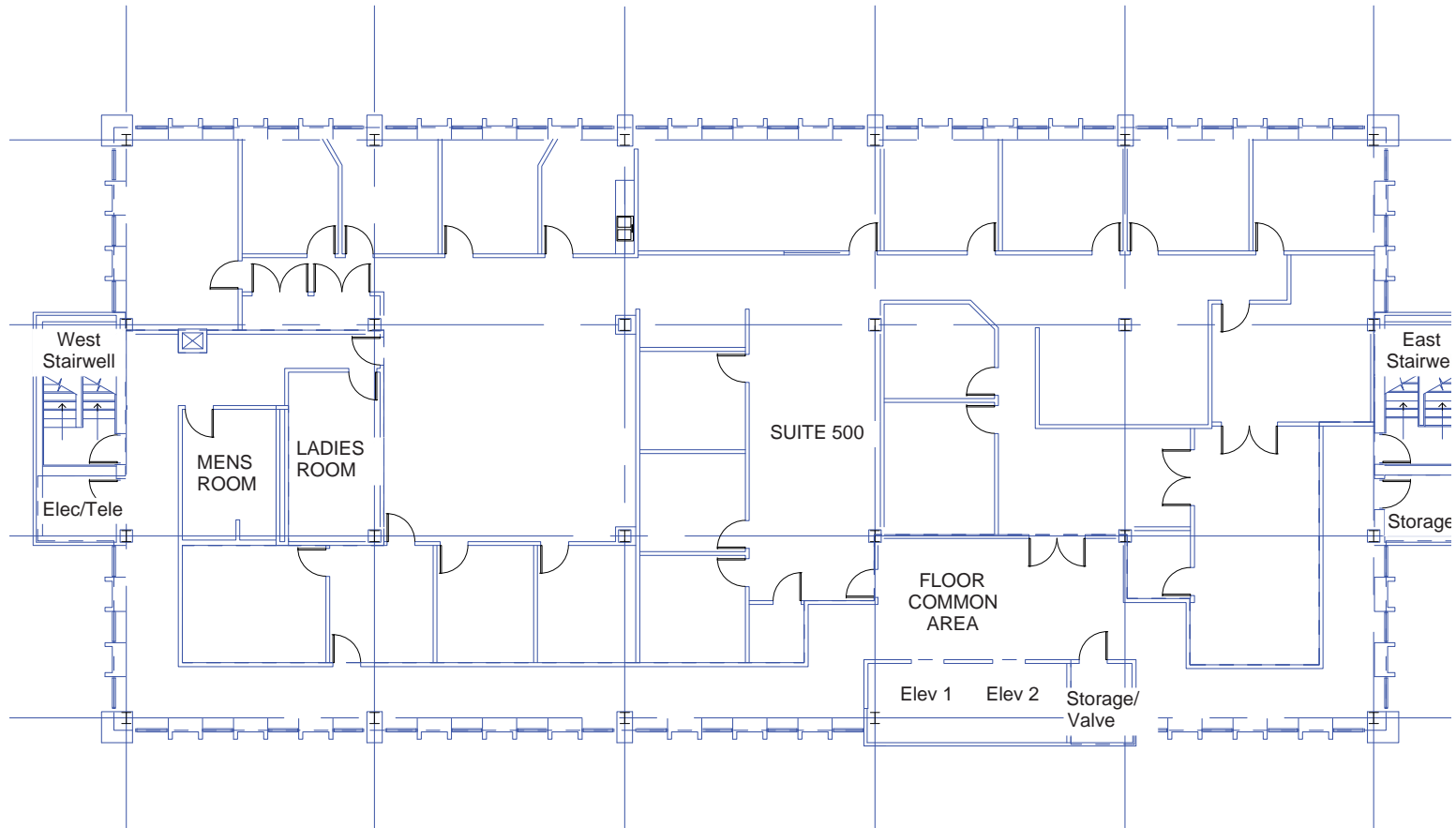




Suite      RSF      Description

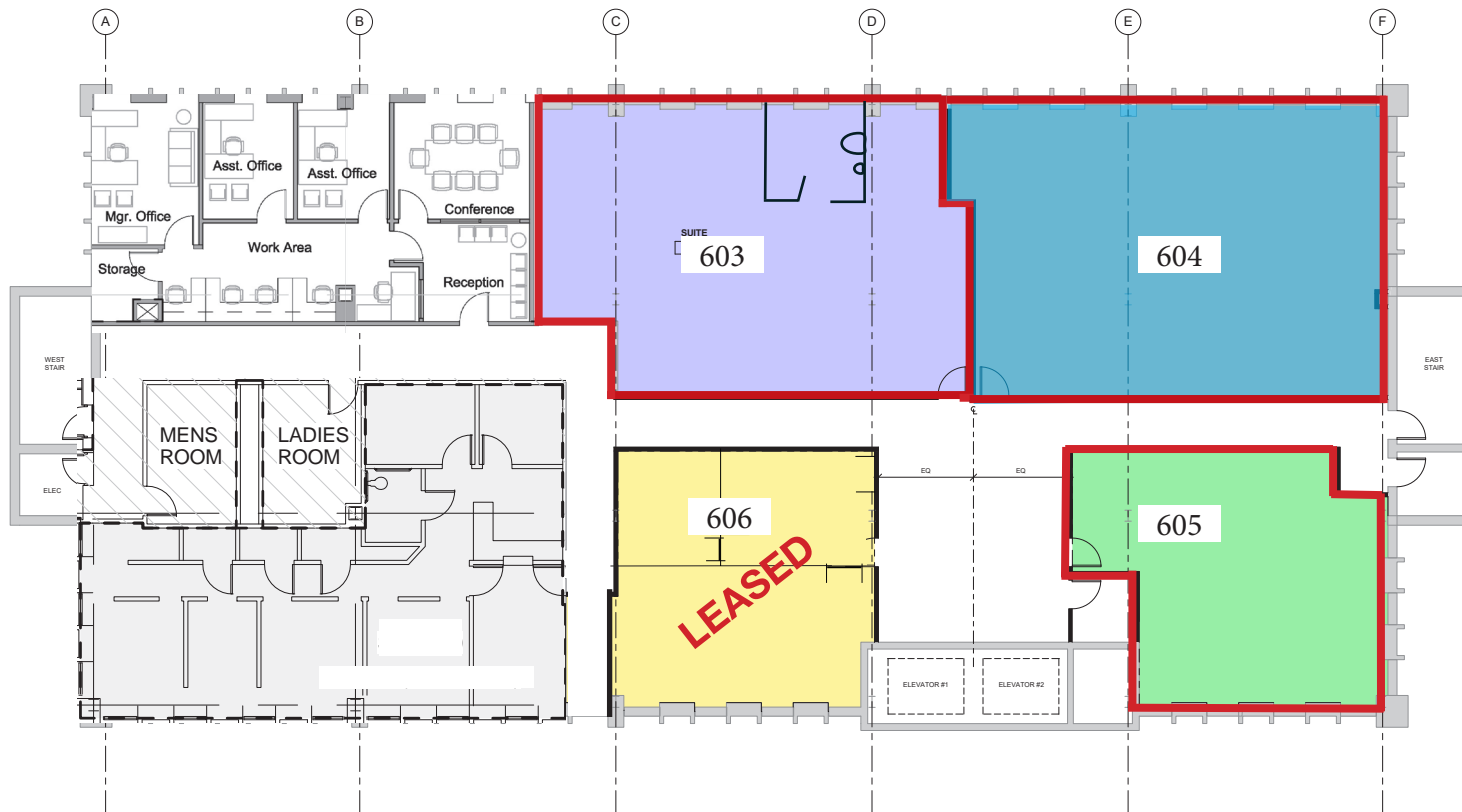
500      ±9,581      Full floor with a balanced mix of private offices, collaborative/open work areas and conference rooms

Fifth Floor



# Sixth Floor

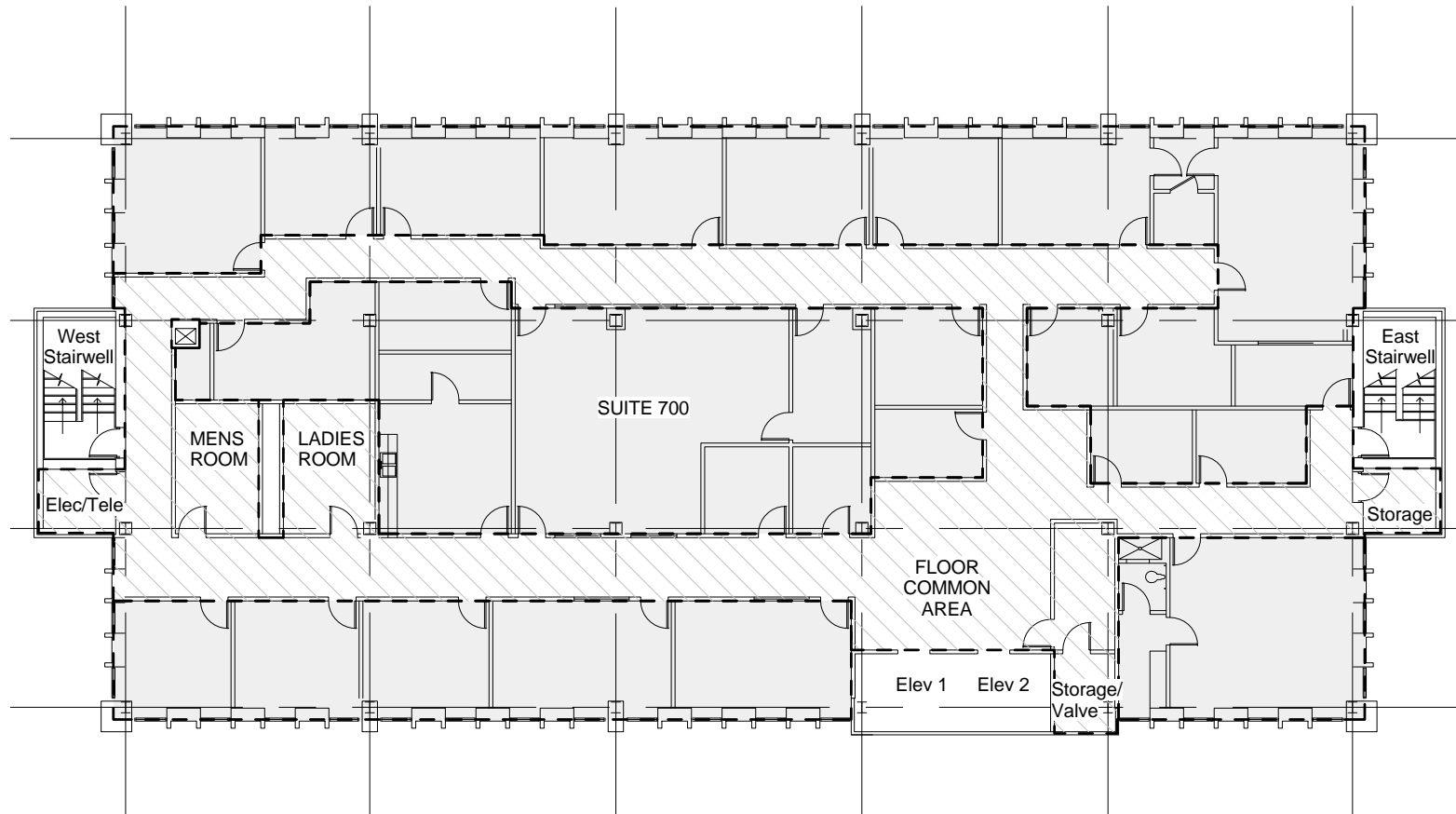
<u>Suite</u>	<u>RSF</u>	<u>Description</u>
603	±1,134	Move-in ready! Open floor plan
604	±1,484	Available 6/1/25 - Furnished
605	±881	Shell condition



Suite      RSF      Description

700      ±9,559      Full floor

# Seventh Floor



# Aerial View

