

LUMBERTON, NJ

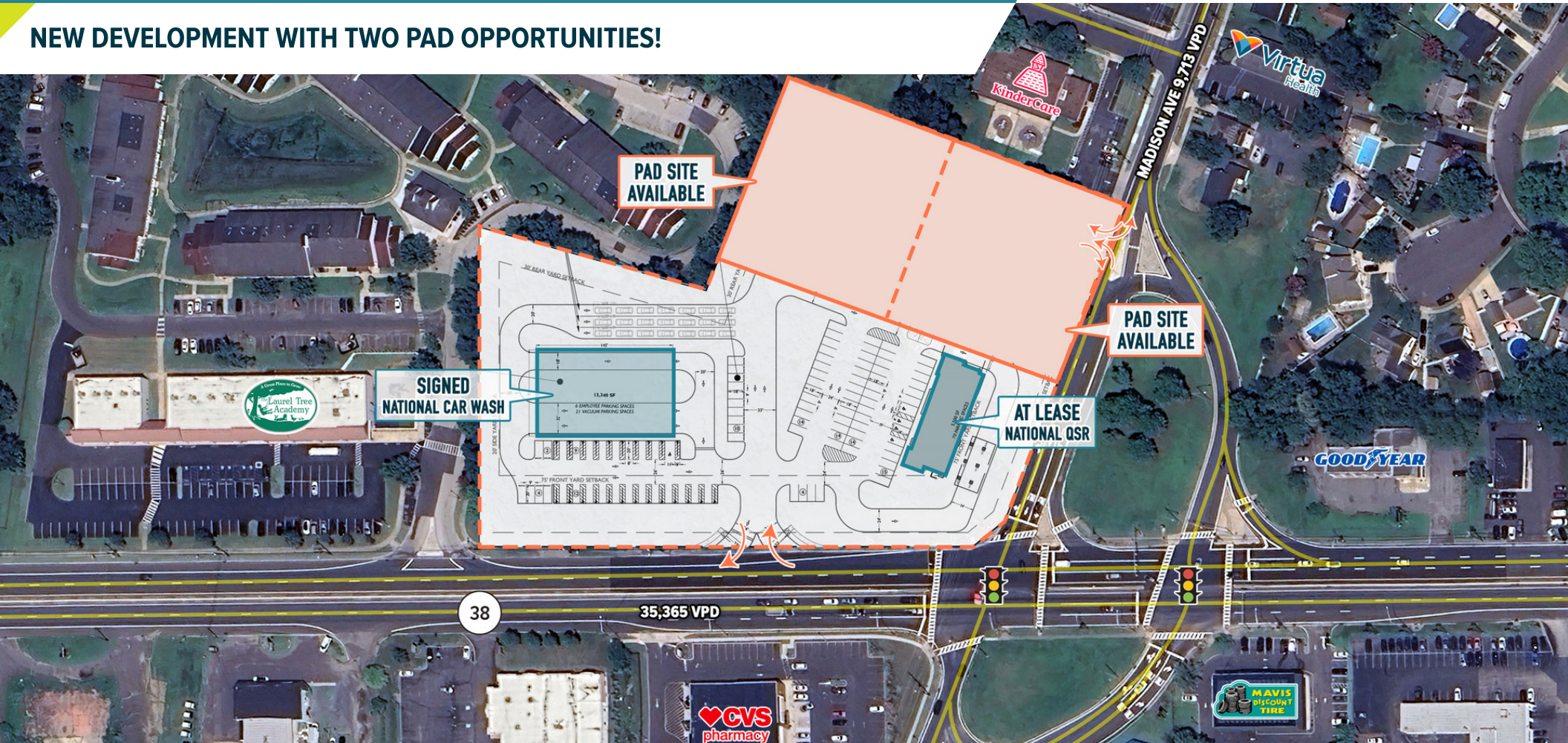
1573 NJ-38

PAD SITES AVAILABLE FOR LEASE

AREA RETAILERS



NEW DEVELOPMENT WITH TWO PAD OPPORTUNITIES!



get in touch.

MAX SILVER

Office 610.260.2672
Direct 610.888.3436
msilver@metrocommercial.com

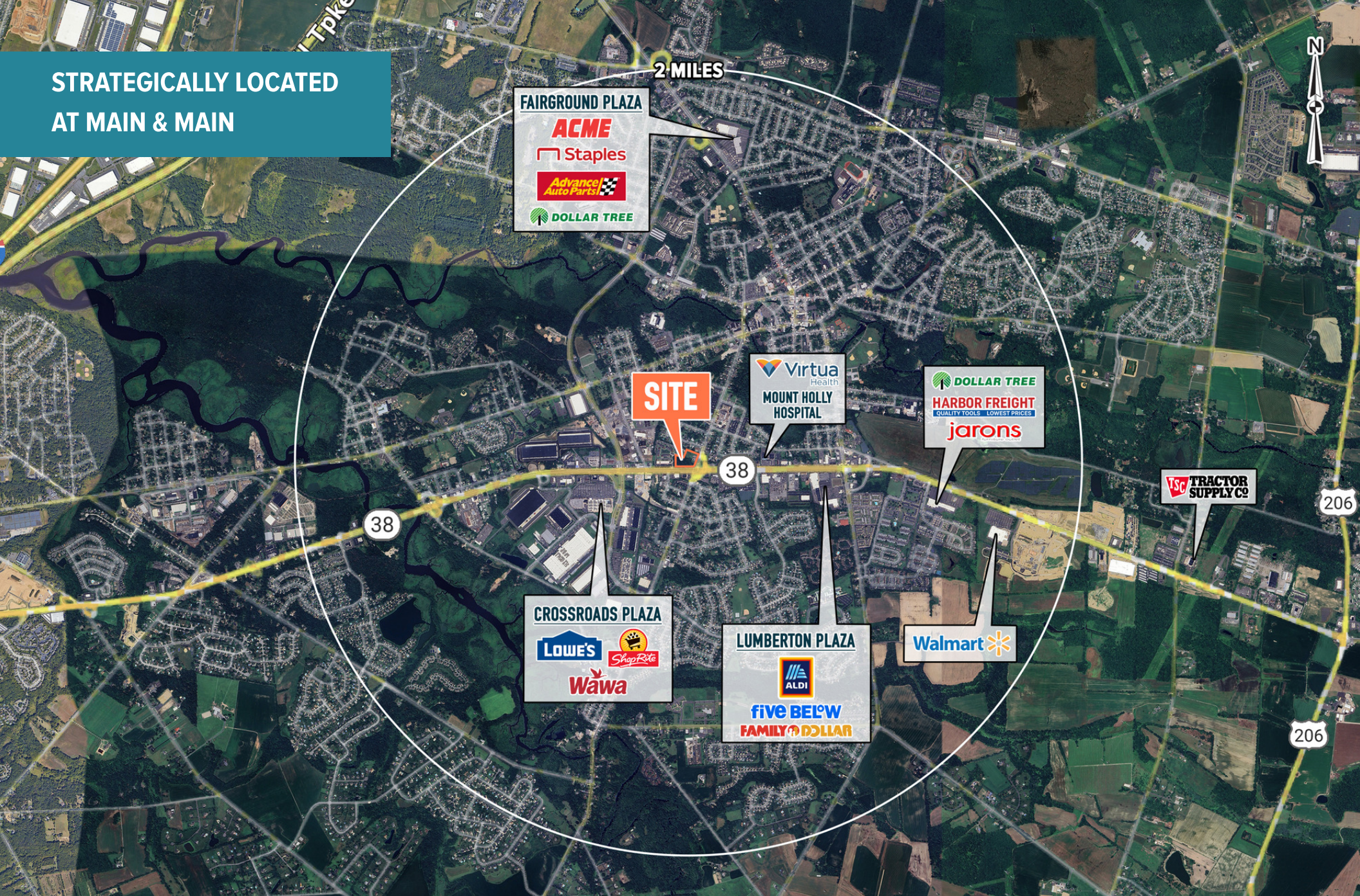
JONATHAN SPOERL

Office 215.282.0157
Direct 610.724.0495
jspoerl@metrocommercial.com



metrocommercial.com | Plymouth Meeting, PA | Mount Laurel, NJ | Miami, FL | Philadelphia, PA

STRATEGICALLY LOCATED
AT MAIN & MAIN



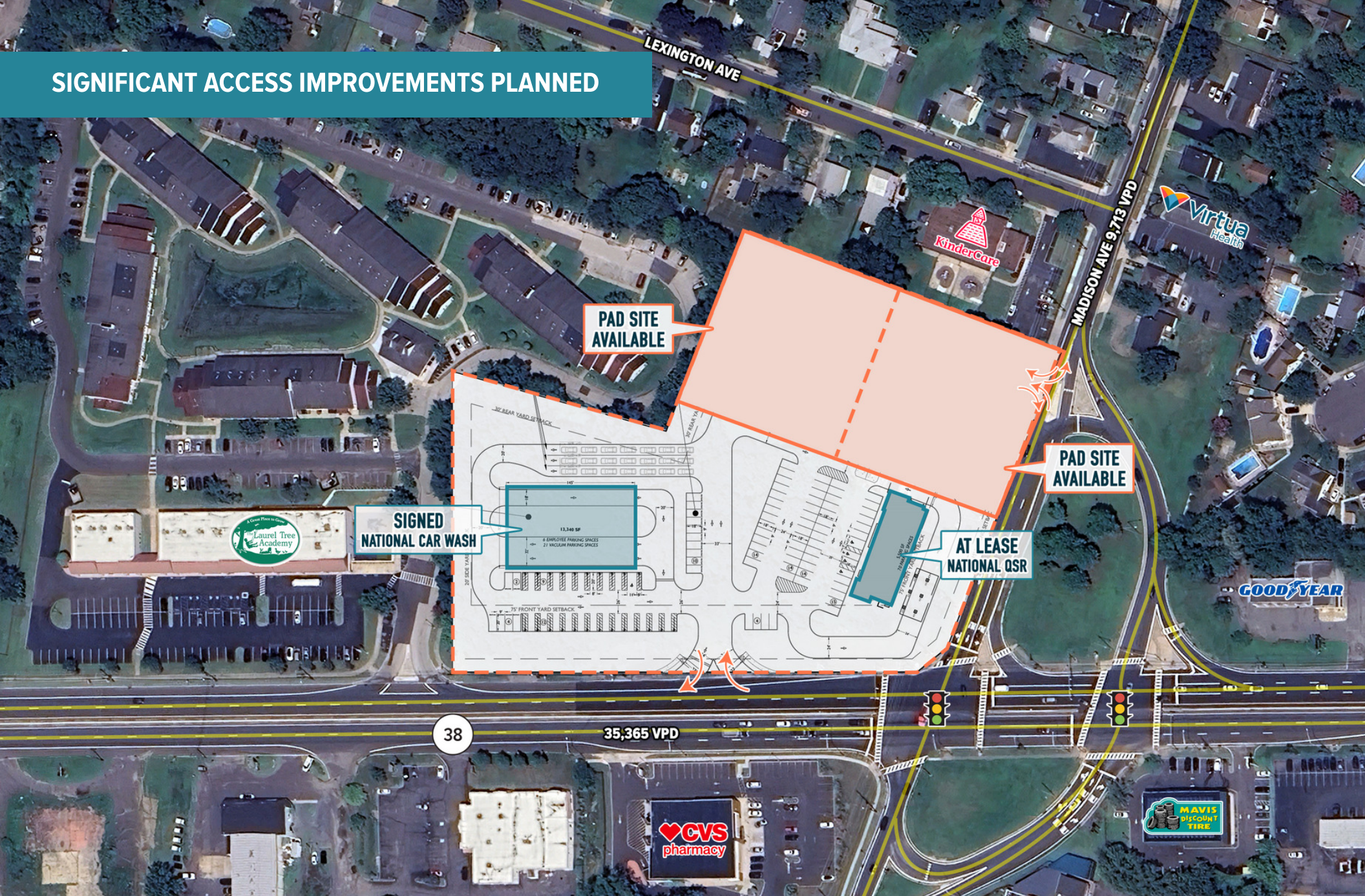
The information and images contained herein are from sources deemed reliable. However, Metro Commercial Real Estate, Inc. makes no representation whatsoever as to their accuracy or authenticity. Images shown may be modified for illustrative purposes. Images may be out-of-date and not current.

LUMBERTON, NJ
1573 NJ-38



www.metrocommercial.com

SIGNIFICANT ACCESS IMPROVEMENTS PLANNED

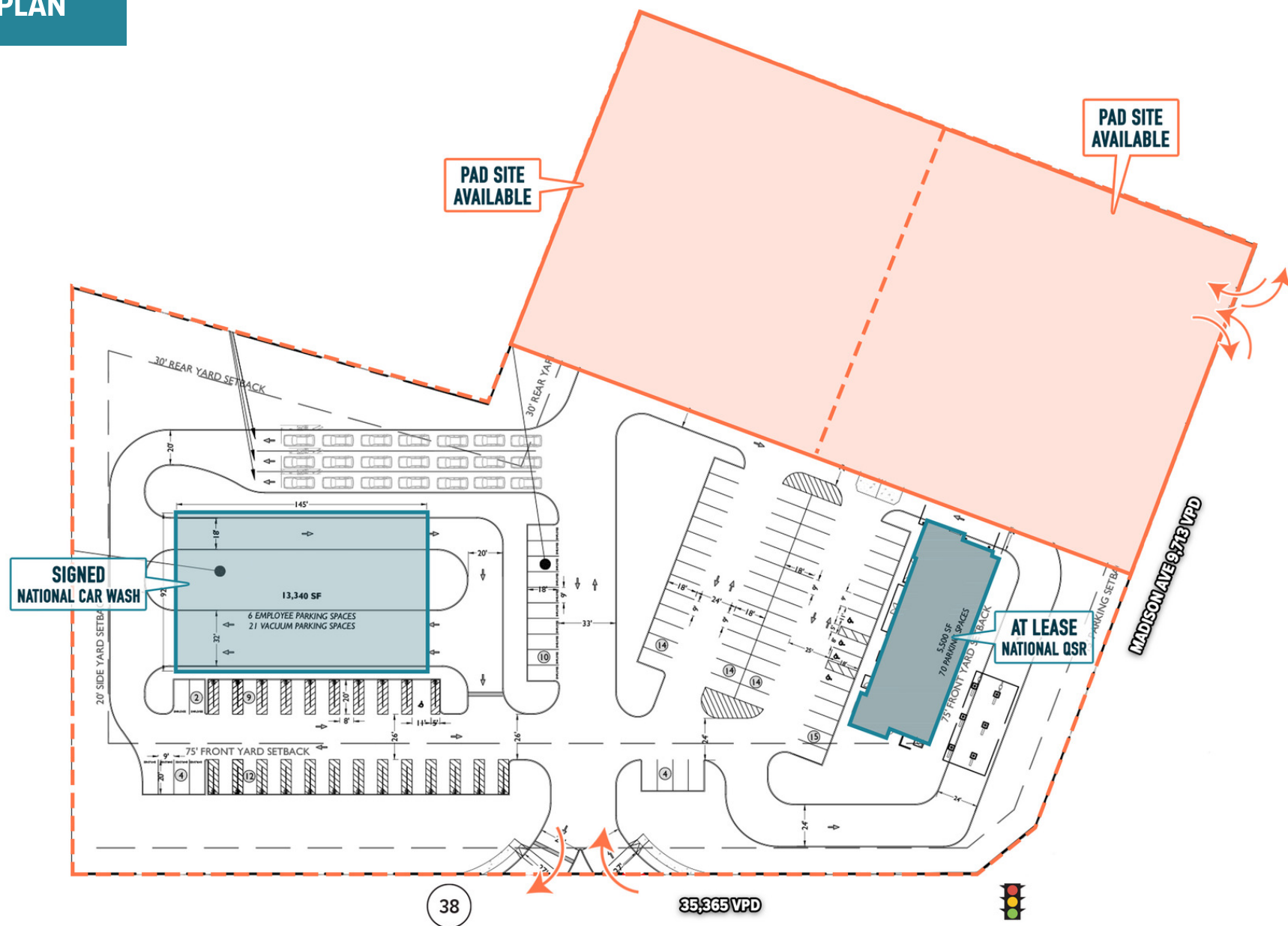


The information and images contained herein are from sources deemed reliable. However, Metro Commercial Real Estate, Inc. makes no representation whatsoever as to their accuracy or authenticity. Images shown may be modified for illustrative purposes. Images may be out-of-date and not current.

LUMBERTON, NJ
1573 NJ-38



www.metrocommercial.com

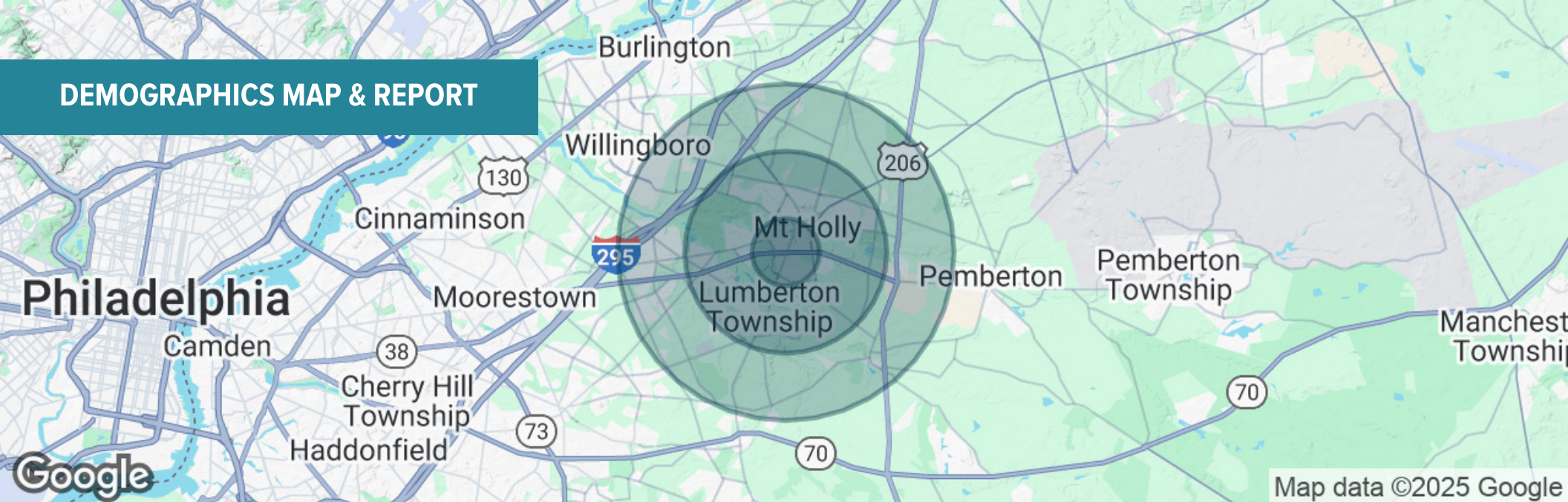


The information and images contained herein are from sources deemed reliable. However, Metro Commercial Real Estate, Inc. makes no representation whatsoever as to their accuracy or authenticity. Images shown may be modified for illustrative purposes. Images may be out-of-date and not current.



www.metrocommercial.com

DEMOGRAPHICS MAP & REPORT



POPULATION	1 MILE	3 MILES	5 MILES
Total Population	8,267	39,546	87,920
Average Age	41	41	42
Average Age (Male)	39	40	41
Average Age (Female)	42	42	43
HOUSEHOLDS & INCOME	1 MILE	3 MILES	5 MILES
Total Households	3,080	14,867	34,213
# of Persons per HH	2.7	2.7	2.6
Average HH Income	\$117,987	\$134,798	\$137,584
Average House Value	\$354,928	\$397,544	\$389,606

Demographics data derived from AlphaMap

The information and images contained herein are from sources deemed reliable. However, Metro Commercial Real Estate, Inc. makes no representation whatsoever as to their accuracy or authenticity. Images shown may be modified for illustrative purposes. Images may be out-of-date and not current.

LUMBERTON, NJ
1573 NJ-38



www.metrocommercial.com