

PROPERTY DETAILS

- Prime Office/Flex Space
- Suite 101: 3,033 SF
- Suite 206: 2,045 SF
- Suite 307: 3,384 SF
- Est. 2025 Opex: \$6.70 PSF
- Brand new office park finishes
- Parking Ratio: 2.98/1,000 SF
- Easy access to I-95 & Fla. Turnpike - centrally located with quick access to restaurants, hotels banking and Fort Lauderdale Executive

ABOUT PROPERTY



PRICE

\$19.00 (NNN)



YEAR BUILT

1986



AVAILABLE SF

3,033 - 6,417



PARKING RATIO

2.98/1,000 SF



LOCATION

Fort Lauderdale, FL

For more information:

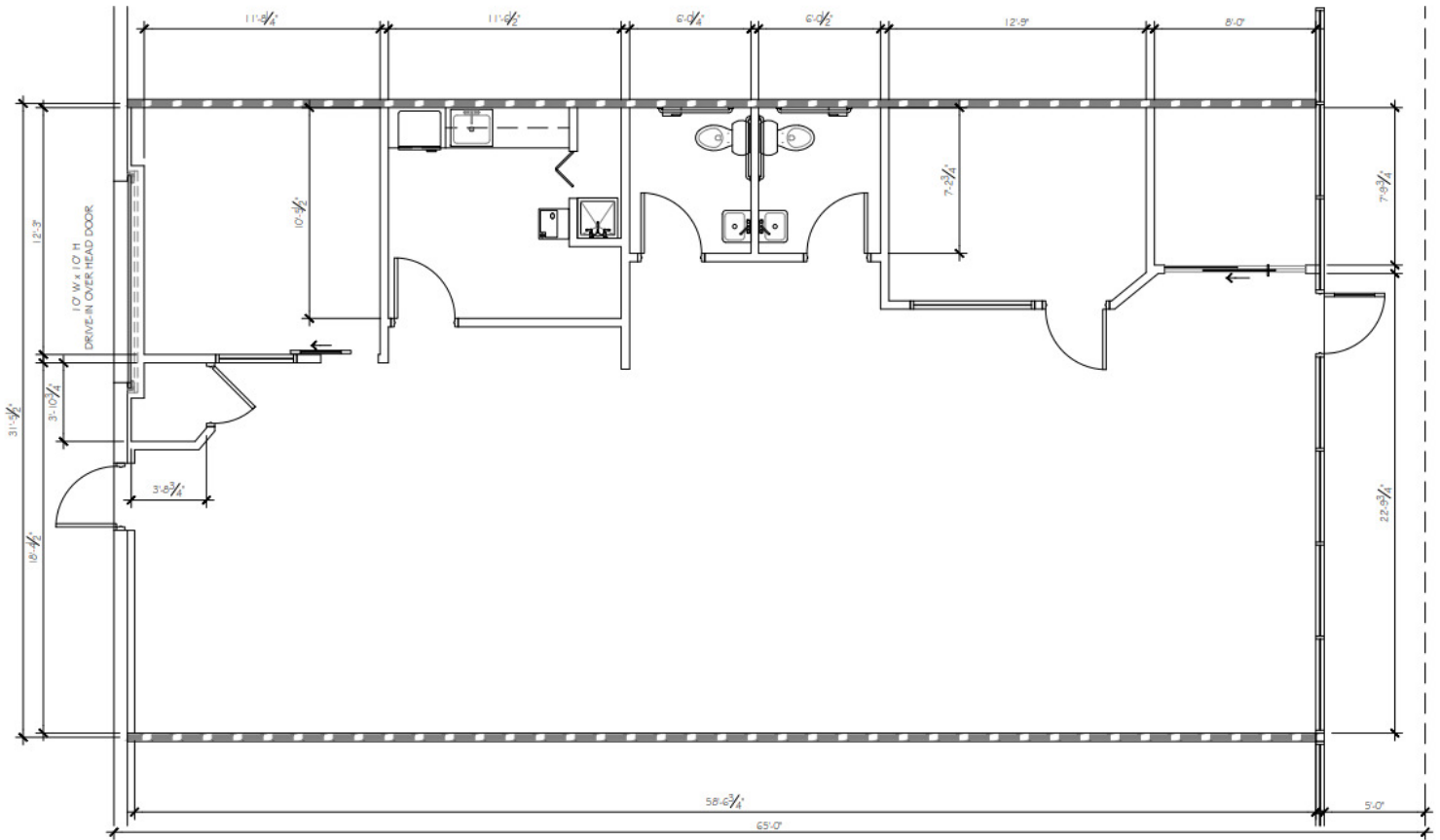
Keith R. Graves, CCIM, SIOR
 954.652.2031 | Kgraves@Bergercommercial.Com
 bergercommercial.com

Daniel Forman
 954.652.2004 | Dforman@Bergercommercial.Com

Jonathan Thiel
 954.652.2020 | Jthiel@Bergercommercial.Com



Information furnished regarding this property is from sources deemed reliable, but no warranty or representation as to the accuracy thereof and it is submitted subject to errors, omissions, prior sale, lease or withdrawal without prior notice.



For more information:

Keith R. Graves, CCIM, SIOR

Daniel Forman

Jonathan Thiel

954.652.2031 | Kgraves@Bergercommercial.Com

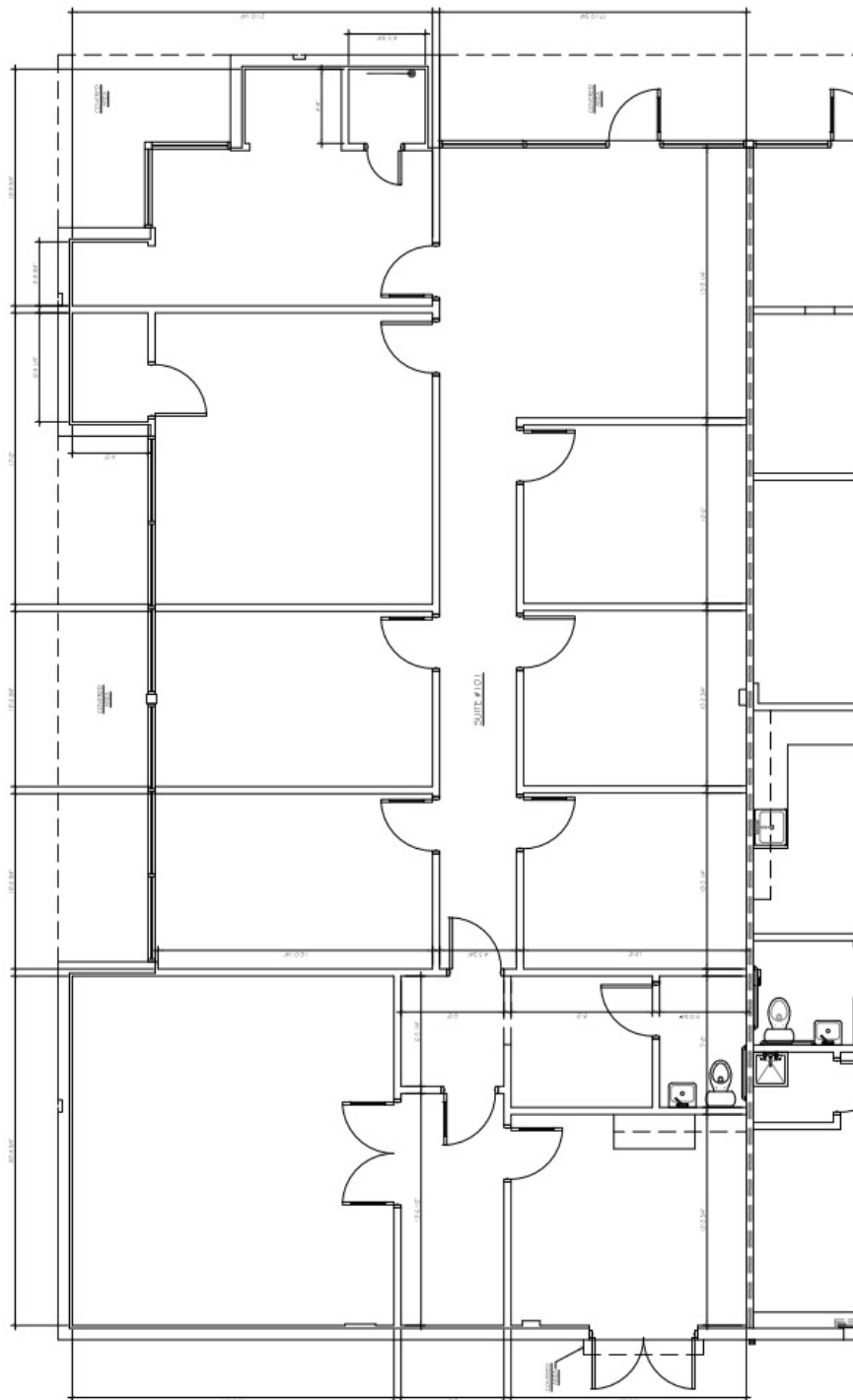
954.652.2004 | Dforman@Bergercommercial.Com

954.652.2020 | Jthiel@Bergercommercial.Com

bergercommercial.com

Lawrence County, Florida
BERGER
COMMERCIAL REALTY
954.652.2017 | Loxenberg@Bergercommercial.Com
COMMERCIAL BROKERAGE AND PROPERTY MANAGEMENT

CRFAC
International
COMMERCIAL REALTY



For more information:

Keith R. Graves, CCIM, SIOR

954.652.2031 | Kgraves@Bergercommercial.Com

bergercommercial.com

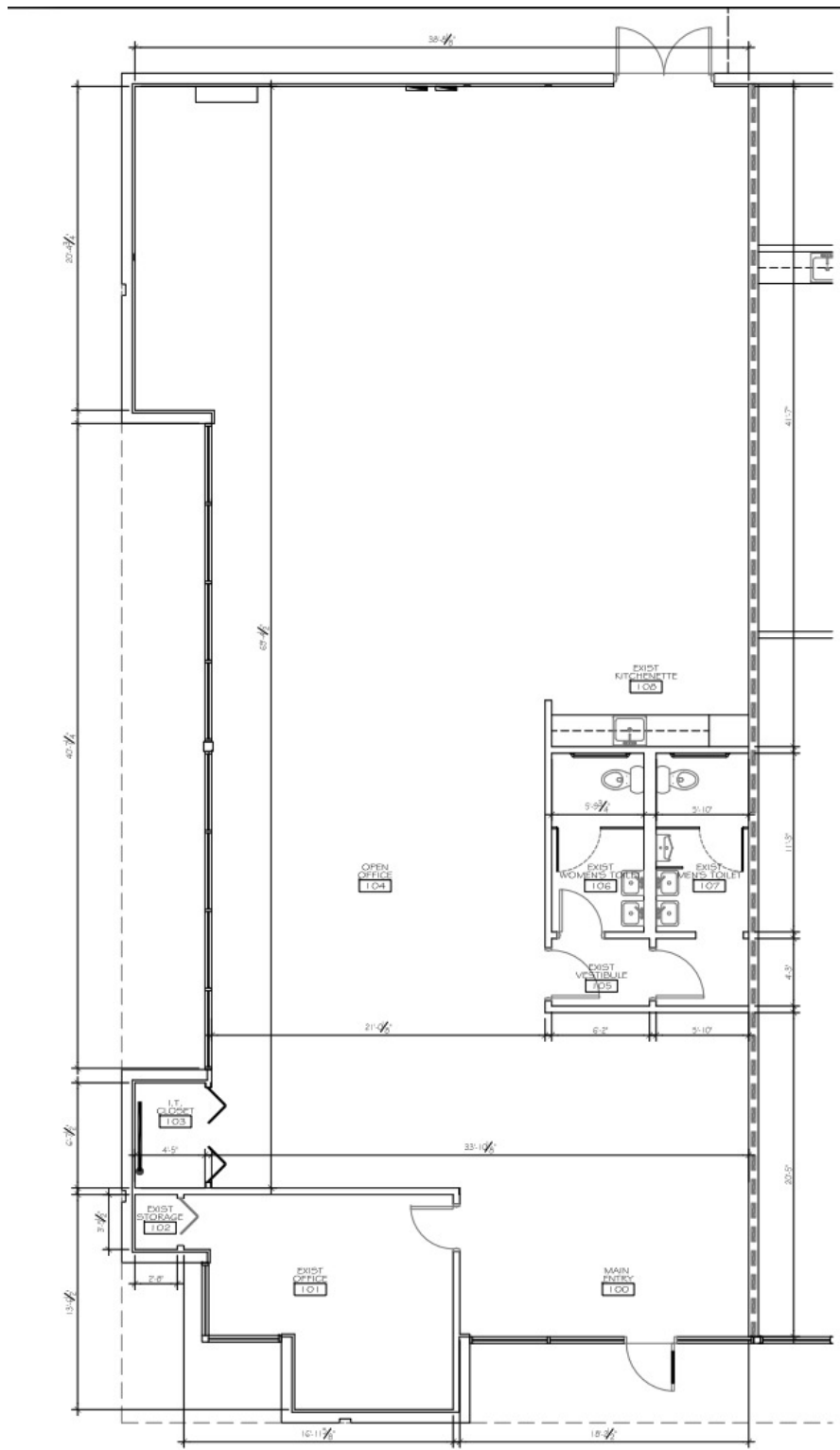
Daniel Forman

954.652.2004 | Dforman@Bergercommercial.Com

Jonathan Thiel

954.652.2020 | Jthiel@Bergercommercial.Com

Lawrence C. **BERGER** COMMERCIAL REALTY
954.652.2017 | Loxenberg@Bergercommercial.Com
COMMERCIAL BROKERAGE AND PROPERTY MANAGEMENT



For more information:

Keith R. Graves, CCIM, SIOR

954.652.2031 | Kgraves@Bergercommercial.com

bergercommercial.com

Daniel Forman

954.652.2004 | Dforman@Bergercommercial.com

Jonathan Thiel

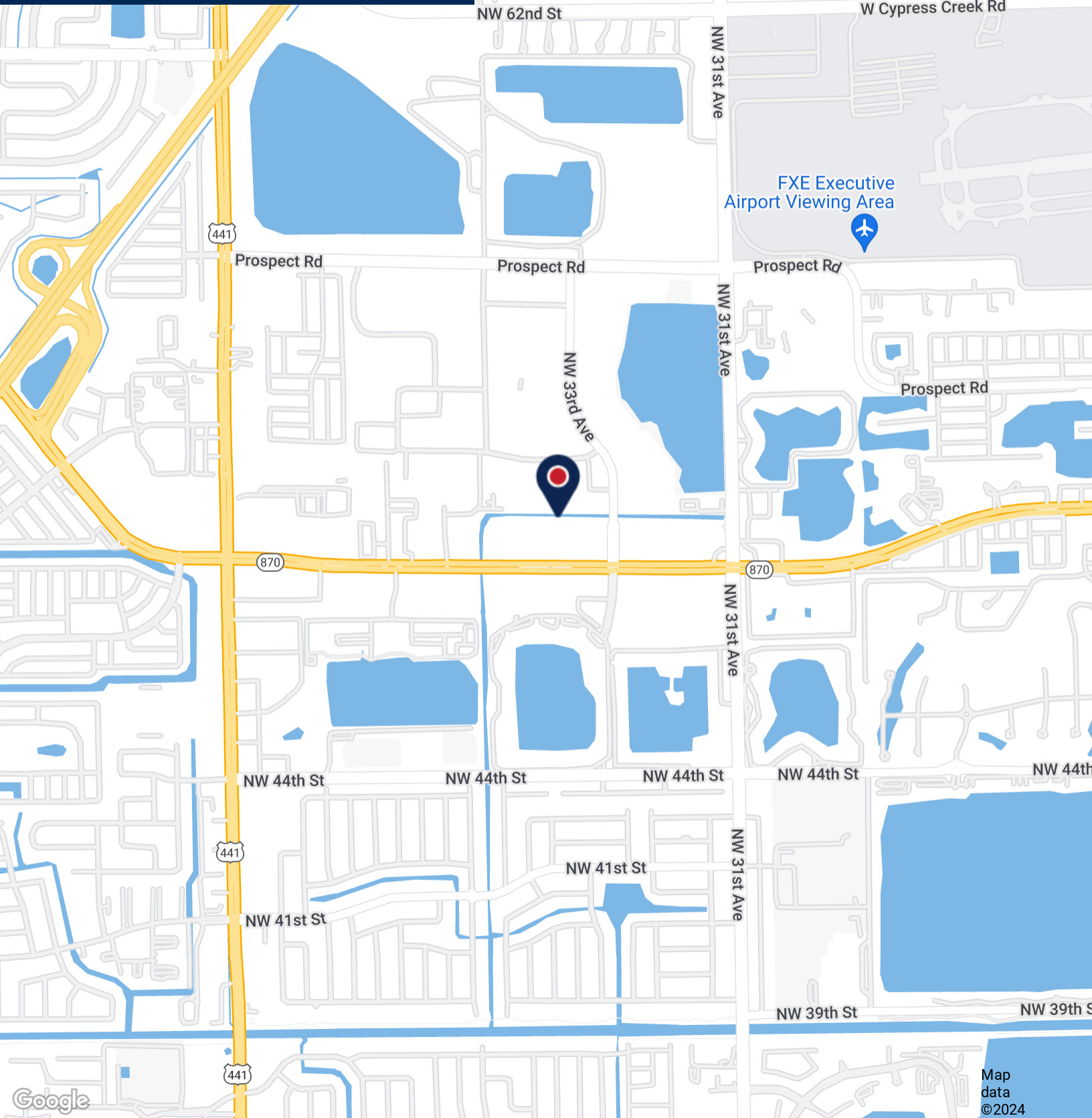
954.652.2020 | Jthiel@Bergercommercial.com

Lawrence C. Berger
BERGER
 COMMERCIAL REALTY
 954.652.2017 | Loxenberg@Bergercommercial.com
 COMMERCIAL BROKERAGE AND PROPERTY MANAGEMENT

CRFAC
 International
 COMMERCIAL REALTY

PALM CROSSING SOUTH

LOCATION MAP



Map data ©2024

For more information:

Keith R. Graves, CCIM, SIOR

Daniel Forman

Jonathan Thiel

954.652.2031 | kgraves@Bergercommercial.com

954.652.2004 | dforman@Bergercommercial.com

954.652.2020 | jthiel@Bergercommercial.com

bergercommercial.com

Lawrence C. BERGER
COMMERCIAL REALTY
954.652.2017 | loxenberger@Bergercommercial.com
COMMERCIAL BROKERAGE AND PROPERTY MANAGEMENT

CRFAC International