



58,735 SQUARE FEET AVAILABLE NOW

PREMIER WAREHOUSE DISTRIBUTION FACILITY AVAILABLE
6052 Bandini Blvd | Commerce, CA 90040





Property Highlights

- 58,735 square feet
- 3,640 square feet of office
- 32' minimum warehouse clearance
- (11) dock high positions, (1) grade level door
- 3,000 amps, 277/480 Volts
- ESFR sprinkler system (K25 sprinkler heads)
- 100% concrete truck court

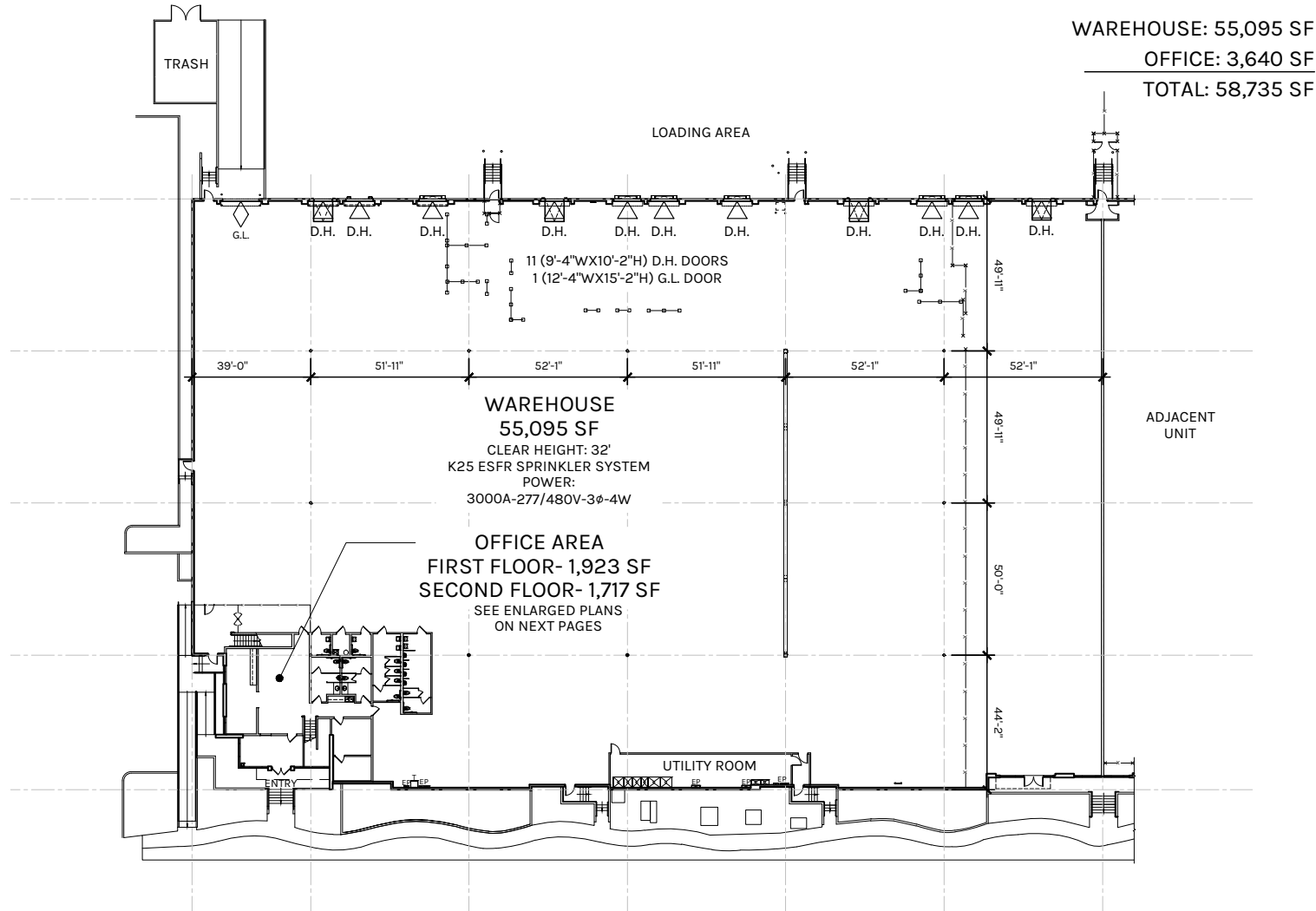


WAREHOUSE
55,095 SF

OFFICE
3,640 SF

TOTAL
58,735 SF

PLAN LAYOUT SUBJECT TO FIELD CONDITIONS AND MAY DIFFER FROM PLAN AS SHOWN. ALL INFORMATION PRESENTED ON THIS DRAWING IS PRESUMED TO BE ACCURATE, HOWEVER TENANT SHOULD VERIFY PERTINENT INFORMATION PRIOR TO COMMITTING TO A LEASE. ANY FURNITURE OR APPLIANCES SHOWN ON PLAN ARE FOR CONCEPT ONLY AND WILL BE TENANT PROVIDED.



WAREHOUSE: 55,095 SF
OFFICE: 3,640 SF
TOTAL: 58,735 SF

WAREHOUSE
55,095 SF

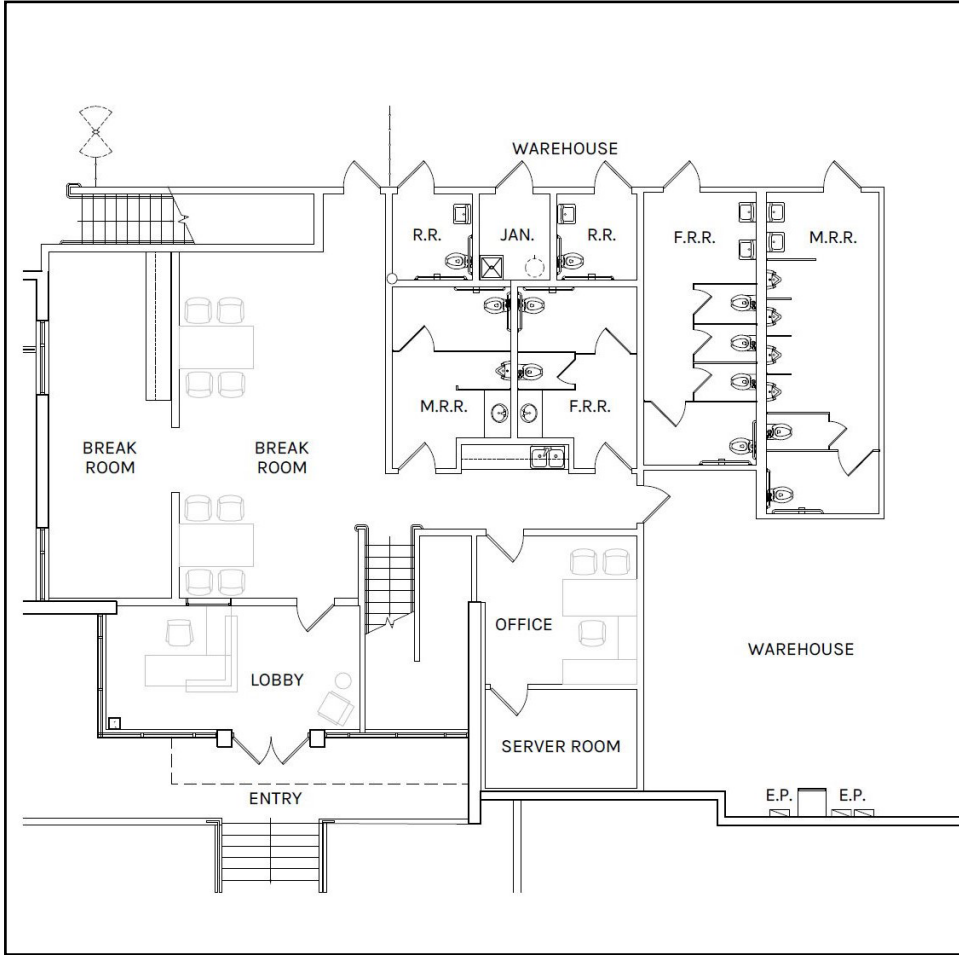
OFFICE
3,640 SF

TOTAL
58,735 SF

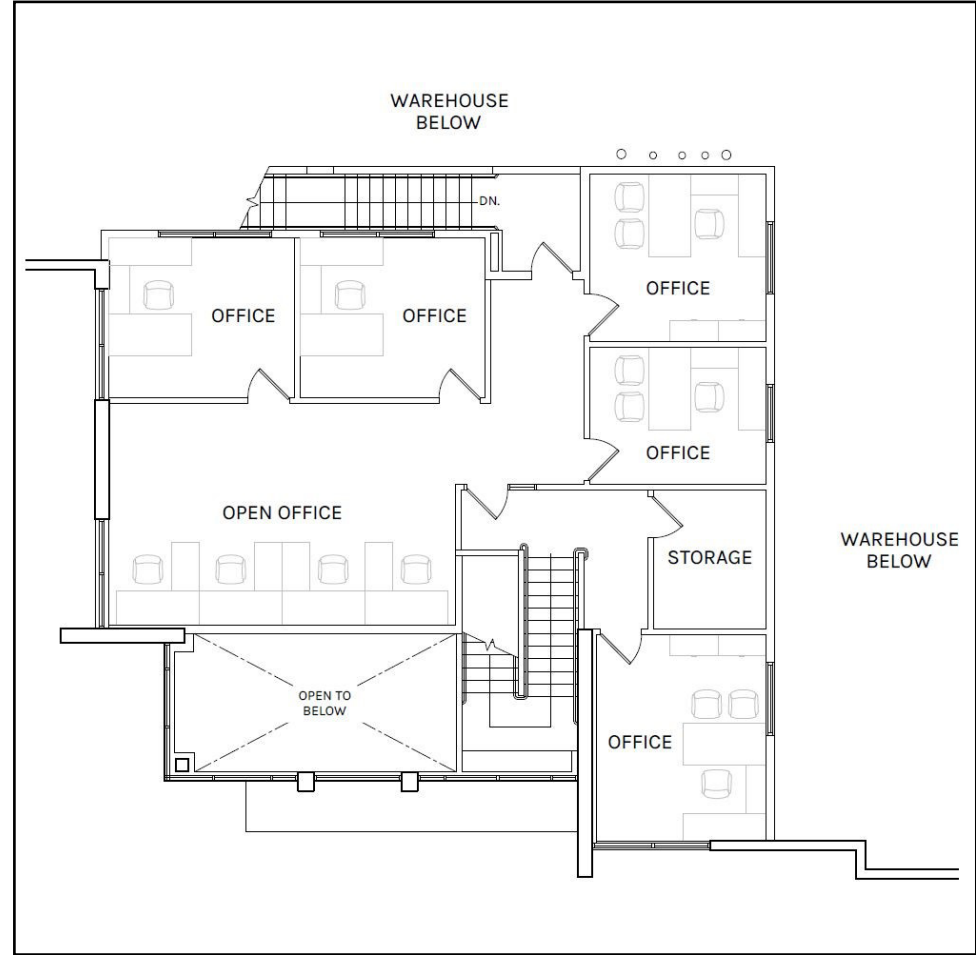
PLAN LAYOUT SUBJECT TO FIELD CONDITIONS AND MAY DIFFER FROM PLAN AS SHOWN. ALL INFORMATION PRESENTED ON THIS DRAWING IS PRESUMED TO BE ACCURATE, HOWEVER TENANT SHOULD VERIFY PERTINENT INFORMATION PRIOR TO COMMITTING TO A LEASE. ANY FURNITURE OR APPLIANCES SHOWN ON PLAN ARE FOR CONCEPT ONLY AND WILL BE TENANT PROVIDED.



1st Floor



2nd Floor

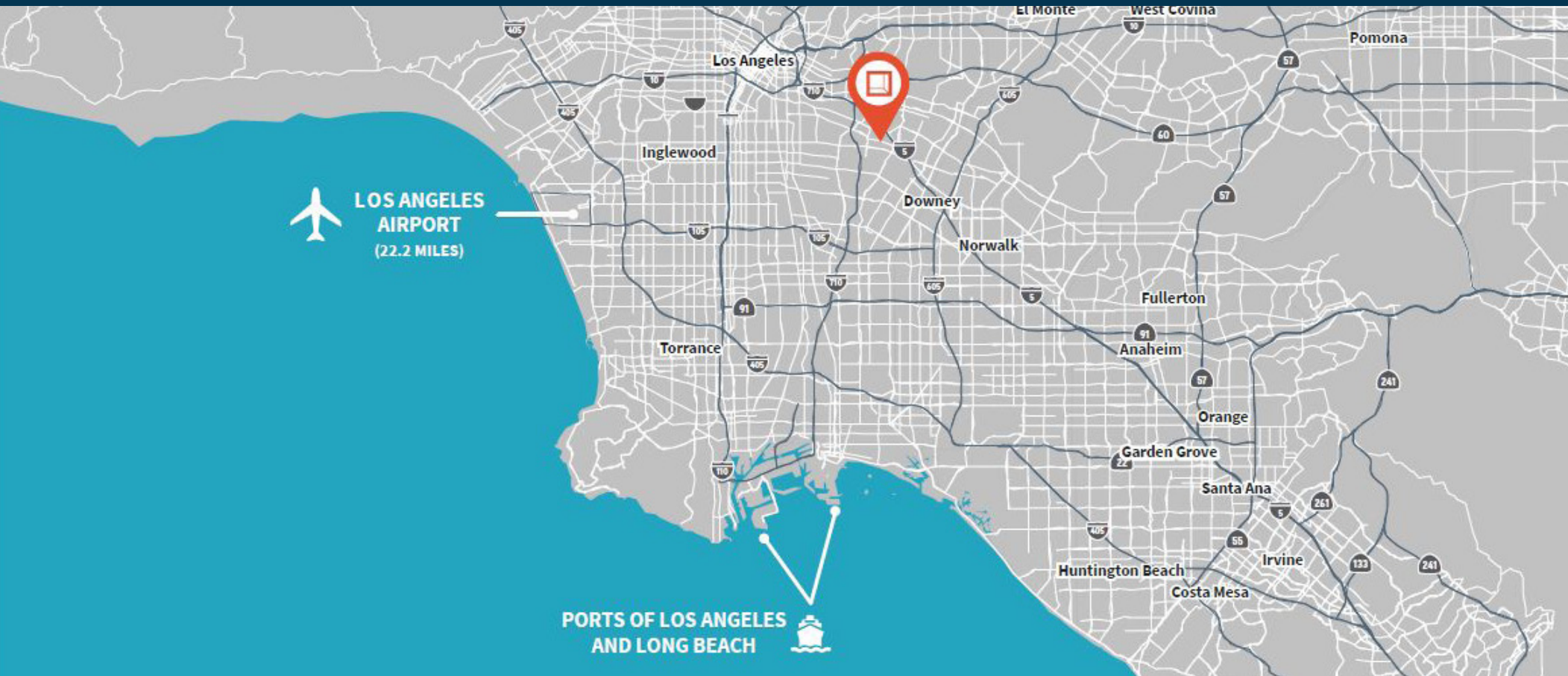


WAREHOUSE
55,095 SF

OFFICE
3,640 SF

TOTAL
58,735 SF

PLAN LAYOUT SUBJECT TO FIELD CONDITIONS AND MAY DIFFER FROM PLAN AS SHOWN. ALL INFORMATION PRESENTED ON THIS DRAWING IS PRESUMED TO BE ACCURATE, HOWEVER TENANT SHOULD VERIFY PERTINENT INFORMATION PRIOR TO COMMITTING TO A LEASE. ANY FURNITURE OR APPLIANCES SHOWN ON PLAN ARE FOR CONCEPT ONLY AND WILL BE TENANT PROVIDED.



Location Highlights

- Same day serviceability to all of Los Angeles County
- Immediate access to 5, 710 and 105 Freeways
- Proximity to multiple parcel delivery hubs
- Minutes to BNSF and Union Pacific intermodal rail yards
- Amenities and eateries at nearby Citadel Outlets

2.3 Miles
to I-5

23.1 Miles
to LAX

20.2 Miles
to Long Beach
Airport

1.9 Miles
to I-710

23.0 Miles
to Port of LB and LA

18.5 Miles
to Alameda Corridor

13.7 Miles
to I-105

10.1 Miles
to DTLA

16.7 Miles
to ICTF



**Rexford
Industrial**

LEASING CONTACTS

ZAC SAKOWSKI

Executive Managing Director

424-294-3429

zac.sakowski@jll.com

LIC # 01856260

BRIANNA DEMUS

Senior Vice President

424-294-3436

brianna.demus@jll.com

LIC #02049585



Jones Lang LaSalle

2141 Rosecrans Ave., Suite 6100

El Segundo, CA 90245

424.294.3400

<https://www.us.jll.com/>

Jones Lang LaSalle Brokerage, Inc. License

#01856260. Copyright © Jones Lang LaSalle IP, Inc. 2023 All rights reserved. All information contained herein is from sources deemed reliable; however, no representation or warranty is made to the accuracy thereof.