

The Colliers logo is located in the top right corner. It consists of the word "Colliers" in a white serif font, set against a dark blue rectangular background with a thin yellow and red horizontal stripe at the bottom.The main image is a wide-angle photograph of the Kyrene Corporate Center. The building is a two-story structure with a light-colored stucco finish and a flat roof. It features a series of large windows along the ground floor. The address "9280" is visible on the corner of the building. A sign on the side of the building reads "Your Sign Here". The building is surrounded by a well-maintained lawn, shrubs, and a large tree on the right. A paved sidewalk runs along the right side of the property. The sky is clear and blue.

9280 Your Sign Here

Available Office Suite

Kyrene Corporate Center

9280 S Kyrene Rd | Tempe, AZ 85284

For Lease | ±2,929 SF - ±6,312 SF

Michael Marsh, JD, MBA, CCIM

Vice President

+1 602 222 5177

michael.marsh@colliers.com

Kyrene Corporate Center

9280 S Kyrene Rd | Tempe, AZ 85284

Project Highlights

- Modern architectural design and detail
- Excellent frontage on Kyrene Rd with easy ingress/egress
- Located 3/4 miles east of I-10
- Minutes from Phoenix Sky Harbor International Airport
- Numerous amenities within a five-minute drive
- Major employers include Intel, Motorola and Honeywell

Property Summary

Project	±86,160 SF / 11.5 Acres
---------	-------------------------

Year Built	1998
------------	------

Parking	5.00/1,000 SF
---------	---------------

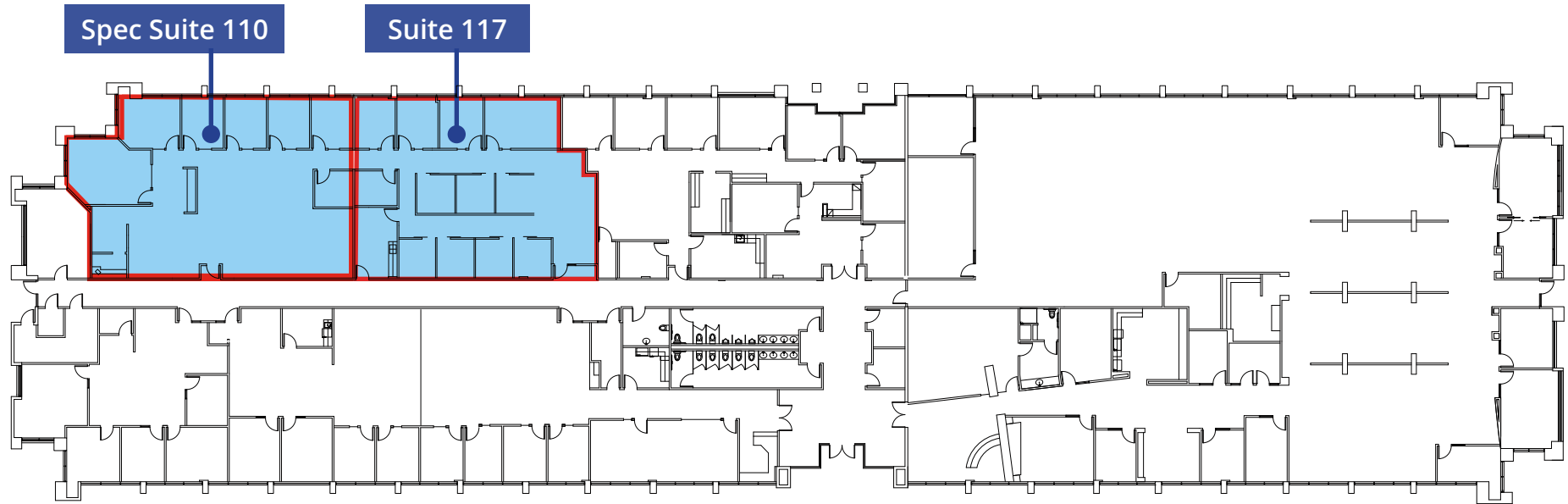
Zoning	GID, Tempe
--------	------------

Lease Rate	\$24.50 PSF FSG
------------	-----------------



Kyrene Corporate Center

9280 S Kyrene Rd | Tempe, AZ 85284



Availability

Spec Suite	110	±3,383 SF
Suite	117	±2,929 SF
Lease Rate	\$24.50 PSF FSG	

Kyrene Corporate Center

9280 S Kyrene Rd | Tempe, AZ 85284

Michael Marsh, JD, MBA, CCIM

Vice President

+1 602 222 5177

michael.marsh@colliers.com

Colliers

2390 East Camelback Road
Suite 100
Phoenix, AZ 85016

Colliers

