

# MEDICAL OFFICE SPACE FOR LEASE



**8071 TOWNSHIP LINE ROAD**

**INDIANAPOLIS, INDIANA 46260**

**\$25/SF - FULL SERVICE**

Nestled in a thriving medical hub, 8071 Township Line Rd offers exceptional proximity to Ascension St. Vincent Hospital. This premier professional medical building is ideal for healthcare providers, medical offices, and related businesses looking to establish themselves in a highly accessible and reputable location.

## Available Medical Office Suites:

- **Suite 100 – 2,416 sq. ft.**
  - Former dental office with a ready layout for any dental or medical practice. Featuring patient-friendly space with treatment rooms, administrative areas, and a welcoming reception area.
- **Suite 105 – 2,393 sq. ft.**
  - A versatile suite with a large open space and four private offices. Perfect for medical practitioners, therapy centers, or administrative medical services needing a flexible floor plan.
- **Suite 110 – 1,743 sq. ft.**
  - This suite offers two expansive rooms, making it ideal for educational use such as training sessions, health seminars, or classroom-based activities. Adaptable to a variety of health-focused operations.
- **Suite 120 – 4,650 sq. ft.**
  - Formerly a lab, this spacious suite is perfect for research facilities, testing centers, or any health-related business requiring laboratory capabilities. Ample space to customize to your needs.

## Asking Rate: \$25 Full Service

With the owner occupying the second floor, you'll benefit from responsive property management and a well-maintained environment. This is a unique opportunity to establish your practice or medical business in a high-visibility area with strong professional support. Don't miss out on this prime leasing opportunity! Contact us today to schedule a tour and explore how 8071 Township Line Rd can support your business growth!



**TERESA HARWOOD, CCIM**

Cell: 317.354.5236  
tharwood@kw.com

**MORGAN MATHAUER**

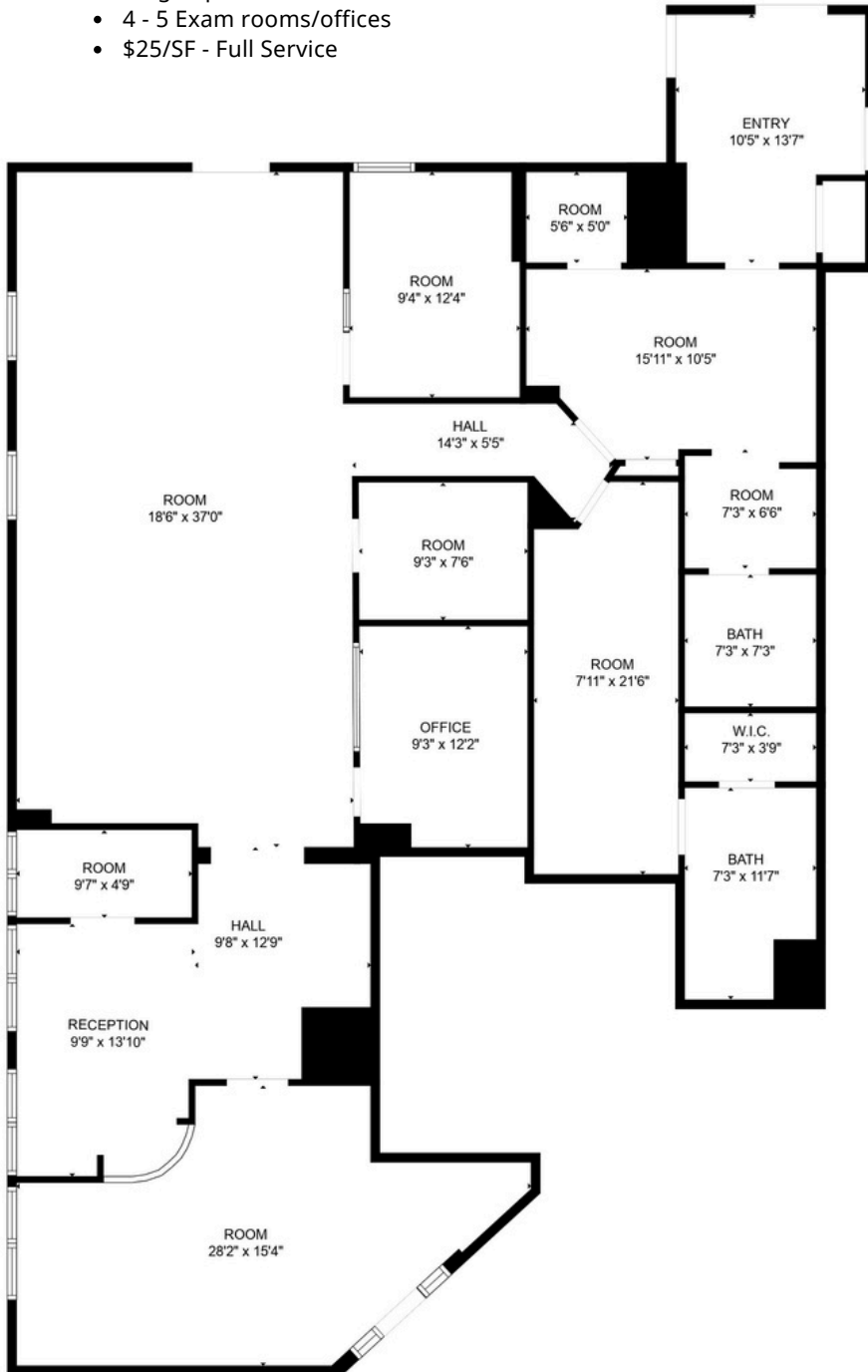
Office: 317.455.8111  
Cell: 765-318-8053  
mmathauer@kw.com

48 N Emerson Avenue, STE 300,  
Greenwood, IN 46143 - United States  
[www.harwoodcommercialgroup.com](http://www.harwoodcommercialgroup.com)



## Suite 100 Highlights

- Former dental office
- 2,416 SF
- Waiting room
- Receptionist area
- Large open room
- 4 - 5 Exam rooms/offices
- \$25/SF - Full Service



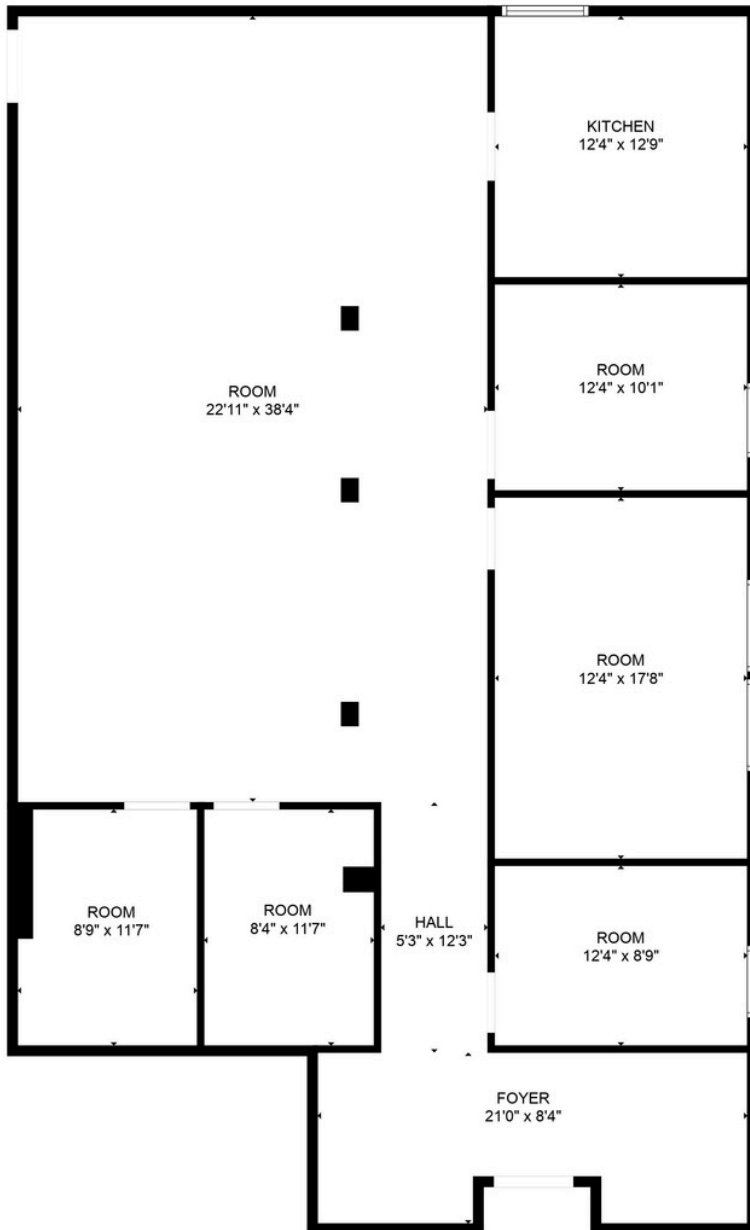
**TERESA HARWOOD, CCIM**  
 Cell: 317.354.5236  
 tharwood@kw.com

**MORGAN MATHAUER**  
 Office: 317.455.8111  
 Cell: 765-318-8053  
 mmathauer@kw.com

48 N Emerson Avenue, STE 300,  
 Greenwood, IN 46143 - United States  
 www.harwoodcommercialgroup.com

## Suite 105 Highlights

- Versatile Suite
- 2,393 SF
- Large open room
- 4 - 5 private offices
- Kitchen
- \$25/SF - Full Service



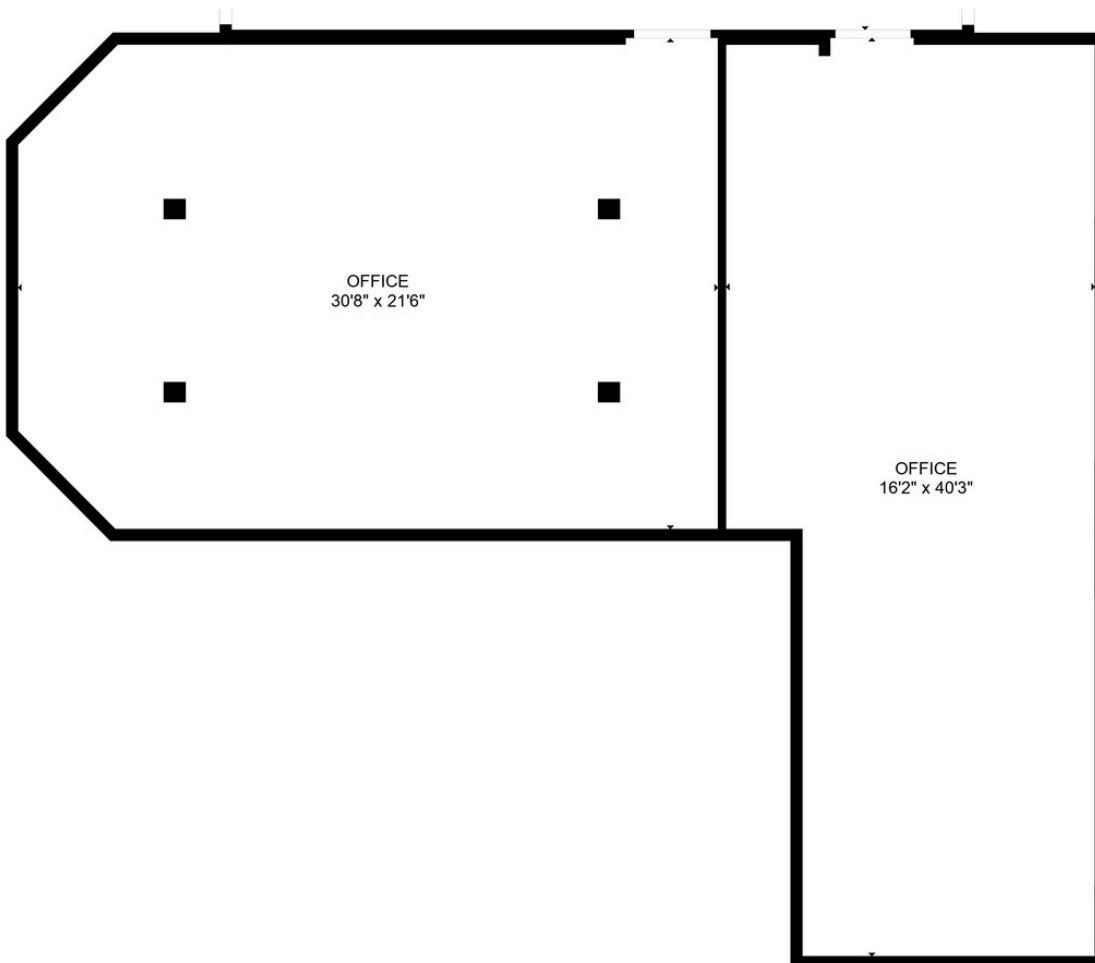
**TERESA HARWOOD, CCIM**  
 Cell: 317.354.5236  
 tharwood@kw.com

**MORGAN MATHAUER**  
 Office: 317.455.8111  
 Cell: 765-318-8053  
 mmathauer@kw.com

48 N Emerson Avenue, STE 300,  
 Greenwood, IN 46143 - United States  
 www.harwoodcommercialgroup.com

## Suite 110 Highlights

- 1,743 SF
- 2 Expansive rooms
- \$25/SF - Full Service



**TERESA HARWOOD, CCIM**

Cell: 317.354.5236  
tharwood@kw.com

**MORGAN MATHAUER**

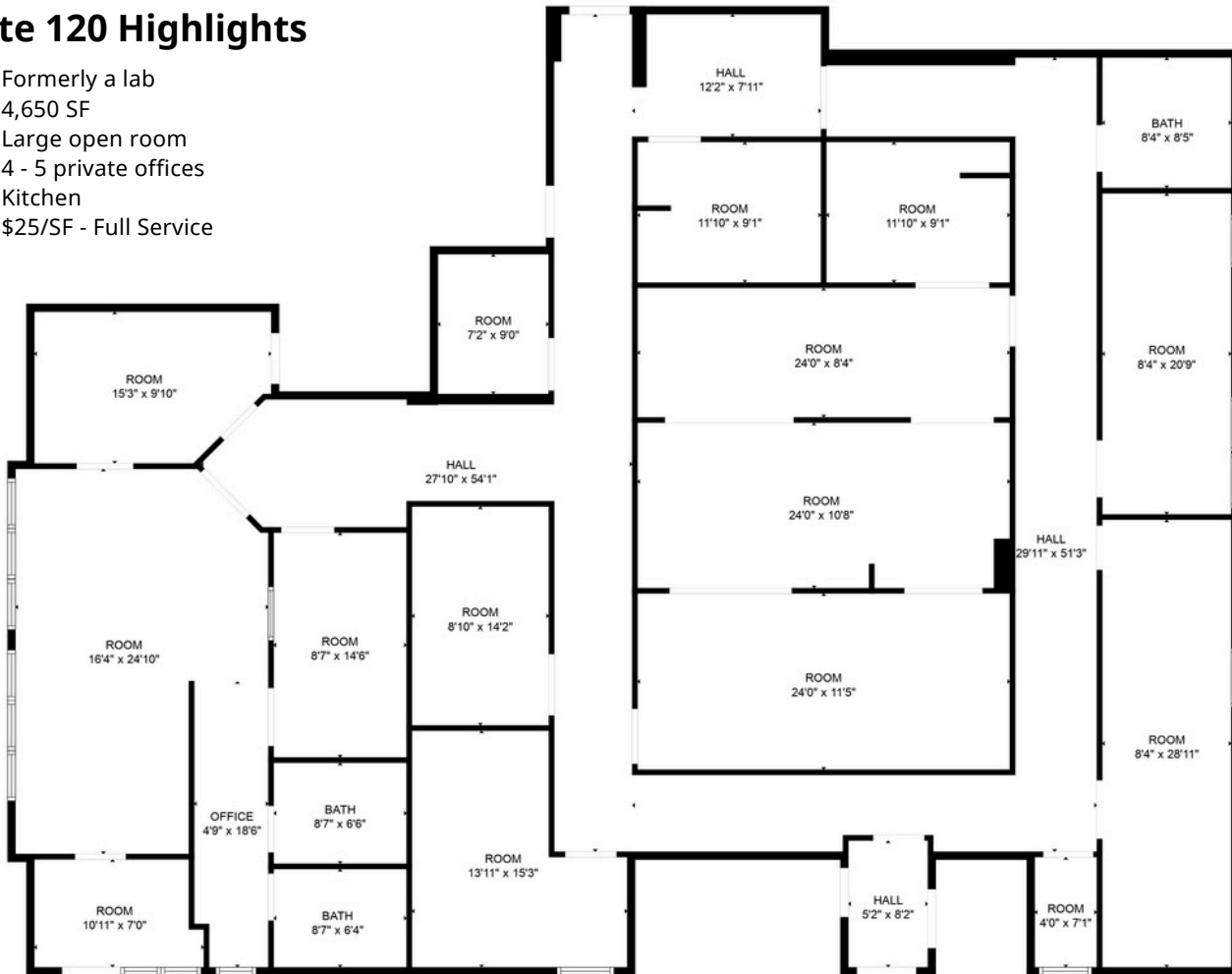
Office: 317.455.8111  
Cell: 765-318-8053  
mmathauer@kw.com

48 N Emerson Avenue, STE 300,  
Greenwood, IN 46143 - United States  
www.harwoodcommercialgroup.com



### Suite 120 Highlights

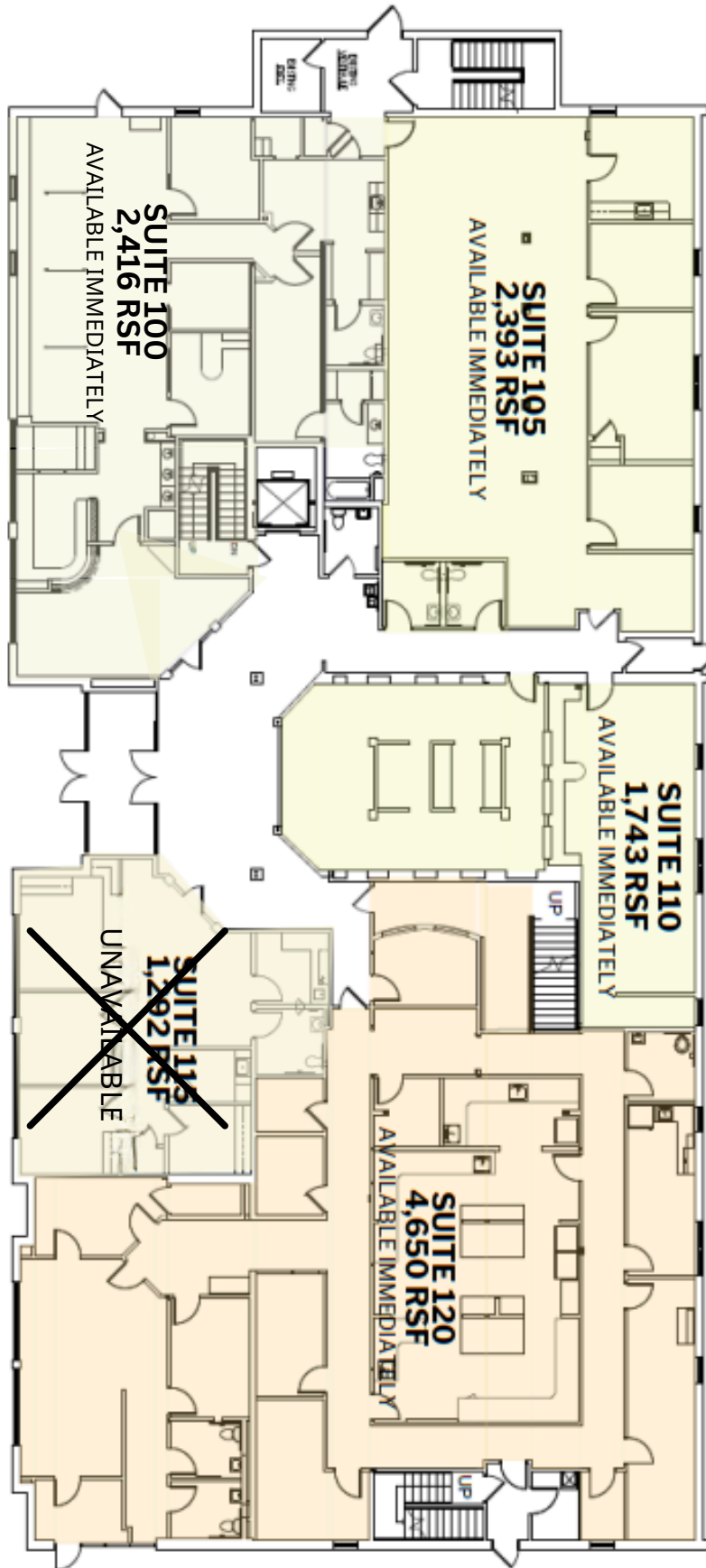
- Formerly a lab
- 4,650 SF
- Large open room
- 4 - 5 private offices
- Kitchen
- \$25/SF - Full Service



**TERESA HARWOOD, CCIM**  
 Cell: 317.354.5236  
 tharwood@kw.com

**MORGAN MATHAUER**  
 Office: 317.455.8111  
 Cell: 765-318-8053  
 mmathauer@kw.com

48 N Emerson Avenue, STE 300,  
 Greenwood, IN 46143 - United States  
 www.harwoodcommercialgroup.com



**TERESA HARWOOD, CCIM**  
Cell: 317.354.5236  
tharwood@kw.com

**MORGAN MATHAUER**  
Office: 317.455.8111  
Cell: 765-318-8053  
mmathauer@kw.com

48 N Emerson Avenue, STE 300,  
Greenwood, IN 46143 - United States  
www.harwoodcommercialgroup.com