

AVAILABILITY

Suite E: 2,650 SF

- Rate: Negotiable
- Recessed Loading Dock
- Conditioned Office Area
- LED Lighting

Suite P: 1,680 SF

- Rate: Negotiable
- Open Warehouse
- One (1) Drive-In
- LED Lighting

PROPERTY FEATURES

- Estimated OPEX: \$4.80 PSF
- Available Immediately
- Zoning: I-4, Fairfax County
- 16' Ceiling Height
- Conveniently located in the heart of Merrifield, within walking distance to Dunn Loring/Merrifield Metro and close to I-495, I-66, and Route 50
- Restaurants, Retail, & Hotels within walking distance
- Parking Ratio: 1/1,000 SF

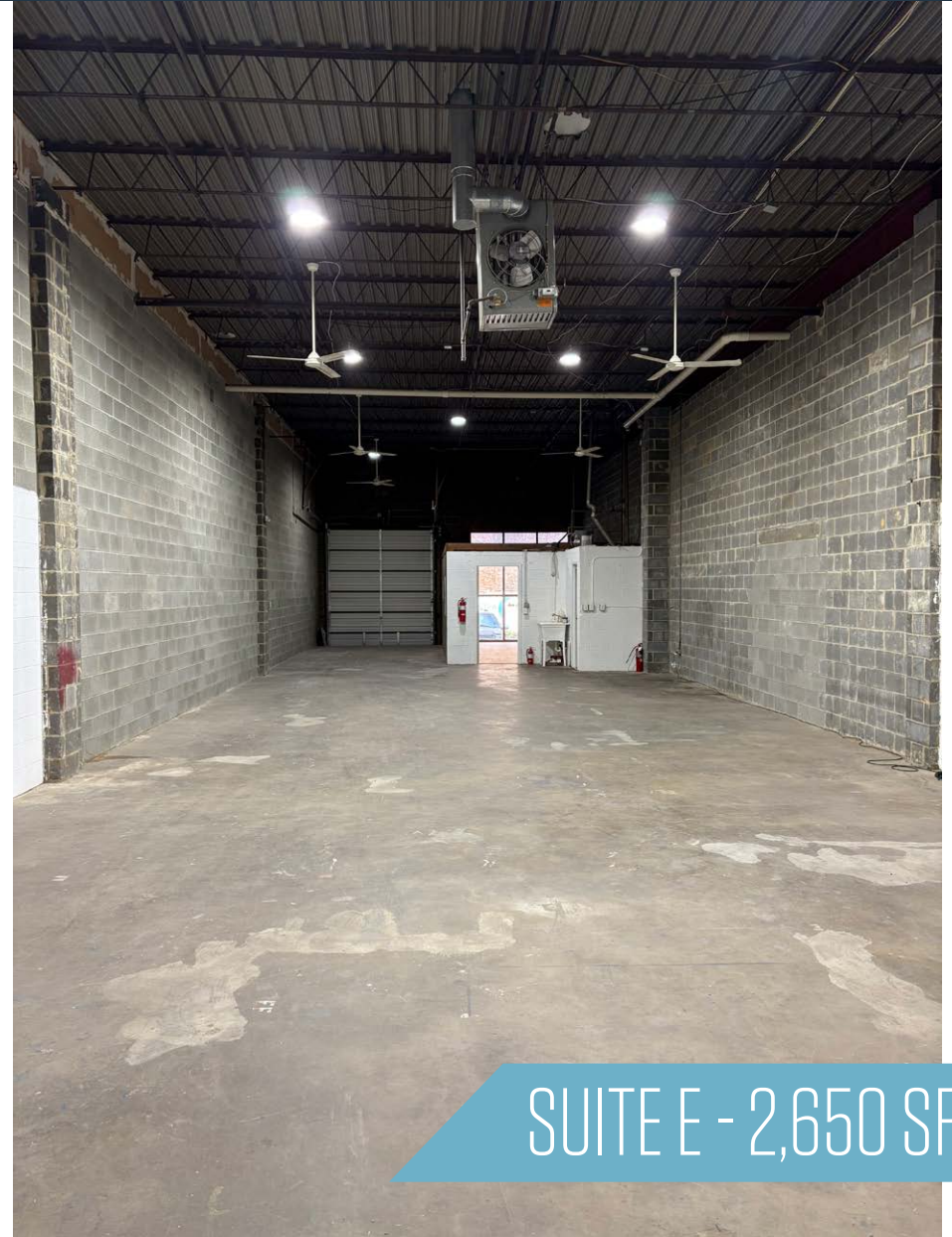
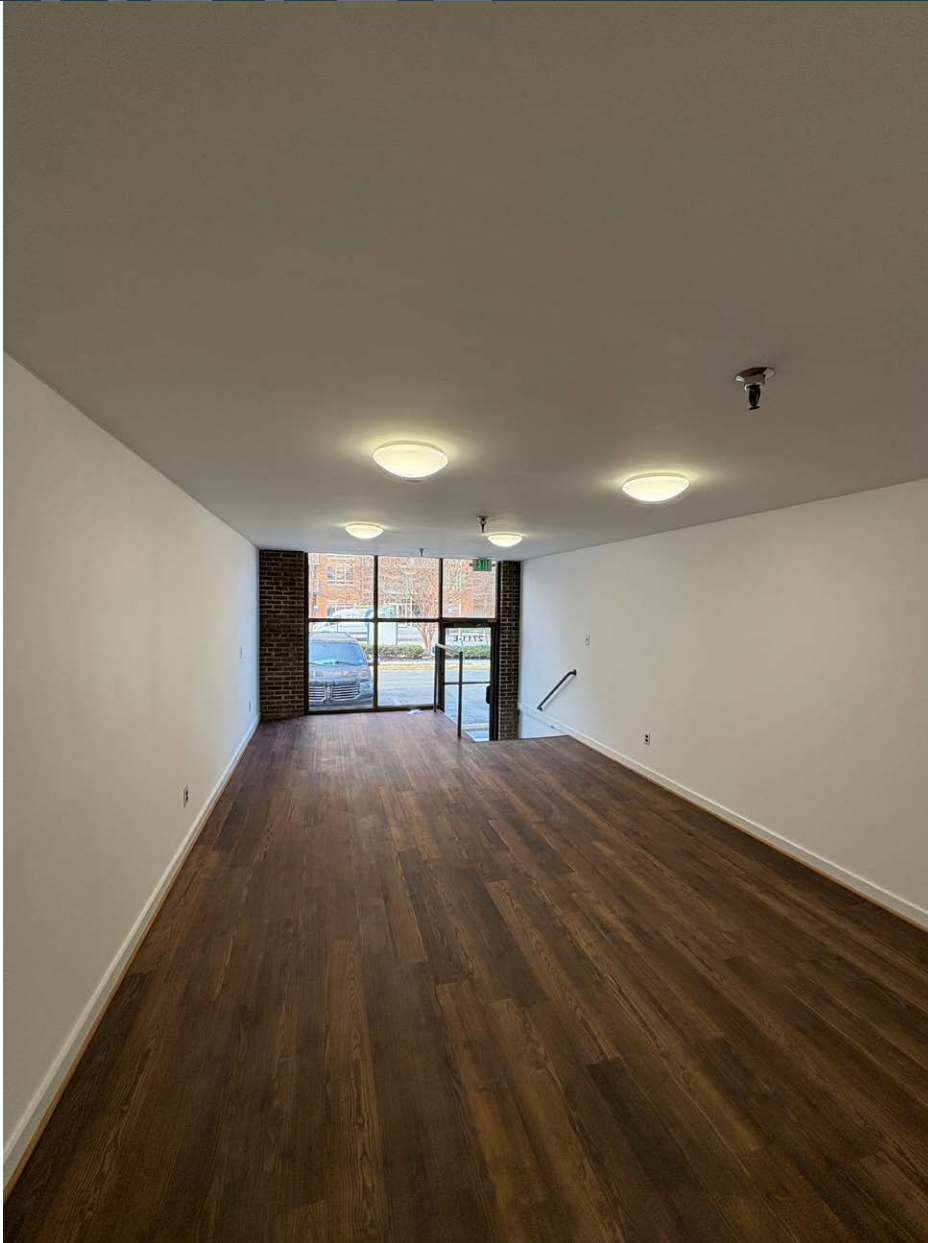
RYAN MOODY

rmoody@klnb.com | 703-268-2739

KEENAN WOOFER

kwoofer@klnb.com | 703-268-2744

klnb.com



SUITE E - 2,650 SF

RYAN MOODY

rmood@klnb.com | 703-268-2739

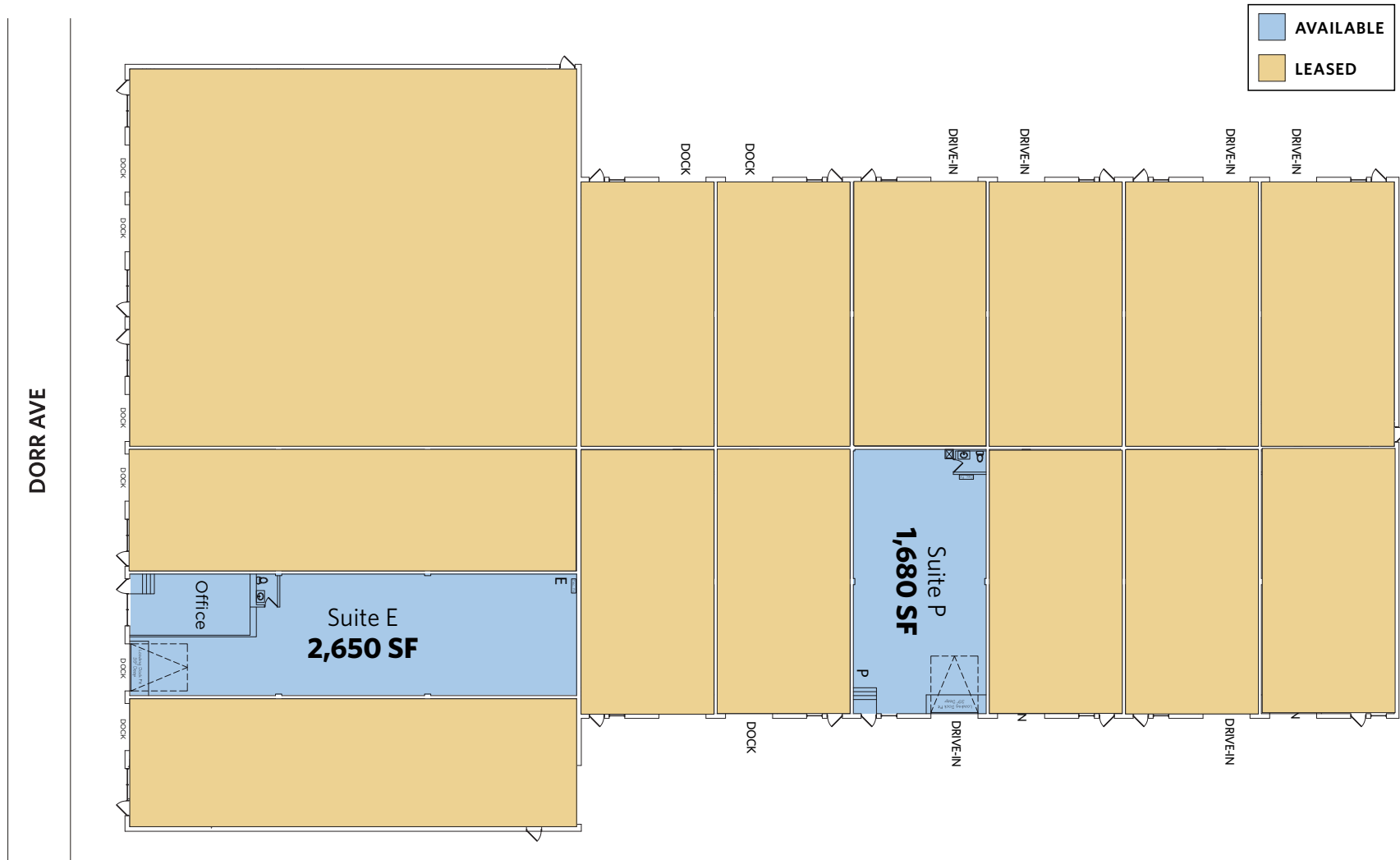
KEENAN WOOFER

kwoof@klnb.com | 703-268-2744

FLOOR PLAN

LEE-HI INDUSTRIAL PARK

2711 DORR AVENUE, FAIRFAX, VIRGINIA



[CLICK TO VIEW PROPERTY WEBSITE](#)



NAIklnb

8065 Leesburg Pike, Suite 700
Vienna, VA 22182

While we have no reason to doubt the accuracy of any of the information supplied, we cannot, and do not, guarantee its accuracy. All information should be independently verified prior to a purchase or lease of the property. We are not responsible for errors, omissions, misuse, or misinterpretation of information contained herein and make no warranty of any kind, express or implied, with respect to the property or any other matters.