

FOR LEASE SHORT TERM INDUSTRIAL

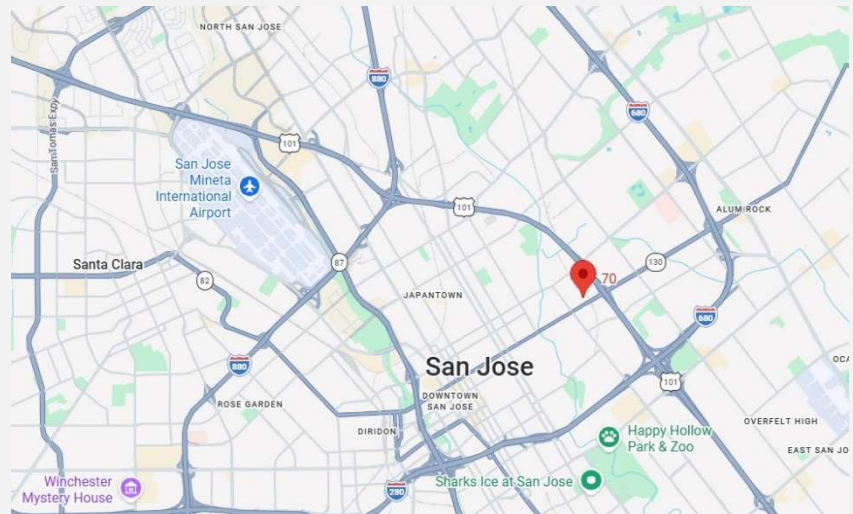
KPA
COMMERCIAL

70-80 N. 27TH STREET
SAN JOSE, CA



PROPERTY SUMMARY

- Available Space: ±10,000 – 21,244 SF
- Ceiling Height: 17' Clear Height
- 14'x14' Grade Doors, Power: 2000 amps
- Sprinklered, 2.5/1,000 Parking Ratio
- Yard Space Available for Full Building User
- Rate: \$1 psf NNN, plus opex
- Adjacent to Proposed BART Expansion (Alum Rock Station)
- Zoning: HI (Heavy Industrial), Undergoing Rezone to Urban Village by Year End 2025 Per City Planning*
- Easy Access to 680/101/280/87/SJ Airport
- Call to Tour



Kevin Peixoto
KPA Commercial, Inc.
408.898.0177
CalDRE No. 01411086
kevin@kpacommercial.com

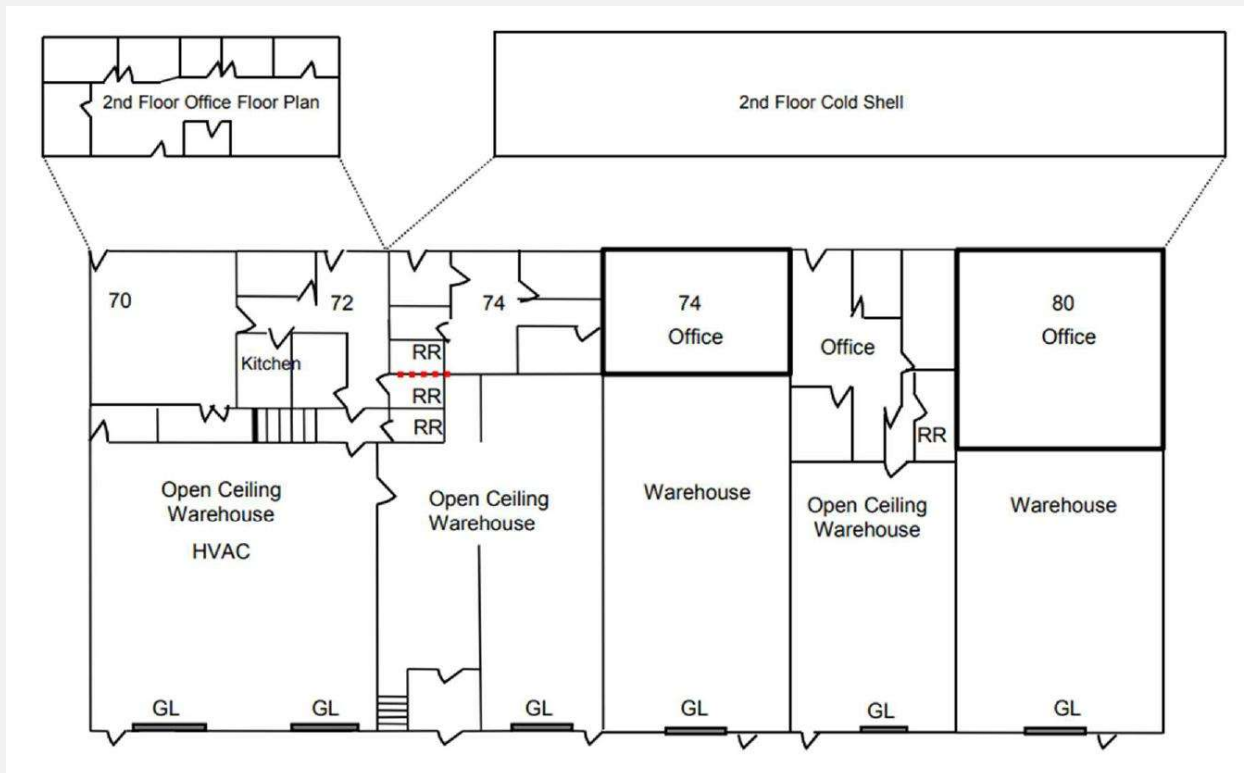
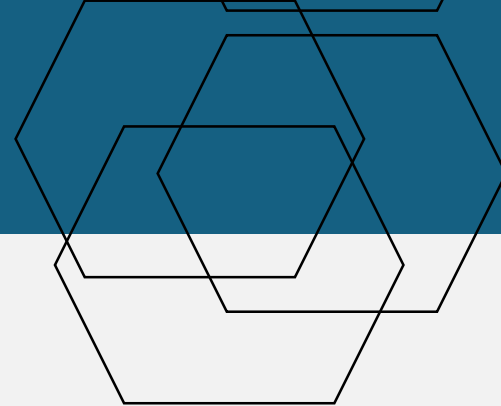
KPACOMMERCIAL.COM

The information contained herein was obtained from sources believed reliable; however, KPA Commercial, Inc. and its agents make no guarantee, warranty or representation, either expressed or implied, as to the completeness or accuracy thereof. The presentation of this property is submitted subject to errors, omissions, change of price, statements of income and expenses or conditions prior to sale or lease, or withdrawal without notice. Prospective Tenants and Buyers should consult their accountant, legal counsel or other professional advisor.

FOR LEASE SHORT TERM INDUSTRIAL

KPA
COMMERCIAL

70-80 N. 27TH STREET
SAN JOSE, CA



*Not to Scale

Kevin Peixoto
KPA Commercial, Inc.
408.898.0177
CalDRE No. 01411086
kevin@kpacommercial.com

KPACOMMERCIAL.COM

The information contained herein was obtained from sources believed reliable; however, KPA Commercial, Inc. and its agents make no guarantee, warranty or representation, either expressed or implied, as to the completeness or accuracy thereof. The presentation of this property is submitted subject to errors, omissions, change of price, statements of income and expenses or conditions prior to sale or lease, or withdrawal without notice. Prospective Tenants and Buyers should consult their accountant, legal counsel or other professional advisor.