

2 CORPORATE PARK

IRVINE, CA

OFFICE SPACE FOR LEASE - ±2,440 SF - ±3,002 SF



For more information, please contact:

CARTER HARRINGTON

Lic. #01762924

949.724.4710

charrington@lee-associates.com

BRIAN GARBUTT

Lic. #01215482

949.724.4721

bgarbutt@lee-associates.com

ALEJANDRO SHERRATT

Lic. #02159392

949.724.4740

asherratt@lee-associates.com

**LEE &
ASSOCIATES**

COMMERCIAL REAL ESTATE SERVICES
NEWPORT BEACH



2 CORPORATE PARK

IRVINE, CA



Building Signage Available



Elevator Served, 2-Story Office Building



Numerous Retail and Food Amenities



Secure Surface and Covered Parking

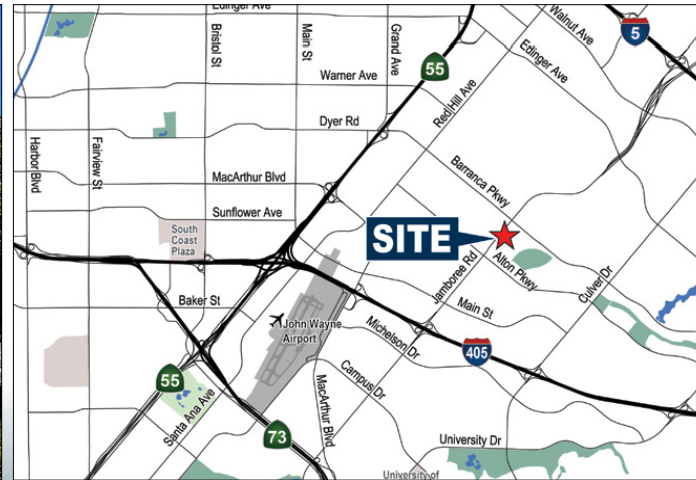


On-site proactive management with long term hold.



Strategically located off Jamboree with easy freeway access to the 405, 5, 73, 241

RSF	SUITE	DESCRIPTION
2,440	102	8 offices, kitchenette with sink, IT/storage room. 2nd generation suite.
2,668	106	New spec suite with 7 offices, conference room, kitchen with a sink, small open area.
3,002	108	Reception, conference room, 2 window offices, open area, and a break room with a sink.
2,982	201	6 offices, conference room, open area, kitchenette with sink.



For more information, please contact:

CARTER HARRINGTON

Lic. #01762924

949.724.4710

charrington@lee-associates.com

BRIAN GARBUTT

Lic. #01215482

949.724.4721

bgarbutt@lee-associates.com

ALEJANDRO SHERRATT

Lic. #02159392

949.724.4740

asherratt@lee-associates.com

LEE & ASSOCIATES

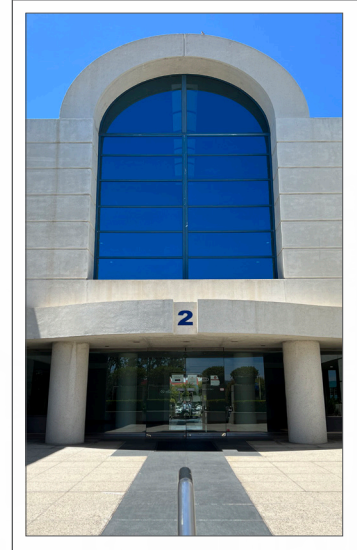
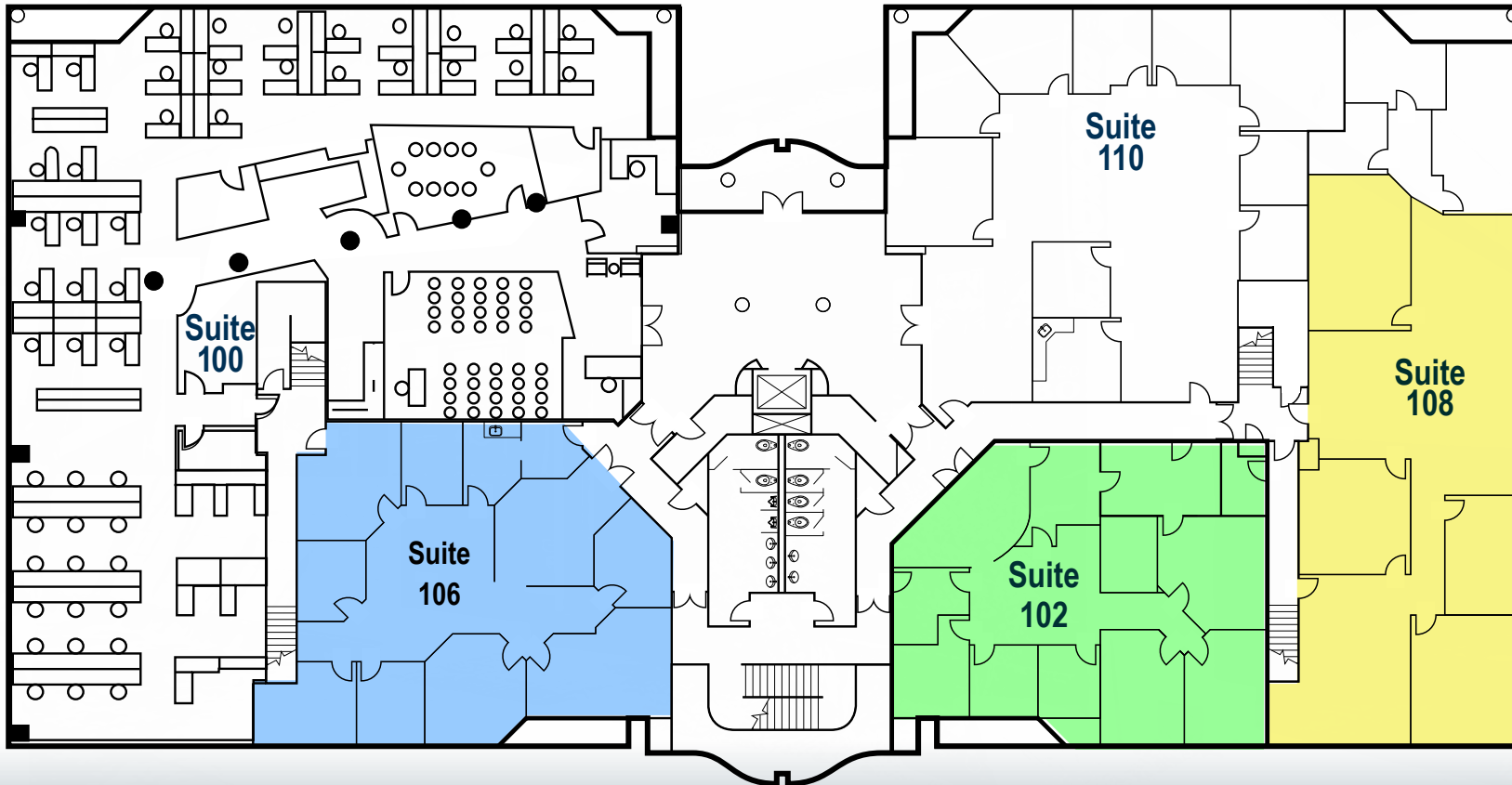
COMMERCIAL REAL ESTATE SERVICES
NEWPORT BEACH



2 CORPORATE PARK

IRVINE, CA

FIRST FLOOR AVAILABILITY - ±2,440 - ±3,002 SQUARE FEET



SUITE	RSF	RATE
102	2,440	\$2.45* FSG
106	2,668	\$2.45* FSG
108	3,002	\$2.45* FSG

Suites with * have a start rate of \$2.45 for a 3-year deal, which goes to \$2.65 year 2

For more information, please contact:

CARTER HARRINGTON

Lic. #01762924

949.724.4710

charrington@lee-associates.com

BRIAN GARBUTT

Lic. #01215482

949.724.4721

bgarbutt@lee-associates.com

ALEJANDRO SHERRATT

Lic. #02159392

949.724.4740

asherratt@lee-associates.com

LEE & ASSOCIATES

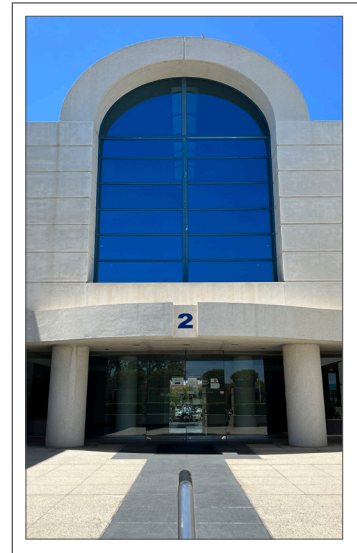
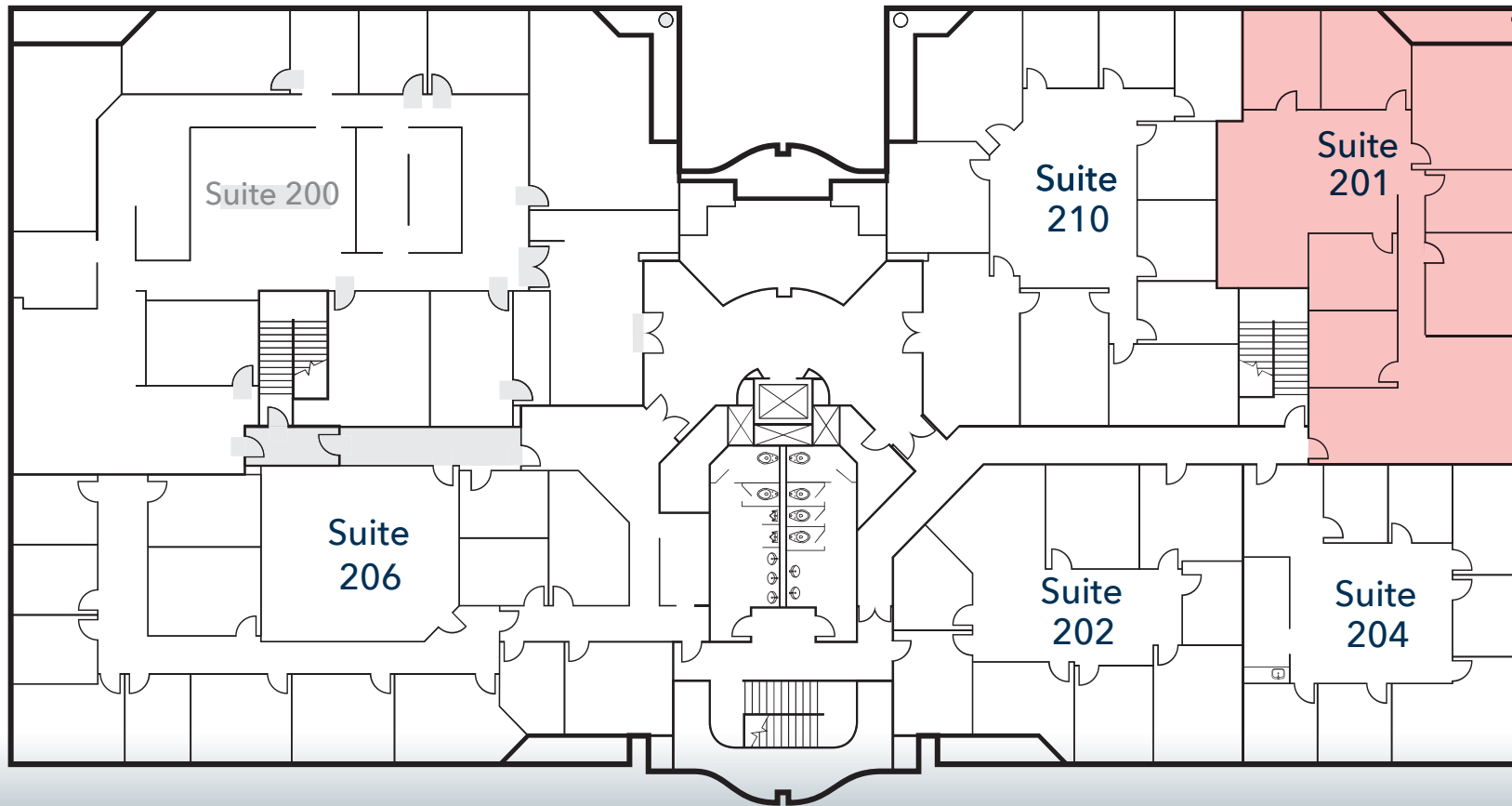
COMMERCIAL REAL ESTATE SERVICES
NEWPORT BEACH



2 CORPORATE PARK

IRVINE, CA

SECOND FLOOR AVAILABILTY - ±2,440 - ±2,982 SQUARE FEET



SUITE	RSF	RATE
201	2,982	\$2.45* FSG

Suites with * have a start rate of \$2.45 for a 3-year deal, which goes to \$2.65 year 2

For more information, please contact:

CARTER HARRINGTON

Lic. #01762924

949.724.4710

charrington@lee-associates.com

BRIAN GARBUTT

Lic. #01215482

949.724.4721

bgarbutt@lee-associates.com

ALEJANDRO SHERRATT

Lic. #02159392

949.724.4740

asherratt@lee-associates.com

LEE & ASSOCIATES

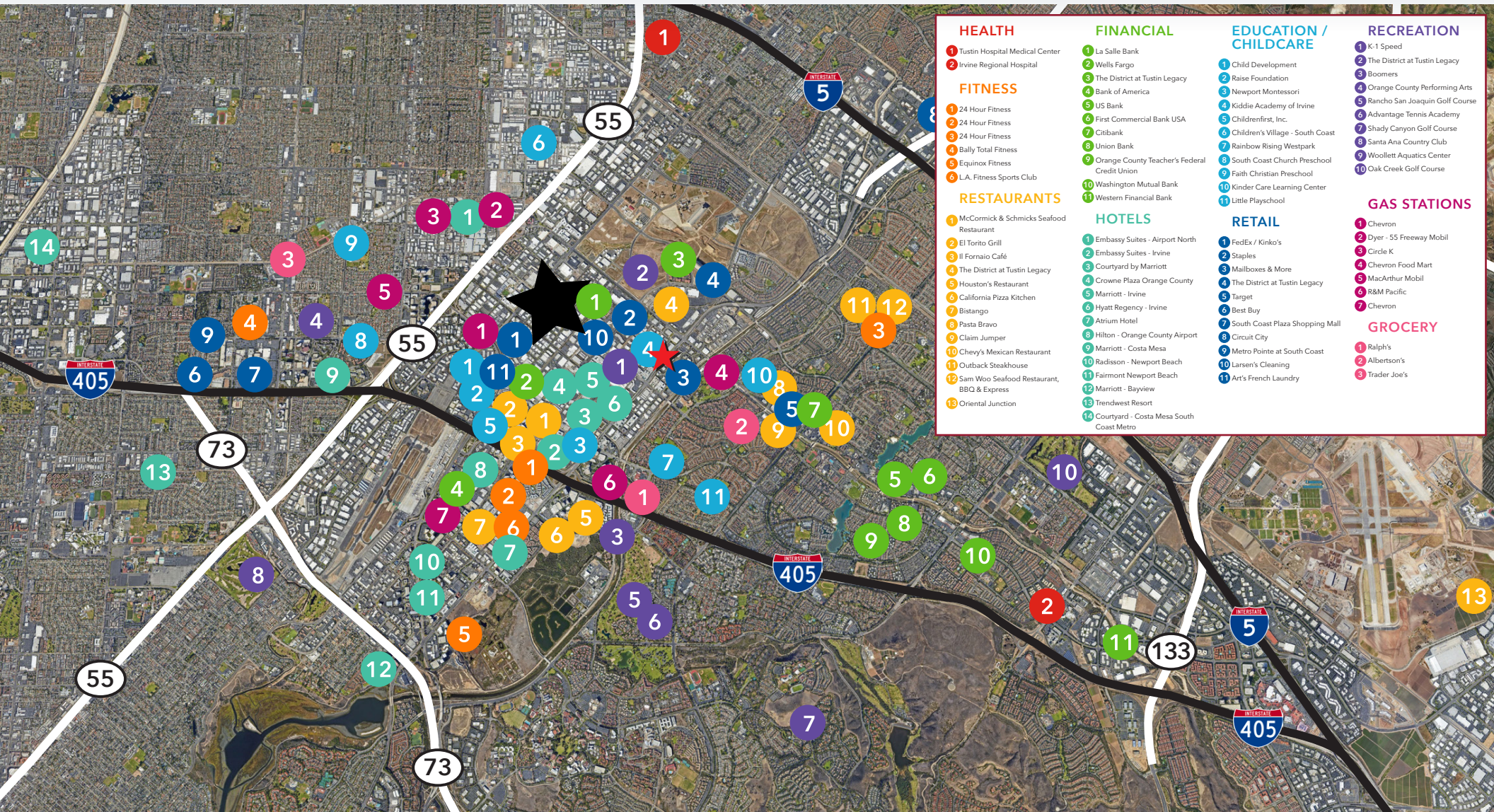
COMMERCIAL REAL ESTATE SERVICES
NEWPORT BEACH



2 CORPORATE PARK

IRVINE, CA

AMENITIES MAP



HEALTH

- 1 Tustin Hospital Medical Center
- 2 Irvine Regional Hospital

FITNESS

- 1 24 Hour Fitness
- 2 24 Hour Fitness
- 3 24 Hour Fitness
- 4 Bally Total Fitness
- 5 Equinox Fitness
- 6 L.A. Fitness Sports Club

RESTAURANTS

- 1 McCormick & Schmicks Seafood Restaurant
- 2 El Torito Grill
- 3 Il Fornaio Café
- 4 The District at Tustin Legacy
- 5 Houston's Restaurant
- 6 California Pizza Kitchen
- 7 Bistango
- 8 Pasta Bravo
- 9 Claim Jumper
- 10 Chevy's Mexican Restaurant
- 11 Outback Steakhouse
- 12 Sam Woo Seafood Restaurant, BBQ & Express
- 13 Oriental Junction

FINANCIAL

- 1 La Salle Bank
- 2 Wells Fargo
- 3 The District at Tustin Legacy
- 4 Bank of America
- 5 US Bank
- 6 First Commercial Bank USA
- 7 Citibank
- 8 Union Bank
- 9 Orange County Teacher's Federal Credit Union
- 10 Washington Mutual Bank
- 11 Western Financial Bank

HOTELS

- 1 Embassy Suites - Airport North
- 2 Embassy Suites - Irvine
- 3 Courtyard by Marriott
- 4 Crowne Plaza Orange County
- 5 Marriott - Irvine
- 6 Hyatt Regency - Irvine
- 7 Atrium Hotel
- 8 Hilton - Orange County Airport
- 9 Marriott - Costa Mesa
- 10 Radisson - Newport Beach
- 11 Fairmont Newport Beach
- 12 Marriott - Bayview
- 13 Trendwest Resort
- 14 Courtyard - Costa Mesa South Coast Metro

EDUCATION / CHILD CARE

- 1 Child Development
- 2 Raise Foundation
- 3 Newport Montessori
- 4 Kiddie Academy of Irvine
- 5 Childrenfirst, Inc.
- 6 Children's Village - South Coast
- 7 Rainbow Rising Westpark
- 8 South Coast Church Preschool
- 9 Faith Christian Preschool
- 10 Kinder Care Learning Center
- 11 Little Playschool

RETAIL

- 1 FedEx / Kinko's
- 2 Staples
- 3 Mailboxes & More
- 4 The District at Tustin Legacy
- 5 Target
- 6 Best Buy
- 7 South Coast Plaza Shopping Mall
- 8 Circuit City
- 9 Metro Pointe at South Coast
- 10 Larsen's Cleaning
- 11 Art's French Laundry

RECREATION

- 1 K-1 Speed
- 2 The District at Tustin Legacy
- 3 Boomers
- 4 Orange County Performing Arts
- 5 Rancho San Joaquin Golf Course
- 6 Advantage Tennis Academy
- 7 Shady Canyon Golf Course
- 8 Santa Ana Country Club
- 9 Woollett Aquatics Center
- 10 Oak Creek Golf Course

GAS STATIONS

- 1 Chevron
- 2 Dyer - 55 Freeway Mobil
- 3 Circle K
- 4 Chevron Food Mart
- 5 MacArthur Mobil
- 6 R&M Pacific
- 7 Chevron

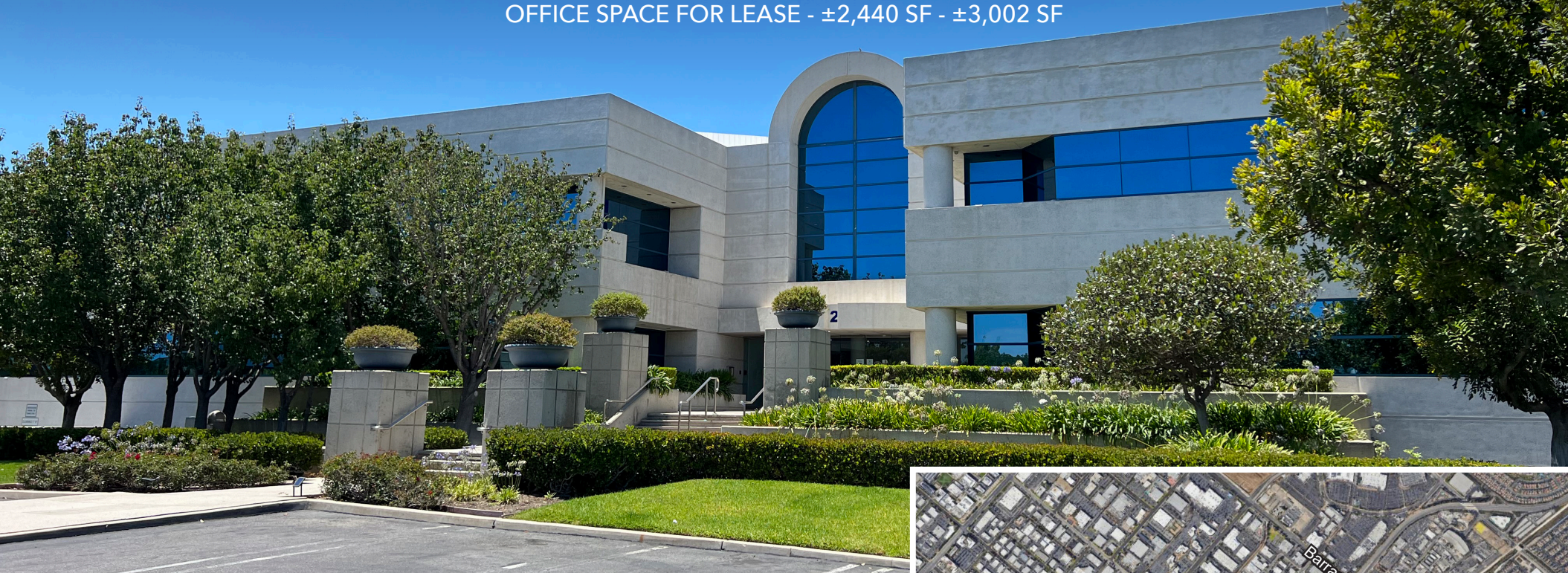
GROCERY

- 1 Ralph's
- 2 Albertson's
- 3 Trader Joe's

2 CORPORATE PARK

IRVINE, CA

OFFICE SPACE FOR LEASE - ±2,440 SF - ±3,002 SF



FOR MORE INFORMATION, CONTACT:

CARTER HARRINGTON

Lic. #01762924
949.724.4710
charrington@lee-associates.com

BRIAN GARBUTT

Lic. #01215482
949.724.4721
bgarbutt@lee-associates.com

ALEJANDRO SHERRATT

Lic. #02159392
949.724.4740
asherratt@lee-associates.com



The information contained herein has been obtained from the property owner or other third party and is provided to you without verification as to accuracy. We (Lee & Associates, its brokers, employees, agents, principals, officers, directors and affiliates) make no warranty or representation regarding the information, property, or transaction. You and your attorneys, advisors and consultants should conduct your own investigation of the property and transaction.

