

2,023 SF MEDICAL OFFICE FOR LEASE

# 1427

*Business Center Court*



DAYTON | OHIO

**CBRE**

# PROPERTY OVERVIEW

FOR LEASE

Strong existing condition second generation Medical Office

Tenant Improvement Options Available

## \$15.50/RSF

NNN Lease Rate

## 2,023±

RSF

## 1993

Year Built

## 3.82/1,000 SF

Parking



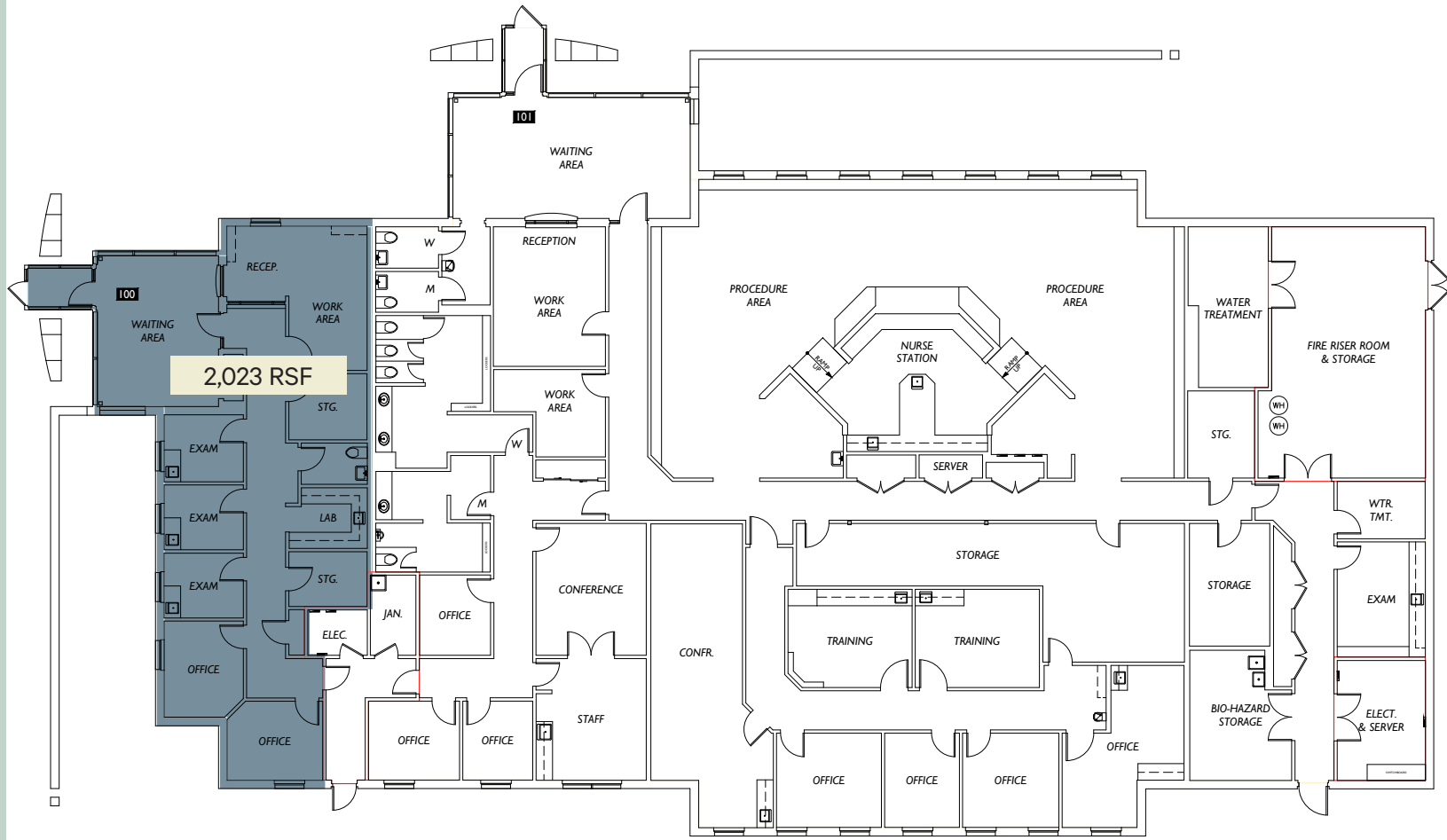
# MAP

South Central Dayton | Great visibility and proximity to US-35



# Floor Plan

# Main Floor





2,023 SF FOR SALE

# 1427

*Business Center Court*

DAYTON | OHIO

**PATRICK  
HEWITT**

Vice President  
312 609 9454  
patrick.hewitt@cbre.com

**MATTHEW  
ARNOVITZ**  
SIOR, CCIM, CPM  
Senior Associate  
937 226 1550  
matt.arnovitz@cbre.com

**CBRE**

© 2025 CBRE, Inc. All rights reserved. This information has been obtained from sources believed reliable but has not been verified for accuracy or completeness. CBRE, Inc. makes no guarantee, representation or warranty and accepts no responsibility or liability as to the accuracy, completeness, or reliability of the information contained herein. You should conduct a careful, independent investigation of the property and verify all information. Any reliance on this information is solely at your own risk. CBRE and the CBRE logo are service marks of CBRE, Inc. All other marks displayed on this document are the property of their respective owners, and the use of such marks does not imply any affiliation with or endorsement of CBRE. Photos herein are the property of their respective owners. Use of these images without the express written consent of the owner is prohibited.