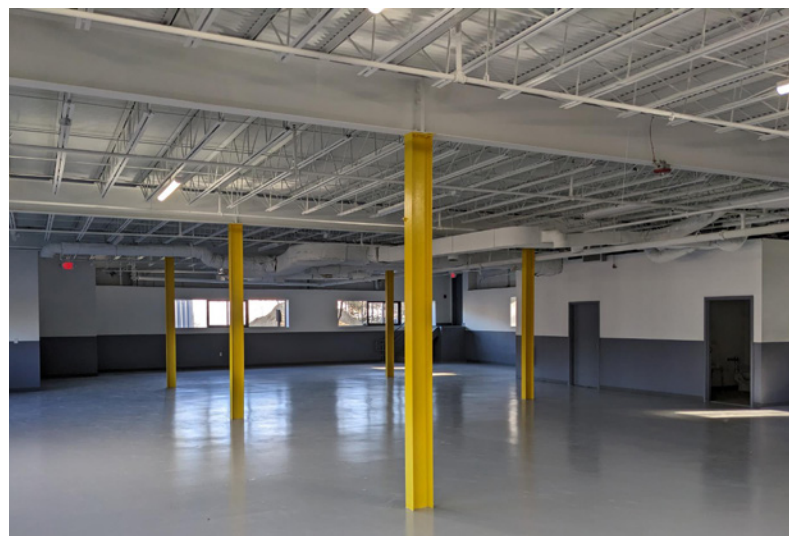


200

Turnpike Road Southborough, MA



6,120 RSF – 23,740 RSF - 3.51 Acres

Joel Aho, *President*

Aho Properties, LLC

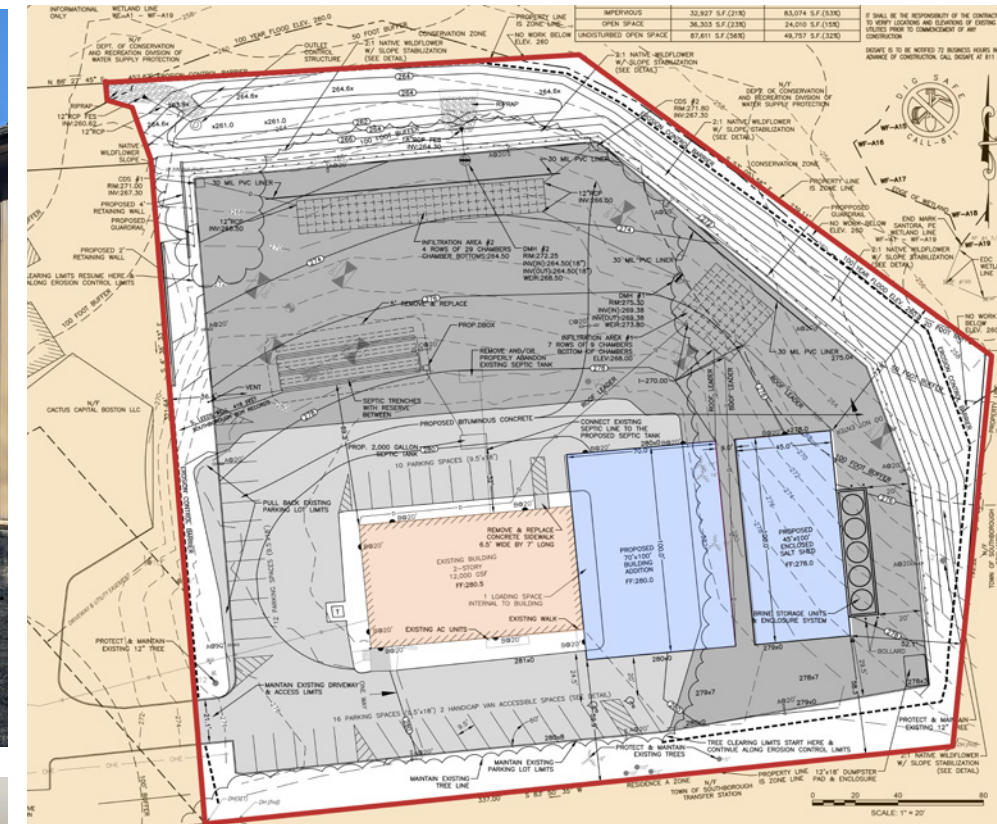
91 Bartlett Street, Marlboro, MA 01752

(508) 868-0216

AHO

PROPERTIES

www.ahoproperties.com



200 Turnpike Rd., Southborough, MA

12,240 RSF - 3.51 Acres - Office/Industrial Building

Existing Building Size: **12,240 RSF** (6,120 RSF on the 1st Floor and 6,120 RSF on the 2nd Floor)

Loading Docks: **One**

Grade Level Doors: **One**

Ceiling Height: **11'3" to ceiling joist (on first floor)**

Utilities: **Private Septic, Town Water, Natural Gas**

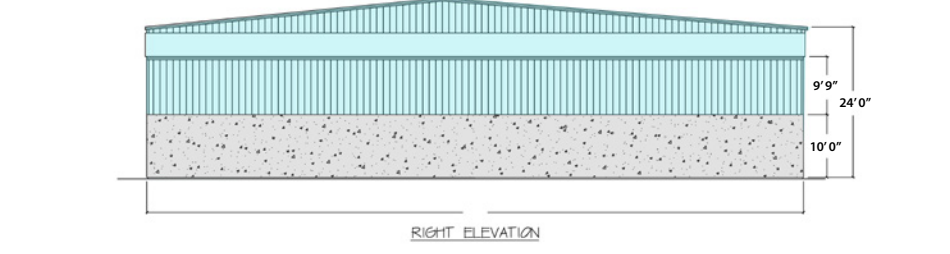
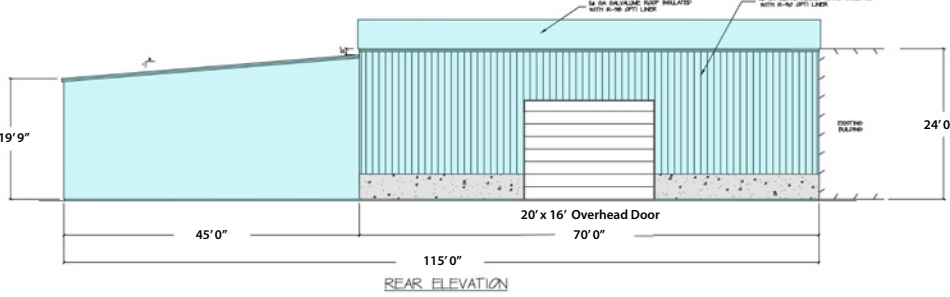
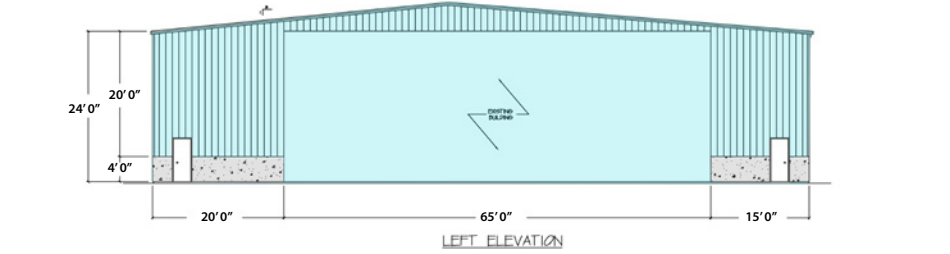
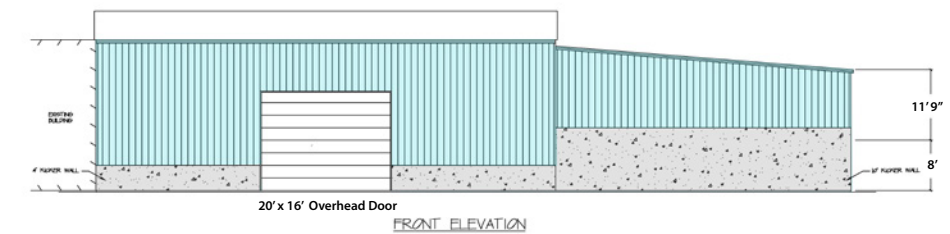
Permitted Building: **7,000 RSF (with adjacent 4,500 SF unheated structure)**

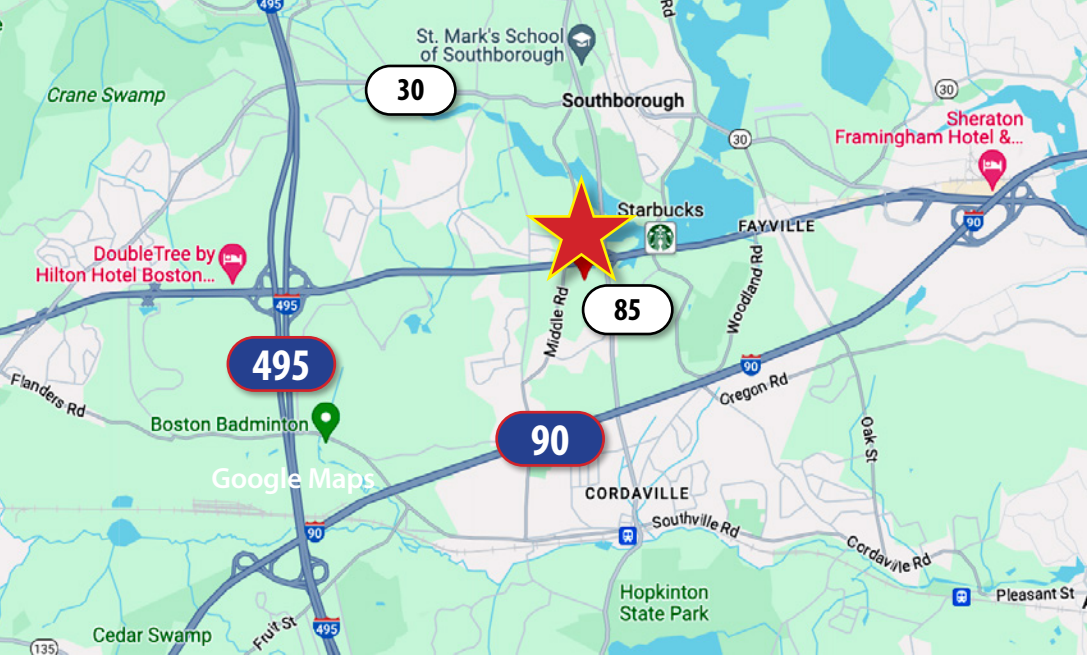
Ceiling Height: **24' to the eaves**

Drive in Doors: **Two 16' x 20' doors on each end (drive through)**

Land Area: **3.51 Acres**

Zoning: **BH**





AHO

PROPERTIES

Aho Properties, LLC
 91 Bartlett Street
 Marlboro, MA 01752
 (508) 868-0216



Joel Aho
President

Email:
joel@ahoprops.com

Cell:
508-868-0216

www.ahoproperties.com

Legal Disclaimer:

All statements and conditions contained herein are subject to errors, omissions, prior sale/lease or removal from the market without notice.

