



# 300

CAMBRIDGE  
STREET  
BOSTON, MA

4,900 SF available

4TH FLOOR

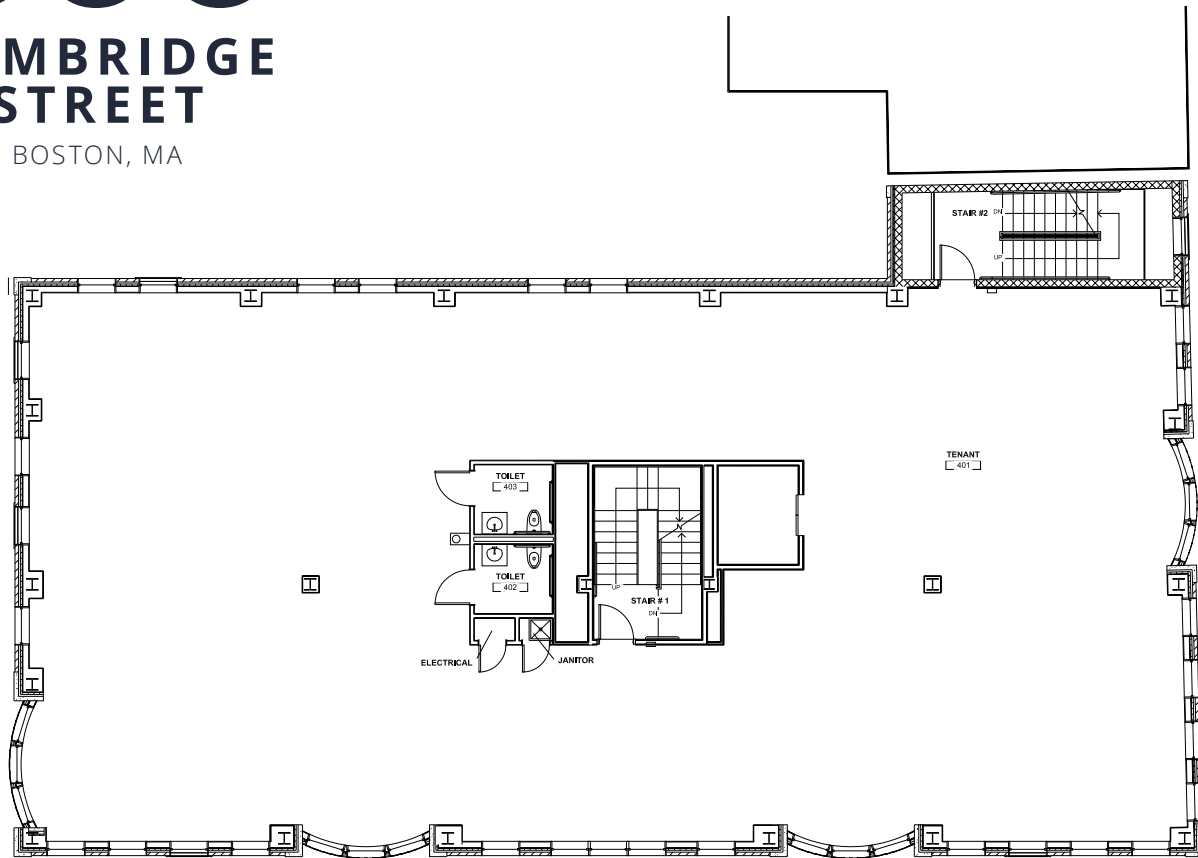
- Local ownership
- High-end finishes
- Adjacent to the Charles/MGH Red Line MBTA stop
- Located across the street from Mass General, Whole Foods, and multiple parking options
- Retail tenants in the building include Sweetgreen & Dunkin Donuts
- 24/7 key-card entry to the building

AVISON  
YOUNG

# 300

## CAMBRIDGE STREET

BOSTON, MA



4th floor - 4,900 SF

**For more information, please contact:**

**Jon Vacca**, Vice President

617.575.2829

[jonathan.vacca@avisonyoung.com](mailto:jonathan.vacca@avisonyoung.com)

**Kirk Weller**, Senior Vice President

617.456.1363

[kirk.weller@avisonyoung.com](mailto:kirk.weller@avisonyoung.com)

© 2025. Avison Young. Information contained herein was obtained from sources deemed reliable and, while thought to be correct, have not been verified. Avison Young does not guarantee the accuracy or completeness of the information presented, nor assumes any responsibility or liability for any errors or omissions therein.

**AVISON  
YOUNG**