



PROPERTY DESCRIPTION

Join Free to be Yoga, 1st State Health and Wellness, White Lily Consignment and Randazzo's Trattoria! Highly visible, street front retail located on the ground floor of this mixed-use building with 28 residential apartments above. This property offers a fresh, upscale atmosphere and will provide a dynamic experience for local residents, employees and visitors alike. The population of Middletown, DE has exploded within the last decade or so and is forecast along with nearby Odessa to be Delaware's largest metropolitan area by 2030!

PROPERTY DETAILS

- **Available Space: 1,518 SF - 3,249 SF**
 - **Suite 103:** 1,518 SF (Ideal for hair/nail salon)
 - **Suite 107:** 1,731 SF
 - **Suite 108:** 1,518 SF
- **Maximum Contiguous:** 3,249 SF
- **Lease Rate:** Please contact leasing agent
- **Traffic Counts:** 16,289 AADT

DEMOGRAPHICS	1 MILE	3 MILES	5 MILES
Total Population	992	17,313	32,702
Total Households	460	7,155	12,457
Average HH Income	\$81,527	\$85,655	\$111,841
Median Age	56.8	44.3	42.9



For More Information, Contact:

Alicia Fox
alicia@dsmre.com
302.283.1800 Office
302.419.5477 Cell

Dan Wham
dwham@dsmre.com
302.283.1800 Office
302.249.9744 Cell

DSM Commercial
Real Estate Services
3304 Old Capitol Trail
Wilmington, DE 19808
dsmre.com



For More Information, Contact:

Alicia Fox
alicia@dsmre.com
302.283.1800 Office
302.419.5477 Cell

Dan Wham
dwham@dsmre.com
302.283.1800 Office
302.249.9744 Cell

DSM Commercial
Real Estate Services
3304 Old Capitol Trail
Wilmington, DE 19808
dsmre.com



For More Information, Contact:

Alicia Fox
alicia@dsmre.com
302.283.1800 Office
302.419.5477 Cell

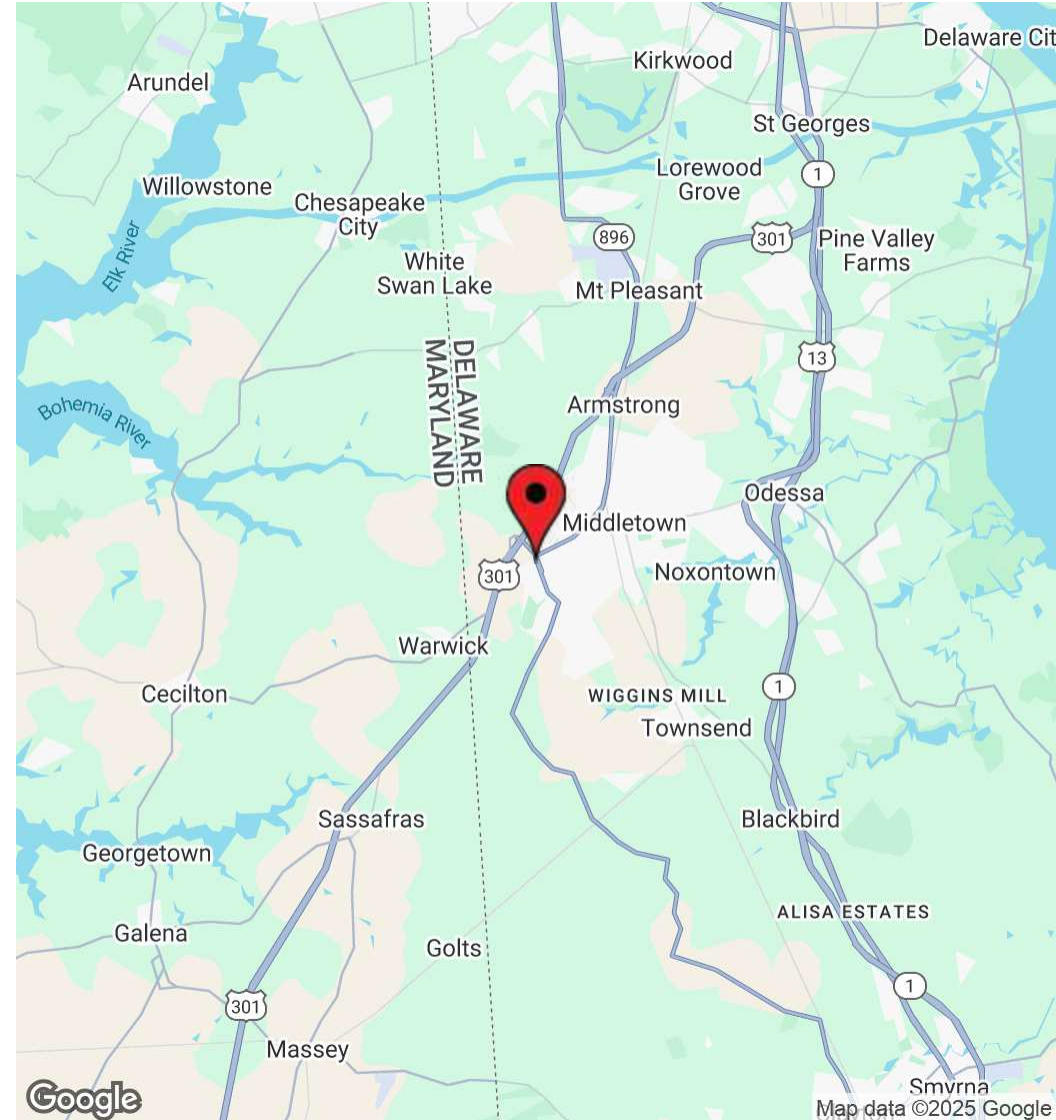
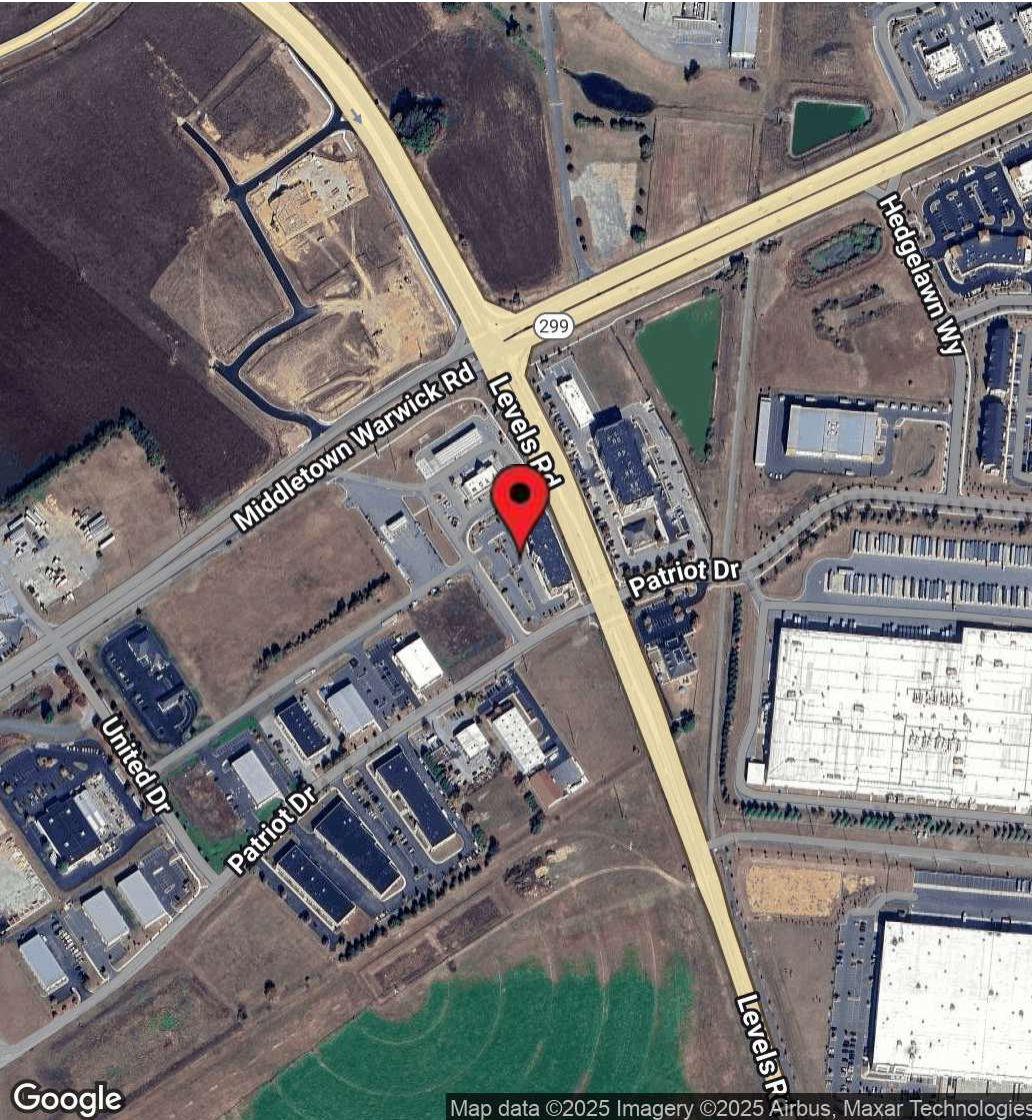
Dan Wham
dwham@dsmre.com
302.283.1800 Office
302.249.9744 Cell

DSM Commercial
Real Estate Services
3304 Old Capitol Trail
Wilmington, DE 19808
dsmre.com

SUMMERTON PLACE

103 Patriot Dr
Middletown, DE 19709

RETAIL SPACE FOR LEASE



For More Information, Contact:

Alicia Fox
alicia@dsmre.com
302.283.1800 Office
302.419.5477 Cell

Dan Wham
dwham@dsmre.com
302.283.1800 Office
302.249.9744 Cell

DSM Commercial
Real Estate Services
3304 Old Capitol Trail
Wilmington, DE 19808
dsmre.com