

PRIME COMMERCIAL LOT AVAILABLE FOR SALE

Lot Size: .34 acres

11415 W. Markham Street, Little Rock, Arkansas 72211

Sale Price: ~~\$650,000~~ Price Reduced - \$575,000

HIGHLIGHTS

High-Visibility Location

Signalized Access

High Traffic Count (27,000 ADT)

Across from National Retail
& Restaurant Uses

All Utilities at the Site



Offered Exclusively by:



5507 Ranch Drive, Suite 201 / Little Rock, 72223

Contact: Jill Bryant

Principal Broker

License: PB00048556

Office: 501-868-9790 Ext 113 (1 for VoiceMail)

Text: 501-604-4551

Email: jill@westgroupllc.com

W. Markham St



110'

SITE
.34 acres

To Traffic Signal →

137.49'

Building has been removed

Goodyear

Common Drive

135.13'

Common Drive

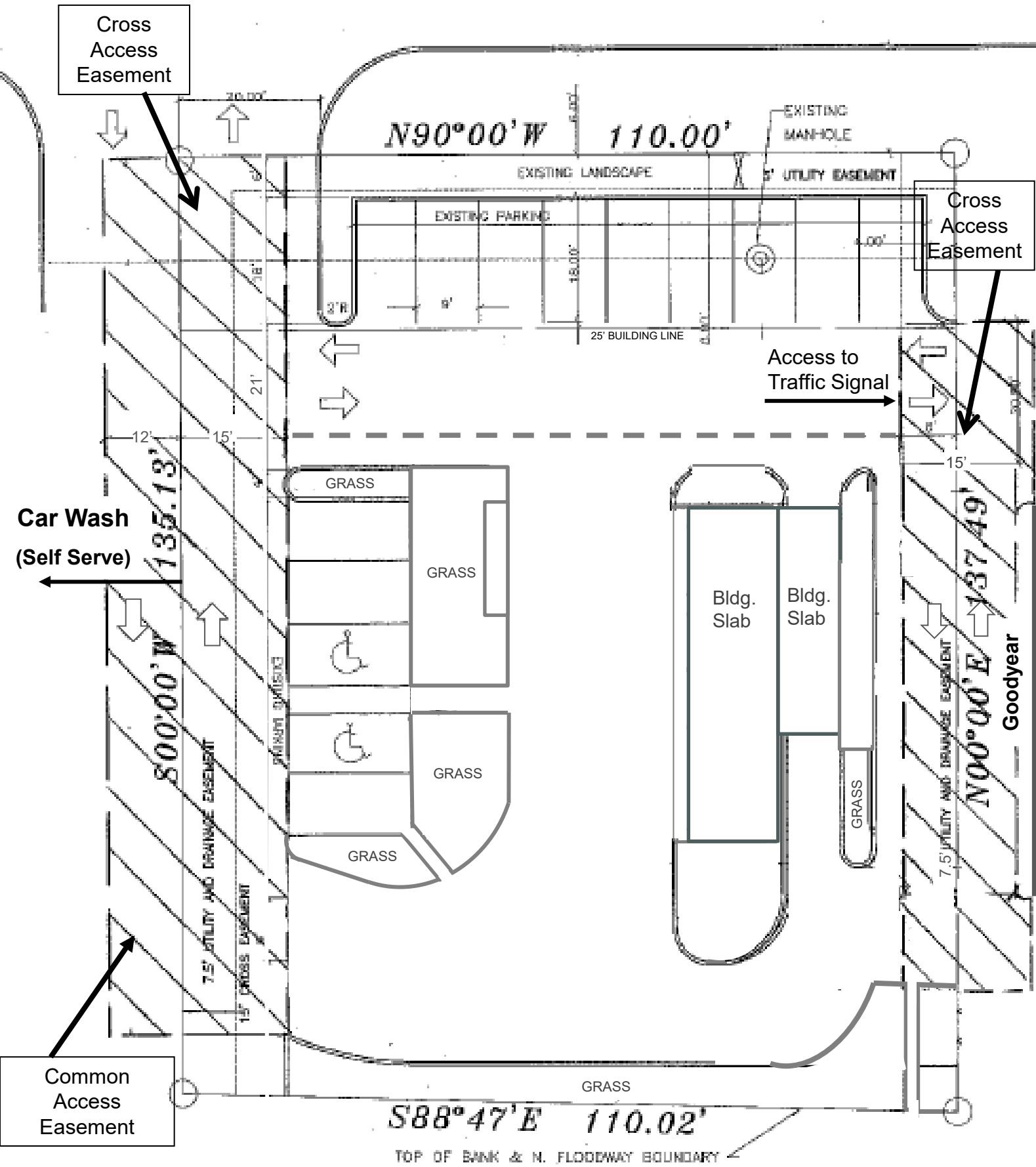
Car Wash (Self-Serve)

110'

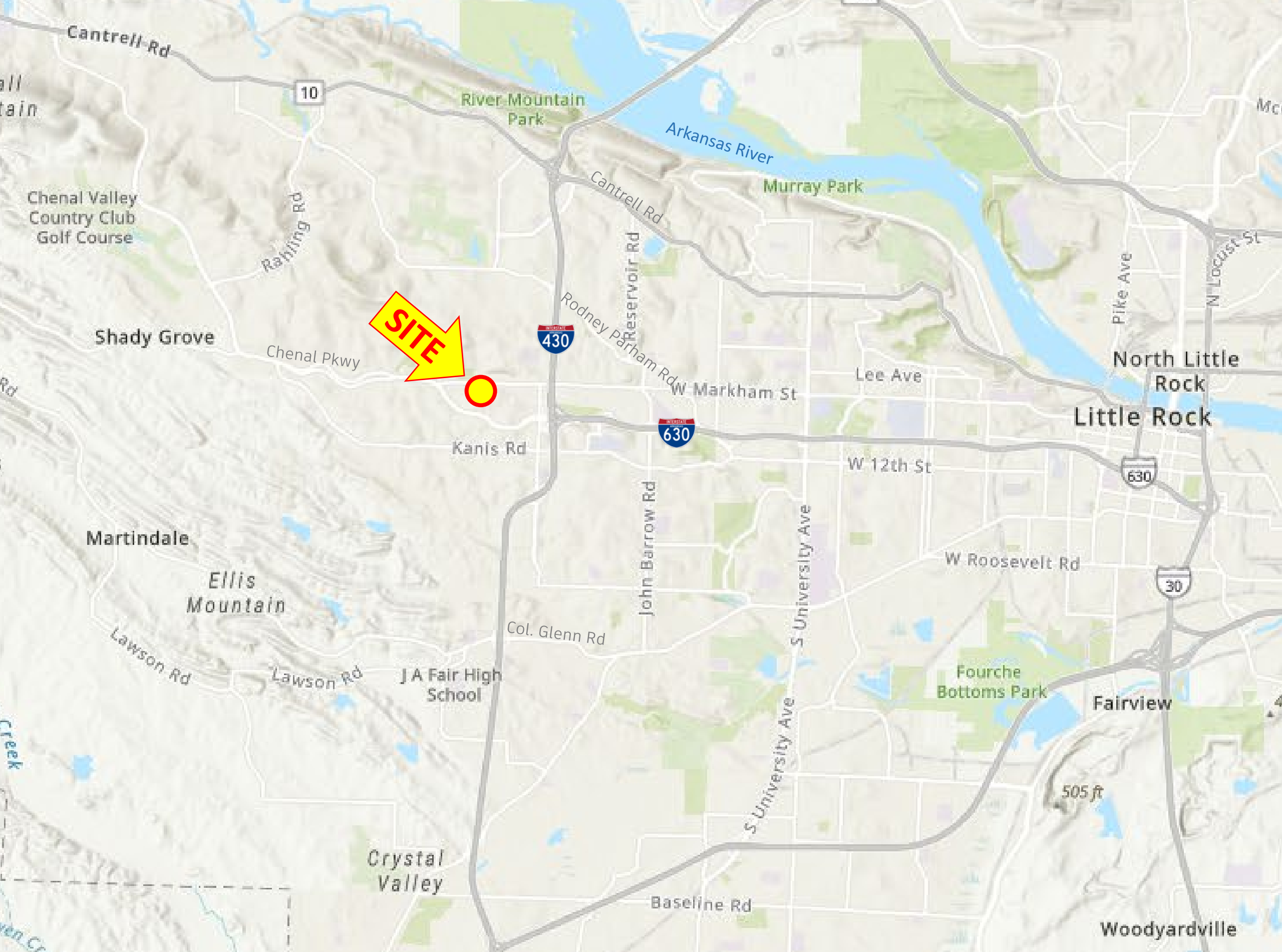
Rock Creek



WEST MARKHAM STREET







SITE



Kanis Rd

North Little Rock
Little Rock

505 ft

AREA RETAIL & KEY USE AERIAL



NEIGHBORHOOD KEY USE AERIAL



NEIGHBORHOOD KEY USE AERIAL

27,000 ADT

SITE

Building has been removed

Signal Access

Self Serve Car Wash

GOODYEAR

Shops

Auto Mall

Shops

Gas Mart

W. Markham St

Rock Creek

Rock Creek

Markham Park Dr

Bowman Rd

9
goodwill

Cleaners

OUTBACK
STEAKHOUSE

Academy
SPORTS & OUTDOORS

Office
DEPOT

DOLLAR
TREE

Michaels
Where Creativity Happens

planet
fitness

W

SHERWIN
WILLIAMS

DONNIE'S
PROPERTY CAR SERVICE

Shops

KFC

McDonald's

SEVEN BREW
THRU COFFEE

HEARTLAND
DENTAL

Aspen
Dental

FAZOLI'S

MEXICO
Chiquito

Baptist Health
Urgent Care

RNR
TIRE EXPRESS

Colonial
Wines &
Sprits

THE ROCK
Medical Center

POPEYE'S

Shops