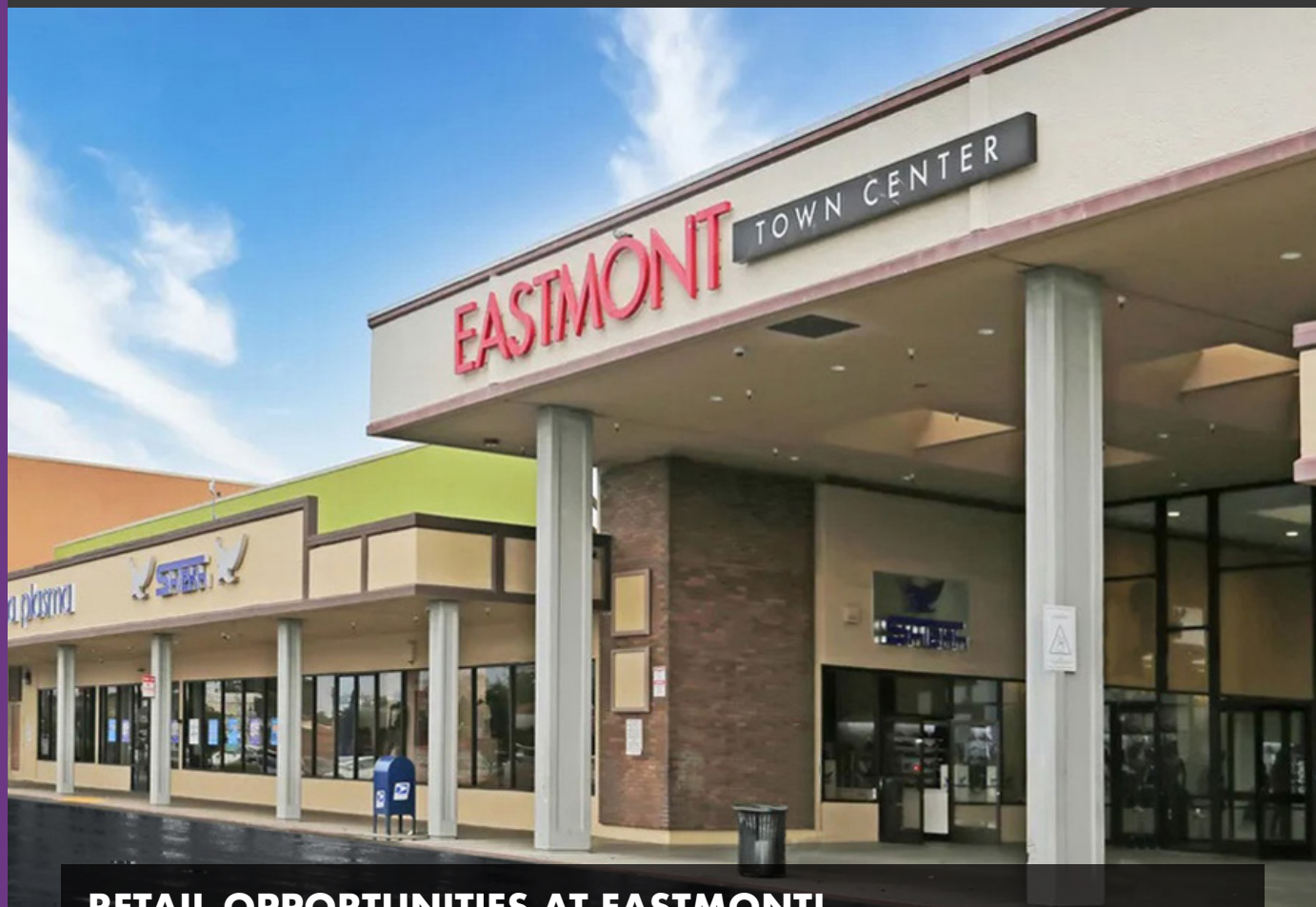




EASTMONT TOWN CENTER

7200 BANCROFT AVENUE OAKLAND CA



RETAIL OPPORTUNITIES AT EASTMONT!

Prime retail is available at this renowned shopping center and social services hub, serving the communities of East Oakland and San Leandro.

Join anchor tenants CVS, Taco Bell, Auto Zone, Burger King and Gazzali's Supermarket!

Starbucks Opening New Drive-Thru in 2026!

The Eastmont Town Center has taken on new life over the past decade and is now thriving in two capacities - one as a bustling retail center and the other as a hub for community services. Together this makes for a very active center between customers and clients shopping, dining and partaking in health and wellness visits.

THE NUMBERS

33 ACRES

Eastmont Town Center is bounded by Foothill Boulevard, Bancroft Avenue, 73rd Avenue, and Church Street, in the Frick neighborhood of East Oakland

18,000 VEHICLES

Travel past Eastmont Town Center daily

12 TRANSIT LINES

AC Transit Center located on site with several lines intersection with the Center

1,000+ EMPLOYEES

Estimated Staff working at the Health & Wellness Services Hub

419,000+ RESIDENTS

Within 5 Miles

94,000 HOUSEHOLDS

With Children

147,000 HOUSEHOLDS

FEATURES

PARKING:

The Center offers plentiful free parking while shopping - over 500 spaces!

TRANSIT SERVICES:

Eastmont Transit Center offers a major bus interchange location here with various lines serving the community, including direct access to BART

OAKLAND PUBLIC LIBRARY BRANCH:

One of 16 branches in the system, opened in 1998

LIBERATION PARK:

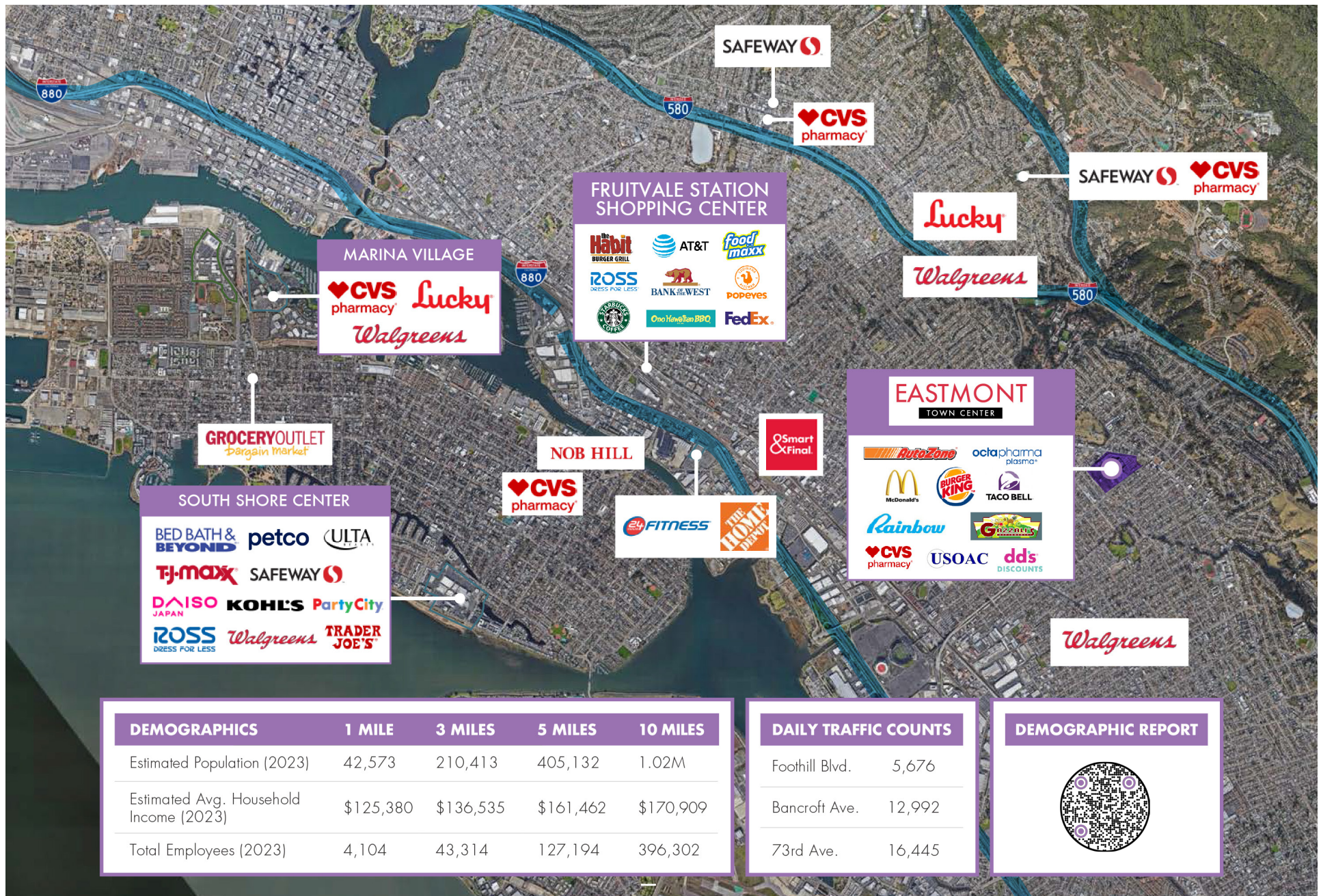
Currently a small community park, this will soon become a Cultural Center with an adjoining six-story affordable housing complex, a food hall, performance space and Farmers Market.

TRAFFIC COUNTS:

Foothill Boulevard - 5,676 Daily

Bancroft Avenue - 12,992 Daily

73rd Avenue - 16,445 Daily





PROPERTY HIGHLIGHTS

- Surface parked, high volume grocery /CVS anchored regional shopping center
- Prime 5,285 SF in-line available
- Rare 12,521 SF Anchor Position available
- Maximum freeway exposure
- Easy freeway access



CHROMATA
RETAIL

Jamie Flaherty-Evans

510.334.8606

jamie@chromataRE.com

DRE Lic #01432663



Solomon Ets-Hokin

510.427.0096

sol@ehcre.com

DRE Lic #01248264

chromataRE.com