



Office For Sublease

Lease Rate

**\$19.50 psf**

Full Service

**Contact:**

**James Bullington**

Executive Vice President

+1 801 836 2400

james.bullington@colliers.com

**Colliers**

2100 Pleasant Grove Blvd., Suite 200

Pleasant Grove, UT 84062

Main: +1 801 947 8300

colliers.com

1365 W Business Park Drive  
Ste 101, Orem, Utah

**Building Amenities**

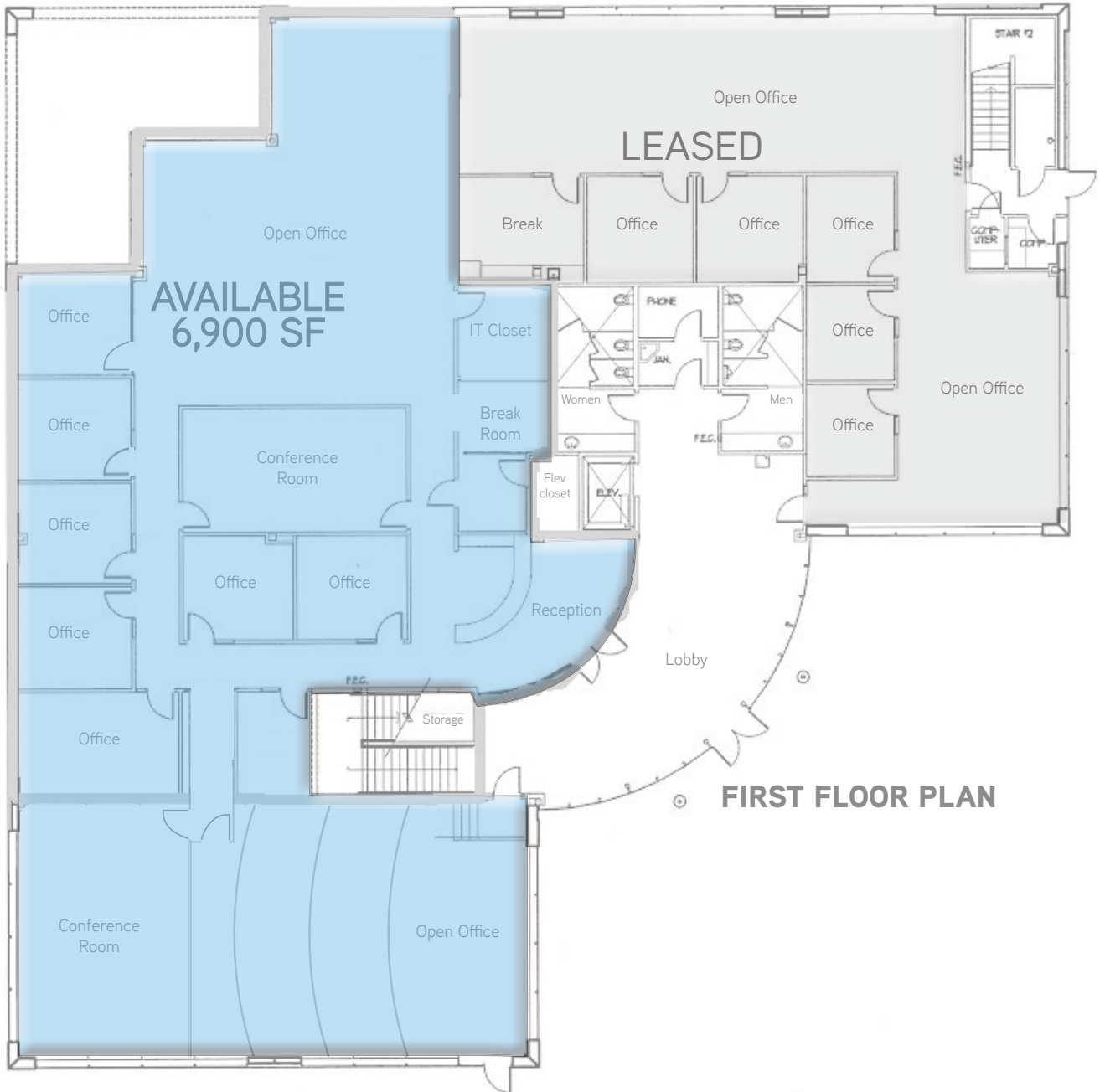
- Master lease expires: March 31, 2026
- Layout consists of seven (7) hard wall offices, two (2) conference rooms, break room, reception area, and two (2) open office areas
- One of the open office areas has been used as a training room with a multi-tiered floor and multiple tv screens at the front of the room.
- Located within walking distance to Utah Valley University
- Immediate Freeway access off the University Parkway I-15 interchange in Orem

**Available: 6,900 SF**

**Lease Rate: \$19.50 psf | Full Service**

# Floor Plans

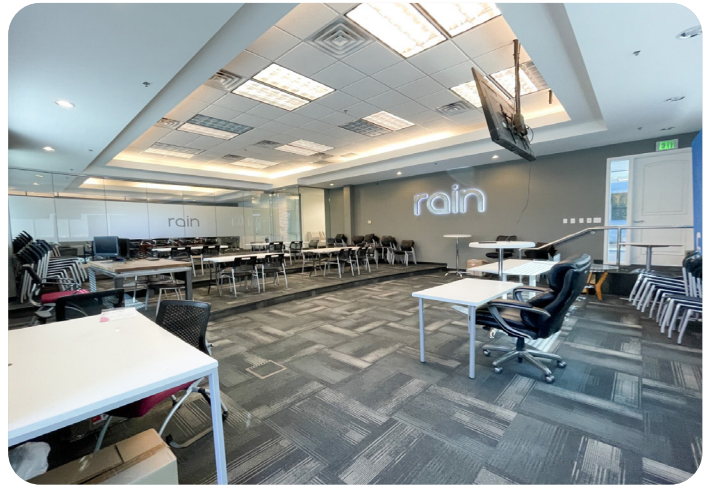
**Total SF: 6,900 SF**



**FIRST FLOOR PLAN**



# Pictures







**Colliers**  
 2100 Pleasant Grove Blvd., Suite 200  
 Pleasant Grove, UT 84062  
 Main: +1 801 947 8300  
 colliers.com

**James Bullington**  
 Executive Vice President  
 +1 801 836 2400  
 james.bullington@colliers.com

This document has been prepared by Colliers International for advertising and general information only. Colliers International makes no guarantees, representations or warranties of any kind, expressed or implied, regarding the information including, but not limited to, warranties of content, accuracy and reliability. Any interested party should undertake their own inquiries as to the accuracy of the information. Colliers International excludes unequivocally all inferred or implied terms, conditions and warranties arising out of this document and excludes all liability for loss and damages arising there from. This publication is the copyrighted property of Colliers International and/or its licensor(s). ©2024. All rights reserved.