

# Meridian Business Campus

3040 Universal Boulevard, Weston, FL 33331



## Weston Road Exposure



*Signage Available*

### For More Information:

Timothy J. Talbot  
Andrew Ackerman  
O (954) 385-0000

[www.comrealfortlauderdale.com](http://www.comrealfortlauderdale.com)



# Meridian Business Campus

3040 Universal Boulevard, Weston, FL 33331



## Building Features

- Freestanding Office Building on Lake
- Newly Renovated Lobby & Common Area
- 10 Ft. Ceilings
- Can Be Sub-Divided
- Weston Road Exposure
- Full Service On-Site Management
- Parking Ratio 4.5/1,000
- Close Proximity to Shopping, Restaurants, Banking Establishments, & The Fort Lauderdale-Hollywood Intl. Airport
- Minutes to I-75, South of I-595, & the Sawgrass Expressway

***Location! Location! Location!***

Weston Road Exposure  
Cleveland Clinic  
Minutes to Weston Town Center  
Fine Dining & Shopping  
Weston Hills Country Club  
Starbucks, Publix, Banking  
Walgreens Pharmacy  
& Many More!

[www.comrealfortlauderdale.com](http://www.comrealfortlauderdale.com)



# Meridian Business Campus

3040 Universal Boulevard, Weston, FL 33331

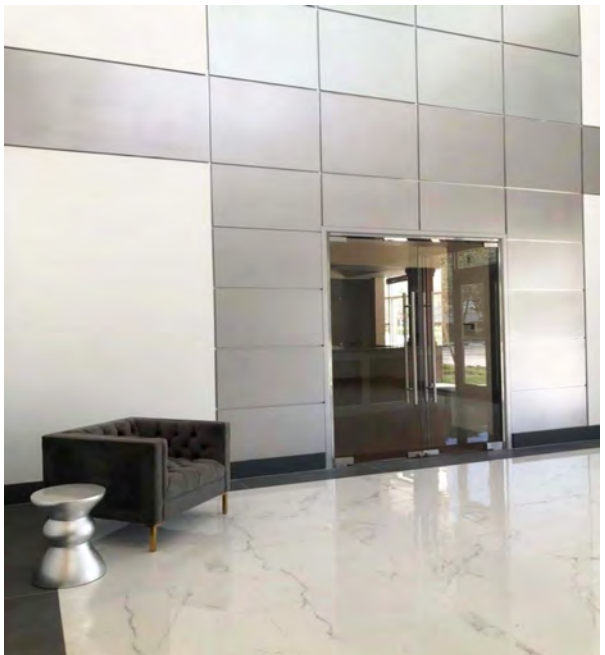


# Meridian Business Campus

3040 Universal Boulevard, Weston, FL 33331



**Lobby/Common Area Renovations Completed**



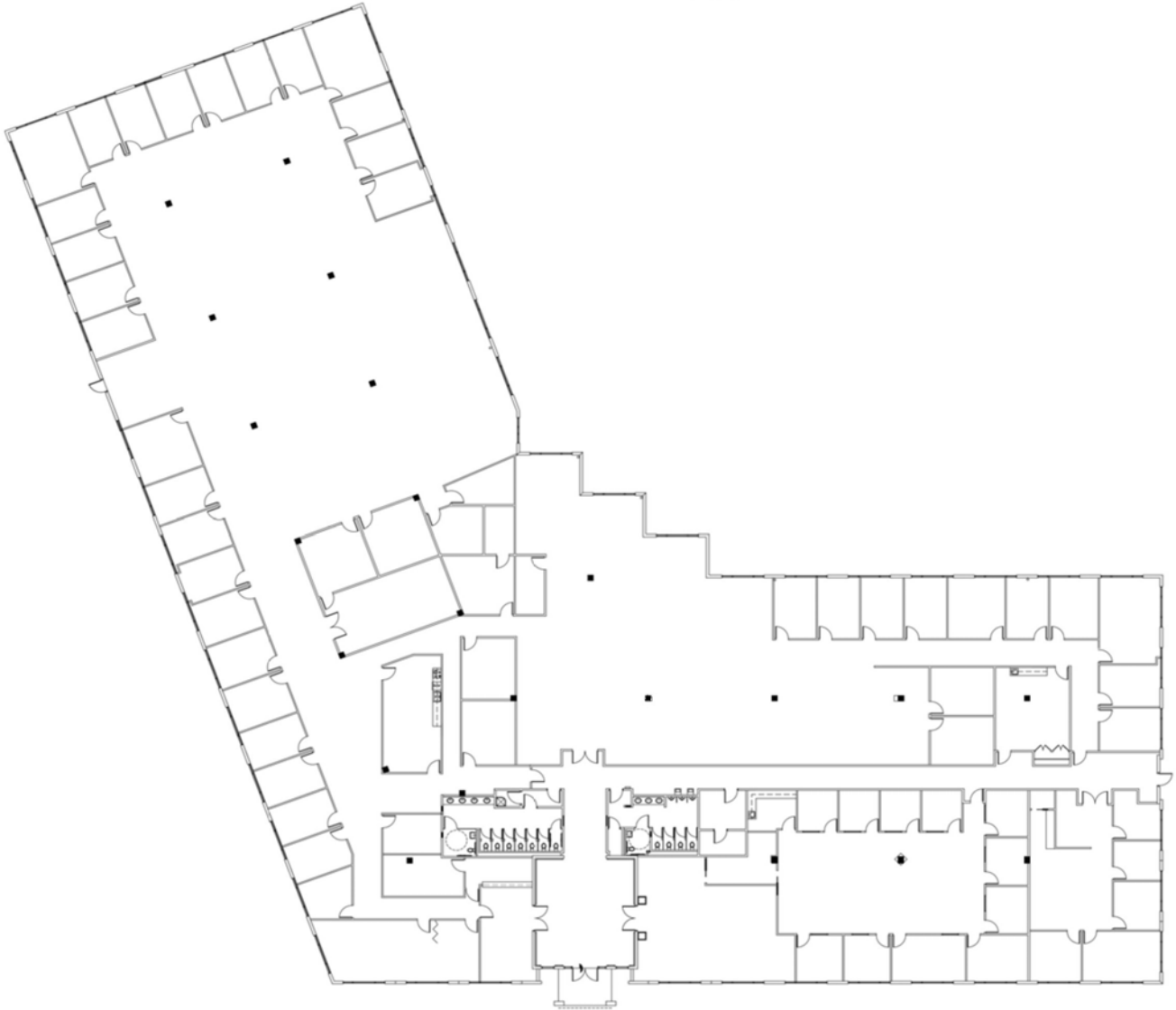
**MERIDIAN**  
BUSINESS CAMPUS AT WESTON

**For More Information:**  
Timothy J. Talbot  
Andrew Ackerman  
O (954) 385-0000



# Meridian Business Campus

3040 Universal Boulevard, Weston, FL 33331



**Suite 100 - 34,153 SF**

FOR LEASING INFORMATION:

Timothy J. Talbot | [ttalbot@comreal.com](mailto:ttalbot@comreal.com)

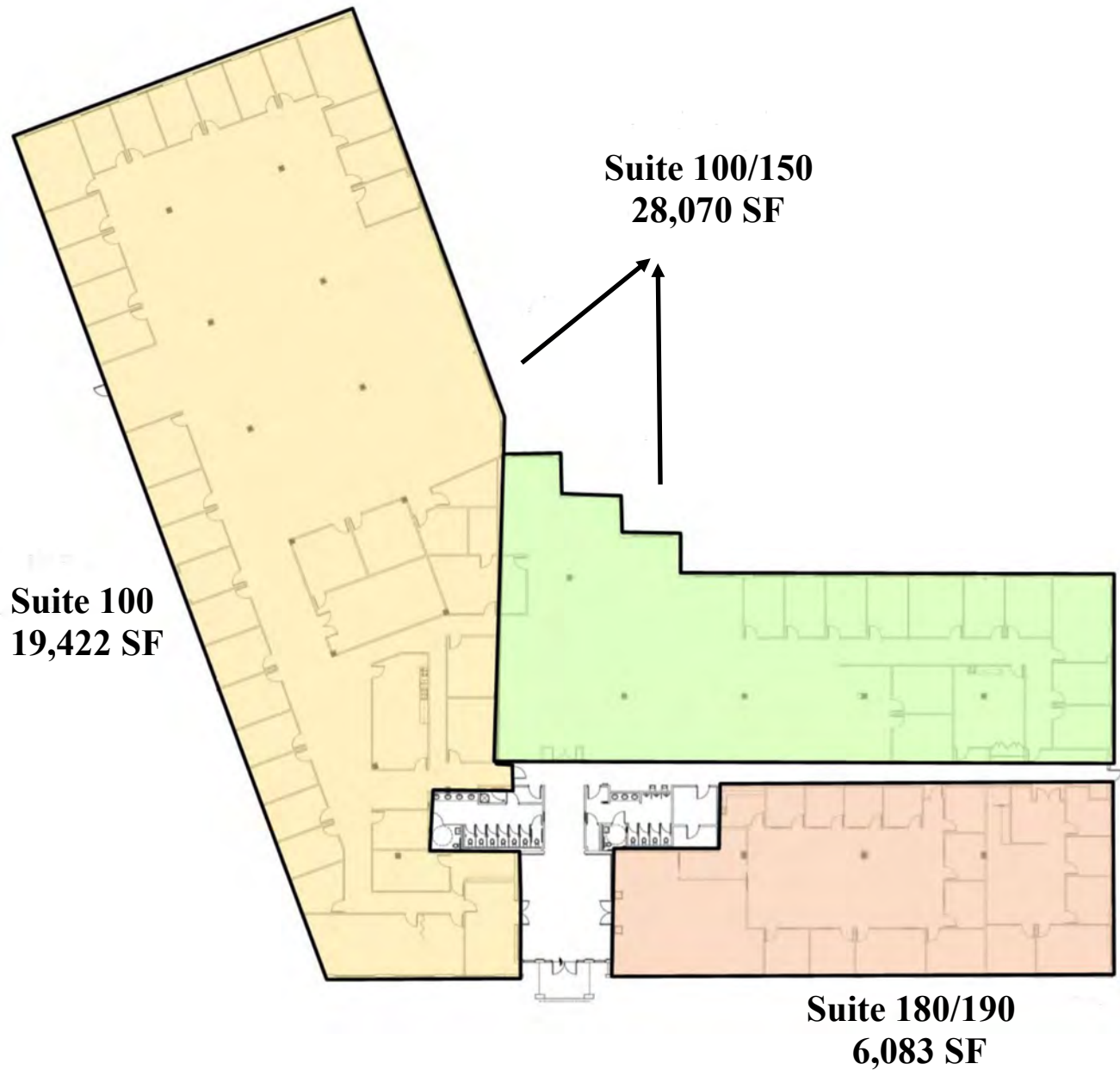
Andrew Ackerman | [aackerman@comreal.com](mailto:aackerman@comreal.com)

**954.385.0000**



# Meridian Business Campus

3040 Universal Boulevard, Weston, FL 33331



**Suite 100 - 34,153 SF**

FOR LEASING INFORMATION:

Timothy J. Talbot | [ttalbot@comreal.com](mailto:ttalbot@comreal.com)

Andrew Ackerman | [aackerman@comreal.com](mailto:aackerman@comreal.com)

**954.385.0000**

