

**3910 LORAIN AVE  
CLEVELAND, OH 44113  
FOR LEASE!!**



**LOCATED IN THE HEART OF OHIO CITY!!**

**5,200 Sq Ft Retail Level  
5,000 Sq Ft Lower Level**



- 5,200 Sq Ft Retail Level
- 5,000 Sq Ft Lower Level (with Direct Access)
- 1st Floor Rent: \$15.00 PSF
- High Ceilings | Large Windows | Hardwood Flooring
- FIVE-Car Parking in Rear
- HIGH Traffic Count!

**COAKLEY**  
Real Estate Company LLC



**FOR SHOWING INFORMATION**

**Francis (Sandy) Coakley, Principal**

M: 216-970-0644 | O: 216-772-4700

sandy@coakleyrealestate.net

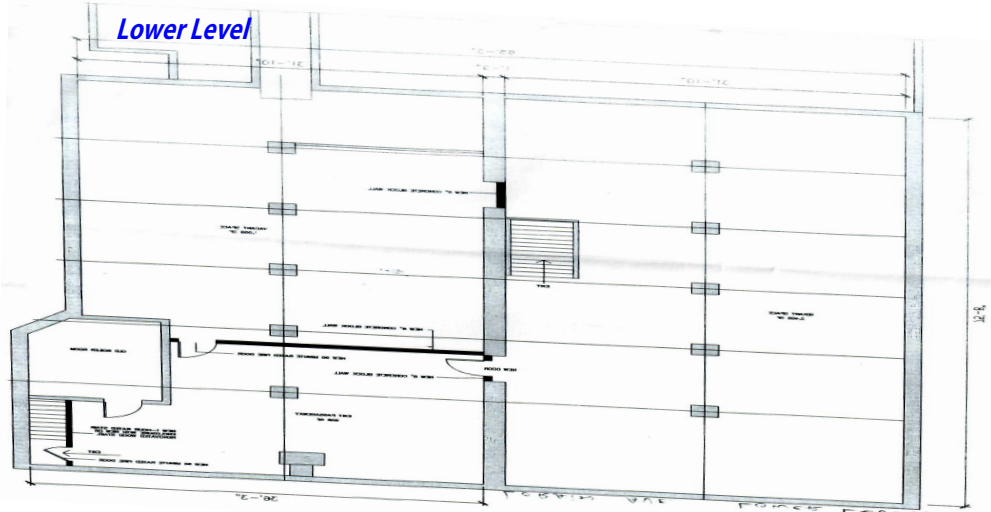


[www.coakleyrealestate.net](http://www.coakleyrealestate.net)

1382 W. Ninth Street #225 | Cleveland, Ohio 44113



A wide-angle photograph of a vintage furniture store's interior. The space features a high, textured, white-painted ceiling with exposed wooden beams and a floor made of wide, dark-stained wooden planks. In the foreground, a large, ornate wicker chair with a high, curved back and a white cushion sits on the left. To its right is a small, round, dark wooden table with a glass top. Further back, another similar wicker chair is visible. On the right side, a large window is partially covered by a vibrant rainbow flag hanging vertically. Below the window, a low, dark wooden coffee table holds a large, dark, textured ceramic vase and some small decorative items. The background is filled with various other vintage furniture pieces, including tables, chairs, and a display case, all arranged in a way that showcases the store's inventory. The lighting is warm and ambient, highlighting the textures of the wood and the intricate details of the furniture.

[illegible]

sandy@coakleyrealestate.net

