



CUSHMAN &
WAKEFIELD

FOR LEASE

550 EAST SOUTH TEMPLE
SALT LAKE CITY, UT

NEVER-BEFORE OFFERED SOUTH TEMPLE OFFICE SPACE

FULL EAST BUILDING UP TO
±63,790 RSF AVAILABLE

MINIMUM TWO FLOOR LEASE REQUIRED

\$21.00/RSF, Full-Service

Contact

Mike Richmond

Executive Managing Director
+1 801 303 5434
mike.richmond@cushwake.com

Dana Baird, CCIM

Executive Managing Director
+1 801 303 5526
dana.baird@cushwake.com

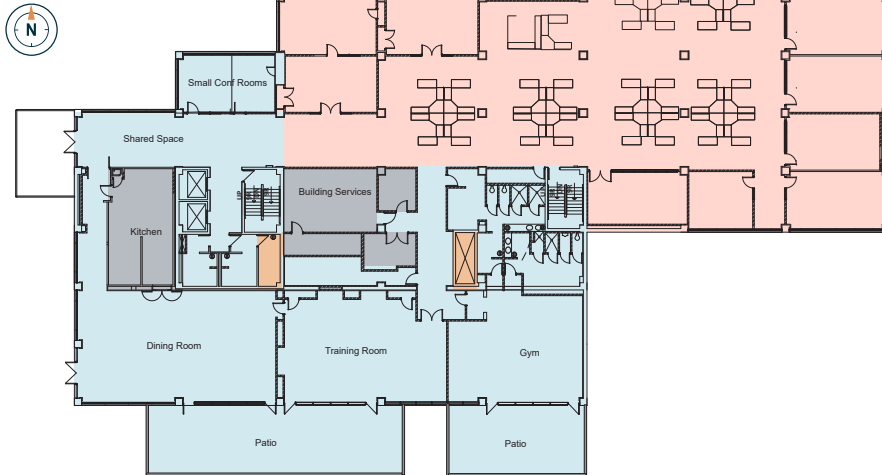


FOR LEASE

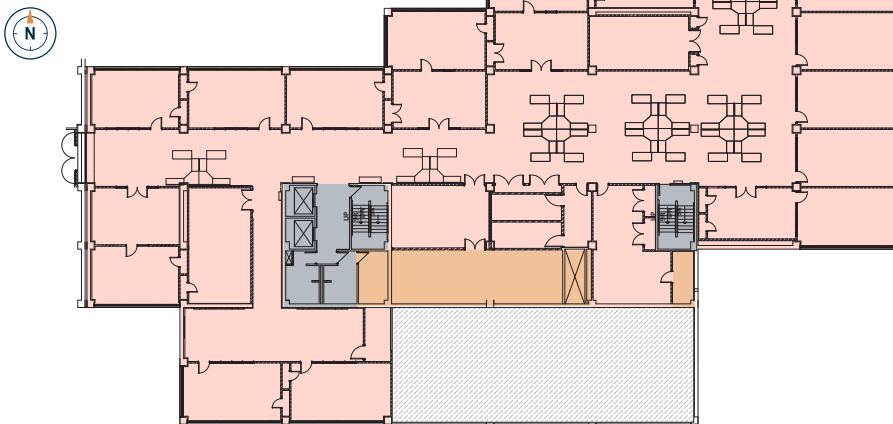
550 EAST SOUTH TEMPLE
SALT LAKE CITY, UT

PRESTIGIOUS SOUTH TEMPLE LOCATION NEARLY 65,000 RSF AVAILABLE

FIRST FLOOR EAST 16,577 RSF



SECOND FLOOR EAST 21,452 RSF



Key Features:

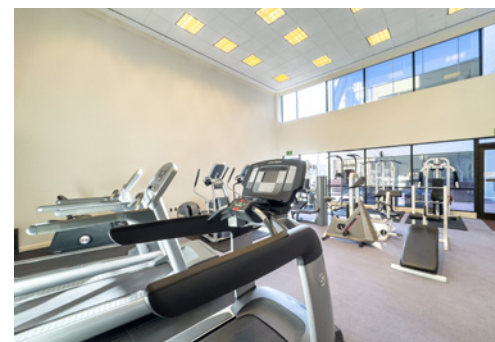
- Outdoor patios and balconies
- Covered/structured parking
- Shared fitness facility with lockers and showers
- Shared conference rooms and training spaces
- On-site dining/cafeteria
- Secured building access with camera monitoring
- Furniture available



LANDSCAPED GROUNDS



PRIVATE OFFICE



FITNESS CENTER



UNDERGROUND PARKING



SHARED CONFERENCE ROOM



SHARED BUILDING LOBBY



LOCKER ROOMS WITH SHOWERS

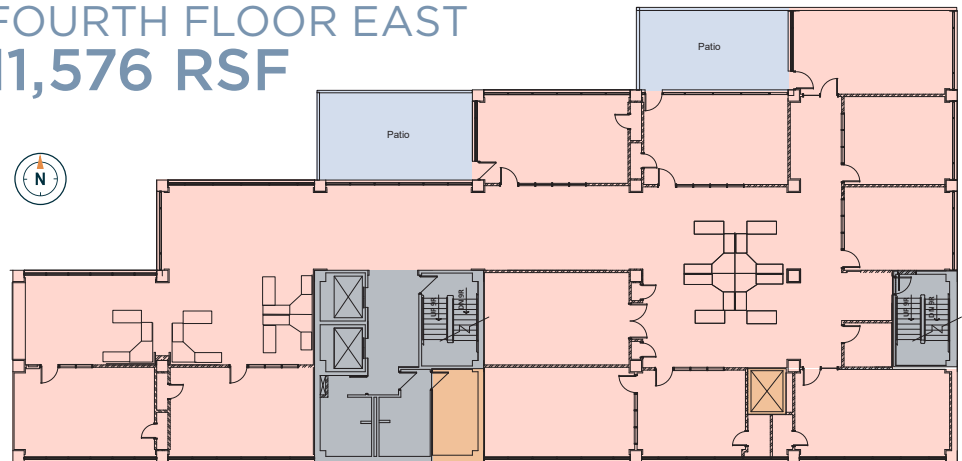


ON-SITE DINING/CAFETERIA


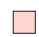
THIRD FLOOR EAST 14,185 RSF



FOURTH FLOOR EAST 11,576 RSF



LEGEND

-  Shared Tenant Amenities
-  Leaseable Tenant Space
-  Electrical/Mechanical Space
-  Building Services
-  Tenant Balconies

CONTACT

Mike Richmond

Executive Managing Director
+1 801 303 5434
mike.richmond@cushwake.com

Dana Baird, ccim

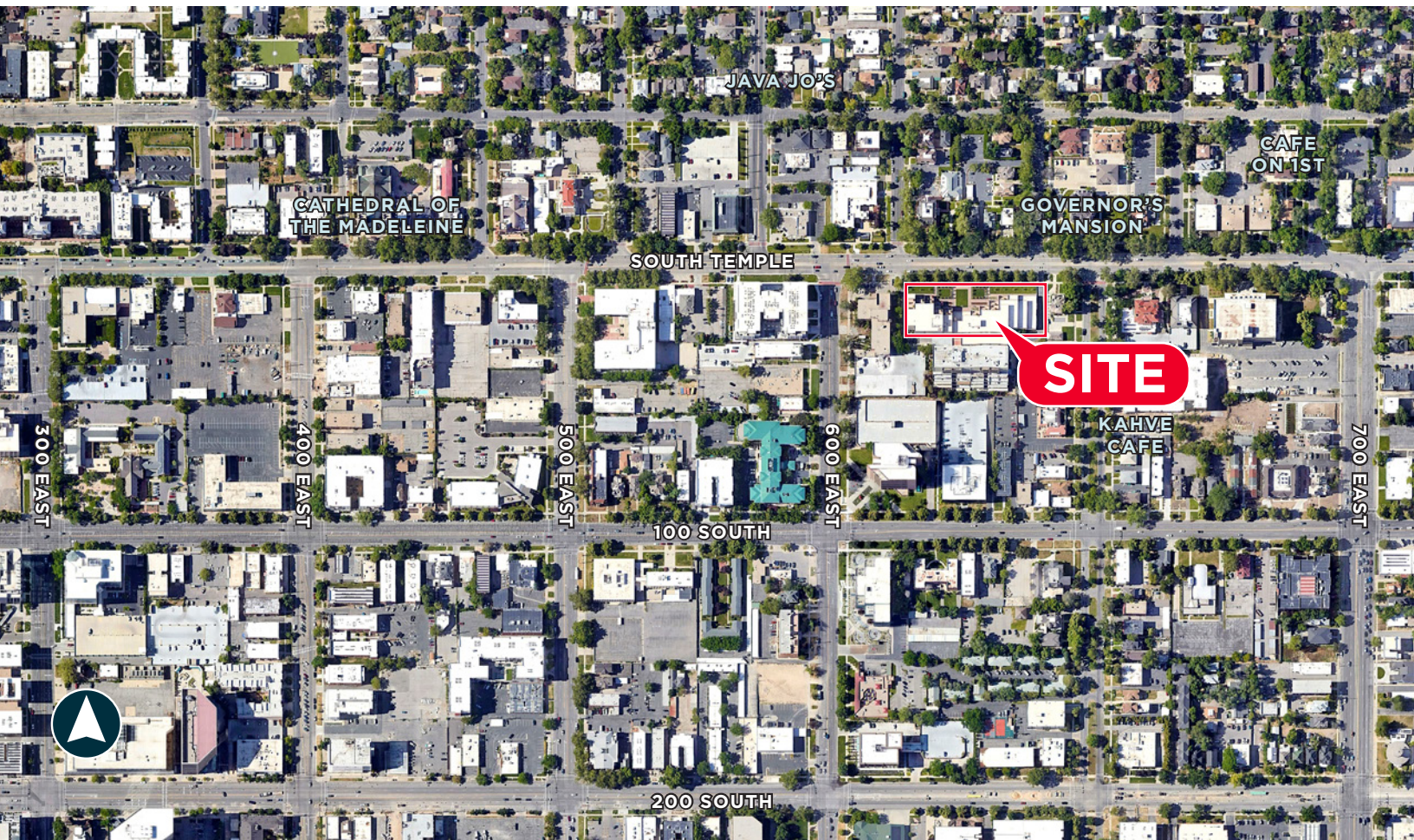
Executive Managing Director
+1 801 303 5526
dana.baird@cushwake.com

FOR LEASE

550 EAST SOUTH TEMPLE
SALT LAKE CITY, UT



CUSHMAN &
WAKEFIELD



Contact

Mike Richmond

Executive Managing Director
+1 801 303 5434
mike.richmond@cushwake.com

Dana Baird, ccim

Executive Managing Director
+1 801 303 5526
dana.baird@cushwake.com

170 South Main Street
Suite 1600
Salt Lake City, UT 84101
+1 801 322 2000
cushmanwakefield.com

Cushman & Wakefield Copyright 2019. No warranty or representation, express or implied, is made to the accuracy or completeness of the information contained herein, and same is submitted subject to errors, omissions, change of price, rental or other conditions, withdrawal without notice, and to any special listing conditions imposed by the property owner(s). As applicable, we make no representation as to the condition of the property (or properties) in question.
(path: G:\UT\SL1\Shared\Apps\Gigas\1 - Projects\Richmond, Mike\1 - Flyers\550EastSouthTemple)