

682 W. Boughton Road
Bolingbrook, Illinois



Christine Simek

630.473.5070

christine@xroadsadvisors.com

Introduction



Bolingbrook is a village located in both Will and DuPage counties. The property is located in the South Suburban submarket. This building is situated within close proximity to I-55, I-88, I-355 and Route 53. This property is located among many well known company headquarters that draw customers and clients to the surrounding area.

Building Features

- Suites Available
 - Suite B : 1,477 SF
 - Suite D: 1,117 SF
- Suite B features 4 private offices, a large open office area with reception desk, 2 private washrooms, and a kitchenette within the suite
- Suite D features 3 private offices, a private washroom, large open office/waiting area/reception
- Both units are separately metered for natural gas and electric
- Separate HVAC systems for each unit
- This property boasts private entrances for each space, ensuring a seamless transition into your new workspace
- With ample parking for both tenants and visitors, accessibility is never a concern
- The park-like setting off of Boughton Road creates a serene and welcoming environment for employees and clients alike
- Monument signage opportunities are available, providing prime visibility for your business

Exterior Photos



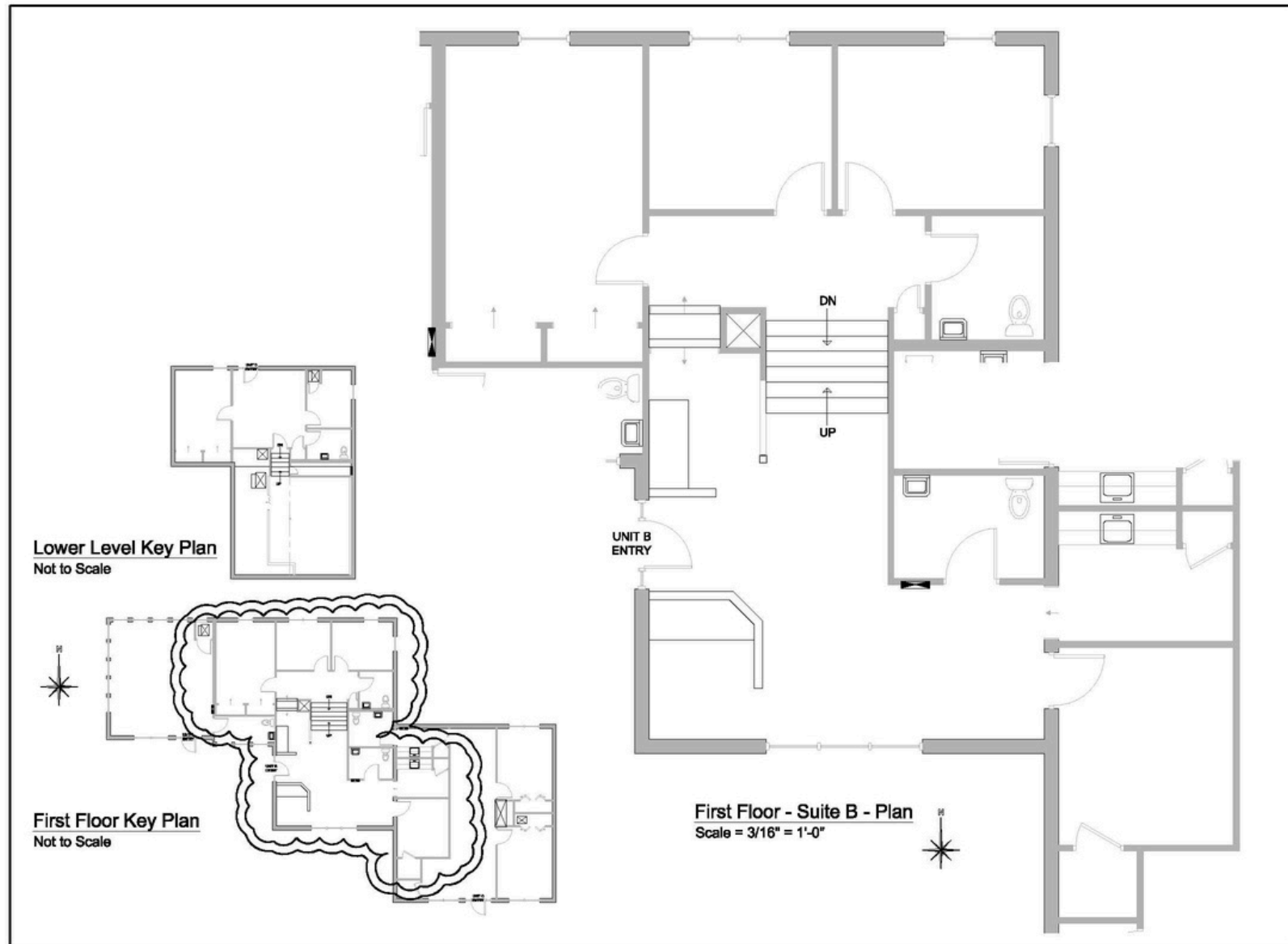
Interior Photos: Suite B



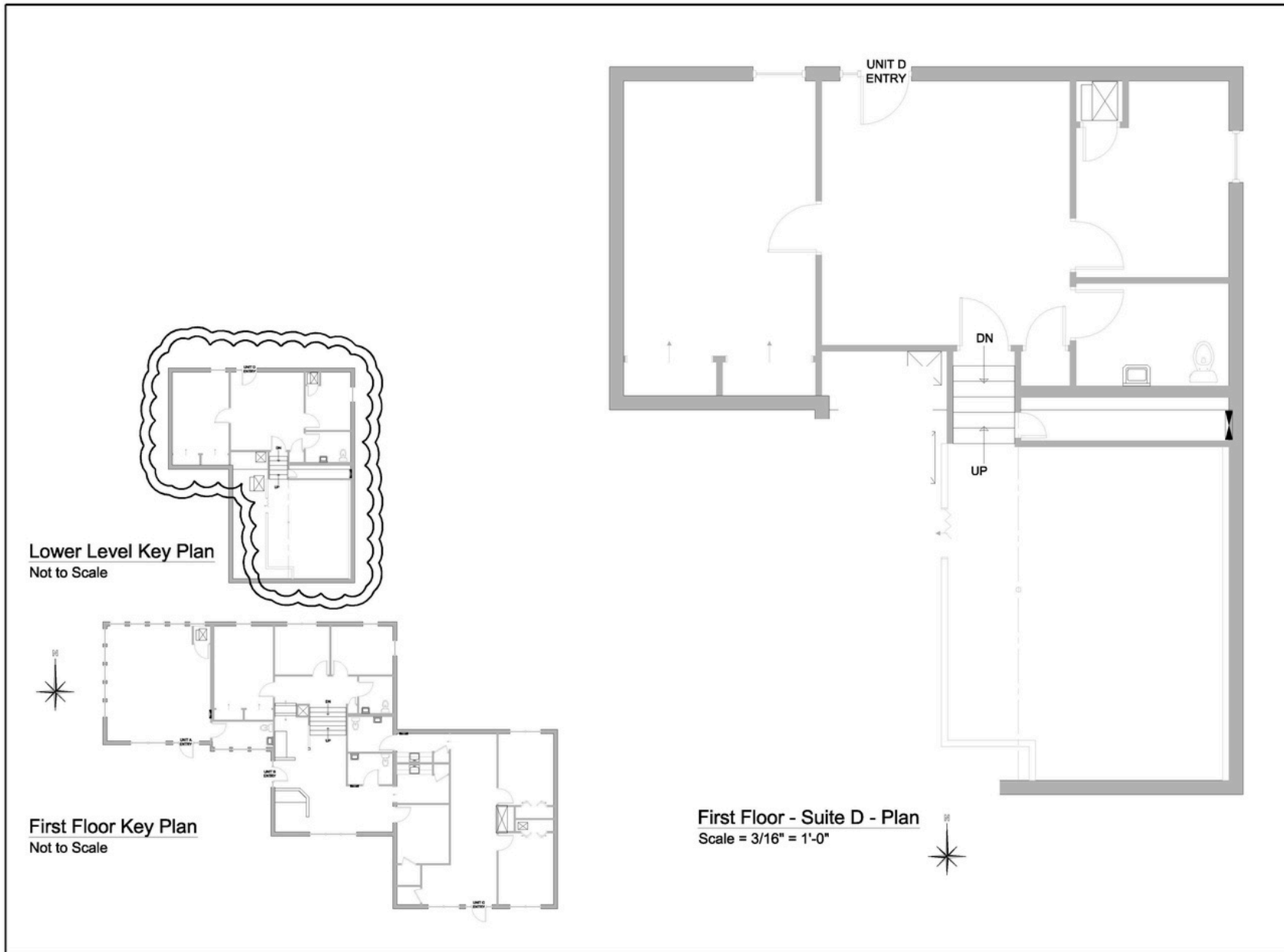
Interior Photos: Suite D



Floor Plan: Suite B



Floor Plan: Suite D



Location



Located near
Rte 53, I-55,
I-88 & I-355

682 W. Boughton Road
Bolingbrook, Illinois



Christine Simek
630.473.5070

christine@xroadsadvisors.com