

LAND FOR SALE

3985 WEST 400 NORTH
MICHIGAN CITY, IN 46360



PROPERTY FEATURES

- Land Offered at \$45,000
- 3.89 Acres | Located on Corner Lot with Signalized Intersection
- Less Than a 5 Minute Drive to Franciscan Health Hospital
- Close to I-94 & US-20
- Municipal Utilities Available
- Located In a Developing Retail/Service Corridor
- Easy Access to Downtown Michigan City via US-421 & Other Major Metropolitan Areas
- Hotels, Restaurants, Outlet Mall & Other National Retailers Nearby



CONTACT US

219-764-3104

Michael C. O'Connor, SVP - Leasing & Development
moconnor@holladayproperties.com

6370 Ameriplex Drive, Suite 110 Portage, IN 46368
holladayproperties.com

PARCEL DIMENSIONS

LAND | MICHIGAN CITY, IN

3.89 Acres



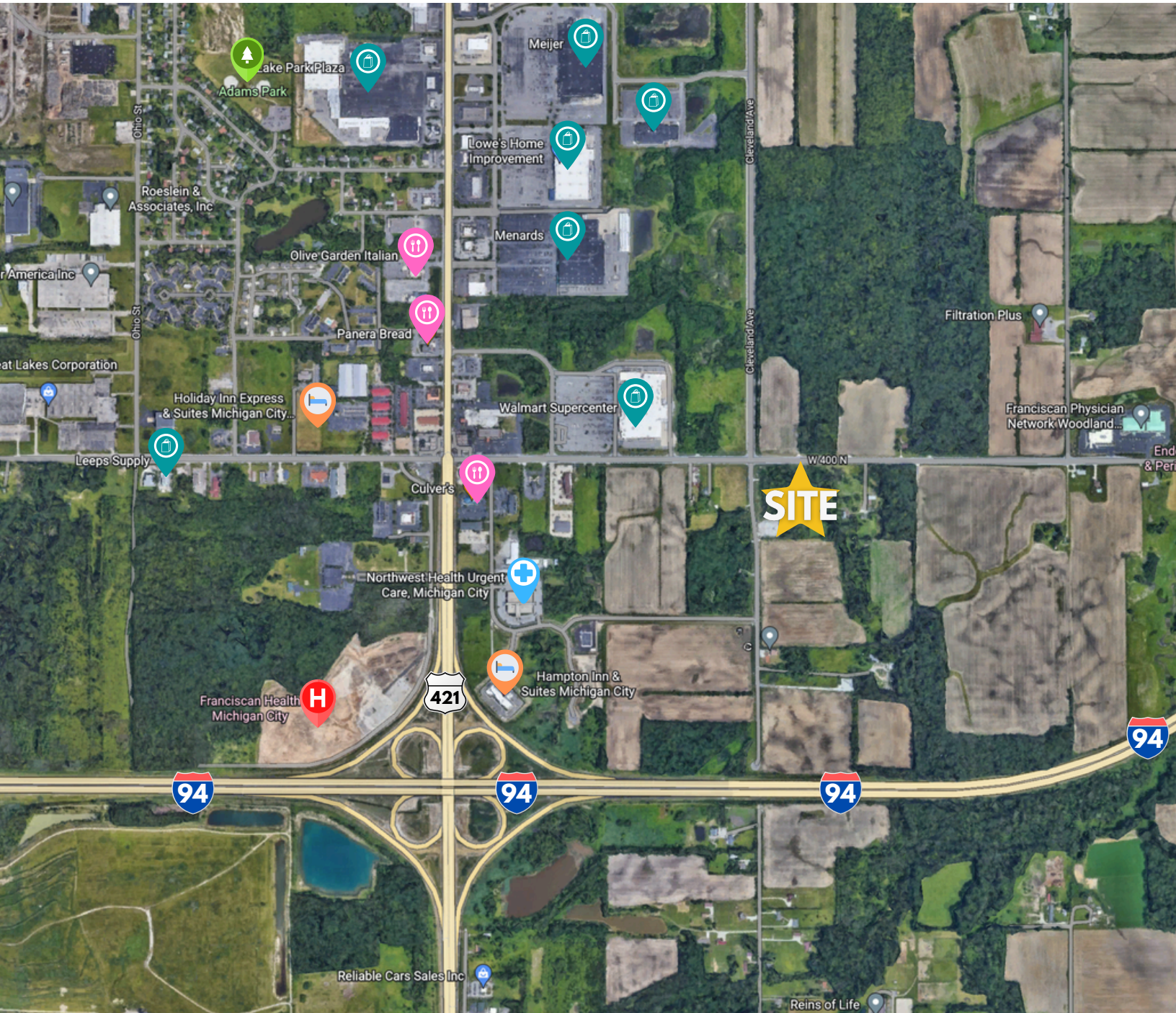
CONTACT US TODAY!
219-764-3104

Michael C. O'Connor, SVP - Leasing & Development
moconnor@holladayproperties.com

6370 Ameriplex Drive, Suite 110 Portage, IN 46368
holladayproperties.com

LOT LOCATION

SOUTHWEST CORNER OF
W 400 N & N 950 W



CONTACT US TODAY!
219-764-3104

Michael C. O'Connor, SVP - Leasing & Development
moconnor@holladayproperties.com

6370 Ameriplex Drive, Suite 110 Portage, IN 46368
holladayproperties.com