

# 3rd floor



TOTAL GROSS SF 3RD FLR  
 (EXCLUDES CORE) 6,530 SF  
 USABLE AREA 3RD FLR  
 (EXCLUDES CORE, STAIRS, ELEVATOR, ELEVATOR SHAFTS, ELEVATOR MECH. ROOMS) 4,143 SF

RENTABLE AREA 3RD FLR (GROSS MINUS VERTICAL PENETRATIONS, STAIRS, ELEV., W/C CHASE)	5,753 SF
STAIRS + ELEVATOR	525 SF
TOTAL AREA (INTERIOR WALLS)	6,278 SF

THIRD FLOOR TENANT RENTABLE AREA <small>NOTE: RENTABLE AREA IS NET EXCLUDE VERTICAL PENETRATIONS, STAIRS, ELEV.</small>	
SWR/R RENTABLE AREA	5,708 SF
MECH ROOM AREA	45 SF
RENTABLE AREA 3RD FLR <small>(GROSS MINUS VERTICAL PENETRATIONS, STAIRS, ELEV., W/C CHASE)</small>	5,753 SF

TOTAL GROSS SF ALL 3 FLOORS	12,008 SF
RENTABLE AREA ALL 3 FLOORS (GROSS MINUS VERTICAL PENETRATIONS, STAIRS, ELEVATOR, ELEVATOR SHAFTS, ELEVATOR MECH. ROOMS)	7,725 SF
STAIRS + ELEVATOR	525 SF
TOTAL AREA (INTERIOR WALLS) ALL 3 FLOORS	11,890 SF

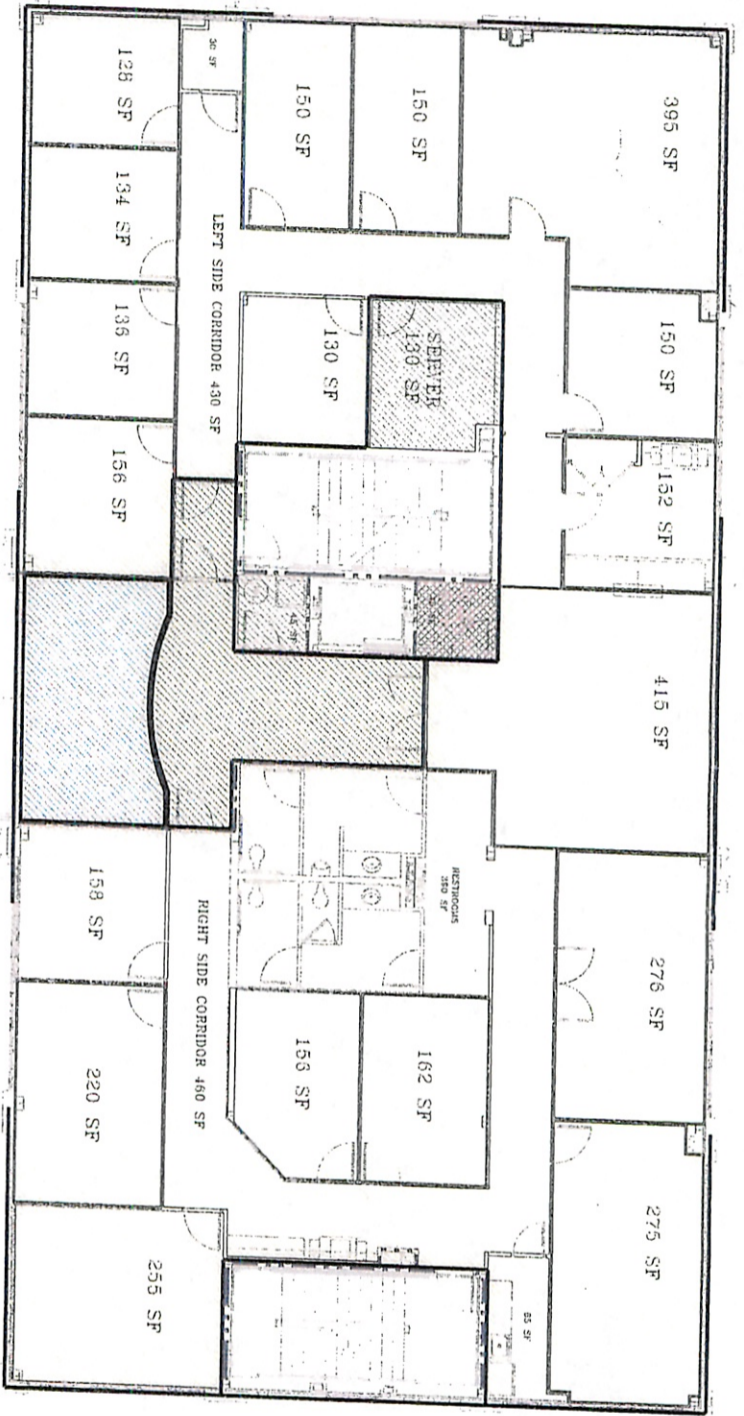
General Notes

No.	Include/Exclude	Date
1	INCLUDE PARTIAL WALLS	

www.telcoinc-all.com

Project Name and Address  
 www.w.w. llc  
 280 COUNTRY CLUB DR  
 STOCKBRIDGE, CA  
 TENANT FLOOR PLAN

Project	THIRD FLOOR	Sheet	FP-3
Date	4-11-14		
Scale	3/16" = 1'		



# 2nd floor



TOTAL GROSS SF 2ND FLR 6320 SF  
 (INCLUDES MECH. ROOM)  
 USABLE AREA 2ND FLR 5320 SF  
 (INCLUDES MECH. ROOM)  
 MECH. ROOM 43 SF  
 ELECTRICAL RM. 114 SF  
 SEWER 130 SF

RENTABLE AREA 2ND FLR (GROSS AREA) 6320 SF	5320 SF
STAIRS + ELEVATOR	525 SF
TOTAL AREA (INTERIOR WALLS)	6,270 SF

## SECOND FLOOR TENANT RENTABLE AREA

TENANT	RENTABLE AREA (GROSS)	RENTABLE AREA (NET)
WWW. LLC - COMMON AREAS	175 SF	175 SF
MECH ROOM	43 SF	43 SF
WWW. LLC	330 SF	330 SF
ATHLETIC	230 SF	230 SF
HOTEL AG	4,980 SF	4,980 SF
RENTABLE AREA 2ND FLR (GROSS AREA)	5,753 SF	5,753 SF

TOTAL GROSS SF ALL 3 FLS 18,500 SF	18,500 SF
RENTABLE AREA ALL 3 FLS 15,200 SF	15,200 SF
STAIRS + ELEVATOR 1,200 SF	1,200 SF
TOTAL AREA (INTERIOR WALLS) 17,000 SF	17,000 SF

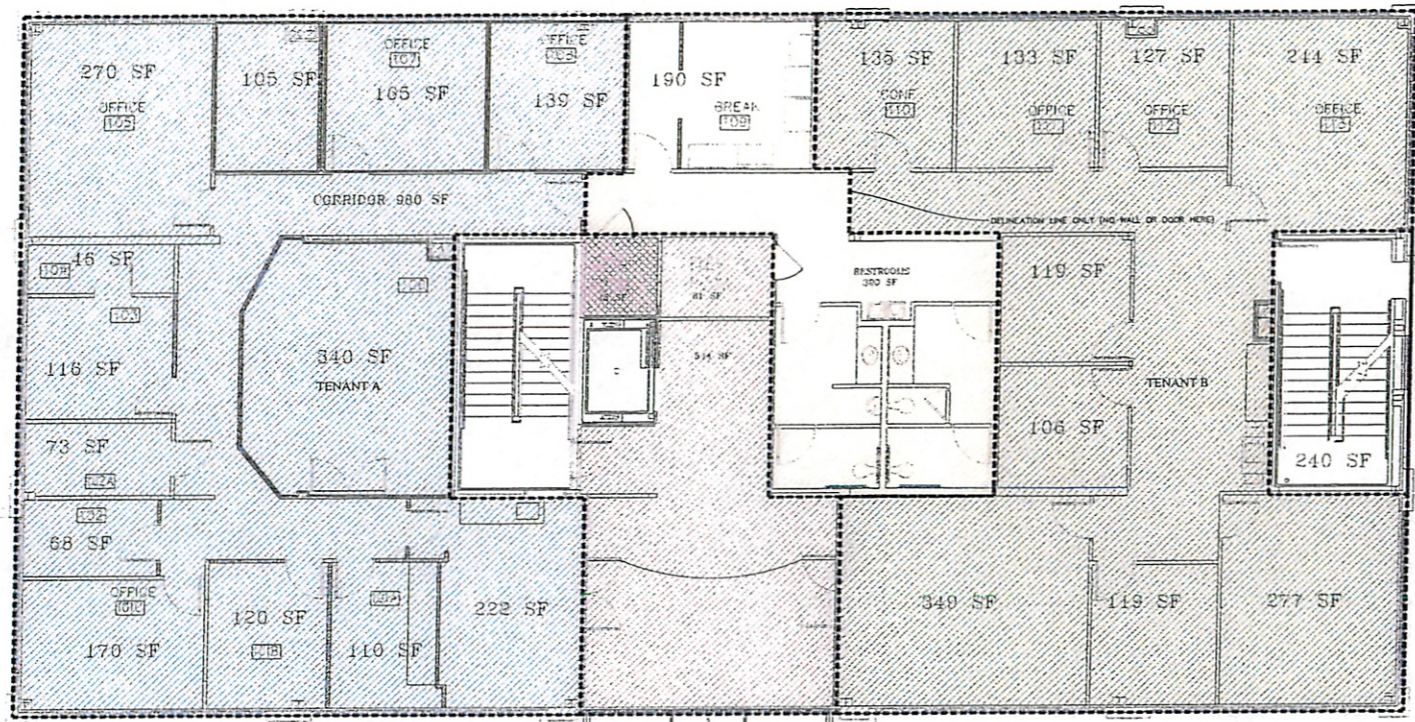
General Notes

No.	Revision/Issue	Date
1	INCLUDE EXTERIOR WALLS	4/11/14

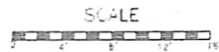


WWW. LLC  
 280 COUNTRY CLUB DR  
 STOCKBRIDGE, GA  
 TENANT FLOOR PLAN

Project Name	Second Floor
Date	4-11-14
Scale	3/16" = 1'
Sheet	FP-2



# 1st floor



TOTAL GROSS SF 1ST FLR (EXTERIOR FACE OF BLDG)	6520 SF
USABLE AREA 1ST FLR (RENTABLE MENUS, CLOSET, LOBBIES, JANITOR, TELEPHONE, RESTROOMS, CORRIDOR, ELECTRICAL R/L, SERVER RM)	4,143 SF

RENTABLE AREA 1ST FLR (GROSS MINUS VERTICAL PENETRATIONS, STAIRS, ELEV, HVAC CHASE)	5,753 SF
STAIRS + ELEVATOR	525 SF
TOTAL AREA (INTERIOR WALLS)	6,278 SF

TOTAL GROSS SF ALL 3 FLRS (EXTERIOR FACE OF BLDG)	19,560 SF
RENTABLE AREA ALL 3 FLRS (GROSS MINUS VERTICAL PENETRATIONS, STAIRS, ELEV, HVAC CHASE)	17,259 SF
USABLE AREA ALL 3 FLRS (RENTABLE MENUS, CLOSET, LOBBIES, JANITOR, TELEPHONE, RESTROOMS, CORRIDOR, ELECTRICAL R/L, SERVER RM)	11,080 SF

## FIRST FLOOR TENANT RENTABLE AREA

NOTE: RENTABLE AREAS DO NOT INCLUDE VERTICAL PENETRATION, STAIRS, ELEV

TENANT A (RENTABLE AREA)	2,334 SF
TENANT B	2,075 SF
WWW, LLC - COMMON AREAS (DOES NOT INCLUDE STAIRS, ELEV)	605 SF
MECH ROOM	45 SF
TENANT A & TENANT B SHARED	694 SF
TOTAL RENTABLE AREA 1ST FLR (GROSS MINUS VERTICAL PENETRATIONS, STAIRS, ELEV, HVAC CHASE)	5,753 SF

### General Notes

No.	Revision/Issue	Date
1	INCLUDE INTERIOR WALLS	4-11-14

Firm Name and Address  
[www.telcoinc-all.com](http://www.telcoinc-all.com)  
  
 501 Phoenix Dr., Marietta, GA 30067

Project Name and Address  
 WWW, LLC  
 280 COUNTRY CLUB DR  
 STOCKBRIDGE, GA  
 TENANT FLOOR PLAN

Project	FIRST FLOOR	Sheet	FP-1
Date	4-11-14		
Scale	3/16" = 1'		