



NOW OR FORMERLY
MID-CAROLINA ELECTRIC CO.-OP INC.

NOW OR FORMERLY
ALPINE UTILITIES INC.

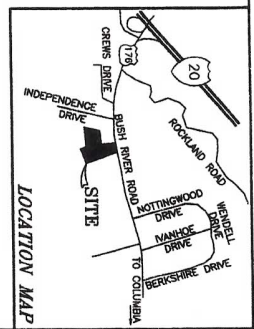
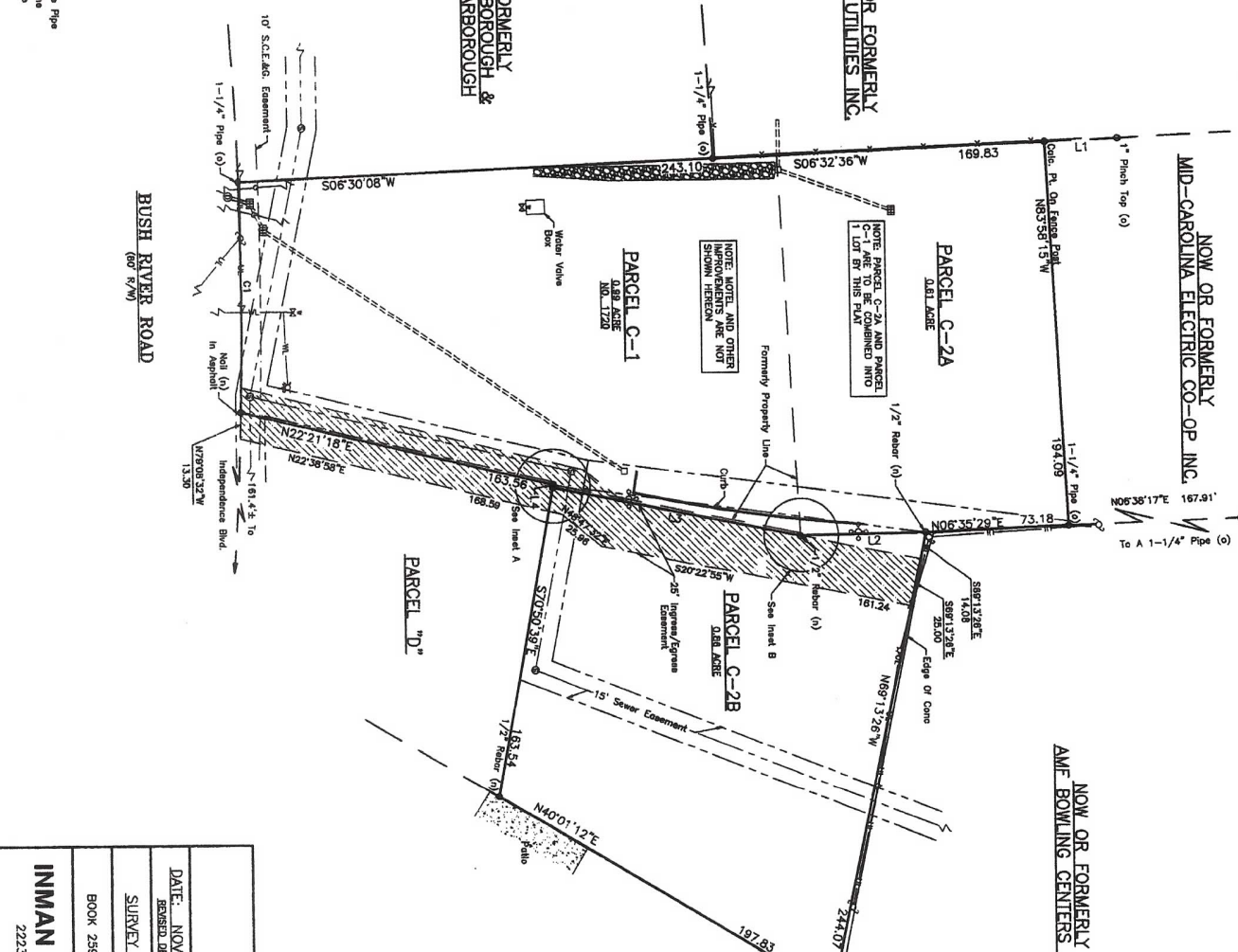
NOW OR FORMERLY
AME BOWLING CENTERS INC.

NOW OR FORMERLY
MONTEREX CORPORATION
OF COLUMBIA

NOW OR FORMERLY
JOHN A SCARBOROUGH &
G RIVERS SCARBOROUGH

BUSH RIVER ROAD
(60' R/W)

- SYMBOL LEGEND**
- Sanitary Sewer Manhole
 - ⊙ Driveway Manhole
 - ⊠ Catch Basin Grate
 - ⊞ Water Valve
 - ⊞ Fire Hydrant
 - ⊞ Pole
 - ⊞ Light Pole
 - ⊞ Four Light Pole
 - Concrete
 - Sanitary Sewer
 - Reinforced Concrete Pipe
 - Underground Gas Line
 - Overhead Utility Line
 - Water Line
 - Iron Line
 - Drain Line
 - Fence



CLIQUE TABLE

CLIQUE	BEARINGS	LENGTH	DELTA	CHORD	CH BEG
L1	S06°32'36\"	169.83	37.16	507°22'38\"	W
L2	N06°35'29\"	73.18	64.43	N07°42'42\"	E
L3	N88°13'26\"	197.63	128.63	N87°22'58\"	E
L4	N40°01'12\"	244.07	150	S70°50'39\"	E

NOTES:

- THIS PROPERTY IS HEREBY SUBMITTED TO EASEMENTS AND RESTRICTIONS OF RECORD NOT SHOWN HEREON.
- THIS SURVEY WAS MADE IN ACCORDANCE WITH THE SURVEYING ACT OF 1962, AS AMENDED.
- NO FLOOD ZONE INSPECTION AT THIS TIME.
- ALL DIMENSIONS AND ANGLES WERE MEASURED AND CHECKED BY THE SURVEYOR.
- PLAT REVISIONS: DECEMBER 29, 2007 TO CHANGE INGRESS/EGRESS EASEMENT.
- PLAT REVISIONS: DECEMBER 29, 2007 TO CHANGE INGRESS/EGRESS EASEMENT.

REFERENCES:

AS SHOWN AND DESIGNATED AS PARCELS C-1 & C-2, ON A PLAT PREPARED FOR B G I, INC., BY BAKER LAND SURVEYING CO. INC., DATED JUNE 25, 1991, REVISED JULY 23, 1993.

PLAT PREPARED FOR:

SHREFFOW, INC.
LENINGTON COUNTY, NEAR WEST COLUMBIA, SOUTH CAROLINA

DATE: NOVEMBER 29, 2005
REVISIONS: DECEMBER 29, 2007

SURVEY NO.: H12014

BOOK 258-27 T.M.S. NO. 003897-07-003 & 041 S.F. 136 No. 7

INMAN LAND SURVEYING COMPANY, INC.
2223 BULL STREET COLUMBIA SOUTH CAROLINA 29201
PHONE 252-1797 FAX 252-1798

RICHARD P. INMAN
P.L.S. NO. 13365