



FOR LEASE ±78,482 SF TOTAL

BOX 30/360

1145 107TH STREET
ARLINGTON, TX 76011



**CUSHMAN &
WAKEFIELD**



**BOX
INVESTMENT
GROUP**

BOX 30/360

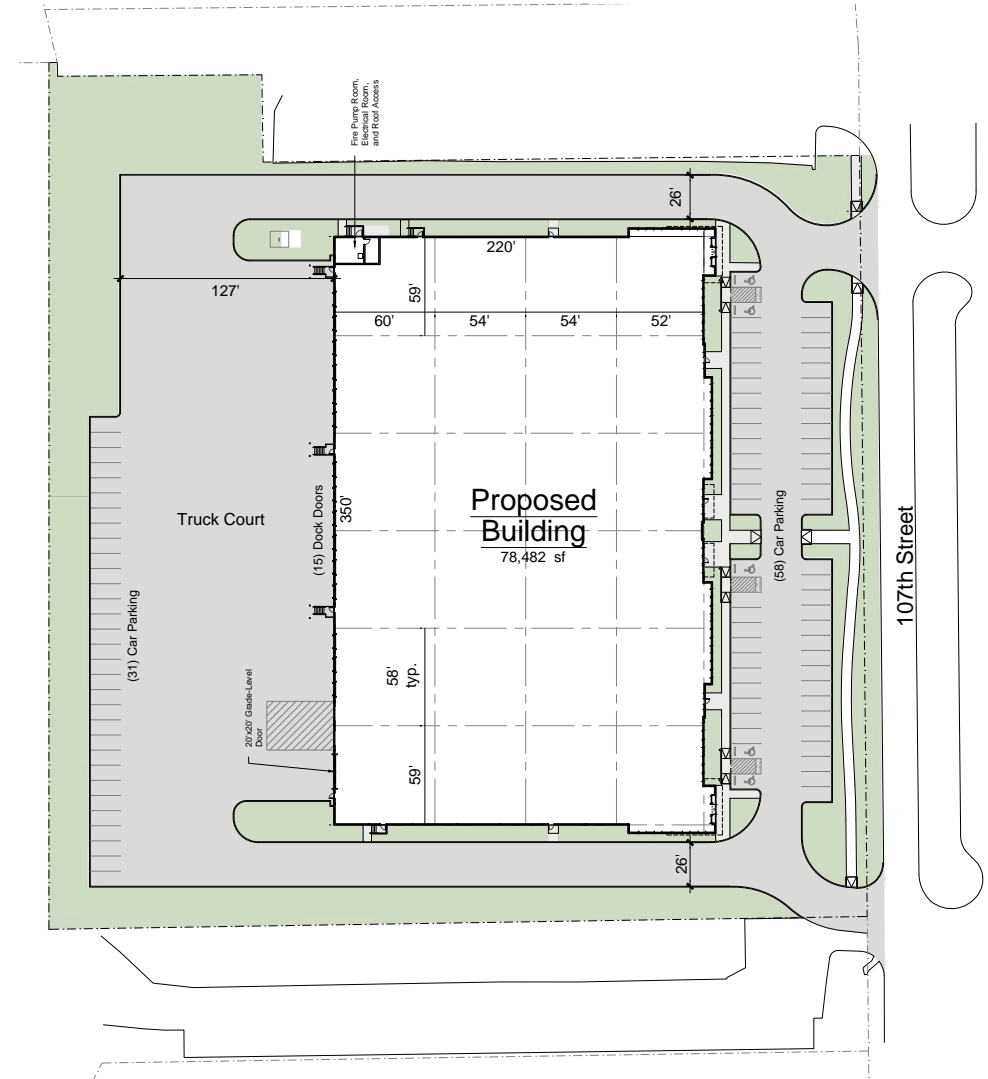
1145 107TH STREET ARLINGTON, TX 76011

Property Highlights

- 78,482 SF
- 2,900 SF Spec Office
- ESFR Sprinkler System
- 15 Dock High Doors
- 1 Grade Level Door (20' x 20')
- 89 Parking Spaces
- 220' Building Depth
- Front Park/Rear Load Configuration
- 32' Clear Height
- 127' Truck Court
- Typical Column Spacing - 58' x 54'
- 500 KVA Transformer with a 1,200 Amp Service - Heavy Power Ready
- 6,000 SF Linear Park Tenant Amenity
- Potential for Outdoor Storage (Up to 1 Acre)

Location Highlights

- Best East/West Ingress/Egress in Upper GSW via I-30 Six Flags Exit
- Immediate Access to Interstate 30 and State Highway 360
- 12 Minutes to DFW Airport
- Located in the Heart of Core GSW
- Excellent Labor Base

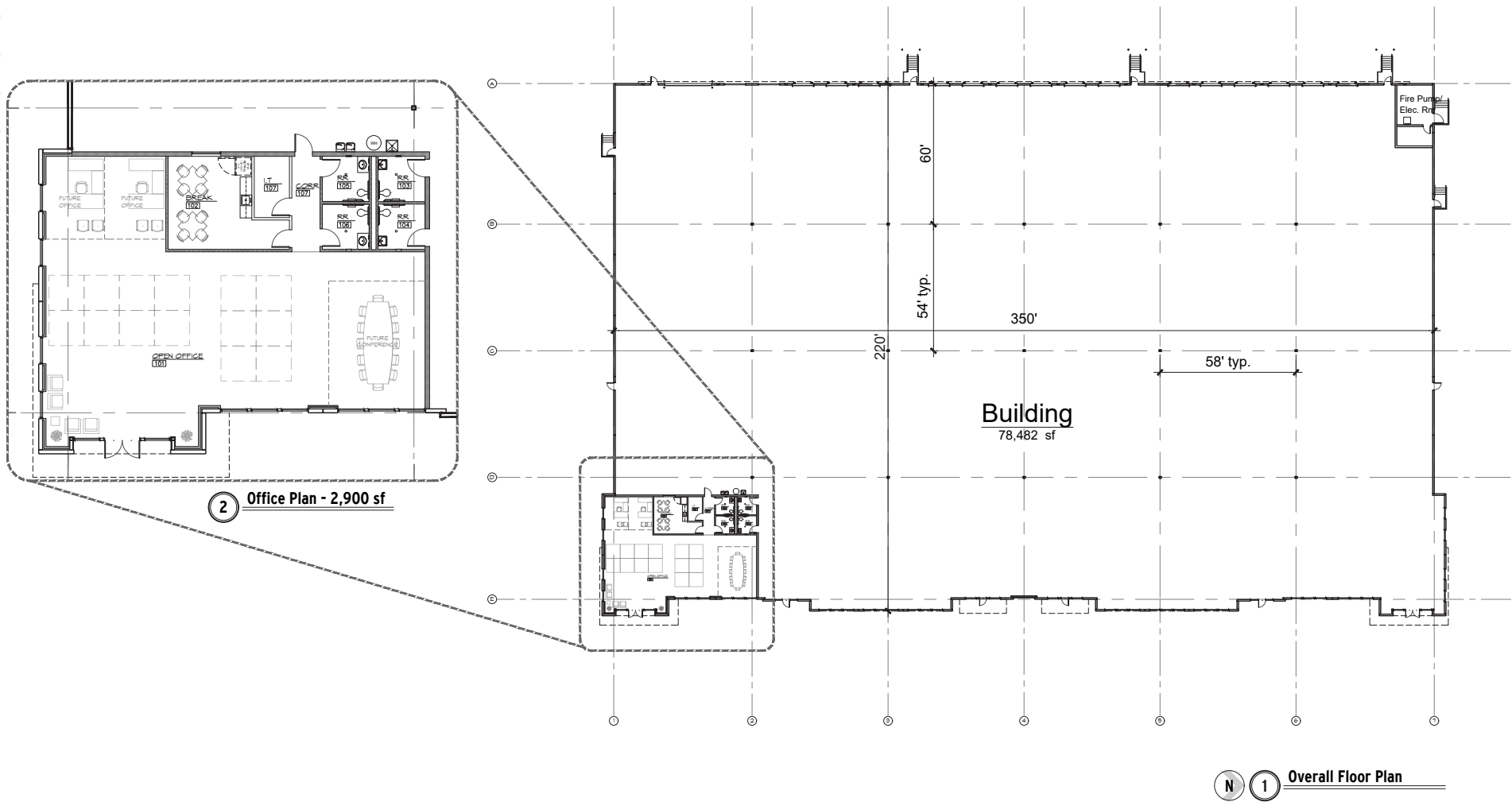


**NEW DEVELOPMENT WITH PRIME
ACCESS TO I-30 IN CORE GSW**

BOX 30/360

1145 107TH STREET ARLINGTON, TX 76011

Spec Office Plan



BOX 30/360

1145 107TH STREET ARLINGTON, TX 76011



BOX 30/360



SIX FLAGS DRIVE

SIX FLAGS DRIVE

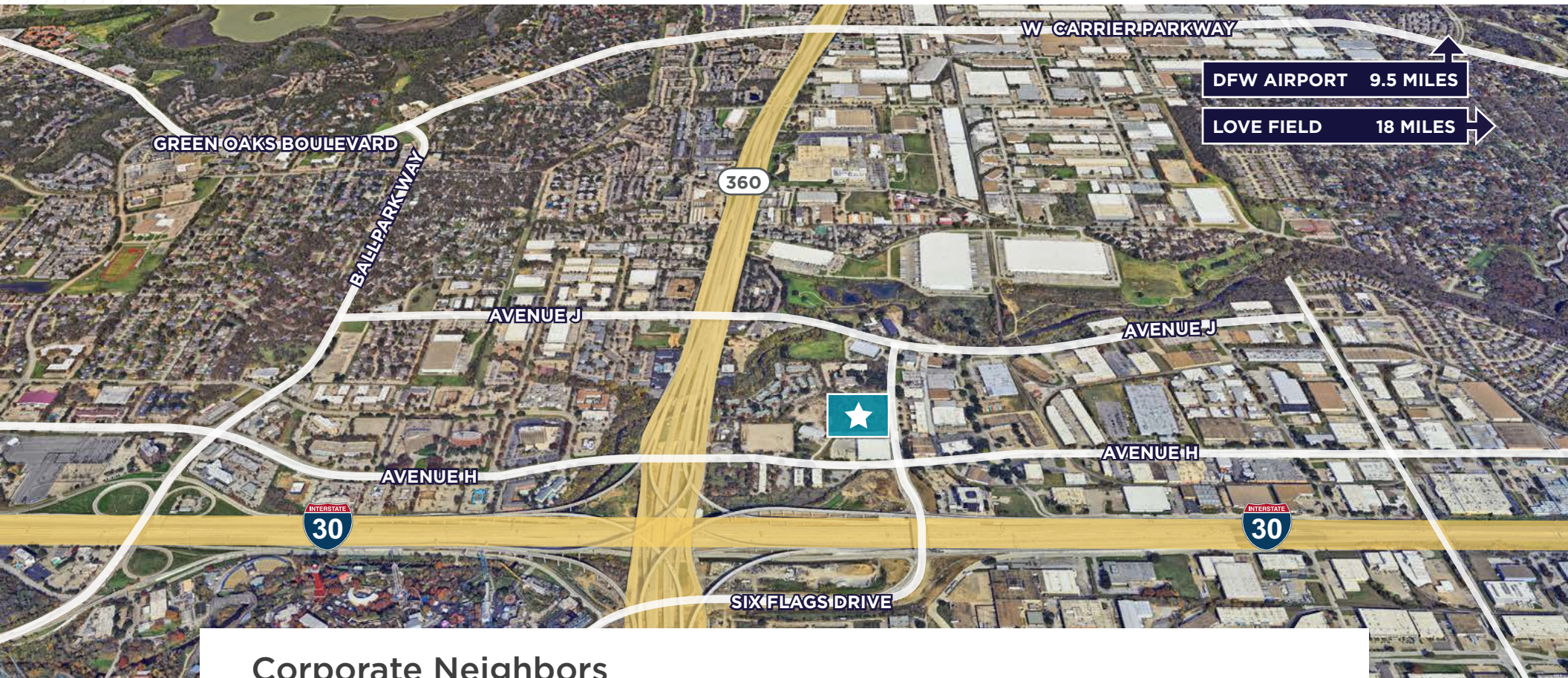
LEGEND

- Entering
- Exiting



BOX 30/360

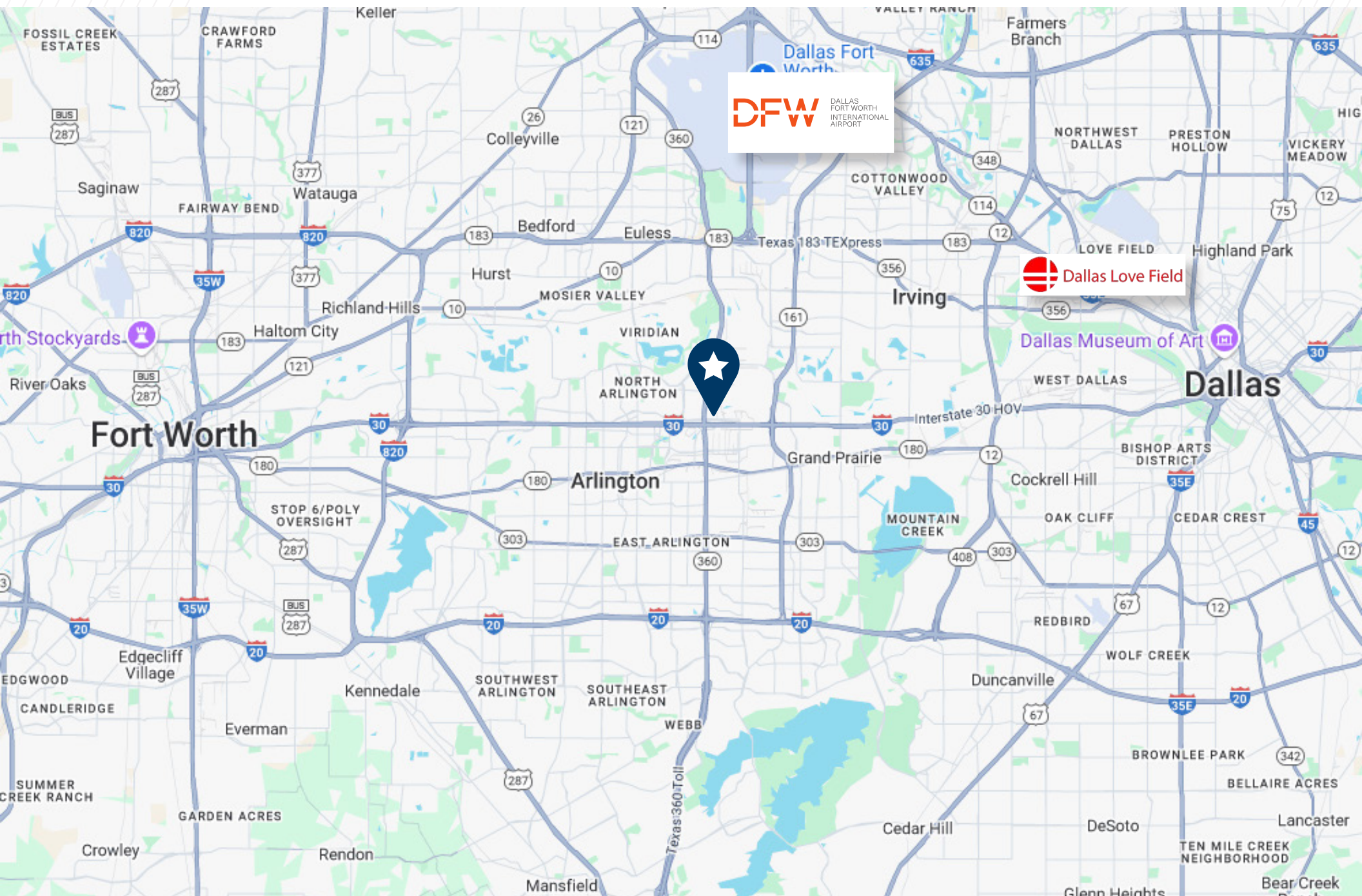
1145 107TH STREET ARLINGTON, TX 76011



Corporate Neighbors



1145 107TH STREET ARLINGTON, TX 76011





FOR MORE INFORMATION, CONTACT:

Riley Maxwell
Senior Director
+1 972 663 9839
riley.maxwell@cushwake.com

John Brewer
Managing Director
+1 972 663 9895
john.brewer@cushwake.com

©2025 Cushman & Wakefield. All rights reserved. The information contained in this communication is strictly confidential. This information has been obtained from sources believed to be reliable but has not been verified. NO WARRANTY OR REPRESENTATION, EXPRESS OR IMPLIED, IS MADE AS TO THE CONDITION OF THE PROPERTY (OR PROPERTIES) REFERENCED HEREIN OR AS TO THE ACCURACY OR COMPLETENESS OF THE INFORMATION CONTAINED HEREIN, AND SAME IS SUBMITTED SUBJECT TO ERRORS, OMISSIONS, CHANGE OF PRICE, RENTAL OR OTHER CONDITIONS, WITHDRAWAL WITHOUT NOTICE, AND TO ANY SPECIAL LISTING CONDITIONS IMPOSED BY THE PROPERTY OWNER(S). ANY PROJECTIONS, OPINIONS OR ESTIMATES ARE SUBJECT TO UNCERTAINTY AND DO NOT SIGNIFY CURRENT OR FUTURE PROPERTY PERFORMANCE.



**CUSHMAN &
WAKEFIELD**



**BOX
INVESTMENT
GROUP**