

**545 W BROAD ST
PAULSBORO, NJ 08066**



1,850 SF
Available for lease

Paulsboro Plaza



Size 1,850 SF
Lease Price Upon Request
VPD 6,366 visits per day
Use Retail - 1,850 SF
 Pad Site

Comments
 Premier Community Center
 Anchored by Save-A-Lot and Dollar Tree
 Potential pad site opportunities
 Ample onsite parking
 Located directly in front of ExxonMobil
 Lube Plant and adjacent to PBF Energy

1970/ 2017
Year Built/ Renovated

400
Spaces

71,800 ADT
Interstate 295

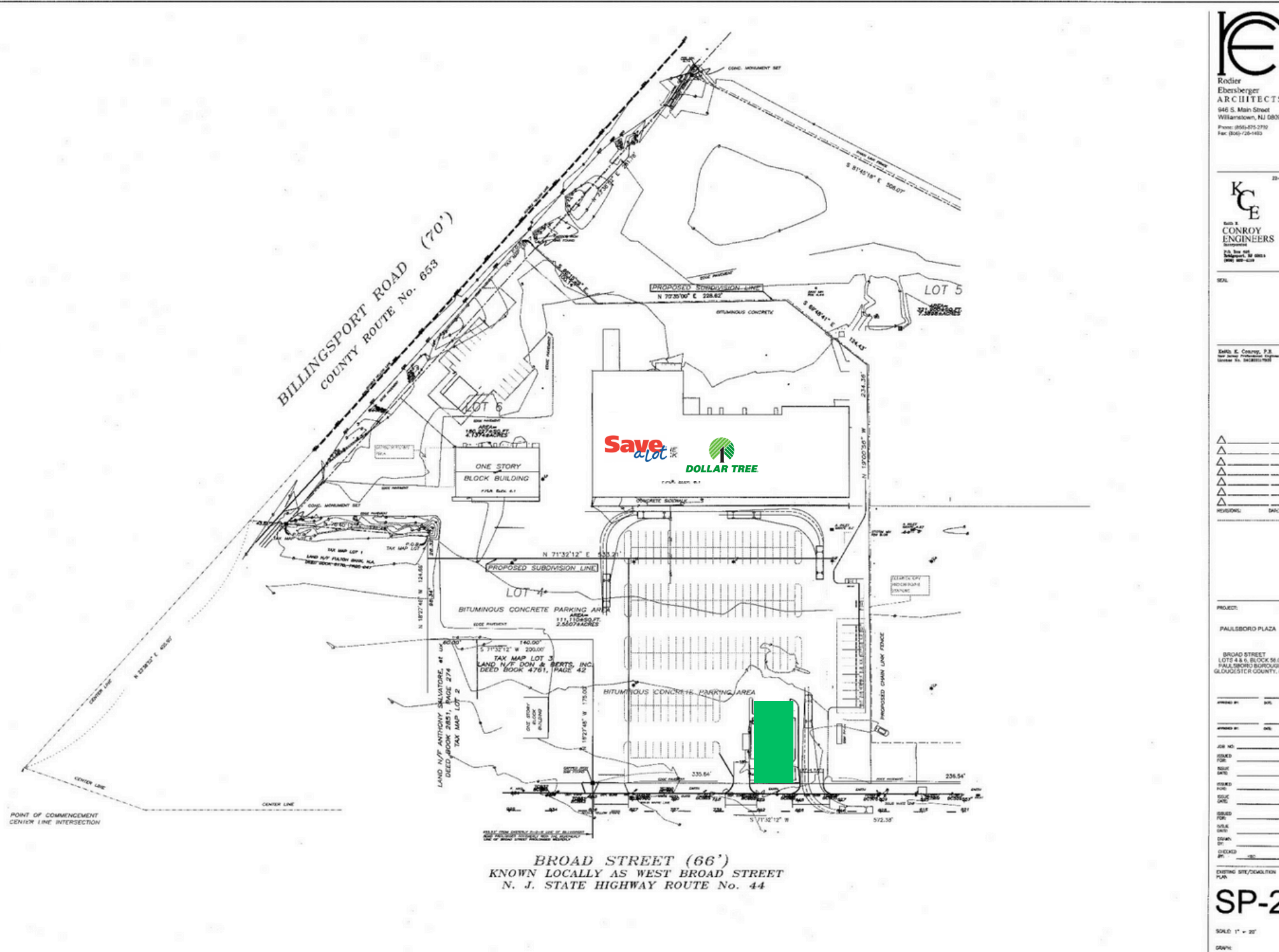
Demographics			
	1 Mile	3 Mile	5 Mile
Population	6,456	17,617	79,093
Household	2,478	6,756	31,416
Average HH Income	\$80,026	\$110,595	\$107,622

Contact Information :
Brandon Eshaghoff
 Brandon@BSGManagement.com
 201-869-1155

PHOTOS:



SITE LAYOUT:



BROAD STREET (66')
 KNOWN LOCALLY AS WEST BROAD STREET
 N. J. STATE HIGHWAY ROUTE No. 44

KE
 Rodier
 Ebersberger
 ARCHITECTS
 946 S. Main Street
 Williamstown, NJ 08094
 Phone: (856) 475-2710
 Fax: (856) 726-1443

KCE
 Keith &
 CONROY
 ENGINEERS
 Surveyors
 215, New York
 Philadelphia, PA 19103
 (800) 442-1313

SCALE:
 Keith & Conroy, P.S.
 Not a Survey Professional
 License No. 0408311783

- △
- △
- △
- △
- △
- △
- △
- △
- △
- REVISIONS: DAC

PROJECT:
 PAULSBORO PLAZA
 BRAD STREET
 LOTS 4, 5 & 6, BLOCK 56.02
 PAULSBORO BOROUGH
 GLoucester COUNTY, NJ

PREPARED BY: DAC
 APPROVED BY: DAC
 JOB NO:
 DESIGNED FOR:
 DATE:
 SCALE:
 SHEET NO.:
 SHEET TOTAL:
 CHECKED BY:
 DATE:
 DRAWN BY:
 DATE:
 CHECKED BY:
 DATE:

EXISTING SITE/DEVELOPMENT PLAN
SP-2
 SCALE: 1" = 20'
 DATE:

REGIONAL MAP:

