



SUBLEASE AVAILABLE

Mercantile Center

4704 & 4708 Mercantile Dr

Fort Worth, TX 76137

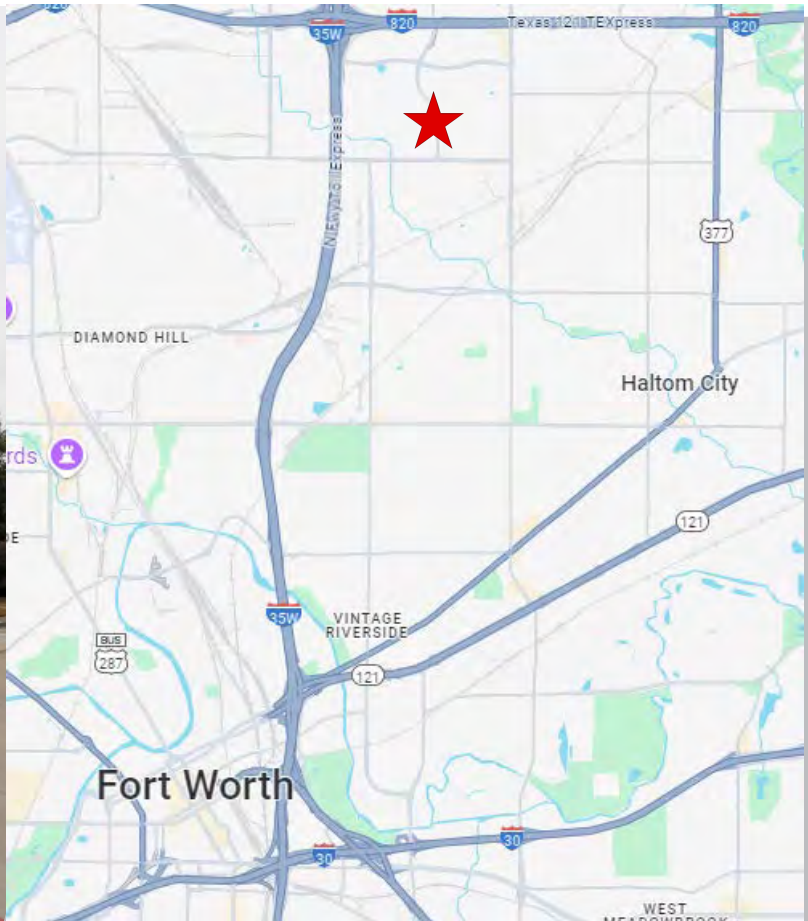
4704 - 37,337 RSF

4708 - 34,063 RSF

(71,400 RSF TOTAL)



PROPERTY HIGHLIGHTS



OVERVIEW

- Suite 4704 - 37,337 RSF
- Suite 4708 - 34,063 RSF
- Sublease Expiration: September 30, 2031
- Rate: \$9.50/RSF + NNN
- Plug & Play: FF&E Available
- Parking Ratio: 8.19 / 1,000 SF

SPACE HIGHLIGHTS

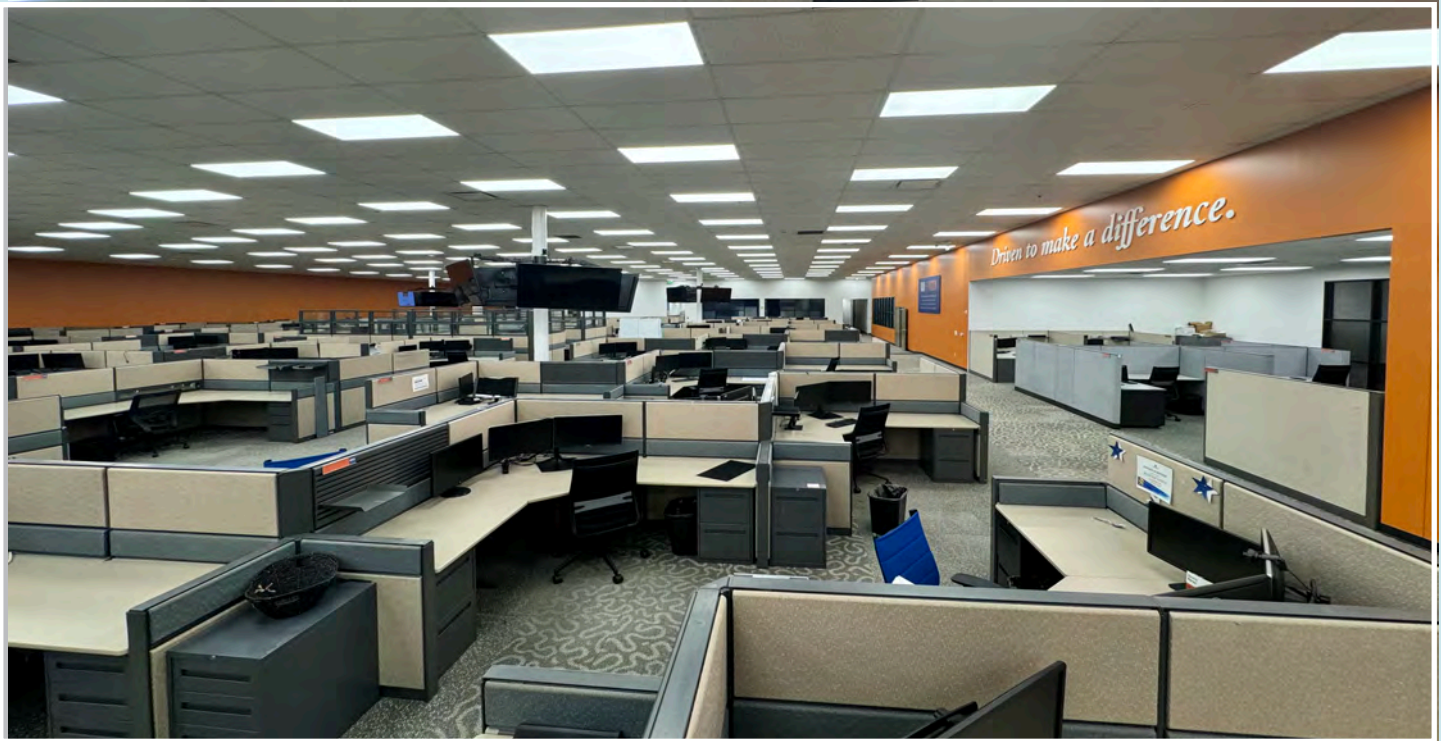
4704

- Cubes: 190
- Offices: 7
- Conference Rooms: 10
- Training Rooms: 1

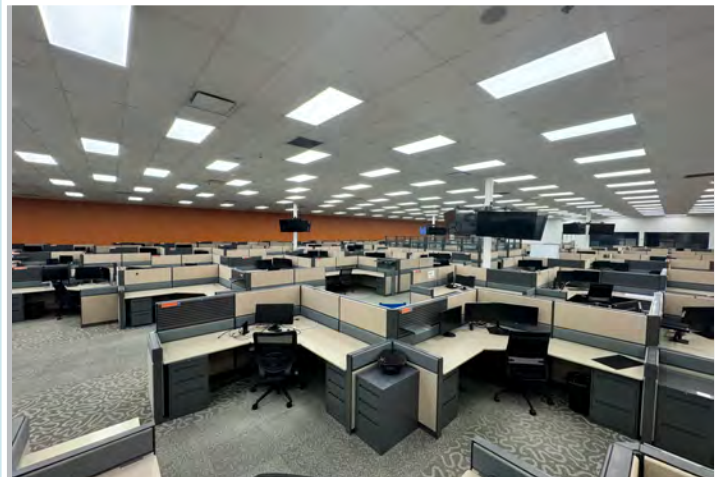
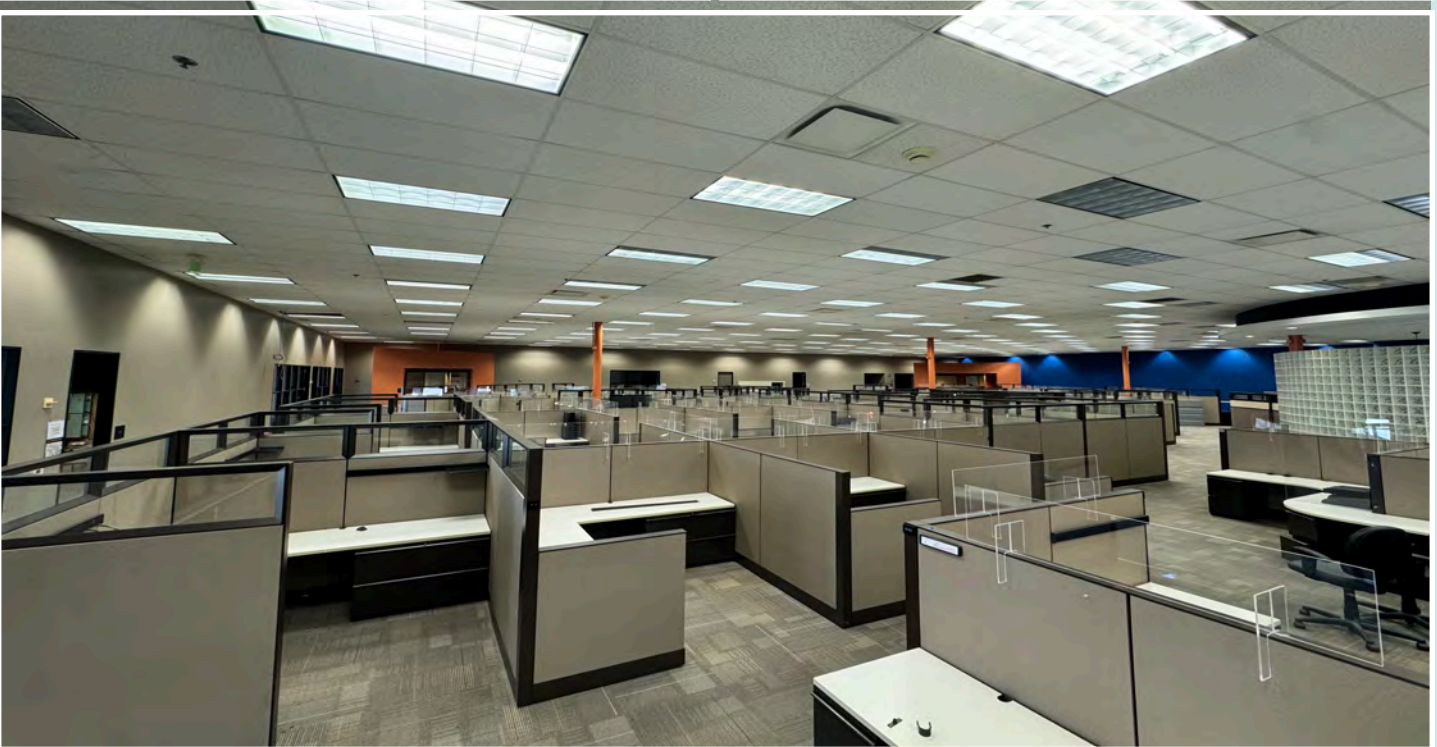
4708

- Cubes: 188
- Offices: 10
- Conference Rooms: 10
- Training Rooms: 0

4704 SPACE PHOTOS

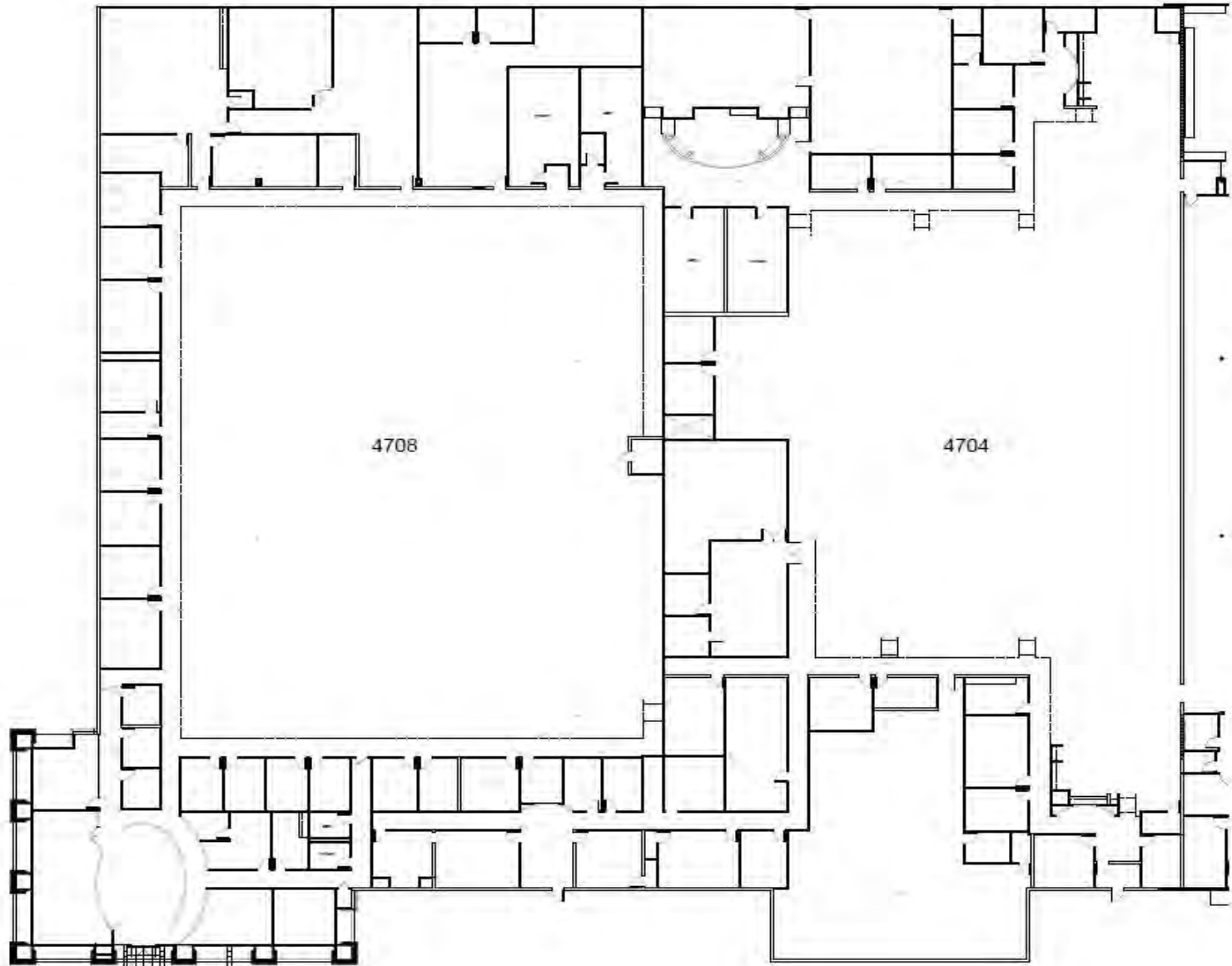


4708 SPACE PHOTOS



4704 & 4708 Floorplan

4704-37,337 RSF,
4708-34,063 RSF





For more information
please contact:

Spencer Oster

Senior Associate

+1 972 663 9964

spencer.oster@cushwake.com

Peyton Hall

Associate

+1 817 908 2039

peyton.hall@cushwake.com

2021 McKinney Avenue, Suite 900

Dallas, Texas 75201

Direct +1 972 663 9600

Fax +1 972 663 9666

cushmanwakefield.com

