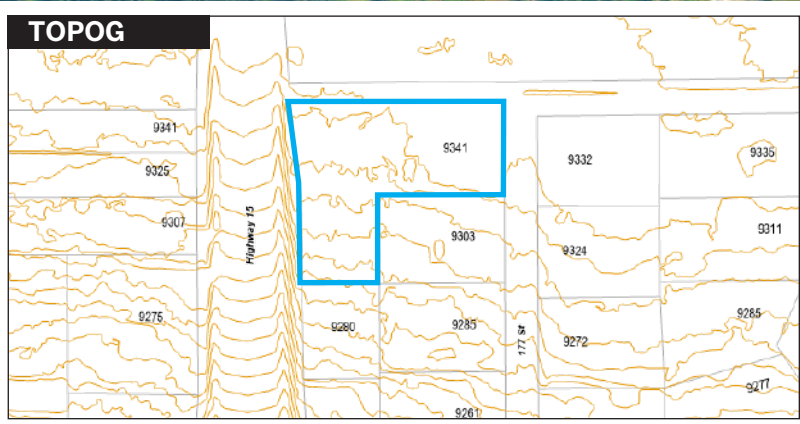
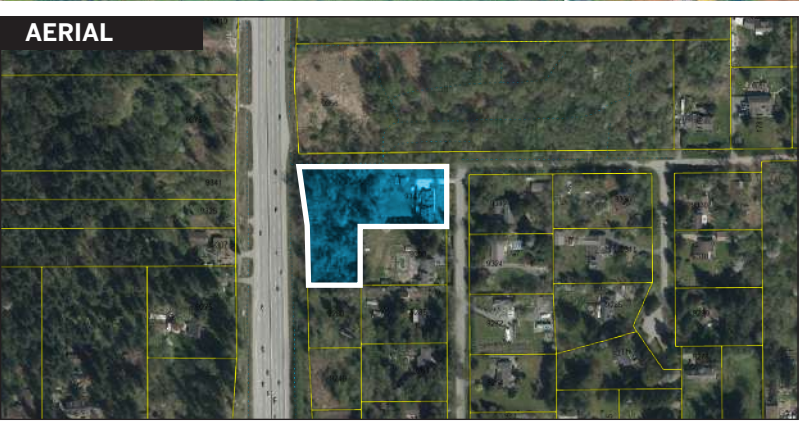
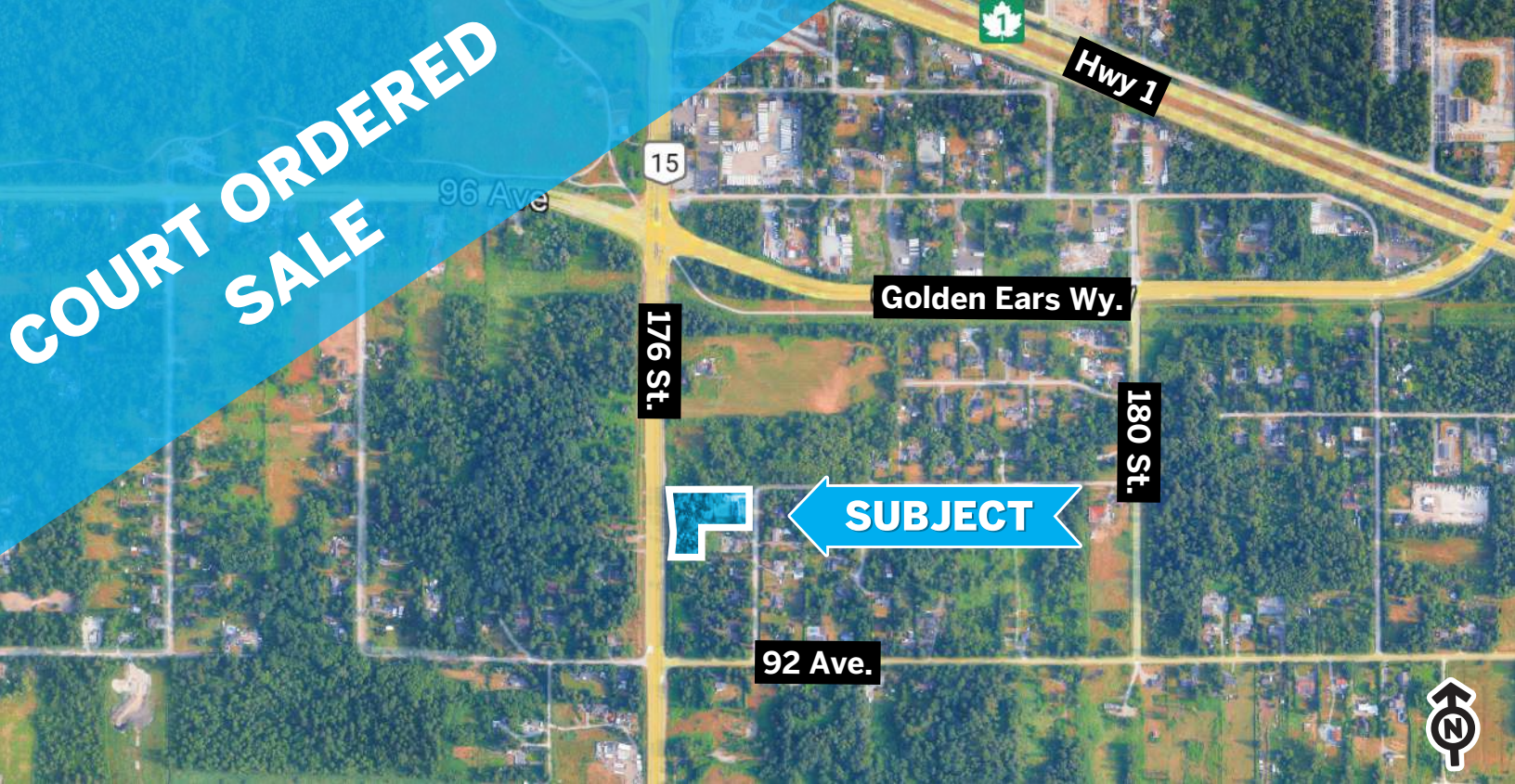


COURT ORDERED SALE



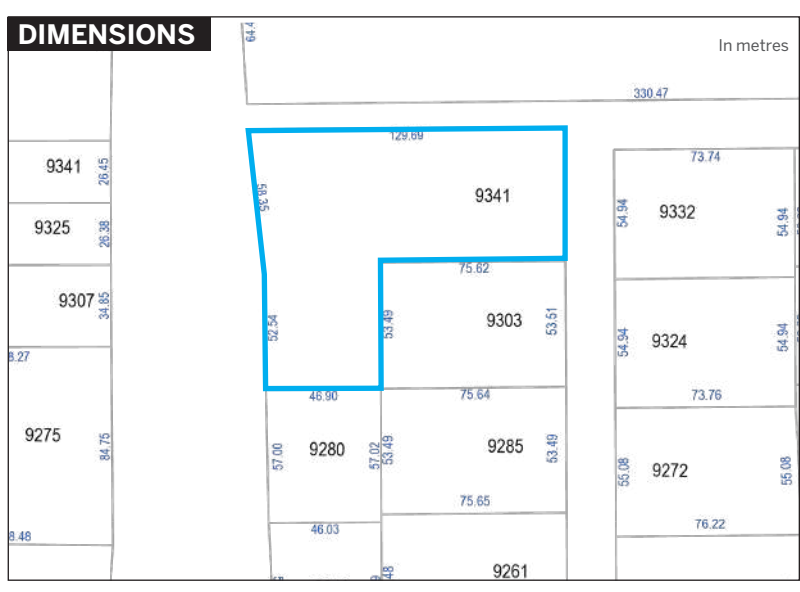
TOWNHOME DEVELOPMENT SITE

AREA:
Anniedale - Tynehead

ADDRESS:
9341 177 St, [Surrey, BC](#)

SIZE:
2.41 Acres

PRICE:
\$5,950,000
(Potential Lender Financing Available - See Page 2)



HOMELIFE ADVANTAGE REALTY LTD.
Joe Varing - Personal Real Estate Corporation Ltd.
604.565.3478 | info@varinggroup.com
 360-3033 Immel Street, Abbotsford, BC V2S 6S2

This document has been prepared by Varing Marketing Group for marketing and general information only. Varing Marketing Group believes the information contained in this information package is correct, but makes no representations or warranties with respect thereto. Interested parties should complete their own independent investigations and enquiries as to the ownership and condition of the property and its suitability for any particular purpose. Not intended to cause breach of existing agency agreement.

PROPERTY DESCRIPTION

CIVIC ADDRESS: 9341 177 St, Surrey, BC

SIZE: 2.41 Acres

OPPORTUNITY:

- This Future Development Site is designated as “Townhouse” in the Anniedale-Tynehead NCP.
- This is a perfect investment property to that will maximize its value through its designated land use.
- Surrounded by other land holders who support future development of this area.

POSSIBLE LENDER FINANCING AVAILABLE:

- Up to 75% LTV
- Prime + 2%
- Upto 18 months post completion

TYNEHEAD LATEST LAND USE MAP

