



## LAND FOR SALE

**+/- 2.5927 Acres**  
NEC Morriss Rd and Eaton, Flower Mound, TX

### LOCATION:

Prime development land fronting Morriss Road between FM 407 and FM 1171/Cross Timbers Road.

Within walking distance to The Riverwalk at Central Park and Marcus High School.

Lot 2R1, Block A, Smith Addition.

### SIZE:

- +/- 2.5927 Acres

### PROPOSED USES:

- Retail or Office

### PRICE:

- \$1,150,000

### ZONING:

- PD-11 with Retail 2 (R2) zoning



### FOR INFORMATION:

Phyllis Garcia

972.899.1851 | [Phyllis@BridgeRealtyTexas.com](mailto:Phyllis@BridgeRealtyTexas.com)

[www.BridgeRealtyTexas.com](http://www.BridgeRealtyTexas.com)

400 Parker Square, Suite 270H | Flower Mound, TX 75028

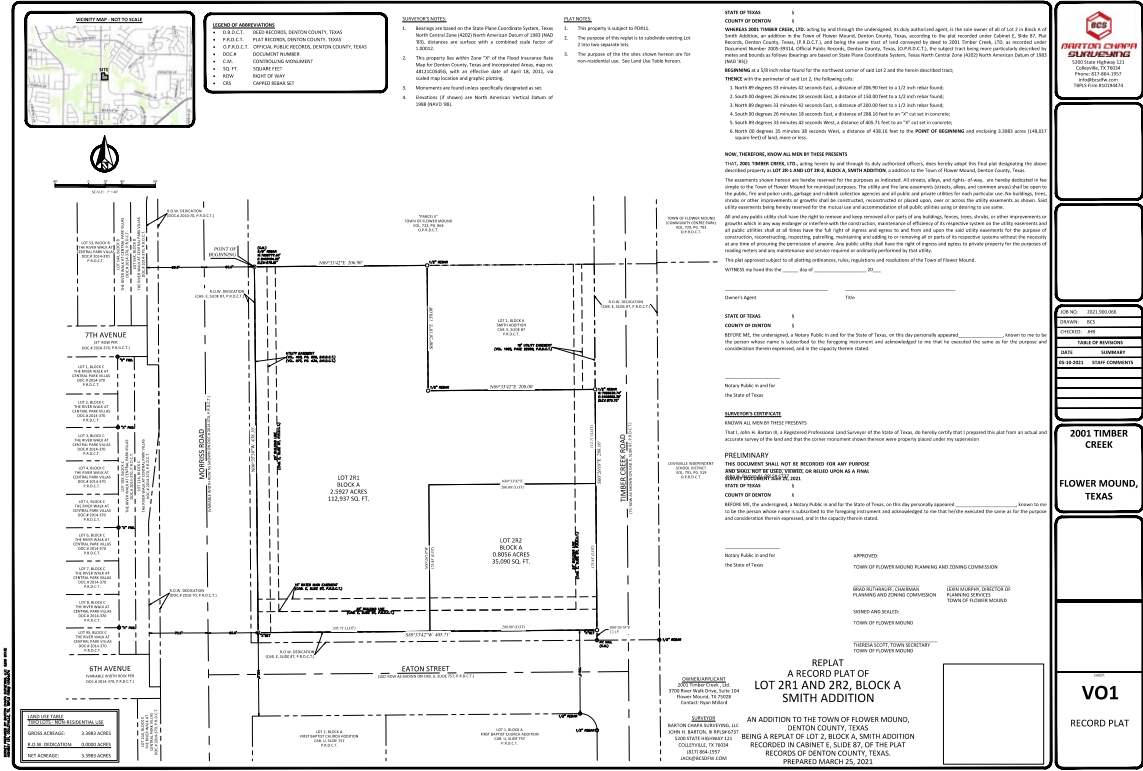
This information is believed to be accurate, but no representation or warranty, express or implied, as to its accuracy or completeness is made by any party. The presentation of this property is submitted subject to errors, omissions, change of price or prior sale or lease, or withdrawal without notice.



# SURVEY

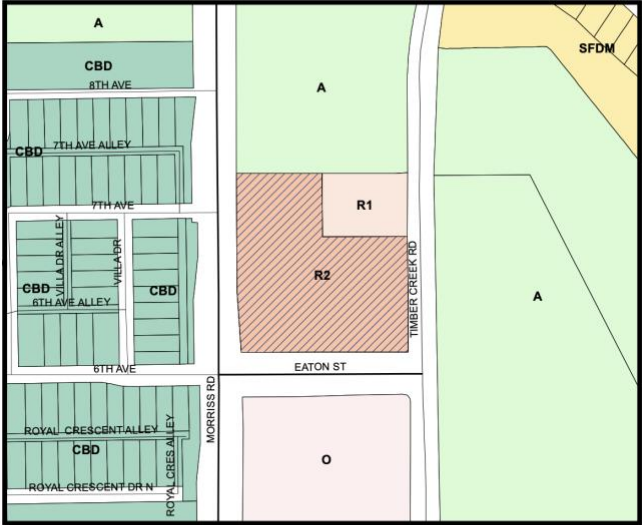
## +/- 2.5927 Acres

### NEC Morriss Rd and Eaton Flower Mound, TX



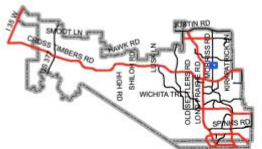
### Vicinity Map

Reference Project: RP21-0004



- LEGEND
- Agriculture
  - Central Business District
  - Office
  - Retail 1
  - Retail 2
  - Single Family Density Medium

Subject Property



Map Location



