

FOR SALE

10557 JUNIPER AVENUE
FONTANA, CALIFORNIA 92337

Fontana Crossings Business Park INDIVIDUAL INDUSTRIAL BUILDING FOR SALE UNIT A



10557 Juniper Ave - Unit A

Juniper Ave

Tai Ngo CCIM
Principal | Lic. ID # 01779172
P \\ 626.622.9770
E \\ tngo@lee-associates.com

Lee & Associates® - Corp. ID# 01125429
13181 Crossroads Pkwy, North, Suite 300
City of Industry, CA 91746
P \\ 626.699.7500

Abraham Garnica
Excellence RE Real Estate | Lic. ID # 01190292
P \\ 562.755.7696
E \\ AbrahamGarnica@yahoo.com

LEE & ASSOCIATES
COMMERCIAL REAL ESTATE SERVICES

Fontana Crossings Business Park

10557 JUNIPER AVE (UNIT A)
FONTANA, CALIFORNIA 92337

THE OFFERING

- Part of a 5 Building, 15 Unit, & 76,753 SF Industrial Condominium Park on 4.9 Acre Site
- Built in 2006
- 2.8:1,000 SF Parking Ratio (In Common)
- Easy Access to 10 Freeway
- Ideal for Owner-Users and/or Investors

UNIT A

*5,498 SF Industrial Condominium

±2,707 SF 2-story office build-out

2 ground level loading

22' Clear Height

200 A, 277/480 V, 3P4W

0255-271-02

Skylights

Three (3) restrooms /One (1) shower



*Building size to be verified as it may differ from title and county assessor

Tai Ngo CCIM
Principal | Lic. ID # 01779172
P \\ 626.622.9770
E \\ tngo@lee-associates.com

Lee & Associates® - Corp. ID# 01125429
13181 Crossroads Pkwy, North, Suite 300
City of Industry, CA 91746
P \\ 562.699.7500

Abraham Garnica
Excellence RE Real Estate | Lic. ID # 01190292
P \\ 562.755.7696
E \\ AbrahamGarnica@yahoo.com

LEE & ASSOCIATES
COMMERCIAL REAL ESTATE SERVICES

Fontana Crossings Business Park

10557 JUNIPER AVE (UNIT A)
FONTANA, CALIFORNIA 92337

PROPERTY AERIAL



Tai Ngo CCIM
Principal | Lic. ID # 01779172
P \\ 626.622.9770
E \\ tngo@lee-associates.com

Lee & Associates® - Corp. ID# 01125429
13181 Crossroads Pkwy, North, Suite 300
City of Industry, CA 91746
P \\ 626.699.7500

Abraham Garnica
Excellence RE Real Estate | Lic. ID # 01190292
P \\ 562.755.7696
E \\ AbrahamGarnica@yahoo.com

LEE & ASSOCIATES
COMMERCIAL REAL ESTATE SERVICES

Fontana Crossings Business Park

10557 JUNIPER AVE (UNIT A)
FONTANA, CALIFORNIA 92337

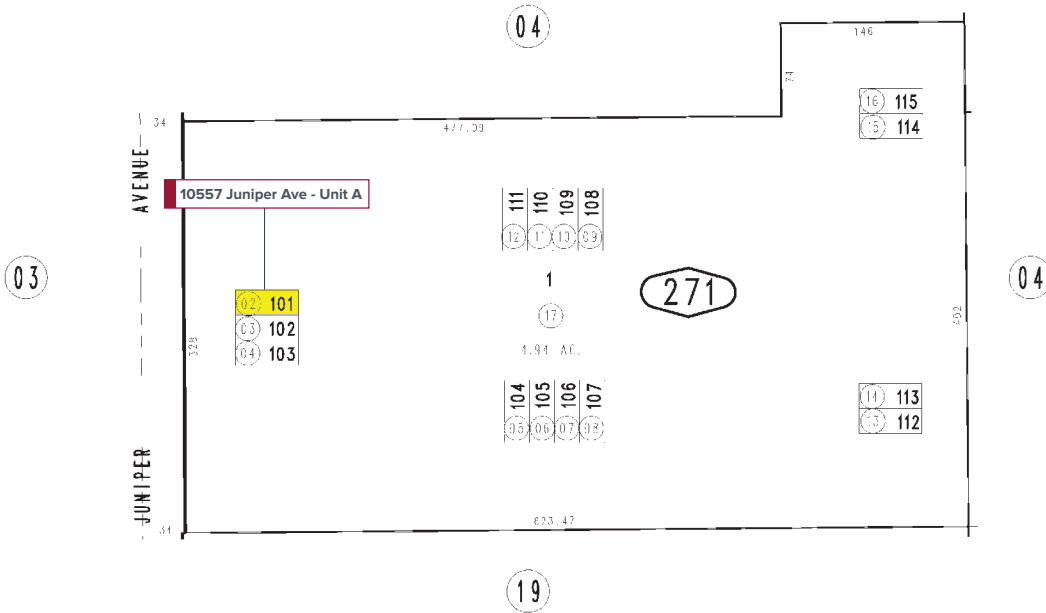
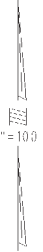
PARCEL MAP

THIS MAP IS FOR THE PURPOSE
OF AD VALOREM TAXES ONLY.

Tract Map 17596, M.B. 323/83-85

City of Fontana
Tax Rate Area
10005

0255-27



Tai Ngo CCIM
Principal | Lic. ID # 01779172
P \\ 626.622.9770
E \\ tngo@lee-associates.com

Lee & Associates® - Corp. ID# 01125429
13181 Crossroads Pkwy, North, Suite 300
City of Industry, CA 91746
P \\ 562.699.7500

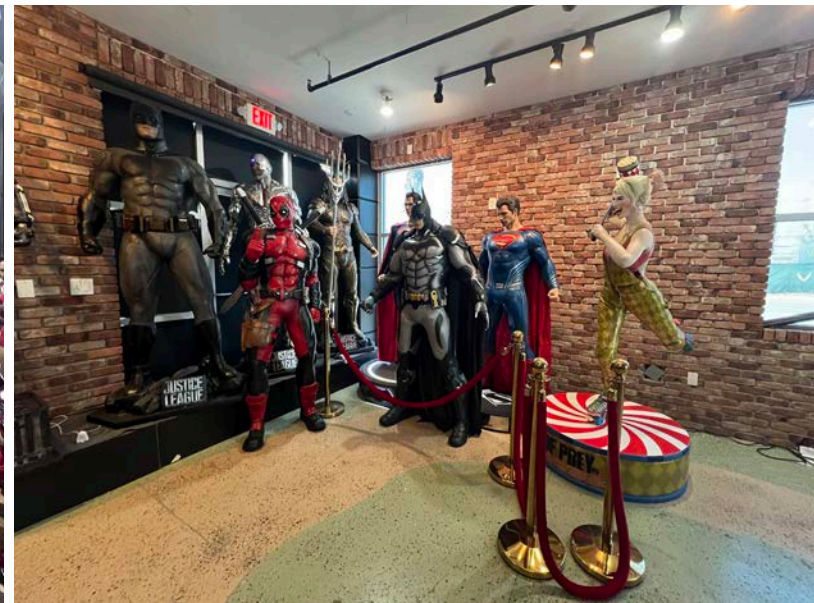
Abraham Garnica
Excellence RE Real Estate | Lic. ID # 01190292
P \\ 562.755.7696
E \\ AbrahamGarnica@yahoo.com



Fontana Crossings Business Park

10557 JUNIPER AVE (UNIT A)
FONTANA, CALIFORNIA 92337

UNIT A



Tai Ngo CCIM
Principal | Lic. ID # 01779172
P \ 626.622.9770
E \ tngo@lee-associates.com

Lee & Associates® - Corp. ID# 01125429
13181 Crossroads Pkwy, North, Suite 300
City of Industry, CA 91746
P \ 562.699.7500

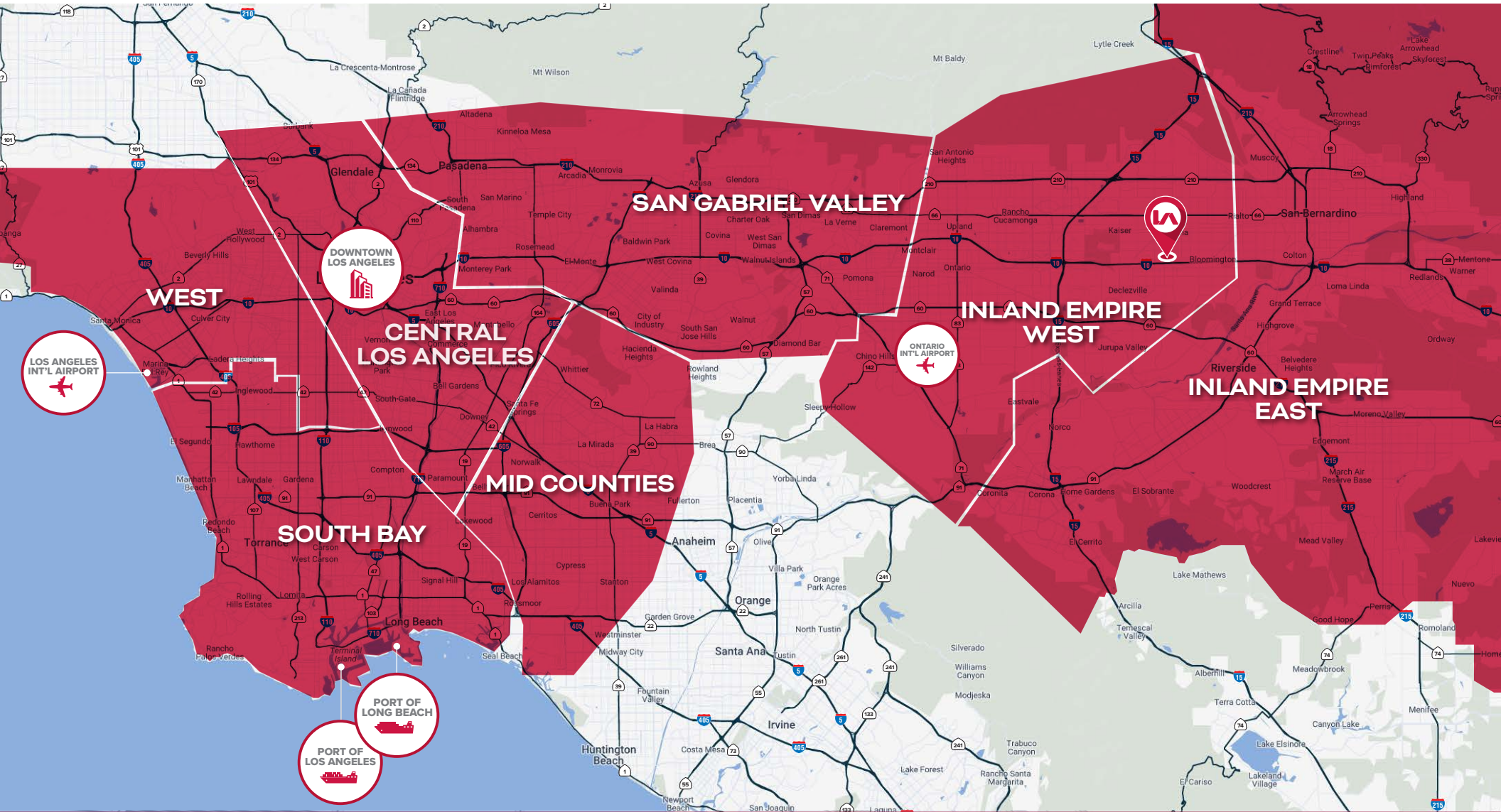
Abraham Garnica
Excellence RE Real Estate | Lic. ID # 01190292
P \ 562.755.7696
E \ AbrahamGarnica@yahoo.com

LEE & ASSOCIATES
COMMERCIAL REAL ESTATE SERVICES

Fontana Crossings Business Park

10557 JUNIPER AVE (UNIT A)
FONTANA, CALIFORNIA 92337

REGIONAL MAP



Tai Ngo CCIM
Principal | Lic. ID # 01779172
P \ 626.622.9770
E \ tngo@lee-associates.com

Lee & Associates® - Corp. ID# 01125429
13181 Crossroads Pkwy, North, Suite 300
City of Industry, CA 91746
P \ 562.699.7500

Abraham Garnica
Excellence RE Real Estate | Lic. ID # 01190292
P \ 562.755.7696
E \ AbrahamGarnica@yahoo.com

LEE & ASSOCIATES
COMMERCIAL REAL ESTATE SERVICES

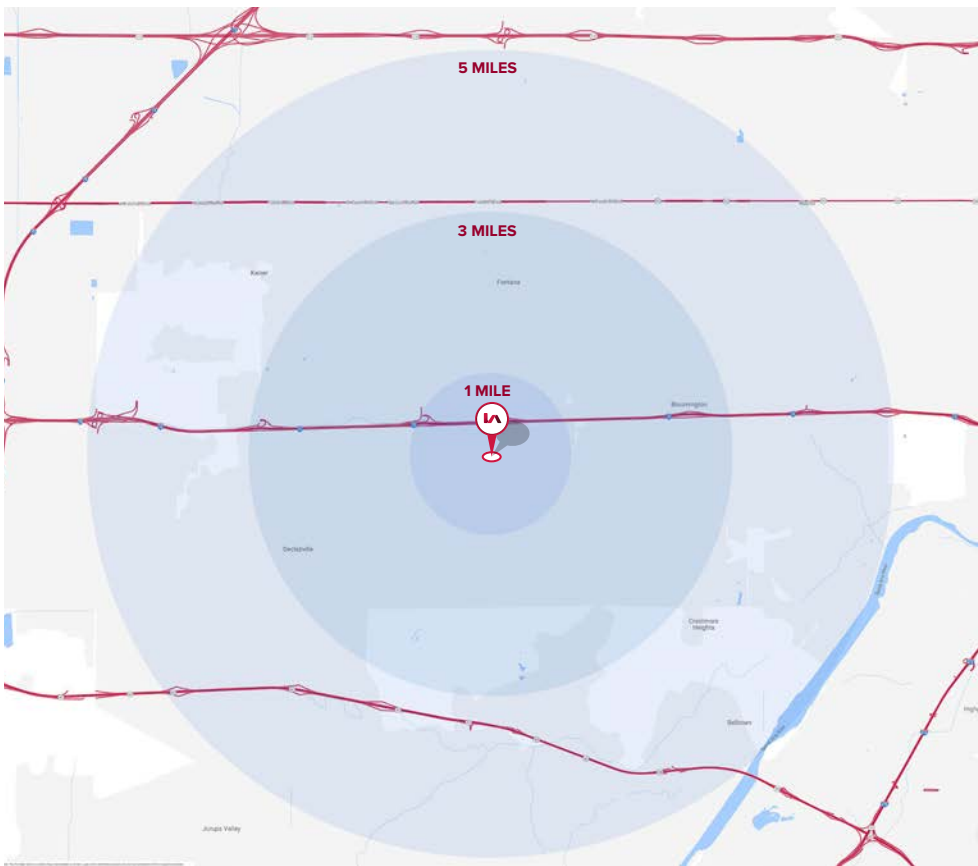
Fontana Crossings Business Park

10557 JUNIPER AVE (UNIT A)
FONTANA, CALIFORNIA 92337

DEMOGRAPHICS

2024	1 MILE	3 MILES	5 MILES
AVERAGE HOUSEHOLD INCOME (HHI)	\$97,270	\$99,120	\$105,173
POPULATION	9,806	120,566	313,651

Source: U.S. Census Bureau. Esri forecasts for 2022 and 2027. Esri converted Census 2010 data into 2020 geography.



Tai Ngo CCIM
Principal | Lic. ID # 01779172
P \\ 626.622.9770
E \\ tngo@lee-associates.com

Lee & Associates® - Corp. ID# 01125429
13181 Crossroads Pkwy, North, Suite 300
City of Industry, CA 91746
P \\ 562.699.7500

Abraham Garnica
Excellence RE Real Estate | Lic. ID # 01190292
P \\ 562.755.7696
E \\ AbrahamGarnica@yahoo.com

LEE & ASSOCIATES
COMMERCIAL REAL ESTATE SERVICES