

515 W 20TH STREET

OFFICE OPPORTUNITY

CHELSEA
BETWEEN 10TH AND 11TH AVENUE

CURRENT 



BUILDING OVERVIEW

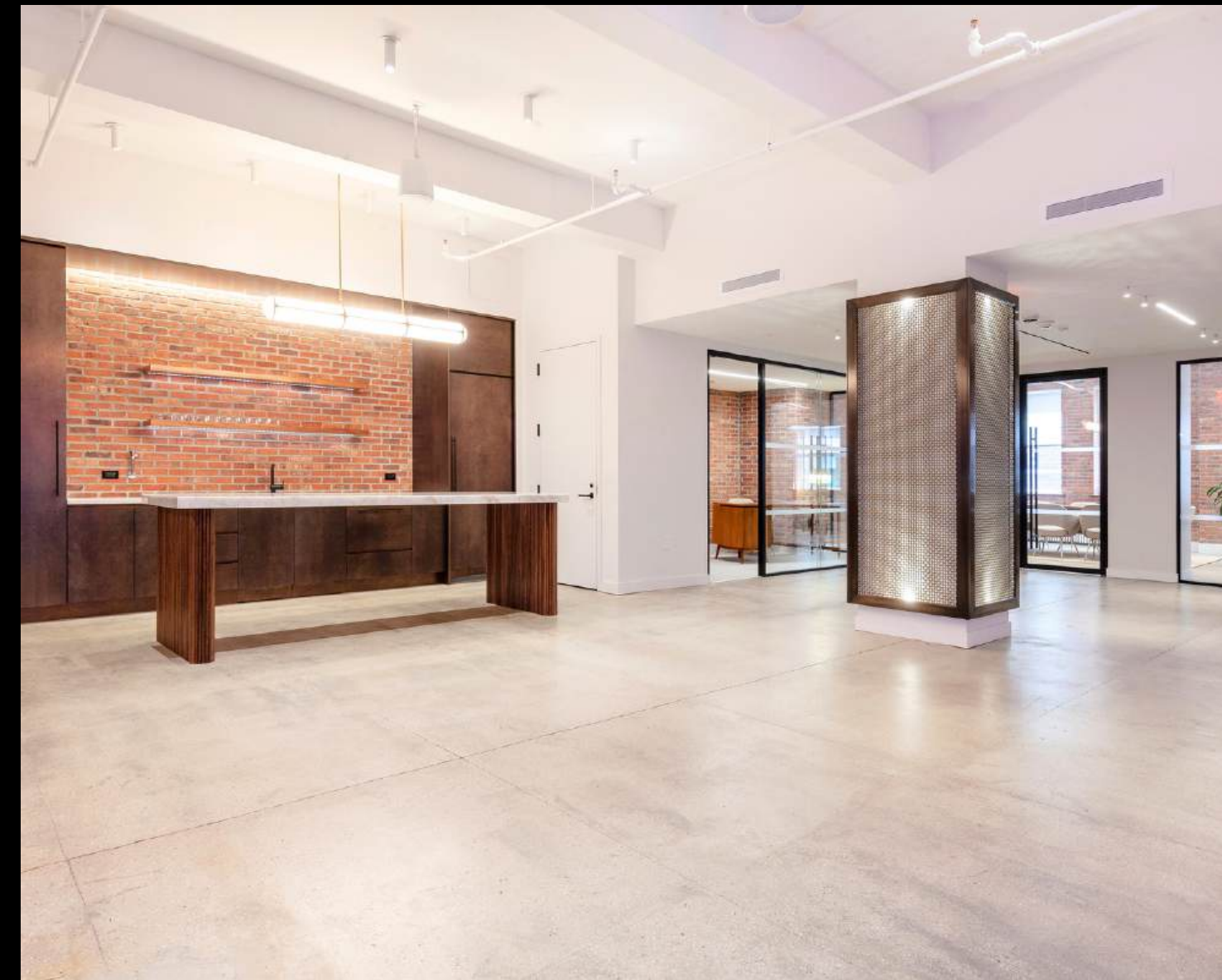
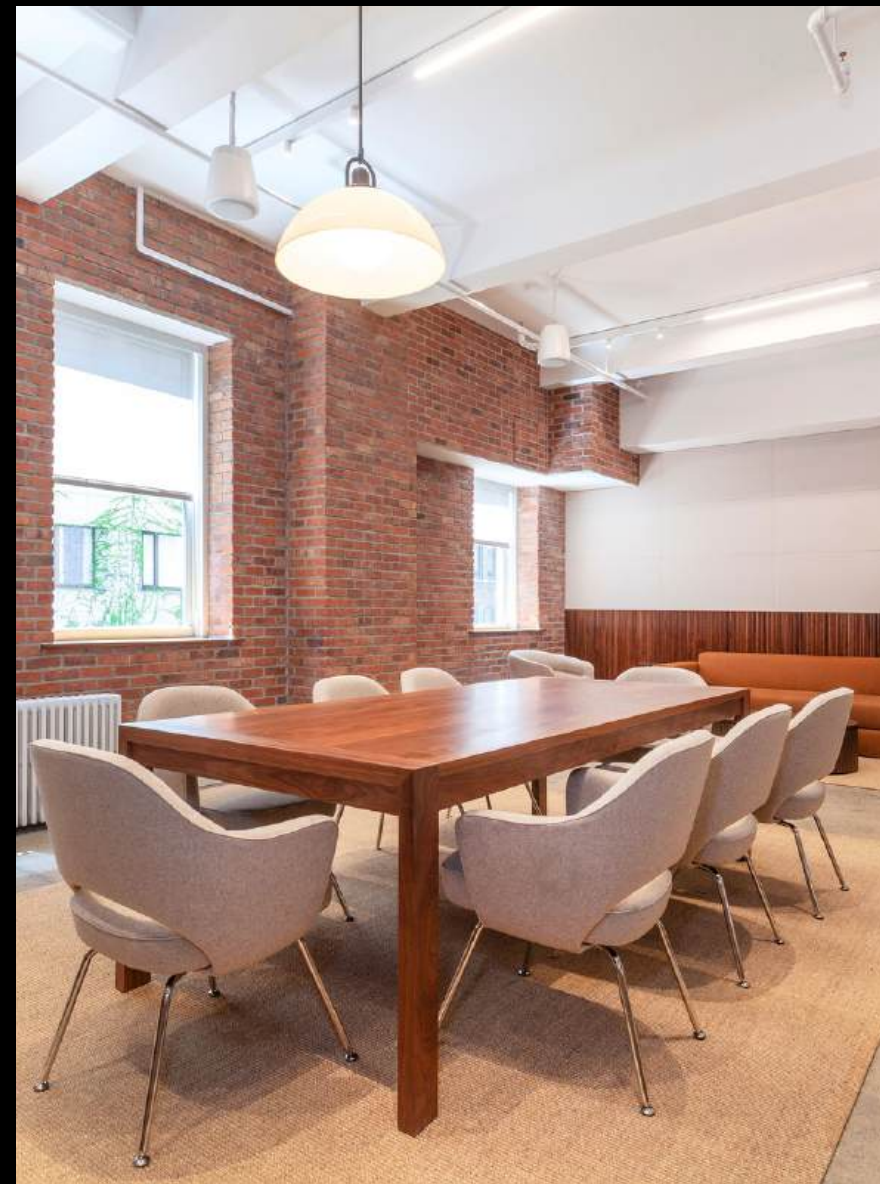
- Brand new building amenity space with: conference room, offices, phone booths, lounge, gym, locker room and shower
- Brand new lobby
- Tenant controlled A/C units

SPACE OVERVIEW

- Partial 6th Floor (West): 6,039 RSF
- Partial 6th Floor (East): 6,009 RSF
- Partial 7th Floor: 5,763 RSF



NEW TENANT AMENITY CENTER



515W20THSTREET

7TH FLOOR EAST

SIZE

7th Floor (East): 5,763 RSF

ASKING RENT

~~\$43 PSF~~ \$37 PSF

TERM

Negotiable

HIGHLIGHTS

- Prebuilt space with 2 glass offices and conference room
- Landlord will build to suit
- Polished concrete floors and exposed brick
- South window exposure facing The Highline
- Amenity space included with conference room, offices, phone booths, lounge, gym, locker room and shower



515W20THSTREET

6TH FLOOR WEST

SIZE

6th Floor (West): 6,039 RSF

ASKING RENT

~~\$43 PSF~~ \$37 PSF

TERM

Negotiable

HIGHLIGHTS

- Landlord will build to suit
- Polished concrete floors and exposed brick
- South window exposure facing The Highline
- Can be combined with East side unit for total of 12,048 RSF
- Amenity space included with conference room, offices, phone booths, lounge, gym, locker room and shower



515W20THSTREET

6TH FLOOR EAST

SIZE

6th Floor (East): 6,009 RSF

ASKING RENT

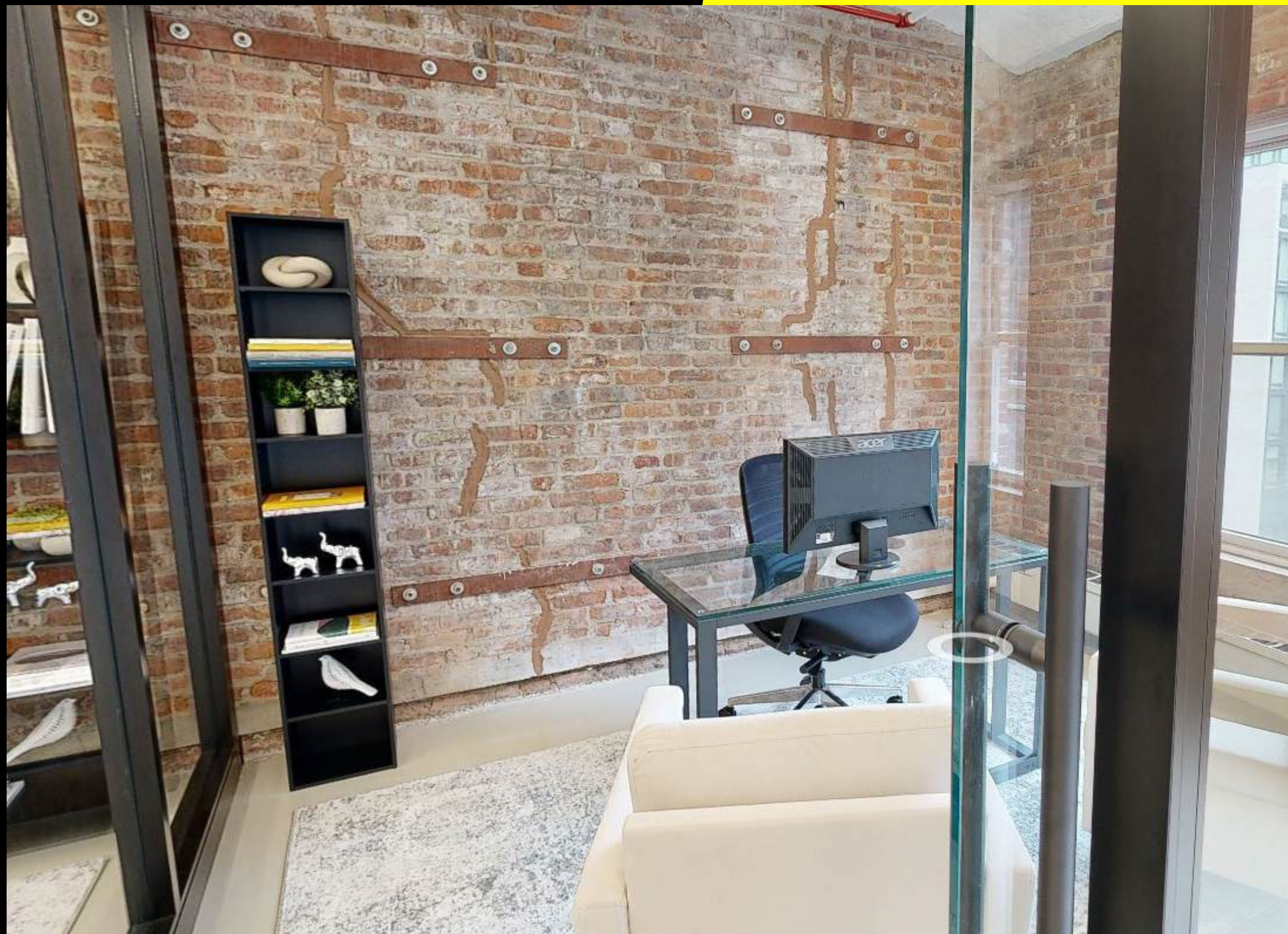
~~\$43 PSF~~ \$37 PSF

TERM

Negotiable

HIGHLIGHTS

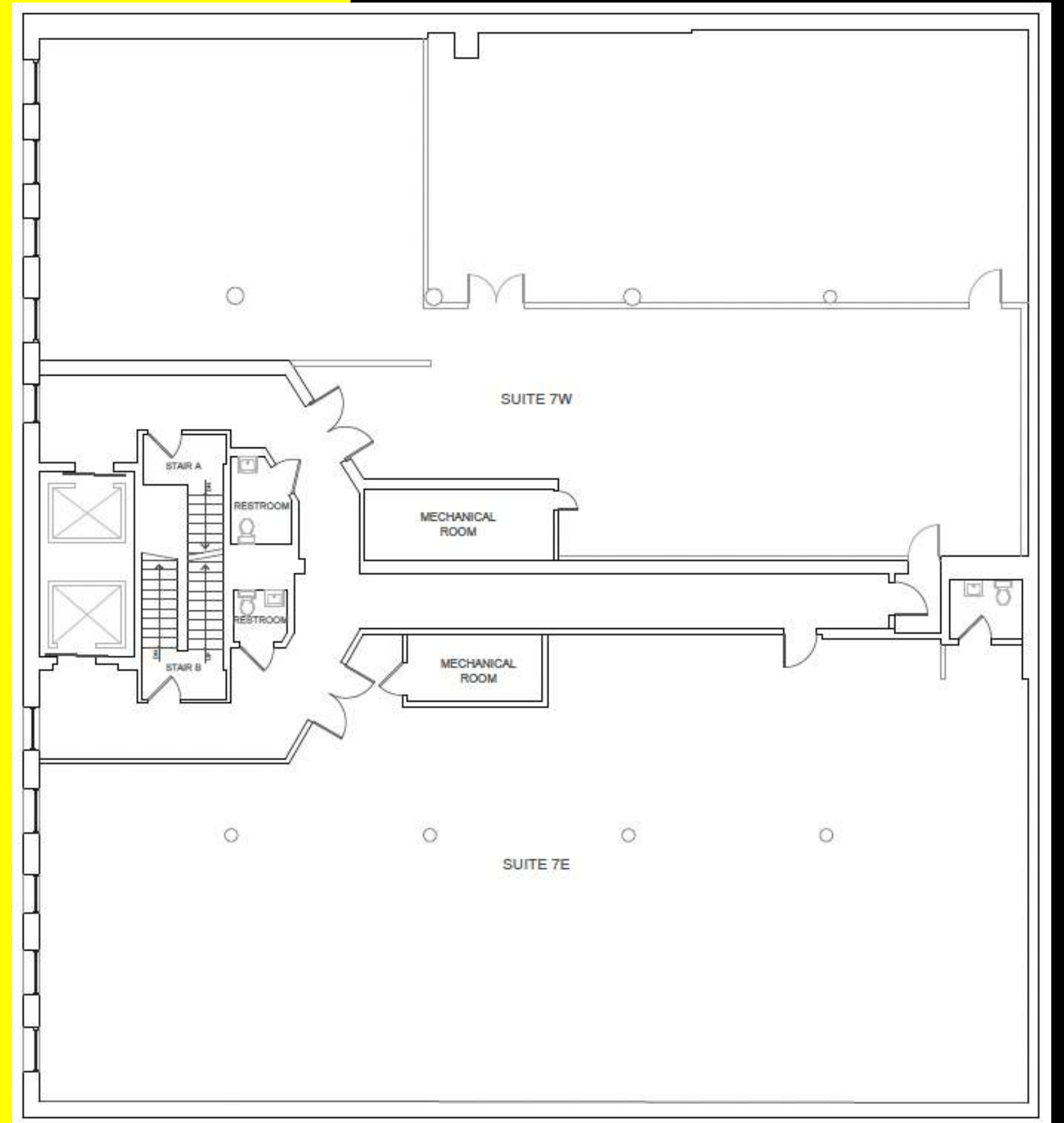
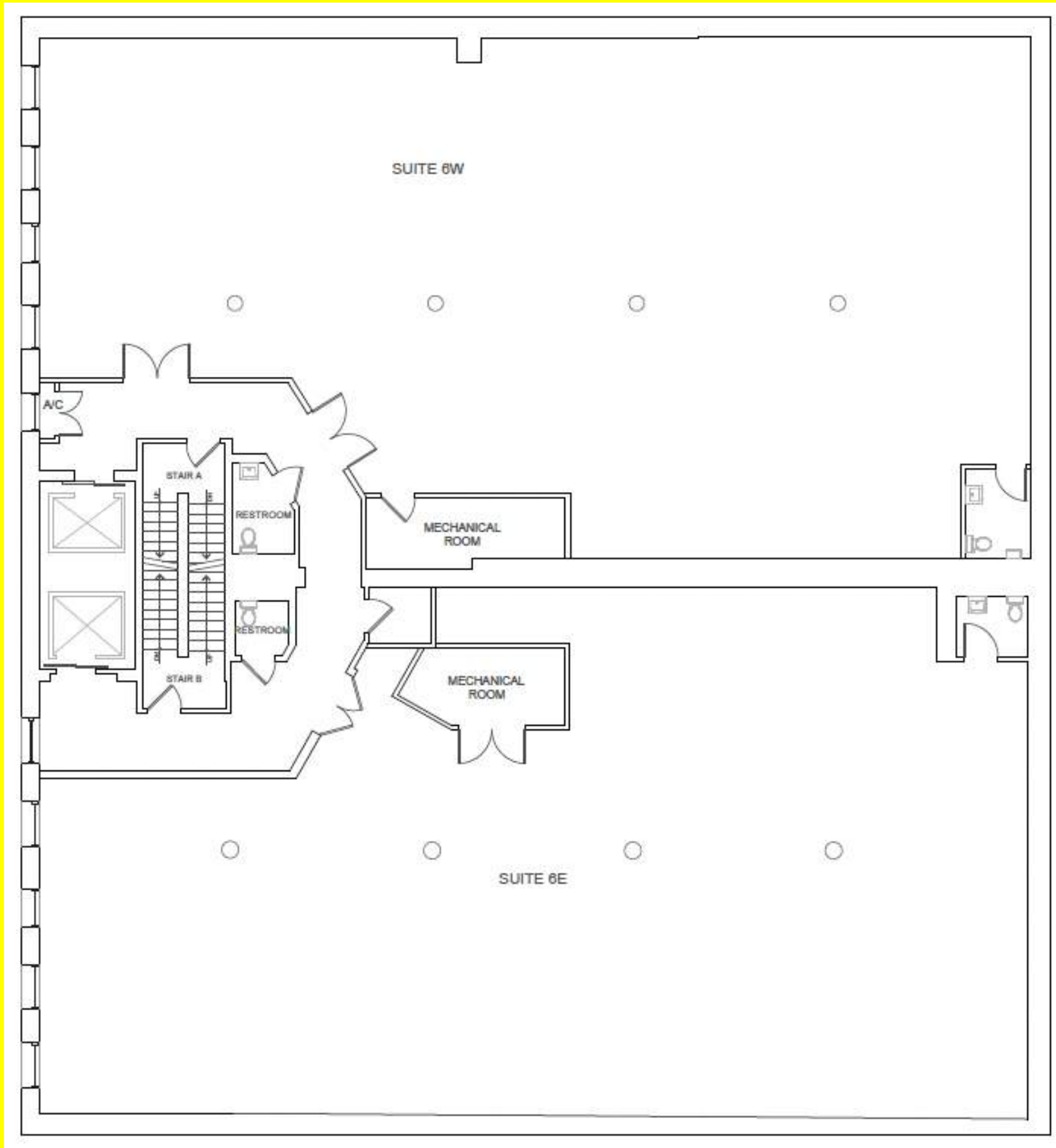
- Landlord will build to suit
- Polished concrete floors and exposed brick
- South window exposure facing The Highline
- Can be combined with East side unit for total of 12,048 RSF
- Amenity space included with conference room, offices, phone booths, lounge, gym, locker room and shower



515W20THSTREET



515W20THSTREET





CONTACT

MICHAEL SEGERMAN
msegerman@currentreadvisors.com
516.297.3337

ROY ABRAHAM
roy@currentreadvisors.com
917.687.9070

CURRENT
Real Estate Advisors