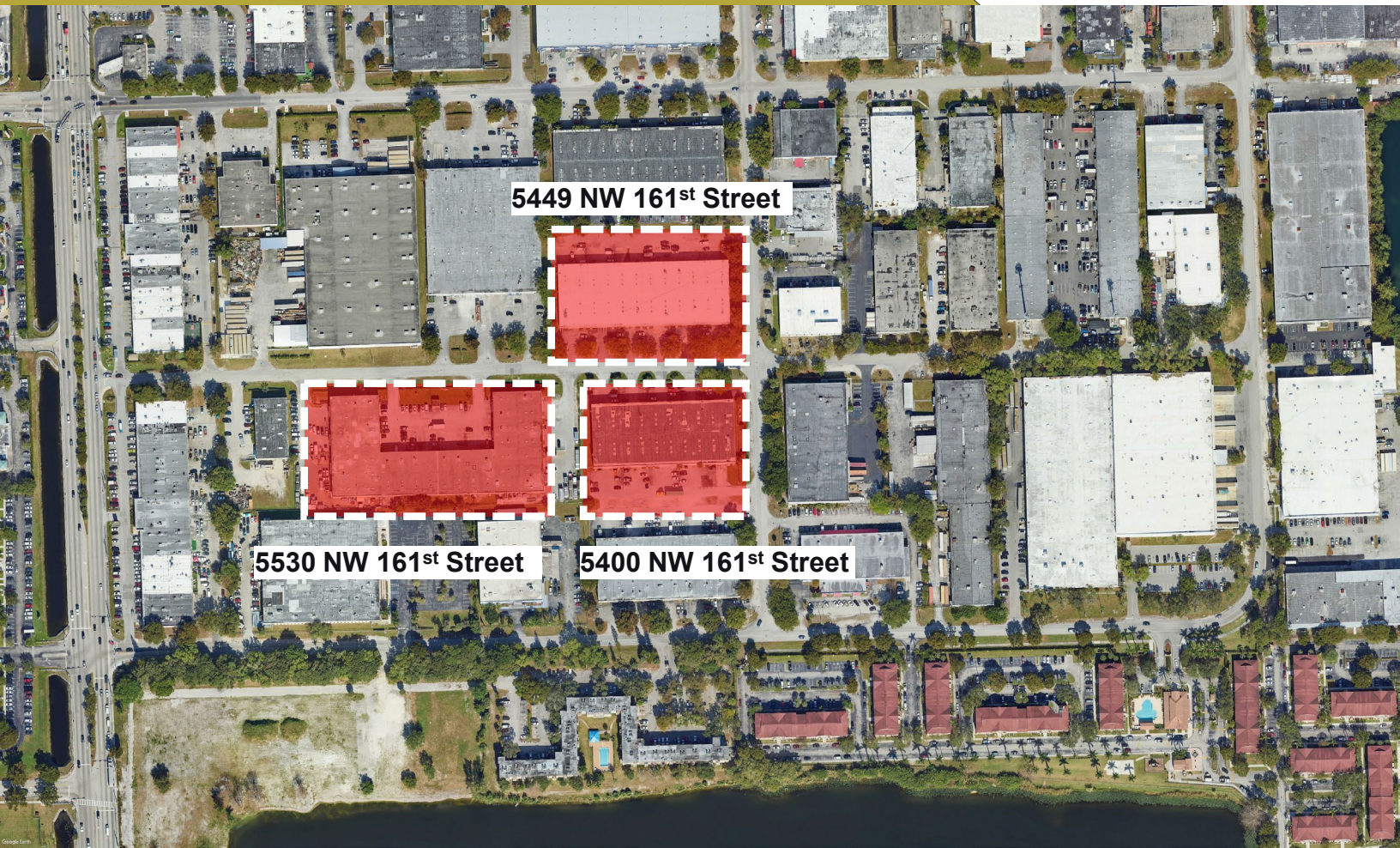


For Lease



Palmetto Lakes Industrial Park

5401-5632 NW 161st Street, Miami, FL

- Space Sizes from 3,072 Sq Ft.
- Dock or Street level

For more information or to schedule a tour please contact:

Will Falero
will.falero@proindustrialre.com
Mobile +1 786 389-3236

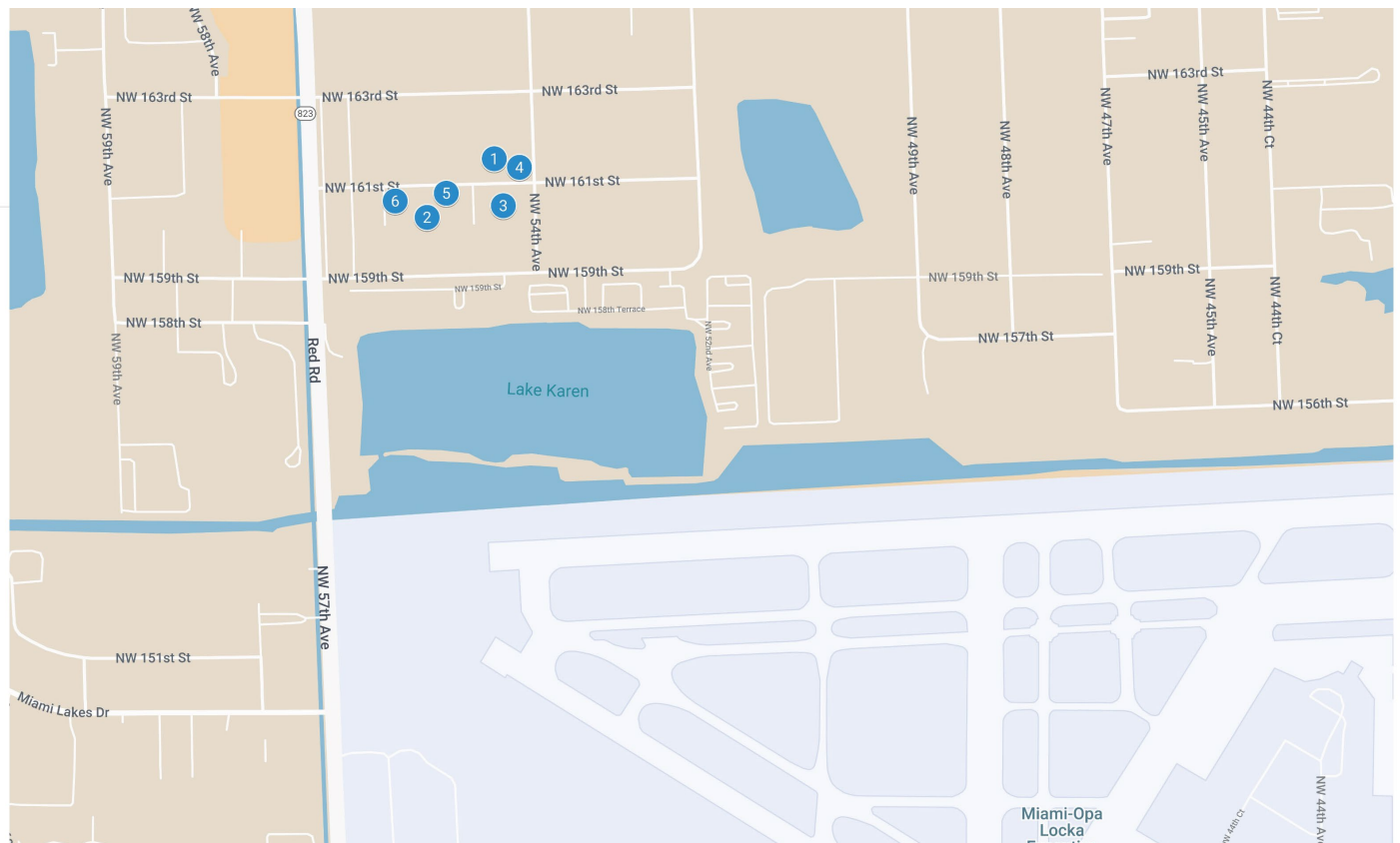
Owned and Managed by:



FOR LEASE

3 – Buildings in Palmetto Lakes Industrial Park

	5400 NW 161 st Street Miami, FL	5449 NW 161 st Street Miami, FL	5530 NW 161 st Street Miami, FL
Building Size	44,800 SF	55,149 SF	74,496 SF
Land	98,881 SF	116,305 SF	174,205 SF
Zoning	IU-1-Industrial, light manufacturing	IU-1-Industrial, light manufacturing	IU-1-Industrial, light manufacturing
Clear Height	20'	20''	20'



Information regarding this property is for informational purposes only. Pro Industrial, LLC does not make any warranty or representation as to the accuracy provided.

AVAILABLE UNITS WITHIN THE 3-BUILDING PORTFOLIO

Address	Size/SF	Loading	Office/SF	Asking Rate	Available
5405 NW 161 st Street	4,480 SF	2 Street Level	500 SF	\$19.00 NNN	Immediate
5445 NW 161 st Street	9,003 SF	4 Street Level	1,800 SF	\$18.00 NNN	Immediate
5450 NW 161 st Street	8,960 SF	3 Street, 1 Dockwell	1,800 SF	\$18.00 NNN	Immediate
5409-5425 NW 161 st St	18,196 SF	3 Street, 1 Dockwell	2,000 SF	\$17.50 NNN	Immediate
5512 NW 161 st Street	3,520 SF	2 Street Level	1,139 SF	\$21.00 NNN	Immediate
5626 NW 161 st Street	7,040 SF	4 Street Level	990 SF	\$18.00 NNN	Immediate