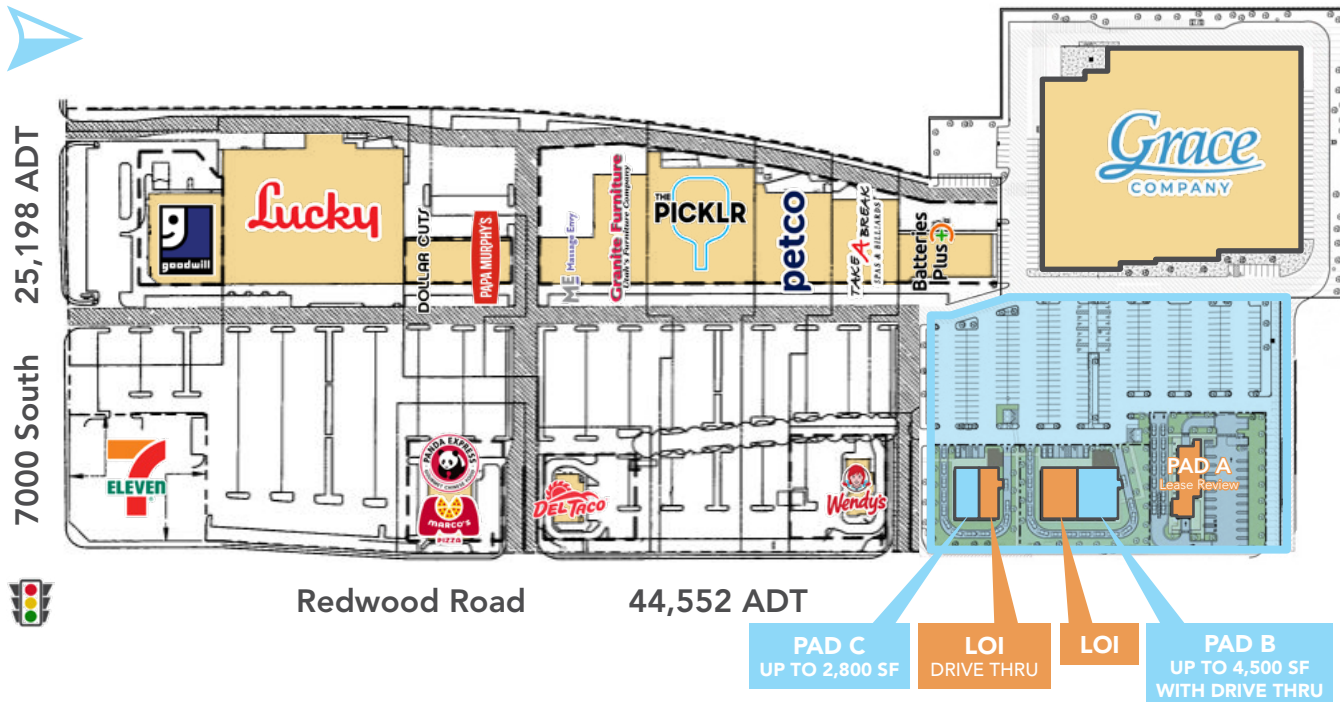


WEST JORDAN PADS

MW

FOR GROUND LEASE OR BUILD-TO-SUIT



PROPERTY DETAILS

6748 SOUTH REDWOOD ROAD
WEST JORDAN, UTAH 84084

- For ground lease or build to suit
- 1,200–2,800 SF available with drive thru
- Two pads available on Redwood Road
- Redwood Road: 44,552 ADT
- Full turning access

ANCHORED BY:



2024 DEMOS

EST. POPULATION

1 MILE » 16,009
3 MILE » 127,706
5 MILE » 387,384

EST. HOUSEHOLDS

1 MILE » 5,507
3 MILE » 45,023
5 MILE » 136,700

EST. MEDIAN HH INCOME

1 MILE » \$98,029
3 MILE » \$92,094
5 MILE » \$90,271



MOUNTAIN WEST
COMMERCIAL REAL ESTATE

KATIE MIKULA

kmikula@mwcre.com
direct 801.704.1667
[View Profile](#)

NICK CLARK

nclark@mwcre.com
direct 801.704.1668
[View Profile](#)

FULL SERVICE COMMERCIAL REAL ESTATE

312 East South Temple
Salt Lake City, UT 84111
Office 801.456.8800
www.mwcre.com

WEST JORDAN PADS

MW

SITE PLAN



PAD C
UP TO 2,800 SF

LOI
DRIVE THRU

LOI

PAD B
UP TO 4,500 SF
WITH DRIVE THRU

Redwood Road 44,552 ADT



MOUNTAIN WEST
COMMERCIAL REAL ESTATE

KATIE MIKULA

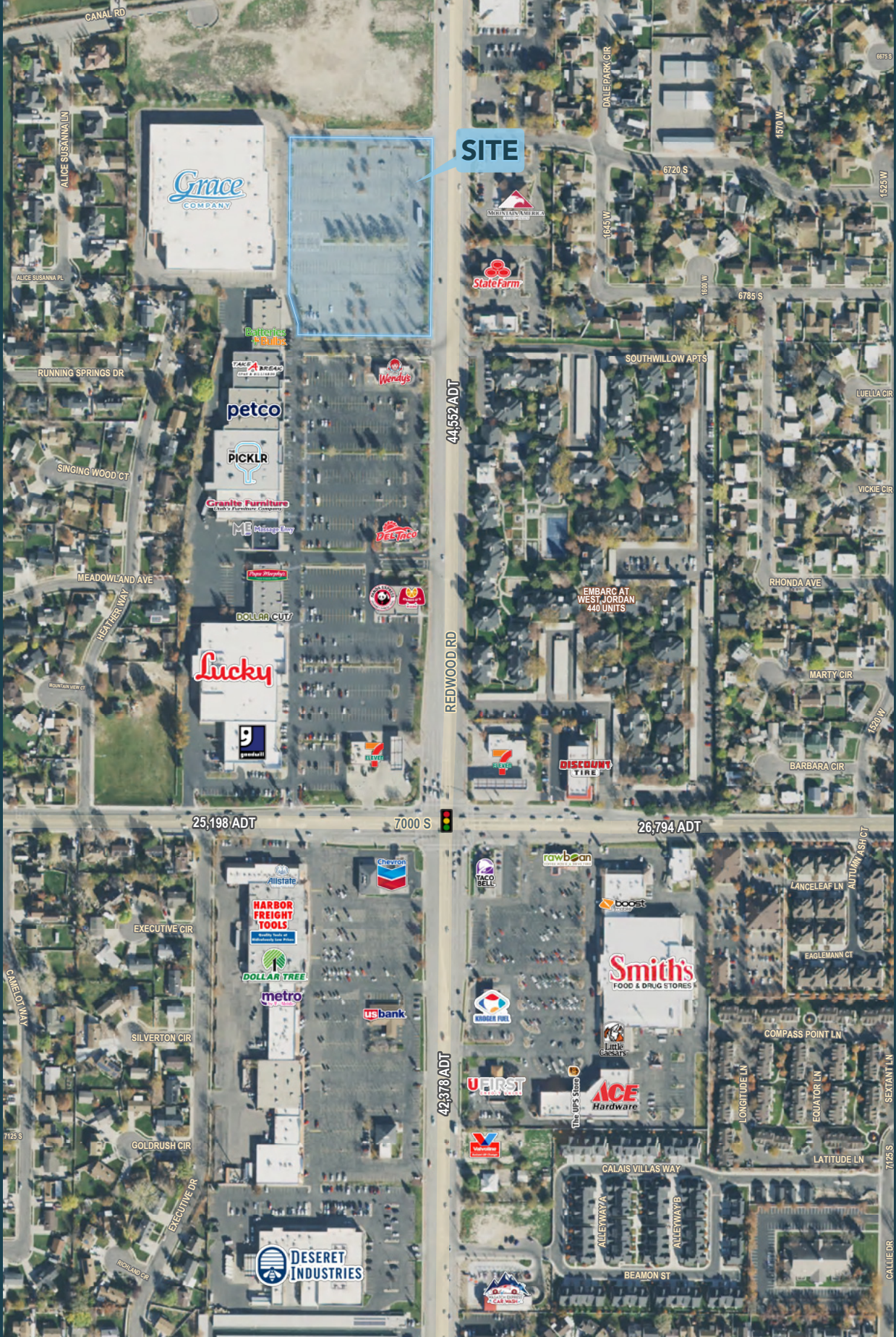
kmikula@mwcre.com
direct 801.704.1667
[View Profile](#)

NICK CLARK

nclark@mwcre.com
direct 801.704.1668
[View Profile](#)

**FULL SERVICE
COMMERCIAL REAL ESTATE**

312 East South Temple
Salt Lake City, UT 84111
Office 801.456.8800
www.mwcre.com



SITE



MOUNTAIN WEST
COMMERCIAL REAL ESTATE

KATIE MIKULA

kmikula@mwcre.com
direct 801.704.1667
[View Profile](#)

NICK CLARK

nclark@mwcre.com
direct 801.704.1668
[View Profile](#)

**FULL SERVICE
COMMERCIAL REAL ESTATE**

312 East South Temple
Salt Lake City, UT 84111
Office 801.456.8800
www.mwcre.com