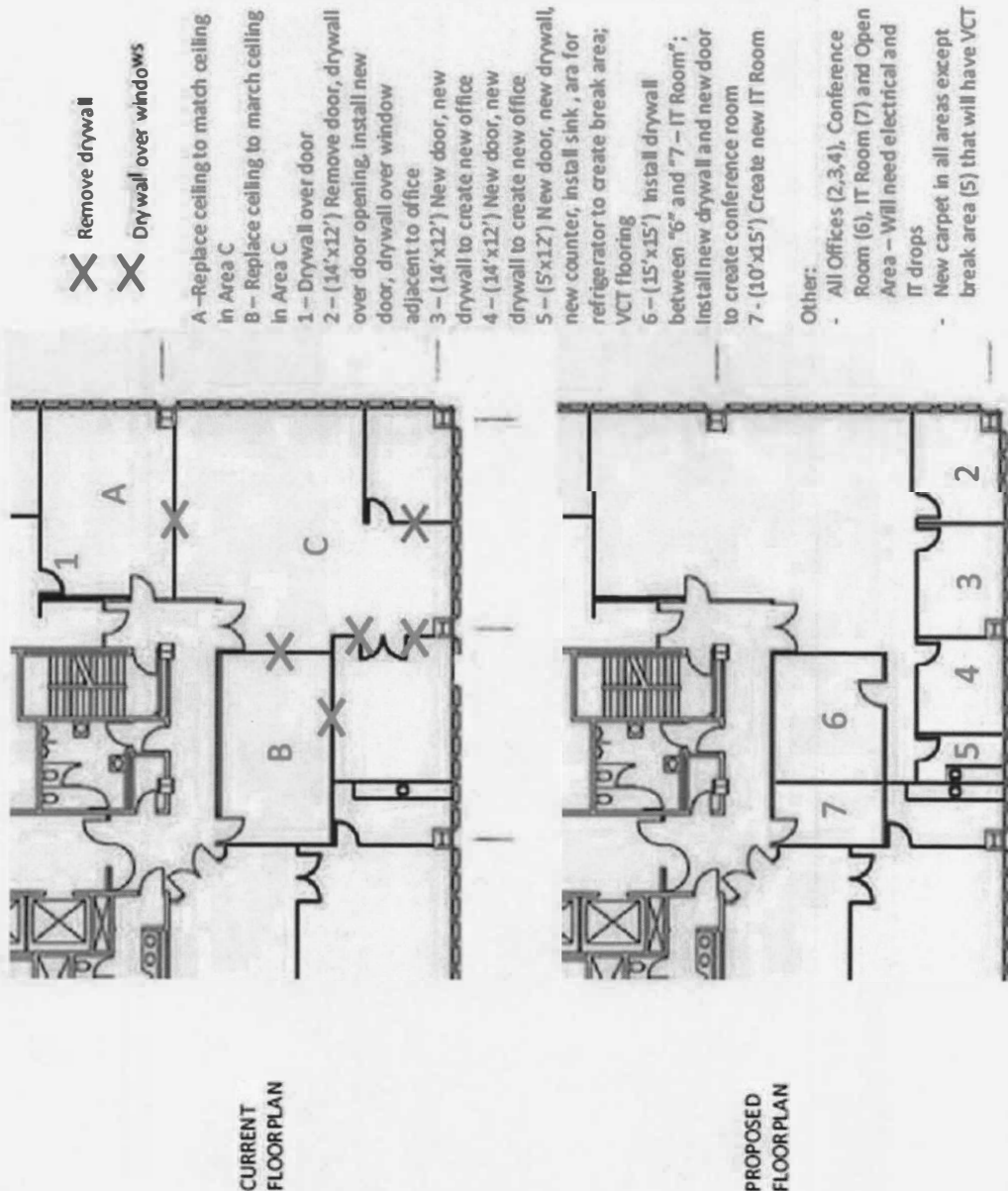


EXHIBIT D

Attached To and Forming a Part Of the Lease Agreement dated **August 2, 2018**, (for references purposes only) BY AND BETWEEN, **International Church of the Foursquare Gospel**, LESSOR, and **Express RX, Inc., a California Corporation**, LESSEE.

LESSOR'S WORK

Lessor, at Lessor expense and prior to Lease Commencement, shall cause to be performed those improvements (the "Landlord's Work") to the Premises which are specifically described in the Preliminary Plan as follows where office measurements are approximations:



LESSOR'S INITIAL

LESSEE'S INITIALS