

FOR LEASE

4,928 - 7,964 SF



9920 CORPORATE CAMPUS DR

LOUISVILLE, KY 40223

PROPERTY HIGHLIGHTS

Walk to nearby dining, retail and hotels from this prestigious Class A office building. The Corporate Campus professional office campus has a park-like setting, beautiful landscaping and includes a courtyard for tenants and their employees. Just minutes from I-64, I-264 and I-265.

Building Size: 70,417 sf

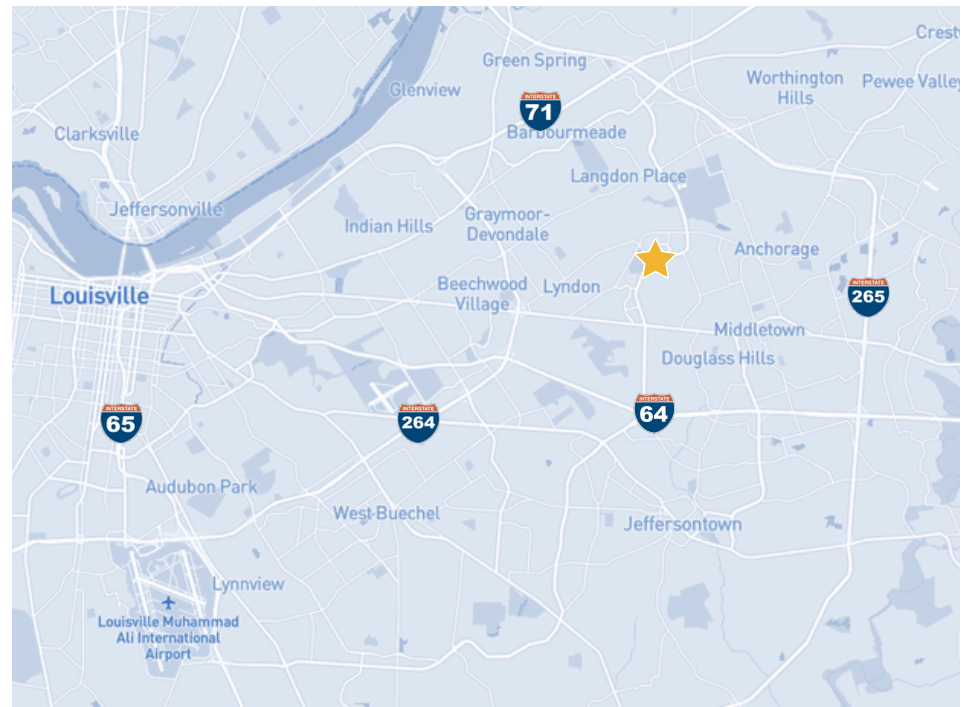
Space Available:
Suite 1500: 7,964 sf
Suite 2600: 4,928 sf

Zoning: PRO

Year Built: 1998

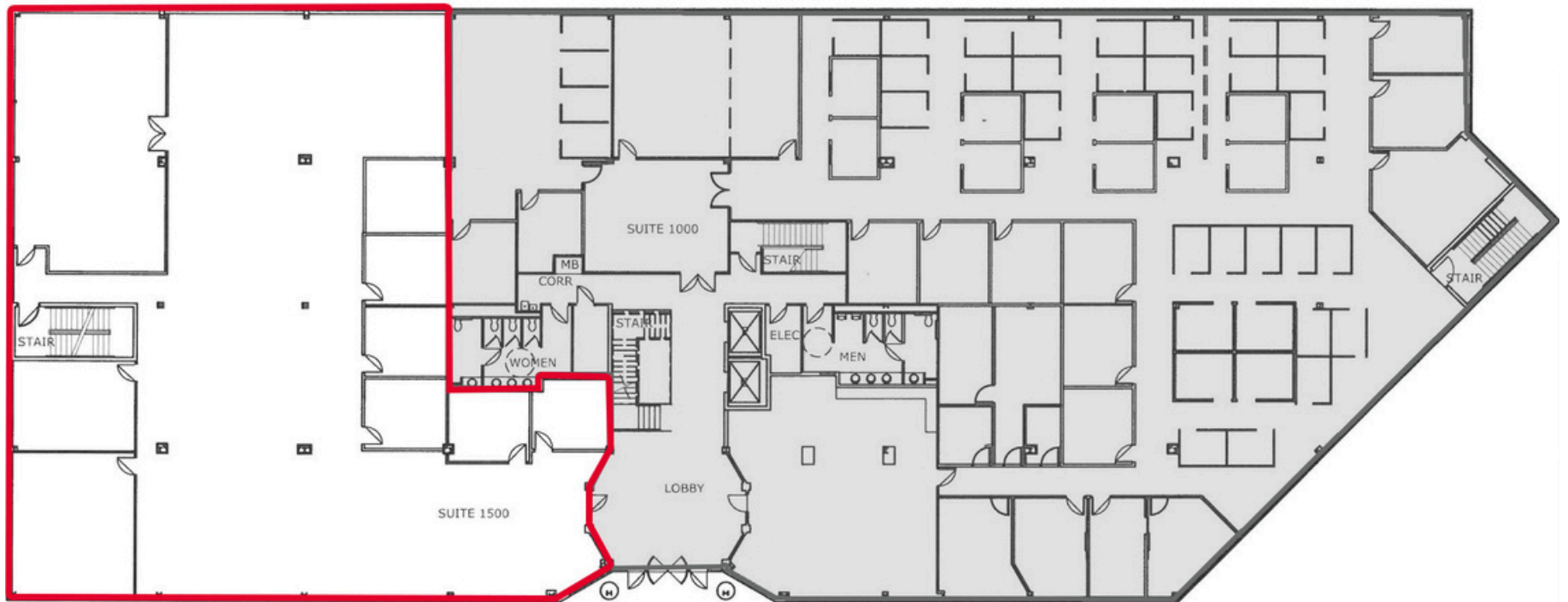
Class: Class A

Parking Ratio: 4/1,000 sf

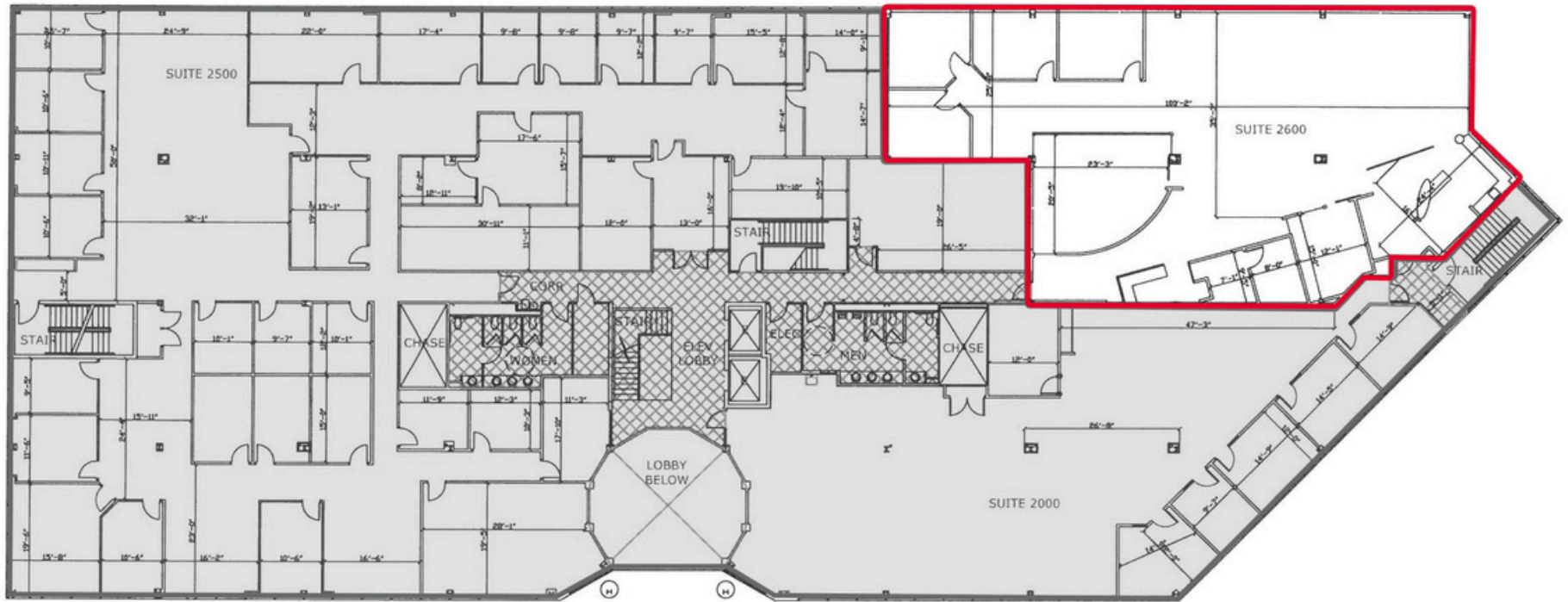




PROPERTY LOCATION



SUITE 1500
7,964 SF



SUITE 2600
4,928 SF

CONTACT INFORMATION

E.P. SCHERER

Senior Director

epscherer@commercialkentucky.com

+1 502 719 3234

SAM GRAY

Senior Associate

samgray@commercialkentucky.com

+1 502 719 3240

