



Tulsa Land For Sale

MCP MCGRAW
COMMERCIAL
PROPERTIES

NEIL DAILEY, SIOR
Executive Vice President
918.853.7337
ndailey@mcgrawcp.com

KALVIN BURGHOFF
Vice President
832.689.7095
kburghoff@mcgrawcp.com

DAKOTA BRASHER
Sales Associate
918.948.5778
dbrasher@mcgrawcp.com

NE Corner - Highway 169 &
Pine St, Tulsa, OK 74116

Table of Contents

CONFIDENTIALITY & DISCLAIMER

All materials and information received or derived from MCP - McGraw Commercial Properties its directors, officers, agents, advisors, affiliates and/or any third party sources are provided without representation or warranty as to completeness, veracity, or accuracy, condition of the property, compliance or lack of compliance with applicable governmental requirements, developability or suitability, financial performance of the property, projected financial performance of the property for any party's intended use or any and all other matters.

Neither MCP - McGraw Commercial Properties its directors, officers, agents, advisors, or affiliates makes any representation or warranty, express or implied, as to accuracy or completeness of the any materials or information provided, derived, or received. Materials and information from any source, whether written or verbal, that may be furnished for review are not a substitute for a party's active conduct of its own due diligence to determine these and other matters of significance to such party. MCP - McGraw Commercial Properties will not investigate or verify any such matters or conduct due diligence for a party unless otherwise agreed in writing.

EACH PARTY SHALL CONDUCT ITS OWN INDEPENDENT INVESTIGATION AND DUE DILIGENCE.

Any party contemplating or under contract or in escrow for a transaction is urged to verify all information and to conduct their own inspections and investigations including through appropriate third party independent professionals selected by such party. All financial data should be verified by the party including by obtaining and reading applicable documents and reports and consulting appropriate independent professionals. MCP - McGraw Commercial Properties makes no warranties and/or representations regarding the veracity, completeness, or relevance of any financial data or assumptions. MCP - McGraw Commercial Properties does not serve as a financial advisor to any party regarding any proposed transaction. All data and assumptions regarding financial performance, including that used for financial modeling purposes, may differ from actual data or performance. Any estimates of market rents and/or projected rents that may be provided to a party do not necessarily mean that rents can be established at or increased to that level. Parties must evaluate any applicable contractual and governmental limitations as well as market conditions, vacancy factors and other issues in order to determine rents from or for the property.

Legal questions should be discussed by the party with an attorney. Tax questions should be discussed by the party with a certified public accountant or tax attorney. Title questions should be discussed by the party with a title officer or attorney. Questions regarding the condition of the property and whether the property complies with applicable governmental requirements should be discussed by the party with appropriate engineers, architects, contractors, other consultants and governmental agencies. All properties and services are marketed by MCP - McGraw Commercial Properties in compliance with all applicable fair housing and equal opportunity laws.

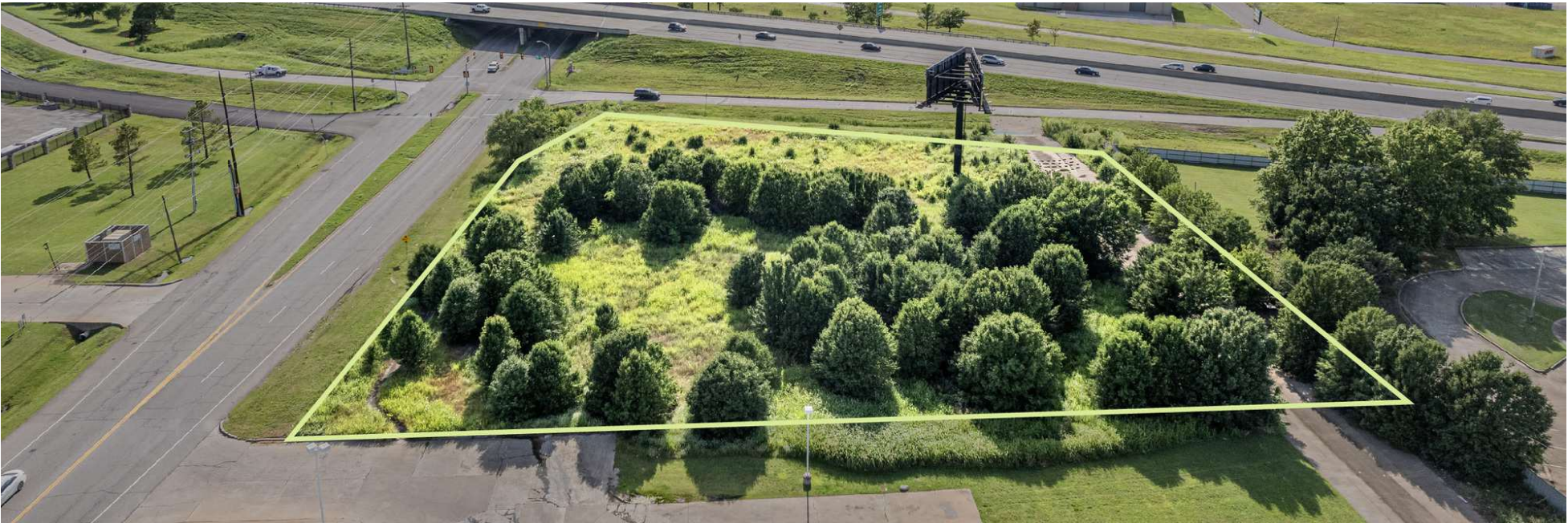
TABLE OF CONTENTS

PROPERTY INFORMATION	3
PROPERTY SUMMARY	4
ADDITIONAL PHOTOS	5
SITE PLANS	6
LOCATION INFORMATION	7
LOCATION MAP	8
AERIAL MAP	9
DEMOGRAPHICS MAP & REPORT	10
MEET THE TEAM	11

PROPERTY



INFORMATION



PROPERTY DESCRIPTION

Unique opportunity to own prime vacant land at one of Tulsa's most strategic and high-traffic locations. This +/- 1.96-acre parcel is situated at the bustling northeast corner of Highway 169 and Pine Street, offering unparalleled visibility and accessibility.

Prime Location:

High Visibility: Positioned at a major intersection with highway frontage, the property benefits from significant daily traffic flow, making it ideal for commercial ventures.

Easy Access: Direct access to Highway 169 ensures smooth connectivity to the rest of Tulsa and surrounding areas, enhancing the convenience for potential customers or clients.

Commercial Potential:

Versatile Use: Perfect for a variety of commercial developments including retail stores, restaurants, gas stations, or office spaces.

Growth Area: Located in a rapidly developing area of Tulsa along the highway 169 corridor, providing an excellent opportunity for investment as the region continues to grow.

PROPERTY HIGHLIGHTS

- +/- 1.96 Acres
- Zoning: CG (Commercial General)
- Traffic Counts: ~75,000/per day from Highway 169 (AADT 2022)
- FEMA Flood Zone: Zone X (Minimal Flood Hazard)

OFFERING SUMMARY

Sale Price:	\$595,000
Lot Size:	1.96 Acres

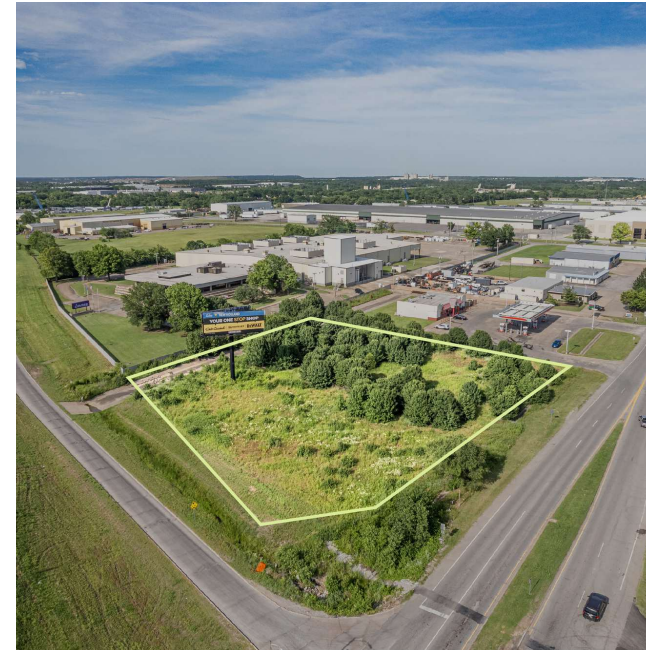
INVESTMENT OPPORTUNITY

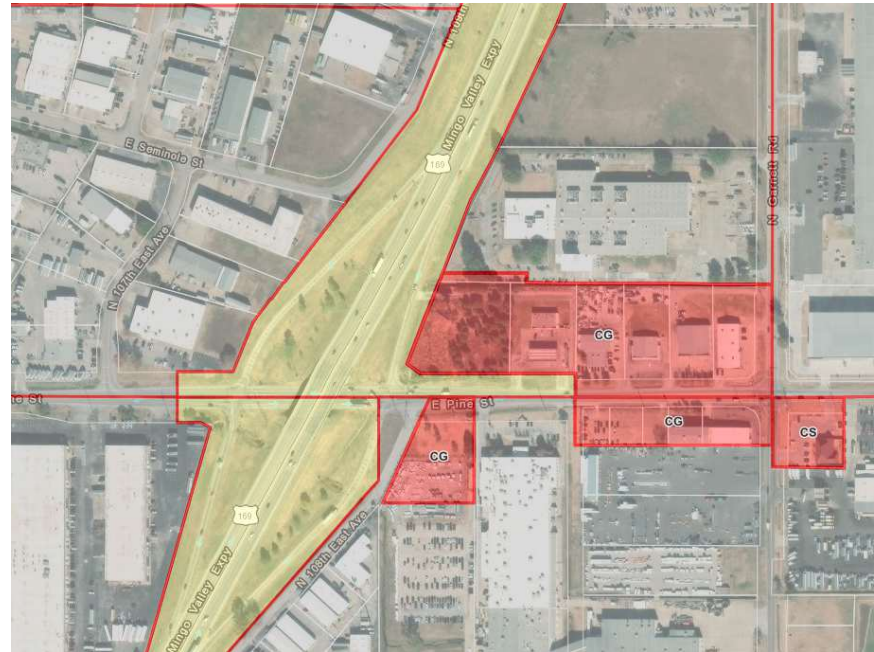
High ROI Potential: Given its strategic location and growing surroundings, this land offers excellent potential for high returns on investment.

Future Development: As Tulsa expands, properties in prime locations like this are poised for significant value appreciation.

Don't miss this exceptional opportunity to secure a prime piece of Tulsa real estate. Contact us today to schedule a viewing and take the first step towards making this valuable property the cornerstone of your business success!

Additional Photos





FEMA - NFHL (National Flood Hazard Layer)

FIRM Panels



Cross-Sections



Flood Hazard Boundaries

Limit Lines



NP



SFHA / Flood Zone Boundary



Flowage Easement Boundary



Flood Hazard Zones

1% Annual Chance Flood Hazard



Regulatory Floodway



Special Floodway



Area of Undetermined Flood Hazard



0.2% Annual Chance Flood Hazard



Future Conditions 1% Annual Chance Flood Hazard



Area with Reduced Risk Due to Levee



Area with Risk Due to Levee

LOCATION



INFORMATION

Location Map



Aerial Map

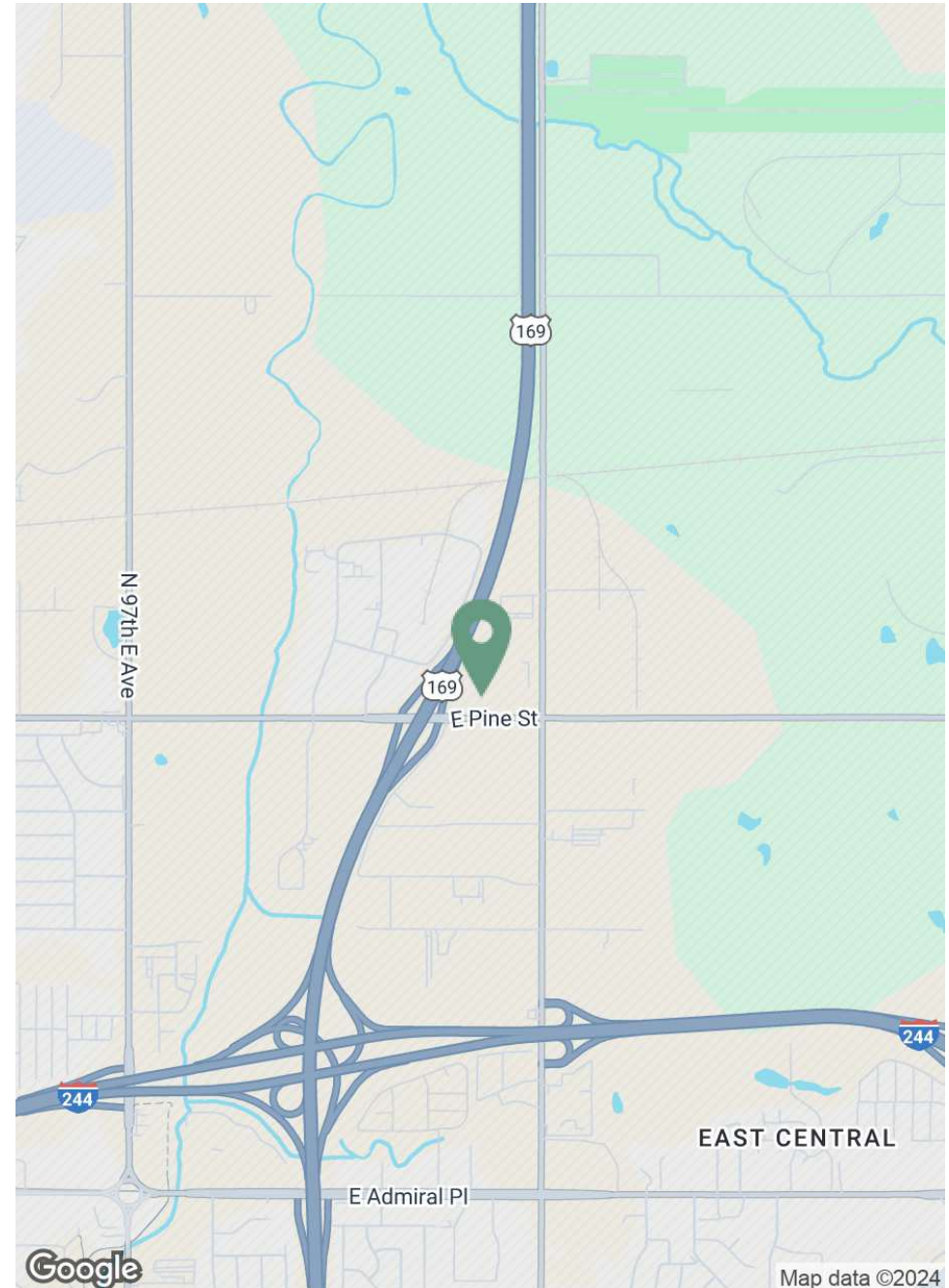


Demographics Map & Report

POPULATION	1 MILE	3 MILES	5 MILES
Total Population	874	32,066	118,753
Average Age	36	36	36
Average Age (Male)	36	35	36
Average Age (Female)	36	37	37

HOUSEHOLDS & INCOME	1 MILE	3 MILES	5 MILES
Total Households	342	11,393	44,664
# of Persons per HH	2.6	2.8	2.7
Average HH Income	\$73,906	\$60,091	\$61,914
Average House Value	\$184,485	\$143,632	\$166,073

Demographics data derived from AlphaMap



Meet the Team



NEIL DAILEY, SIOR

Executive Vice President

Cell: 918.853.7337
ndailey@mcgrawcp.com



KALVIN BURGHOFF

Vice President

Cell: 832.689.7095
kburghoff@mcgrawcp.com



DAKOTA BRASHER

Sales Associate

Cell: 918.948.5778
dbrasher@mcgrawcp.com