

# FOR SUBLEASE

**351-355 Queecreek Circle**

**Smyrna, TN 37167**



- **Size: 4,322 SF**
- **Rent: \$23.50/SF/MG (Includes Taxes, Ins., and CAM)**
- **13 Offices/Exams on ground floor (additional office area upstairs), Reception, Break Room, Admin/Check in-out**
- **Former medical space. Sinks/Cabinets are in storage and can be reinstalled.**
- **Move-in Ready – Excellent Condition!**
- **Term Expires July 31, 2028**

Jay McRae, CCIM  
McRae Commercial Realty  
615-668-1515

[Jay@mcraedevelopment.com](mailto:Jay@mcraedevelopment.com)





This information has been secured from sources we believe to be reliable, but we make no representations or warranties, expressed or implied, as to the accuracy of the information. References to square footage or age are approximate. Buyer must verify the information and bears all risk for any inaccuracies.



This information has been secured from sources we believe to be reliable, but we make no representations or warranties, expressed or implied, as to the accuracy of the information. References to square footage or age are approximate. Buyer must verify the information and bears all risk for any inaccuracies.



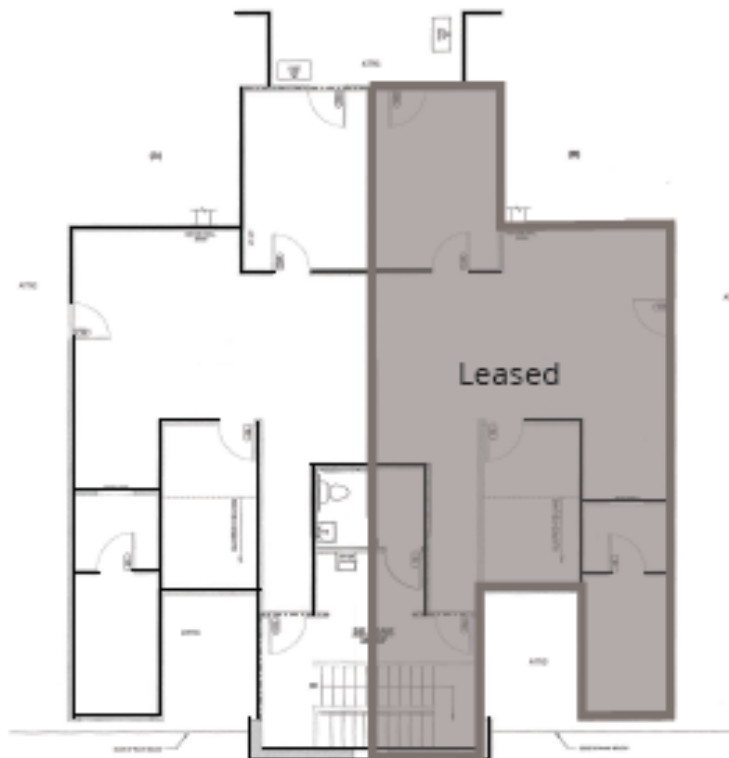


This information has been secured from sources we believe to be reliable, but we make no representations or warranties, expressed or implied, as to the accuracy of the information. References to square footage or age are approximate. Buyer must verify the information and bears all risk for any inaccuracies.

## Ground floor:



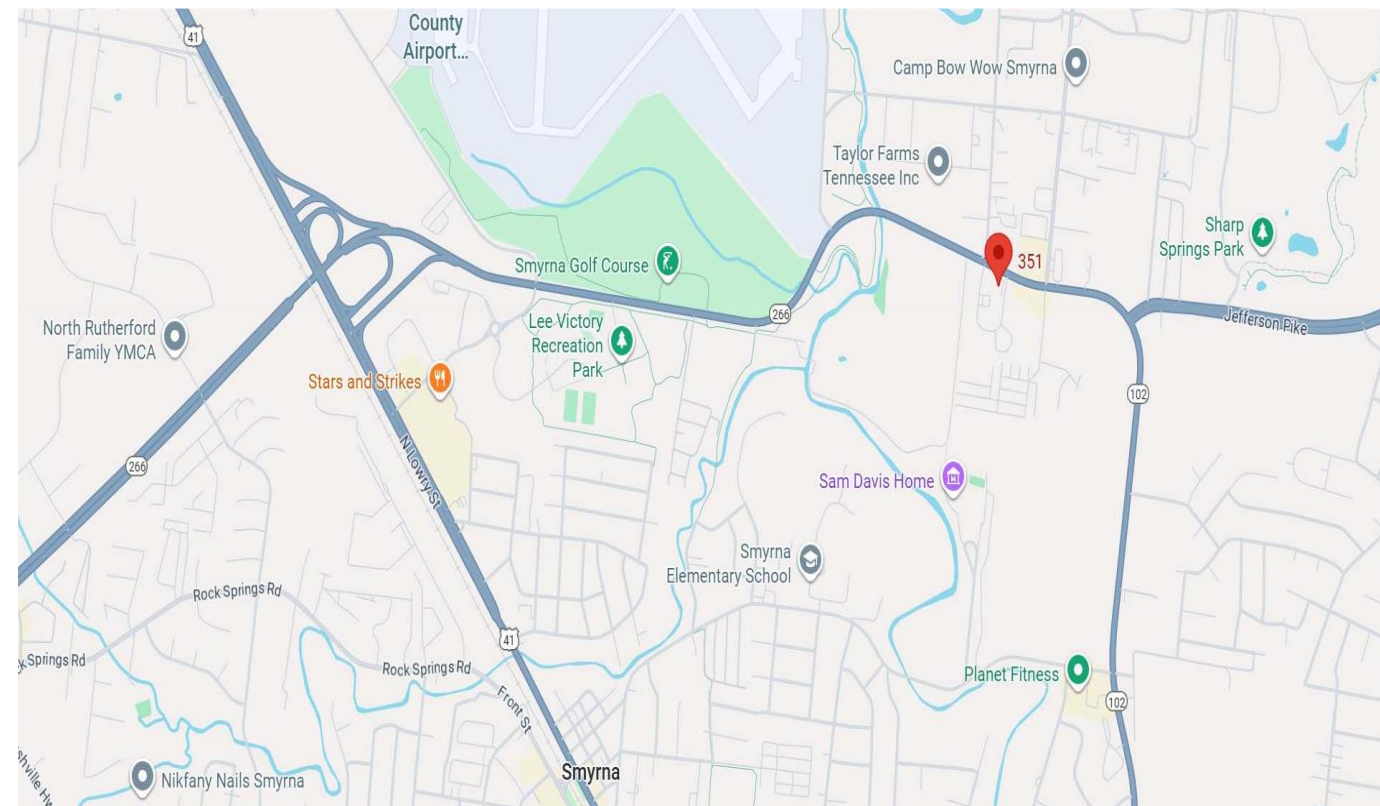
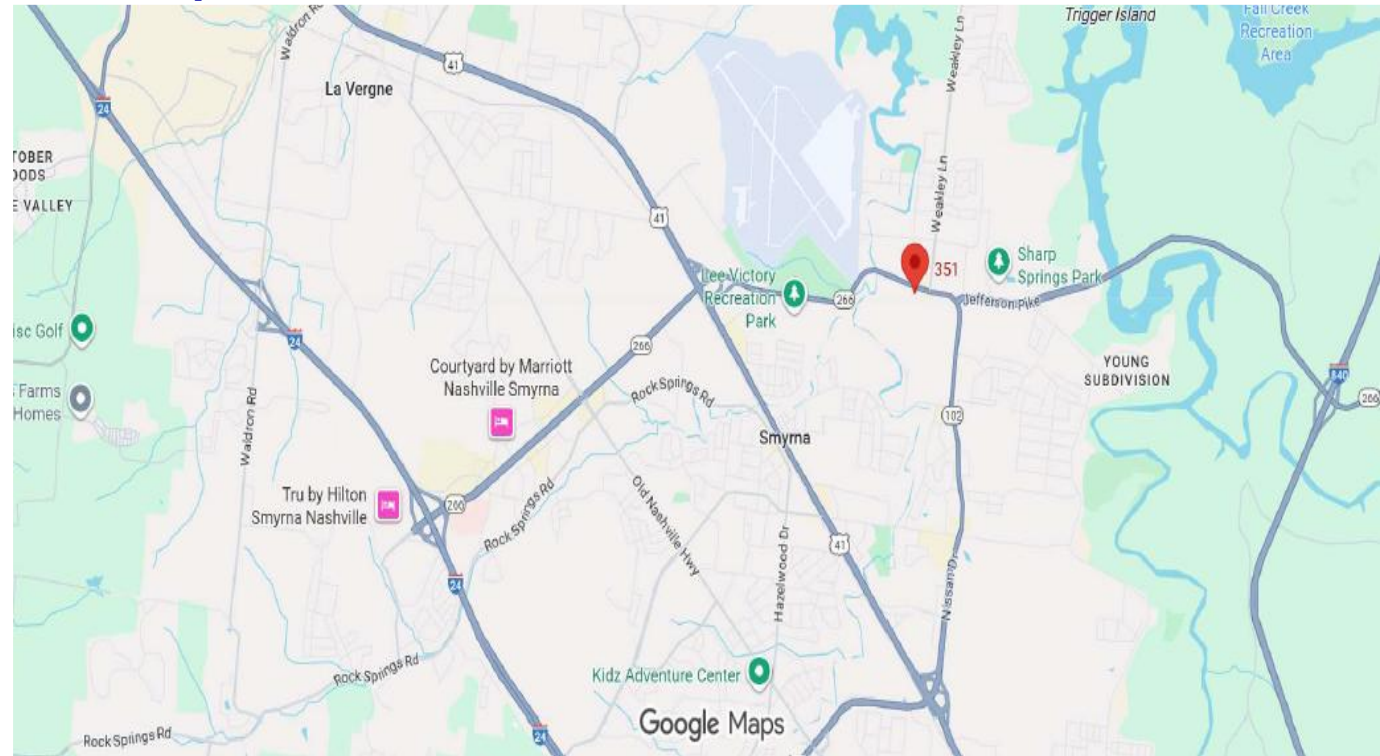
## Second floor:



This information has been secured from sources we believe to be reliable, but we make no representations or warranties, expressed or implied, as to the accuracy of the information. References to square footage or age are approximate. Buyer must verify the information and bears all risk for any inaccuracies.



# Area Maps



This information has been secured from sources we believe to be reliable, but we make no representations or warranties, expressed or implied, as to the accuracy of the information. References to square footage or age are approximate. Buyer must verify the information and bears all risk for any inaccuracies.



# Aerial Photo

