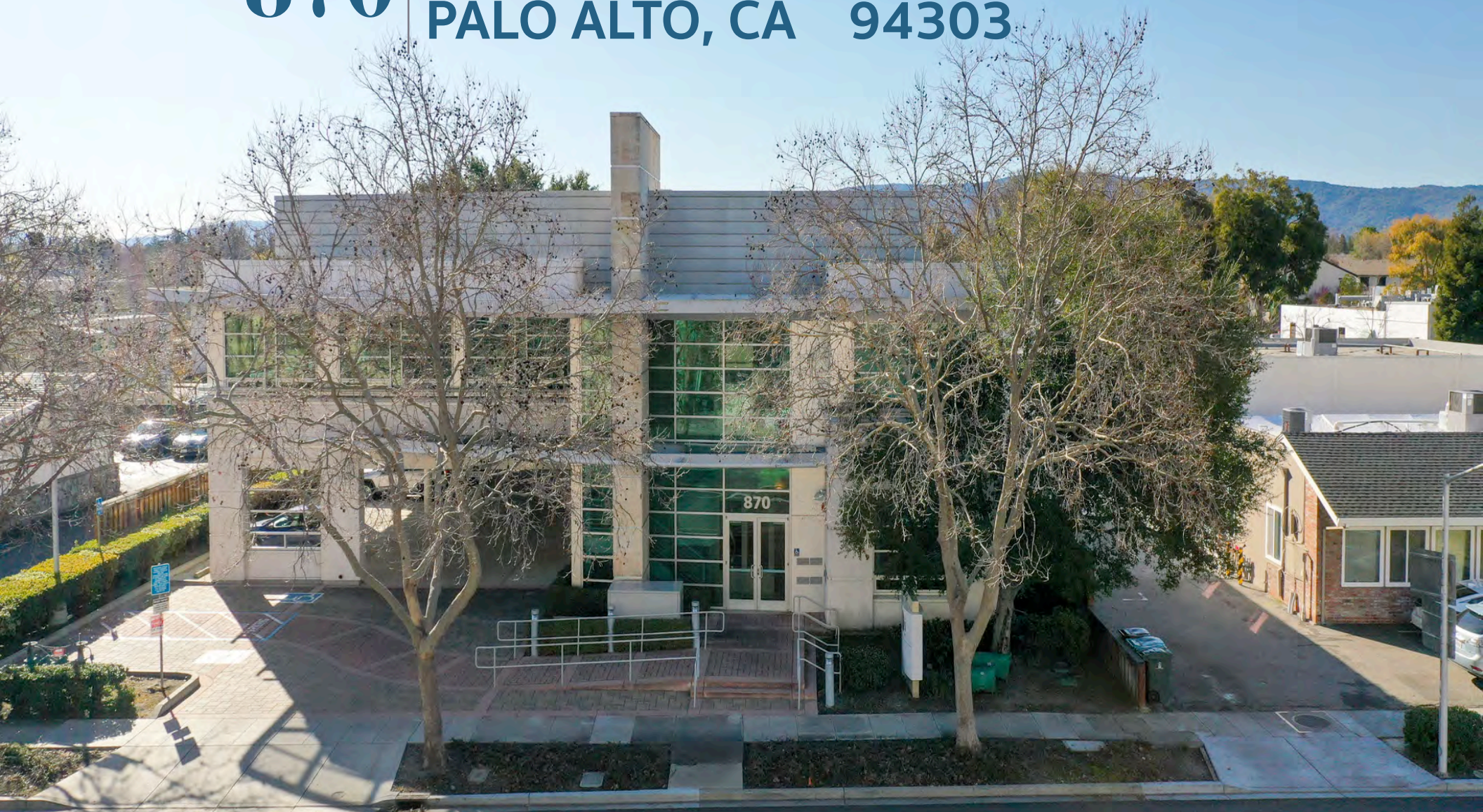


870 | E. CHARLESTON RD PALO ALTO, CA 94303



SUPERIOR CLASS A
OFFICE SPACES
AVAILABLE FOR LEASE

PROPERTY INFORMATION



Easy access to nearby highways and expressways, cutting commute times

Built in 2005

On-site parking, some covered

Impressive, Class A interior to foster collaboration

Prime location, convenient for customers & employees

Drive Times

Highway 101
0.4 mi

Central Expressway
1.3 mi

El Camino Real
1.6 mi

Stanford Shopping Center
4.8 mi

San Jose International Airport
12 mi

The statement with the information it contains is given with the understanding that all negotiations relating to this purchase, renting, or leasing of the property described above shall be conducted through this office. The above information, while not guaranteed, has been secured from sources we believe to be reliable. Offering subject to change.



CURRENT AVAILABILITIES

Buddy Parsons
 President
 408.453.4700x116
 buddy@borelli.com
 LIC. 00754782

Lee Jatta
 Senior Vice President
 408.453.4700x140
 lee@borelli.com
 LIC. 01828564

Abigail Parsons
 Property Manager
 408.453.4700x100
 abigail@borelli.com
 LIC. 02114081

SUITE	SIZE	RATE \$/RSF/MO	PRICE DETAILS
100	1,630 RSF	\$4.58 *	*For the first year of occupancy, the effective Full Service rate is \$4.58 per RSF per month, based on a minimum two-year lease.
210	3,105 RSF	\$4.58 *	*For the first year of occupancy, the effective Full Service rate is \$4.58 per RSF per month, based on a minimum three-year lease.



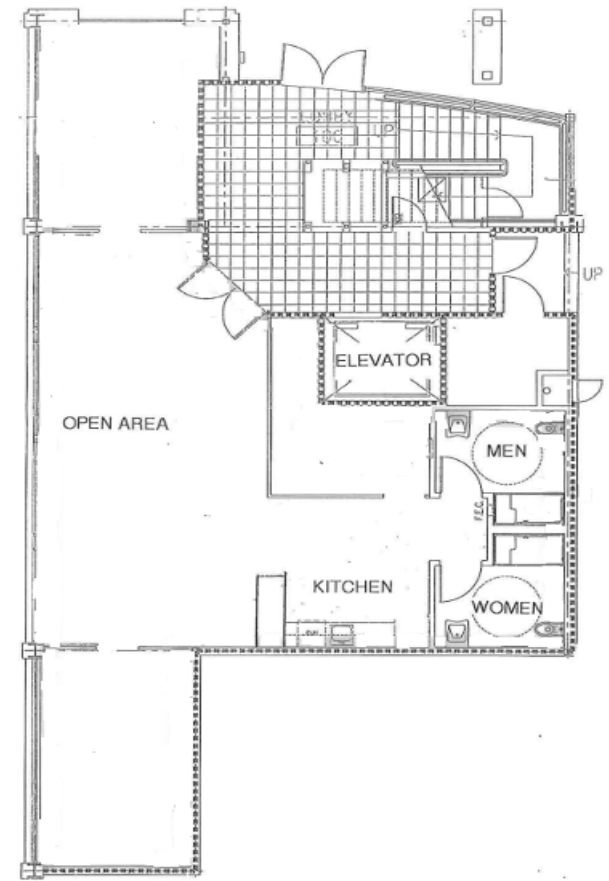
The statement with the information it contains is given with the understanding that all negotiations relating to this purchase, renting, or leasing of the property described above shall be conducted through this office. The above information, while not guaranteed, has been secured from sources we believe to be reliable. Offering subject to change.



SUITE 100

1,630 RSF

- » Class A interiors
- » Double door suite entry
- » One corner executive office with glass door entry
- » One conference room with glass entry door
- » Open office with suspended lighting
- » Storage room
- » Open kitchenette with upper & lower cabinetry
- » Sink, dishwasher, & room for refrigerator
- » Two private restrooms with showers

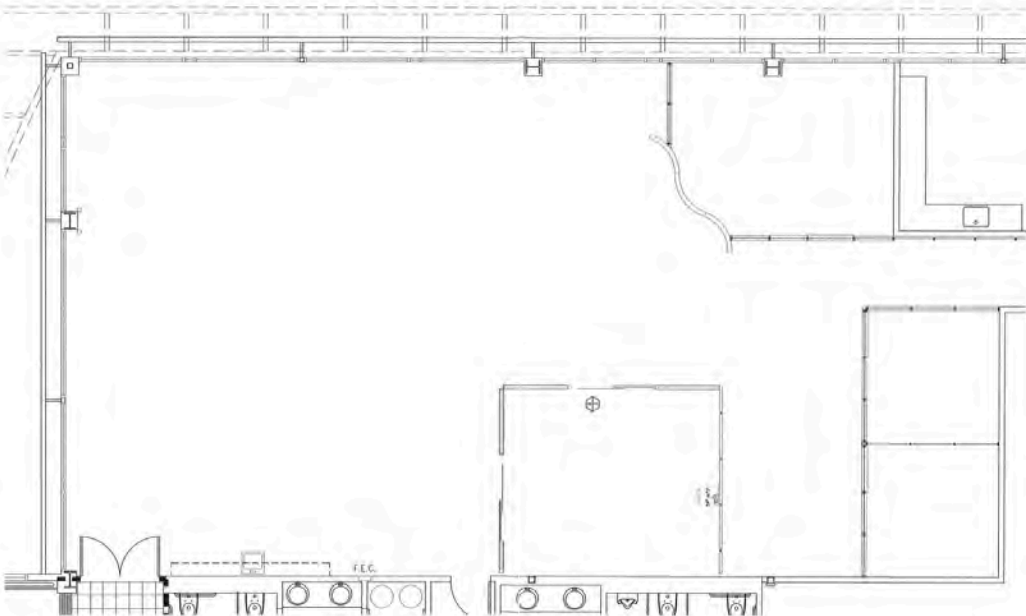
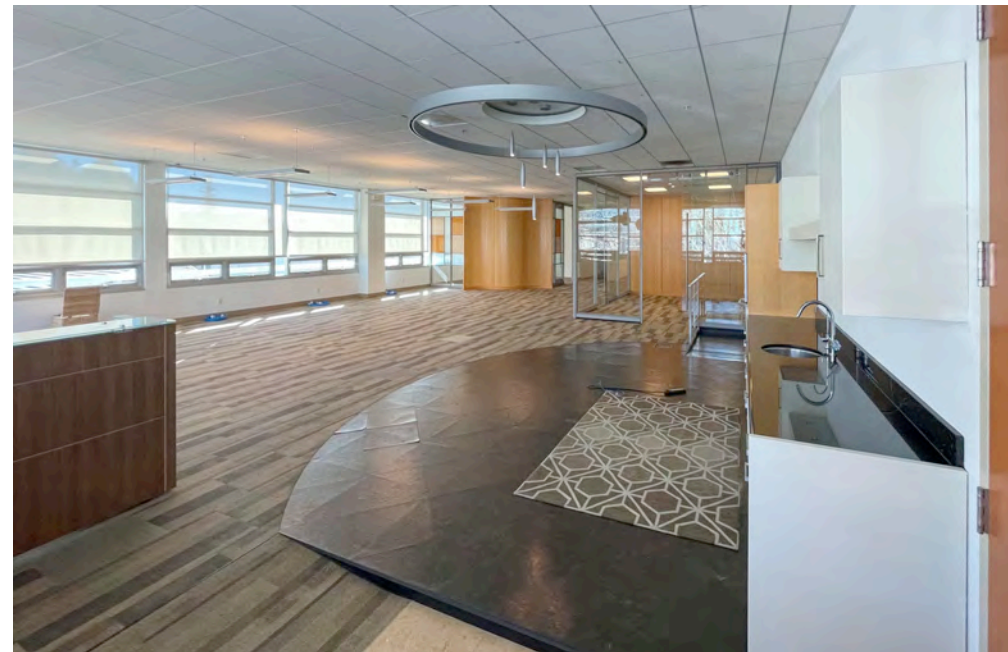


The statement with the information it contains is given with the understanding that all negotiations relating to this purchase, renting, or leasing of the property described above shall be conducted through this office. The above information, while not guaranteed, has been secured from sources we believe to be reliable. Offering subject to change.

SUITE 210

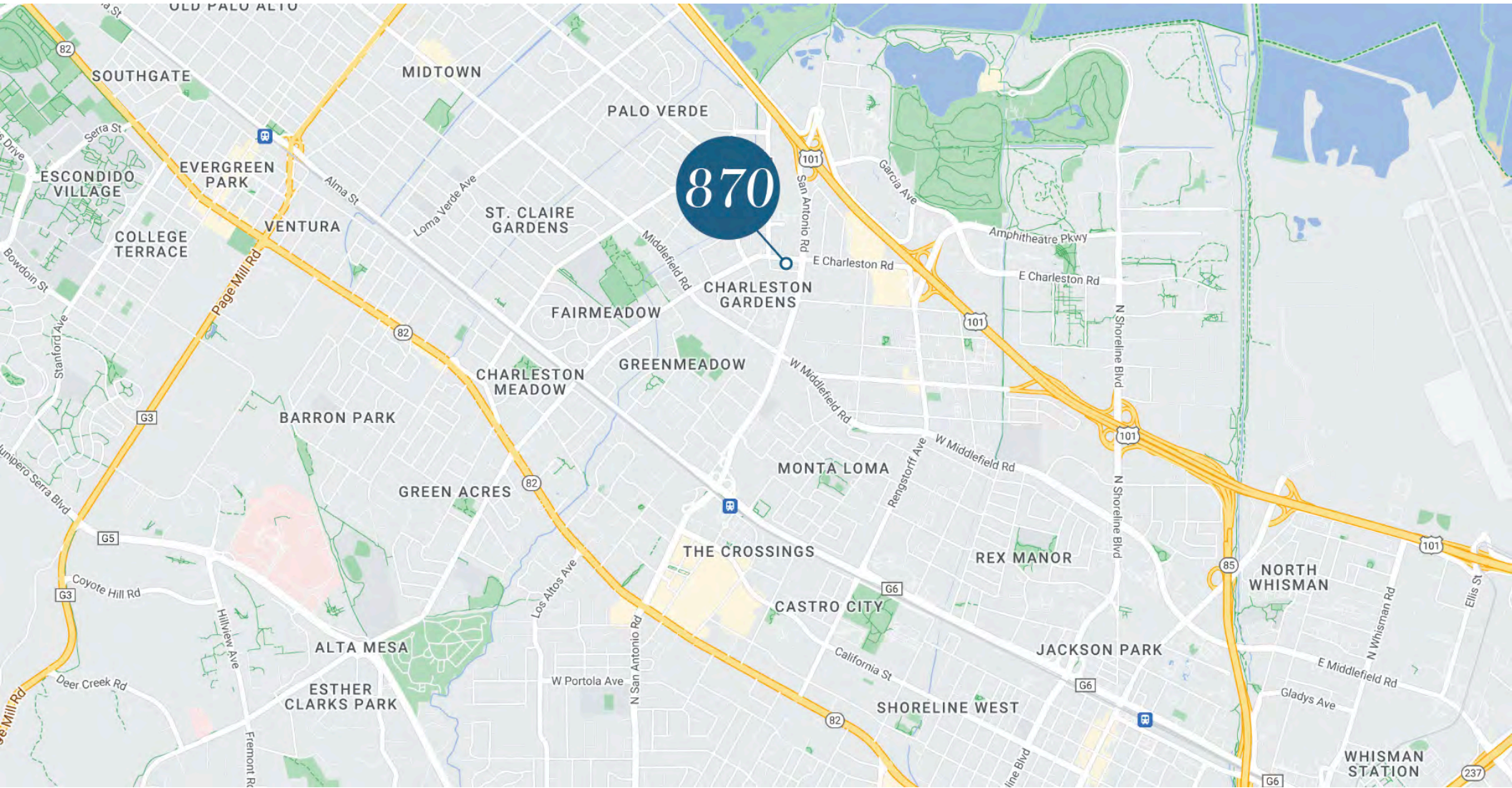
3,105 RSF

- » Class A interiors
- » One executive office
- » Two private offices
- » Large conference room
- » Suspended upgraded light fixtures
- » Open office area with carpet tiles
- » Beautiful reception counter
- » Open lunch area with upper & lower cabinetry
- » Sink, dishwasher, and room for refrigerator



The statement with the information it contains is given with the understanding that all negotiations relating to this purchase, renting, or leasing of the property described above shall be conducted through this office. The above information, while not guaranteed, has been secured from sources we believe to be reliable. Offering subject to change.

ACCESSIBILITY



15+

Nearby Restaurants
& Dining

7+

Nearby Shopping
Destinations

5+

Nearby Cafes &
Coffee Shops

4+

Nearby Exercise
Locations

The statement with the information it contains is given with the understanding that all negotiations relating to this purchase, renting, or leasing of the property described above shall be conducted through this office. The above information, while not guaranteed, has been secured from sources we believe to be reliable. Offering subject to change.



870

E. CHARLESTON RD PALO ALTO, CA 94303



Scan or click
for more
information



Buddy Parsons
President
408.453.4700x116
buddy@borelli.com
LIC. 00754782

Lee Jatta
Senior Vice President
408.453.4700x140
lee@borelli.com
LIC. 01828564

Abigail Parsons
Property Manager
408.453.4700x100
abigail@borelli.com
LIC. 02114081