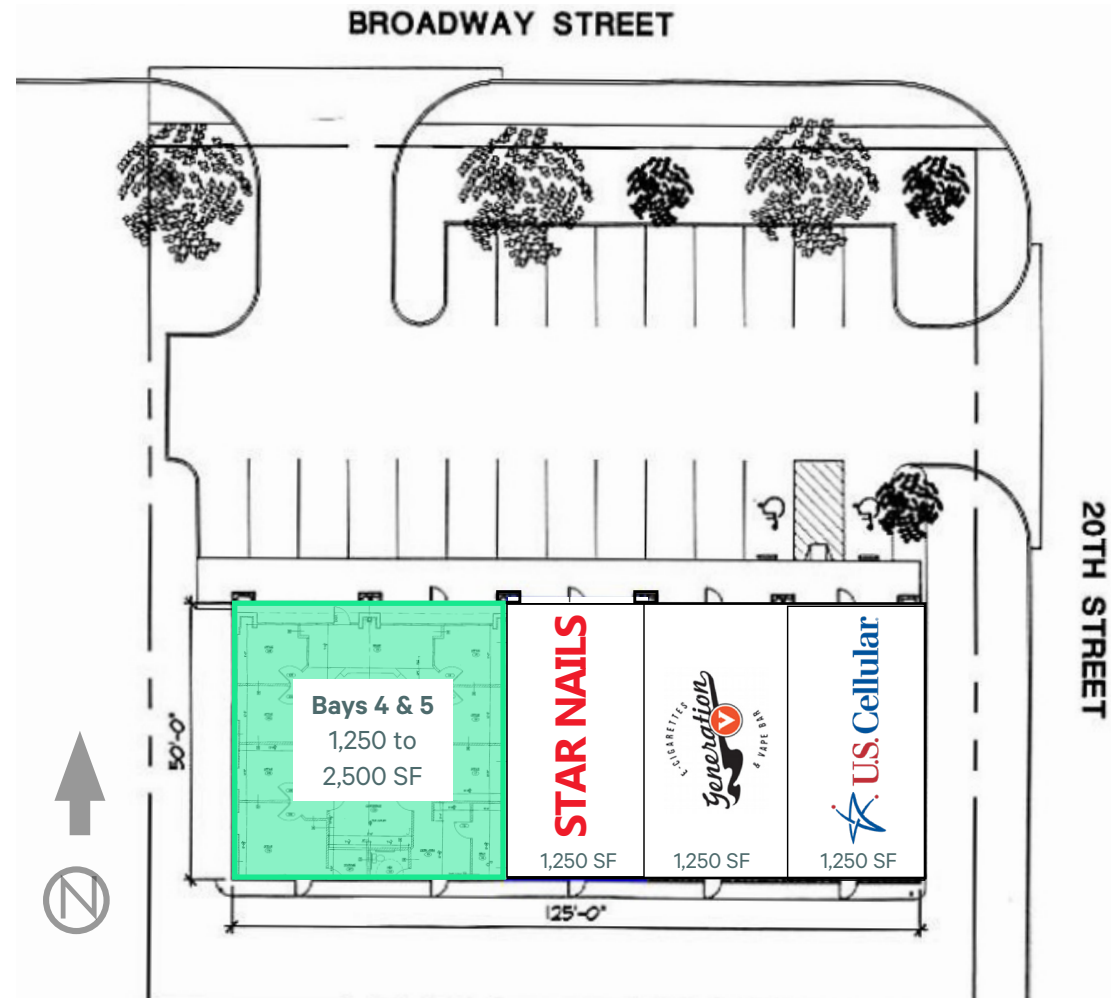


# Hill Plaza

2015 W Broadway  
Council Bluffs, IA 51501  
[www.cbre.us/nebraska](http://www.cbre.us/nebraska)





# Property Information

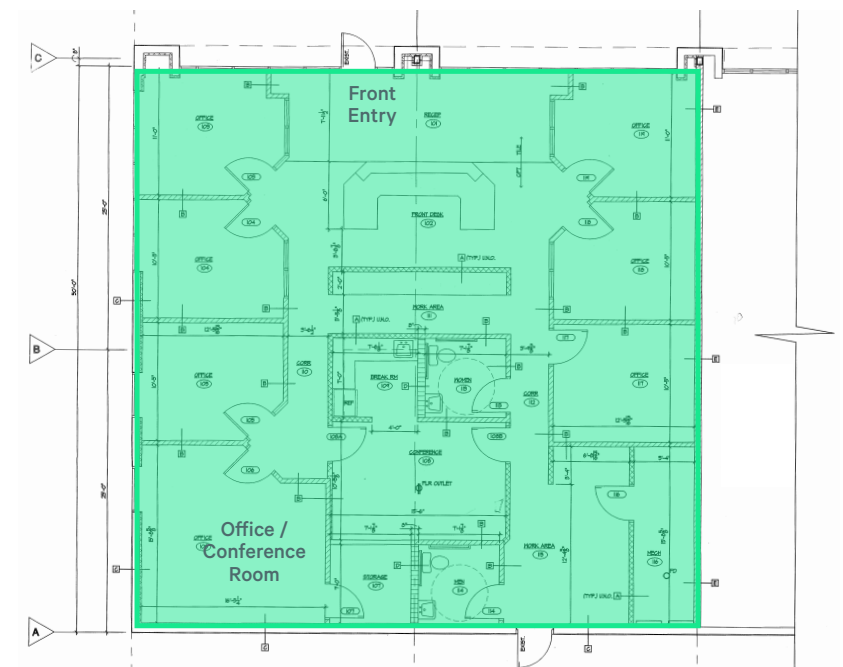
**Space Available**  
Bay 4 & 5            1,500 - 2,500 SF

**Lease Rate**            \$14.00 PSF, NNN

## Features

- + End cap space available
- + Nicely built-out office space
- + Join U.S. Cellular, Star Nails, and Generation V E-Cigarettes & Vape Bar in highly visible center
- + Monument and reader board signage
- + Located along highly trafficked West Broadway

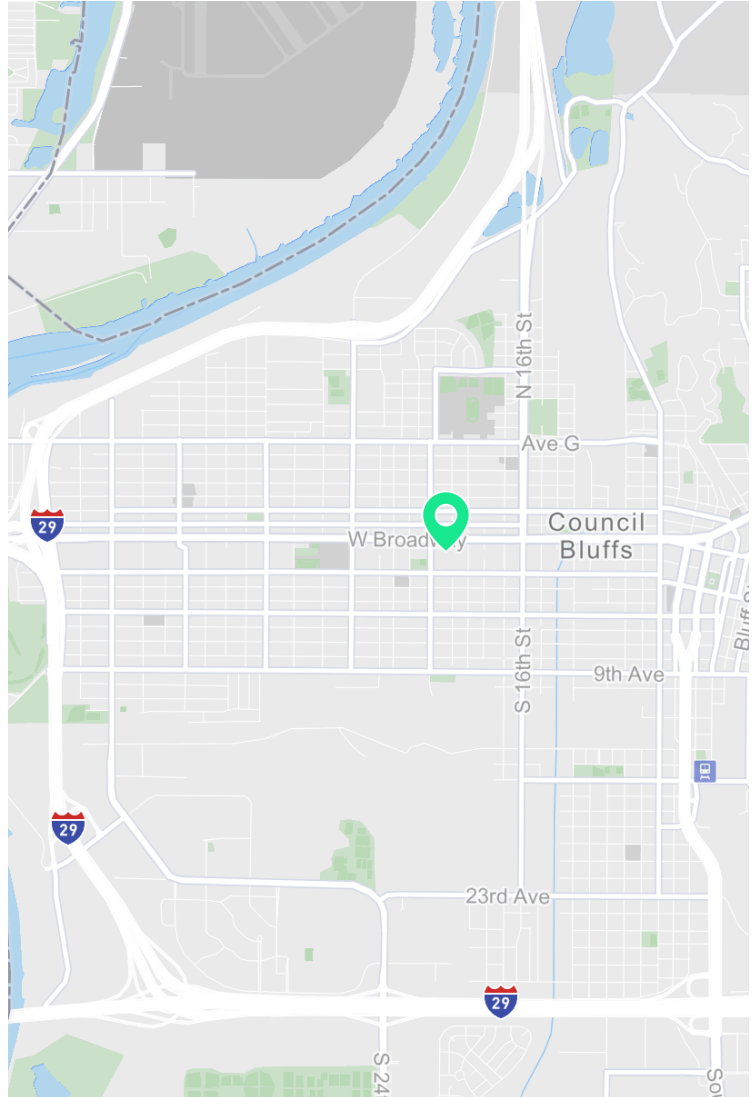
Additional Information	
Building Size	6,250 SF
Lot Size	6,250
Year Built	2005
Traffic Counts	24,700 VPD
Signage	Monument & Store Front
Available	Now
Estimated NNNs	\$10.10 SF (2019)



# Hill Plaza

2015 W Broadway | Council Bluffs, IA 51501

# For Lease



## Contact Us

### Mark Obermeyer

Vice President

+1 402 697 5825

mark.obermeyer@cbre.com

rev011222aw © 2022 CBRE, Inc. All rights reserved. This information has been obtained from sources believed reliable, but has not been verified for accuracy or completeness. You should conduct a careful, independent investigation of the property and verify all information. Any reliance on this information is solely at your own risk. CBRE and the CBRE logo are service marks of CBRE, Inc. All other marks displayed on this document are the property of their respective owners, and the use of such logos does not imply any affiliation with or endorsement of CBRE. Photos herein are the property of their respective owners. Use of these images without the express written consent of the owner is prohibited.