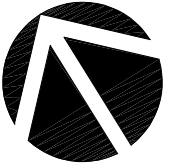


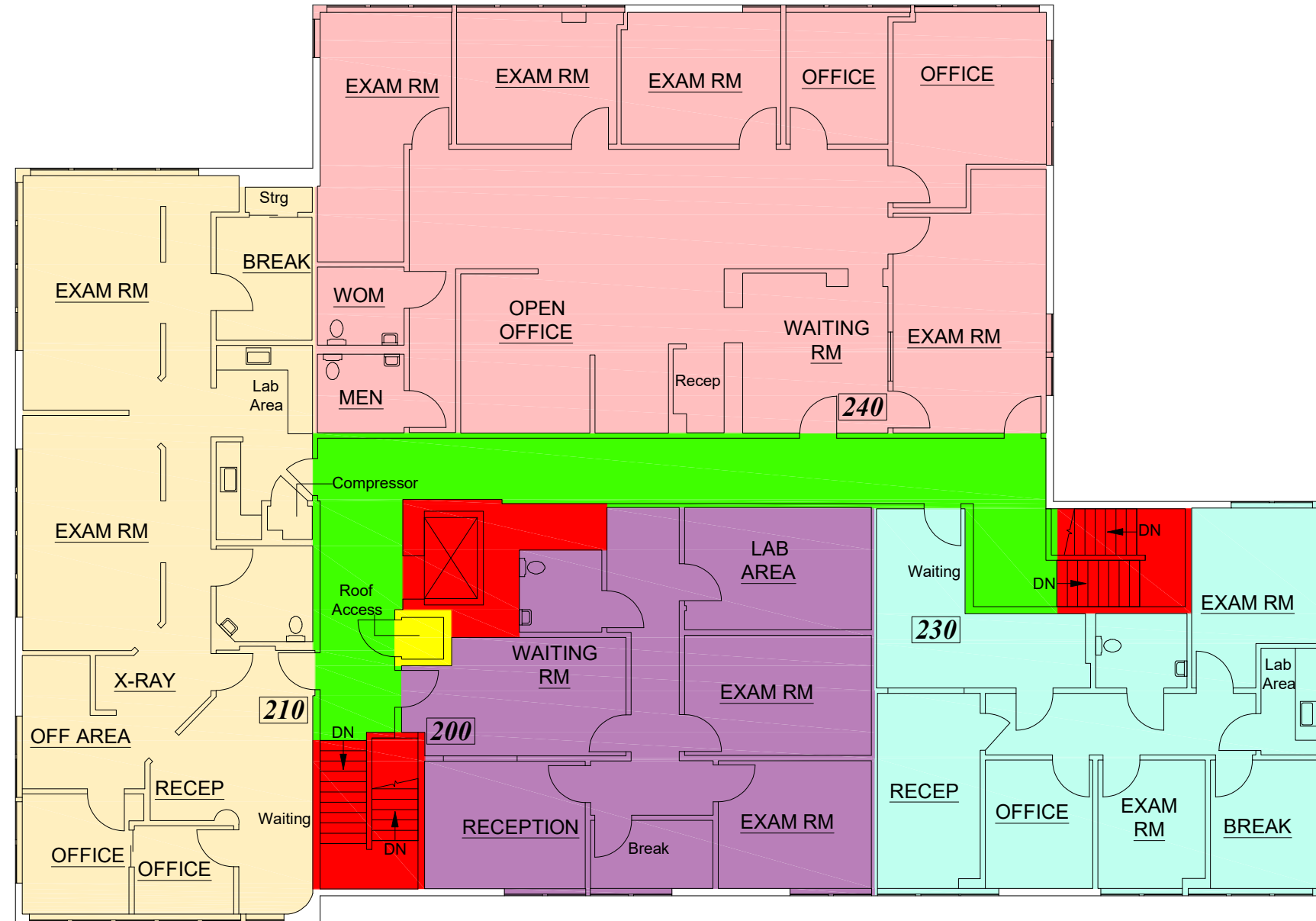
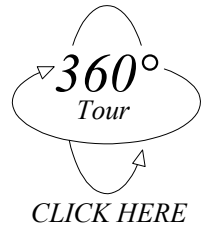
PREPARED FOR:
 A&A Management
 PO Box 41473
 San Jose, CA 95160
 Tel (408) 398-2128

ABORN PROFESSIONAL CENTER
2060 ABORN RD
SAN JOSE, CA

SECOND FLOOR
 (As Measured: September 2024)



LEASE PLAN

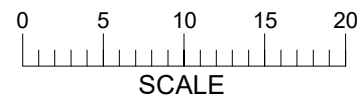


FLOOR SUMMARY	SQ.FT.
Total Rentable	6,609
Total Occupant	5,547
Total Usable	5,547
Total Tenant Ancillary	0
Total Non-Allocated Tenant	0
Floor Service	551
Building Service	21
Inter-Allocated Service	0
Building Amenity	0
Inter-Allocated Amenity	0
Total Vertical Penetration	330
Total Parking	0

Suite #	Occup. Area	Non-Alloc.	Rentable	Final R.	Final LF	% of Tot. R.
200	1,040.8		1,240.1	1,240.1	1.1915	10.4
210	1,451.8		1,729.7	1,729.7	1.1915	14.5
230	993.2		1,183.4	1,183.4	1.1915	9.9
240	2,060.8		2,455.4	2,455.4	1.1915	20.6

AREAS COMPUTED IN ACCORDANCE WITH
 ANSI/BOMA (Z65.1) 2024 OFFICE STANDARD,
 METHOD A (Multiple Load Factors Method).

Survey Accuracy: +/- 0.00 %



LASERTECH® is a registered US trademark of Lasertech® Floorplans Ltd.
 Copyright 1998 Lasertech® Floorplans Ltd., All Rights Reserved



<https://LT-FP.com>
 TEL: (888) 393-6655
 FILE: 24-284