



Development Opportunities // Sturtevant, WI

Multiple vacant land development sites available in Sturtevant, WI. One of the hottest development areas in Wisconsin, Metro Racine area is headquarters to S.C. Johnson, BRP US Inc, Modine Manufacturing, CNH Global, InSinkErator & Seda North America and is located less than 5 minutes from Interstate 94-41.

VACANT LAND AVAILABLE

2953 WISCONSIN STREET

Sturtevant, WI

Asking Price
\$375,000

Parcel Number 1

181-03-22-21-139-000 +/- 0.08 Acres

Zoning Commercial

Parcel Number 2

181-03-22-21-140-000 +/- 0.24 Acres

Zoning Commercial

Parcel Number 3

181-03-22-21-141-000 +/- 0.24 Acres

Zoning Commercial

Parcel Number 4

181-03-22-21-142-000 +/- 0.15 Acres

Zoning Commercial

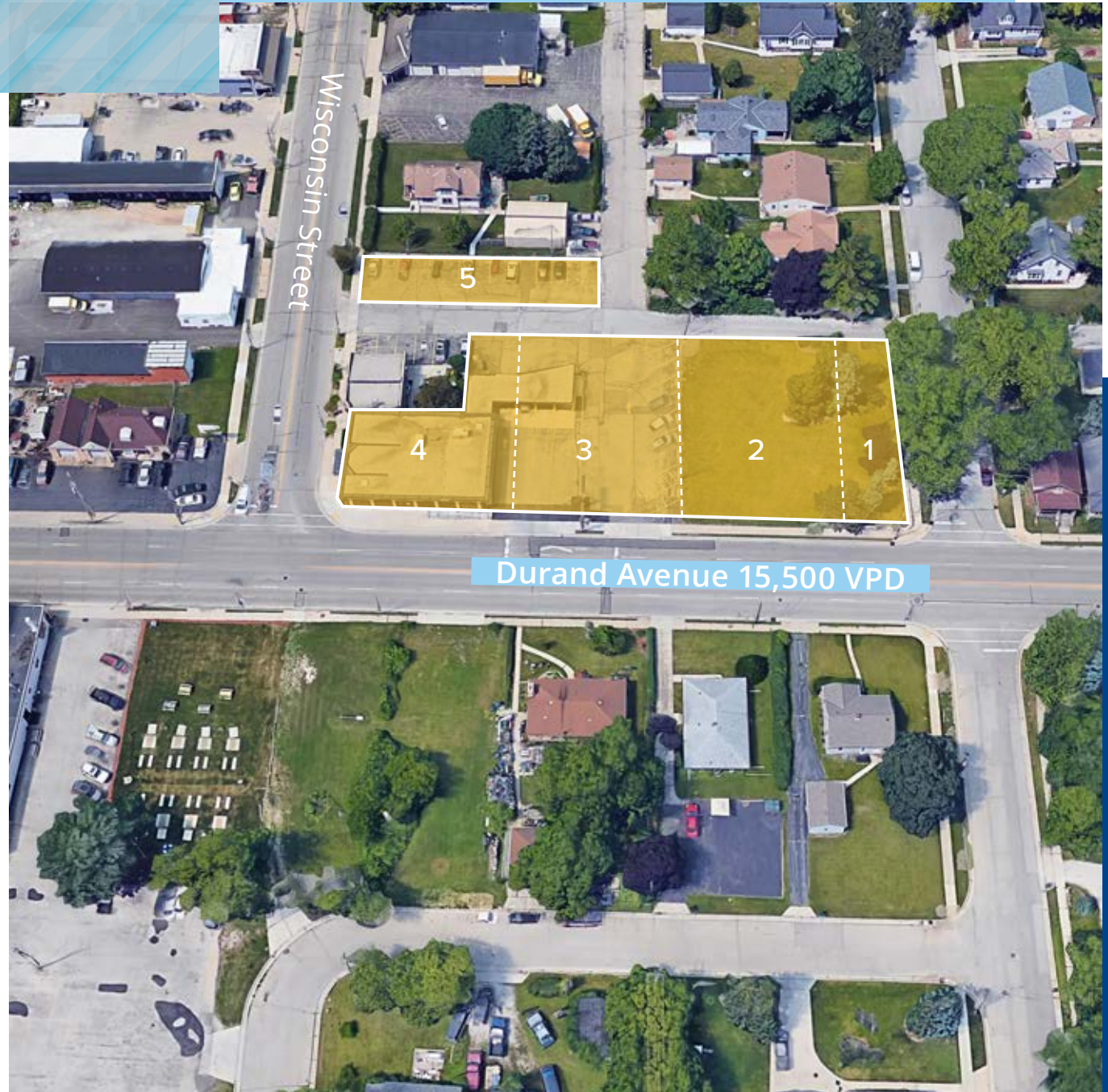
Parcel Number 5

181-03-22-21-144-000 +/- 0.13 Acres

Zoning Commercial

Approx .84 AC Available

- Located at the Gateway to Sturtevant!
- Village would consider rezoning to mixed-use



10001 WASHINGTON AVENUE

Sturtevant, WI

Asking Price
\$850,000

Parcel Number

181-03-22-16-428-250

+/- 4.5 Acres Available

Zoning

Commercial

Approx 4.5 AC Available

- Located in Renaissance Business Park
- High visibility on Hwy 20 (Washington Avenue)
- Located next door to Amtrak Hiawatha Station
- Seller may split the parcel



10201 E EXPLORATION COURT

Sturtevant, WI

Contact Broker For Pricing

Parcel Number

181-03-22-16-428-041

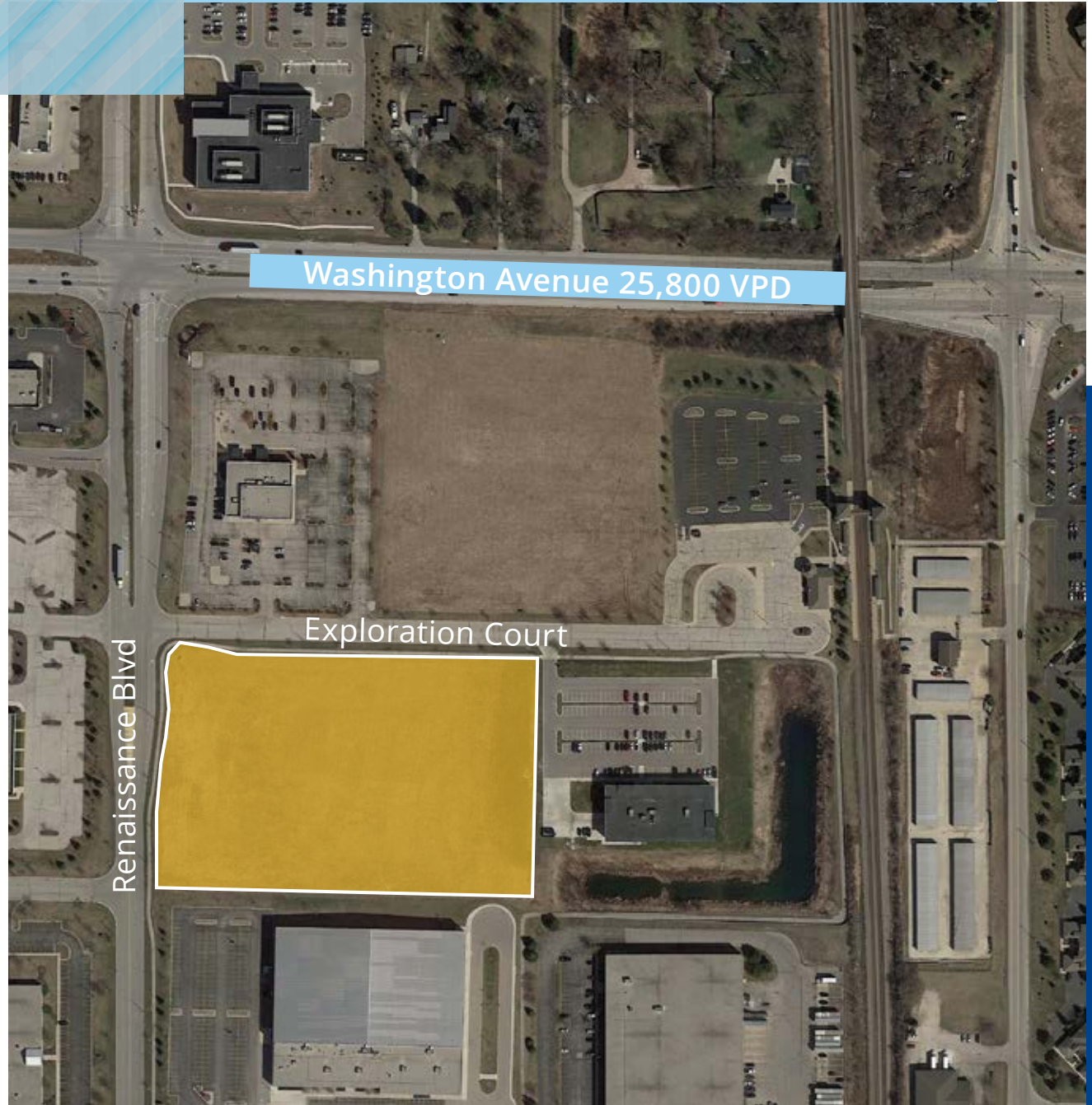
+/- 7.5 Acres

Zoning

Commercial

Approx 7.5 AC Available

- Located in Renaissance Business Park
- Near Amtrak Hiawatha Station
- Village would consider rezoning to Industrial/Business Park

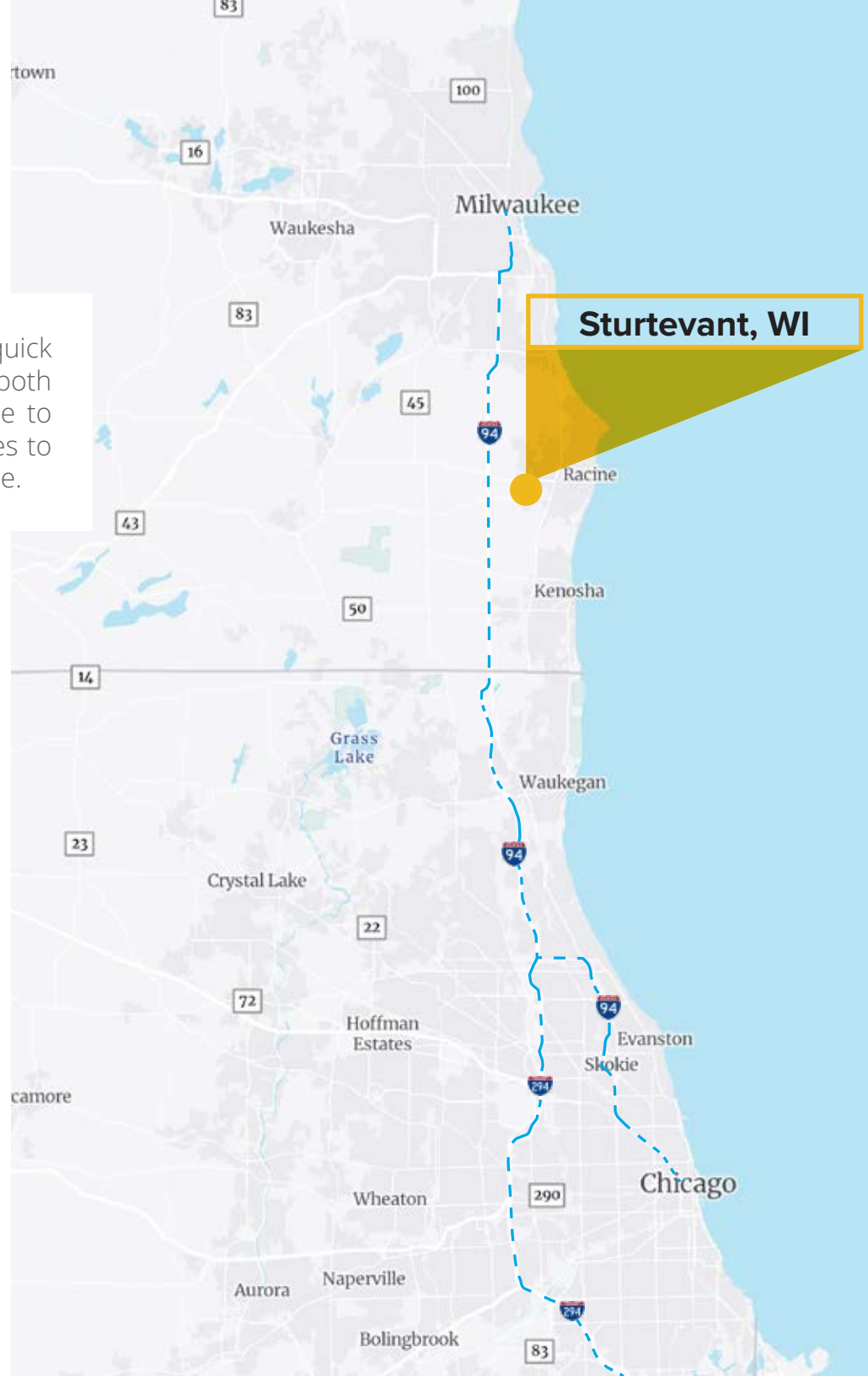


ABOUT THE AREA

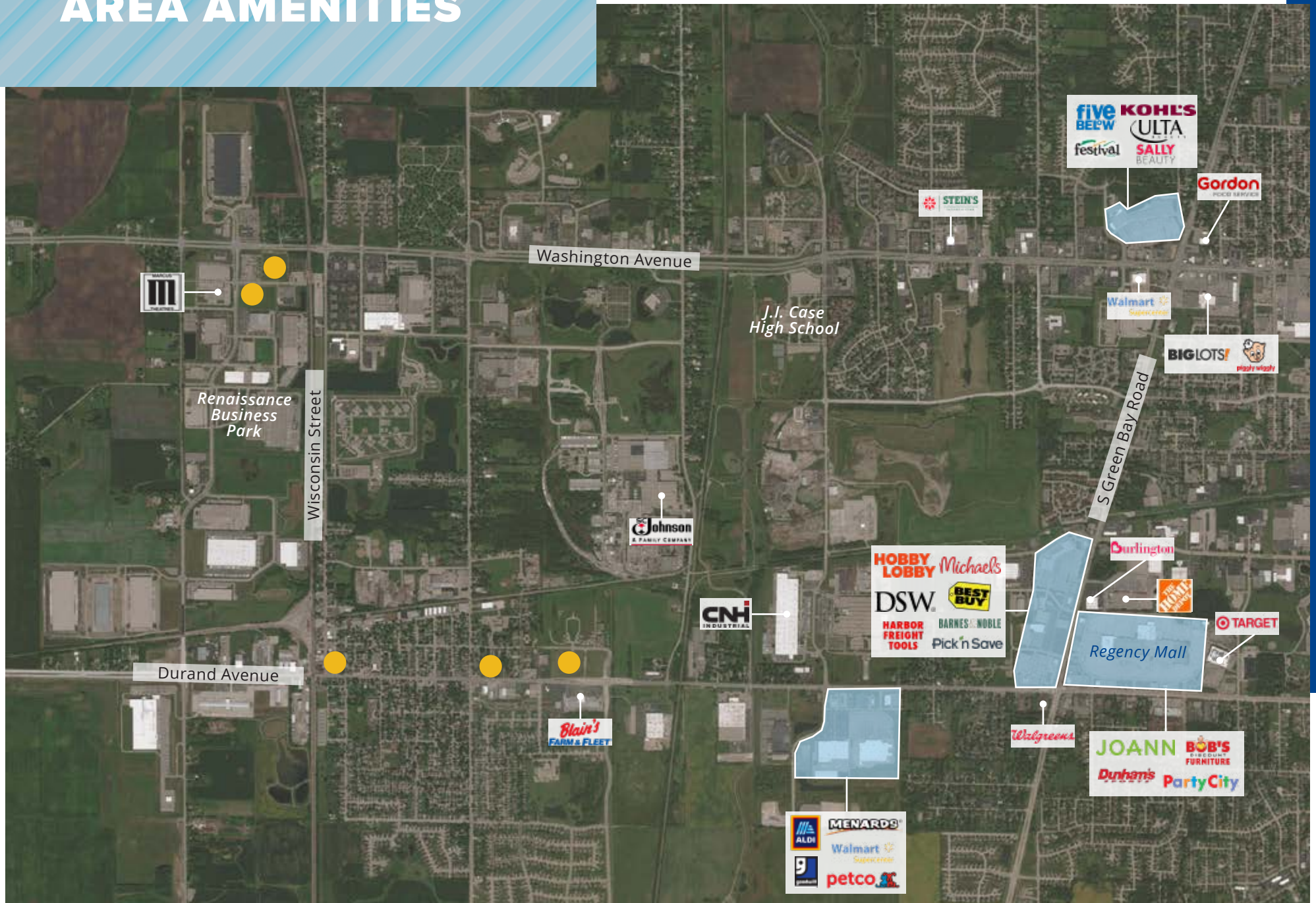
Situated in Racine County, the Village of Sturtevant has quick access to Interstate 94, creating unsurpassed access to both Milwaukee and Chicago metropolitans. Sturtevant is home to 7,000 individuals and 250 businesses. Sturtevant continues to develop with the demand of industrial and warehouse space.

Distance to Key Areas

I-94 Access	2 Miles (4 Minutes)
Mitchell International Airport	22 Miles (23 Minutes)
Downtown Milwaukee	28 Miles (31 Minutes)
Chicago, O'hare Airport	55 Miles (50 Minutes)
Downtown Chicago	70 Miles (1 Hour, 15 Minutes)
Chicago, Midway Airport	78 Miles (1 Hour, 34 Minutes)



AREA AMENITIES



VACANT LAND AVAILABLE

Development Opportunities // Sturtevant, WI

RUSS SAGMOEN

COLLIERS | WISCONSIN

Partner | Retail Services

+1 414 278 6810

russ.sagmoen@colliers.com

833 E Michigan St., Suite 500

Milwaukee, WI 53202

+1 414 276 9500

Colliers

This document/email has been prepared by Colliers for advertising and general information only. Colliers makes no guarantees, representations or warranties of any kind, expressed or implied, regarding the information including, but not limited to, warranties of content, accuracy and reliability. Any interested party should undertake their own inquiries as to the accuracy of the information. Colliers excludes unequivocally all inferred or implied terms, conditions and warranties arising out of this document and excludes all liability for loss and damages arising there from. This publication is the copyrighted property of Colliers and /or its licensor(s). © 2023. All rights reserved. This communication is not intended to cause or induce breach of an existing listing agreement.



Non-Residential Customers

Wisconsin law requires all real estate licensees to give the following information about brokerage services to prospective customers.

Prior to negotiating on your behalf the Brokerage firm, or an agent associated with the firm, must provide you the following disclosure statement:

Broker Disclosure to Customers

You are a customer of the broker. The broker is either an agent of another party in the transaction or a subagent of another broker who is the agent of another party in the transaction. The broker, or a salesperson acting on behalf of the broker, may provide brokerage services to you, the broker owes you, the customer, the following duties:

- The duty to provide brokerage services to you fairly and honestly.
- The duty to exercise reasonable skill and care in providing brokerage services to you.
- The duty to provide you with accurate information about market conditions with a reasonable time if you request it, unless prohibited by law.
- The duty to protect your confidentiality. Unless the law requires it, the broker will not disclose your confidential information or the confidential information to other parties.
- The duty to safeguard trust funds and other property the broker holds.
- The duty, when negotiating, to present contract proposals in an objective and unbiased manner and disclose the advantages and disadvantages of the proposals.

Please review this information carefully. A broker or salesperson can answer your questions about brokerage services, but if you need legal advice, tax advice or a professional home inspection contact an attorney, tax advisor, or home inspector. This disclosure is required by section 452.135 of the Wisconsin statutes and is for information only. It is a plain-language summary of a broker's duties to a customer under section 452.133 (1) of the Wisconsin statutes.

Confidentiality Notice to Customers

Broker will keep confidential any information given to broker in confidence, or any information obtained by broker that he or she knows a reasonable person would want to be kept confidential. Unless the information must be disclosed by law or you authorize the broker to disclose particular information. A broker shall continue to keep the information confidential after broker is no longer providing brokerage services to you.

The following information is required to be disclosed by law:

1. Material adverse facts, as defined in section 452.01 (5g) of the Wisconsin Statutes.
 2. Any facts known by the broker that contradict any information included in a written inspection report on the property or real estate that is the subject of the transaction.
- To ensure that the broker is aware of what specific information you consider confidential, you may list that information below. At a later time, you may also provide the broker with other information you consider to be confidential.

Confidential information: _____

Non-Confidential information: (The following information may be disclosed by Broker): _____

(Insert information you authorize the broker to disclose such as financial qualification information.)

Consent to Telephone Solicitation

I/We agree that the broker and any affiliated settlement service providers (for example, a mortgage company or title company) may call our/my home or cell phone numbers regarding issues, goods and services related to the real estate transaction until I/we withdraw this consent in writing.

List Home/Cell Numbers: _____

Sex Offender Registry

Notice: You may obtain information about the sex offender registry and persons registered with the registry by contacting the Wisconsin Department of Corrections on the Internet at <http://offender.doc.state.wi.us/public/>

Definition of Material Adverse Facts

A "material adverse fact" is defined in Wis. Stat. 452.01 (5g) as an adverse fact that a party indicates is of such significance, or that is generally recognized by a competent licensee as being of such significance to a reasonable party, that it affects or would affect the party's decision to enter into a contract or agreement concerning a transaction or affects or would affect the party's decision to enter into a contract or agreement concerning a transaction or affects or would affect the party's decision about the terms of such a contract or agreement. An "adverse" fact is defined in Wis. Stat. 452.01 (1e) as a condition or occurrence that a competent licensee generally recognizes will significantly and adversely affect the value of the property, significantly reduce the structural integrity of improvements to real estate, or present a significant health risk to occupants of the property; or information that indicates that a party to a transaction is not able to or does not intend to meet his or her obligations under a contract or agreement made concerning the transaction.