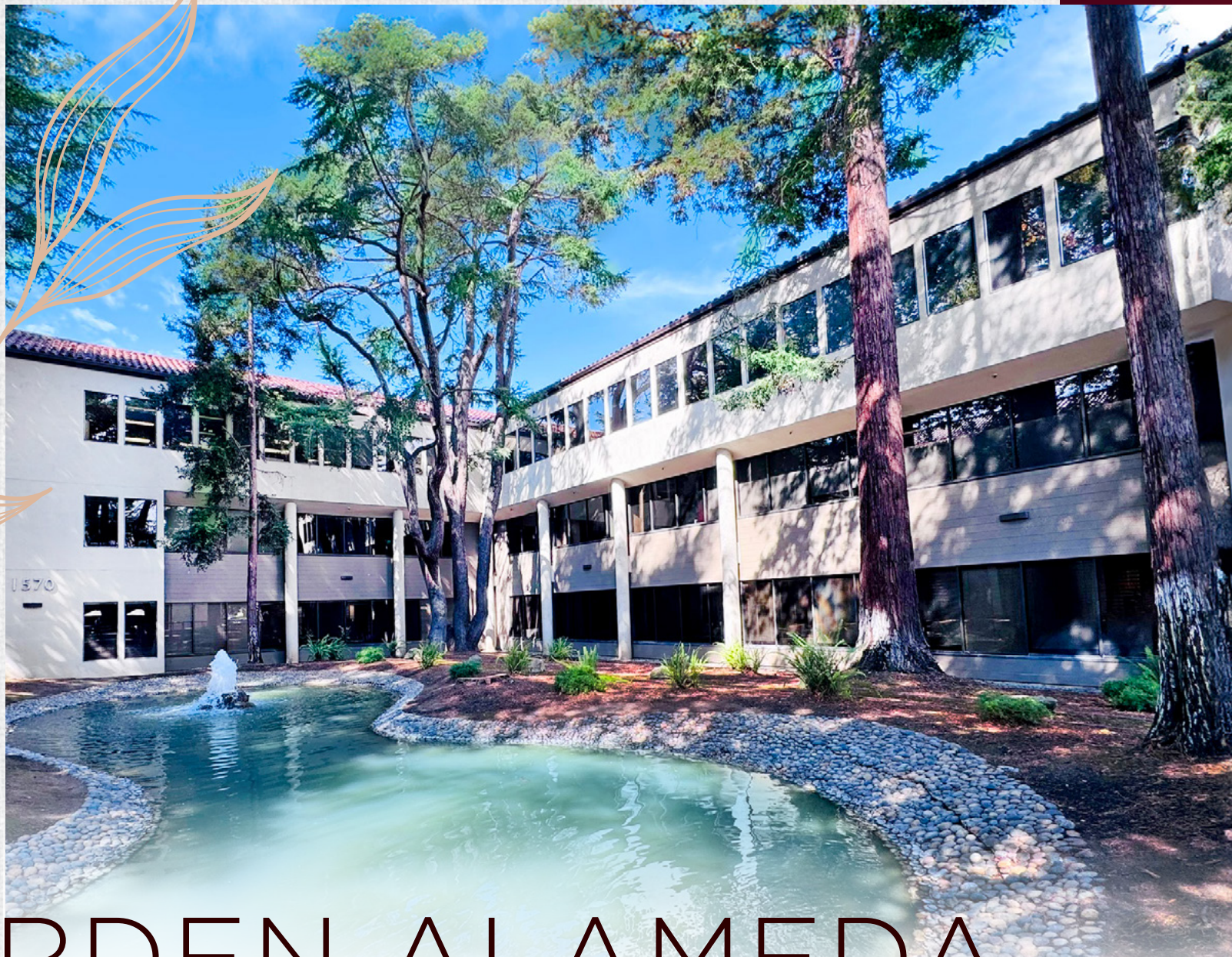


1520-1590 THE ALAMEDA, SAN JOSE, CA



GARDEN ALAMEDA

±577 - ±6,457 SF OFFICE SUITES FOR LEASE
PREMIER LOCATION | MOVE-IN READY OPTIONS



A CONNECTED OFFICE CAMPUS ON THE ALAMEDA

FLEXIBLE SUITES

WALKABLE AMENITIES

EXCEPTIONAL ACCESS

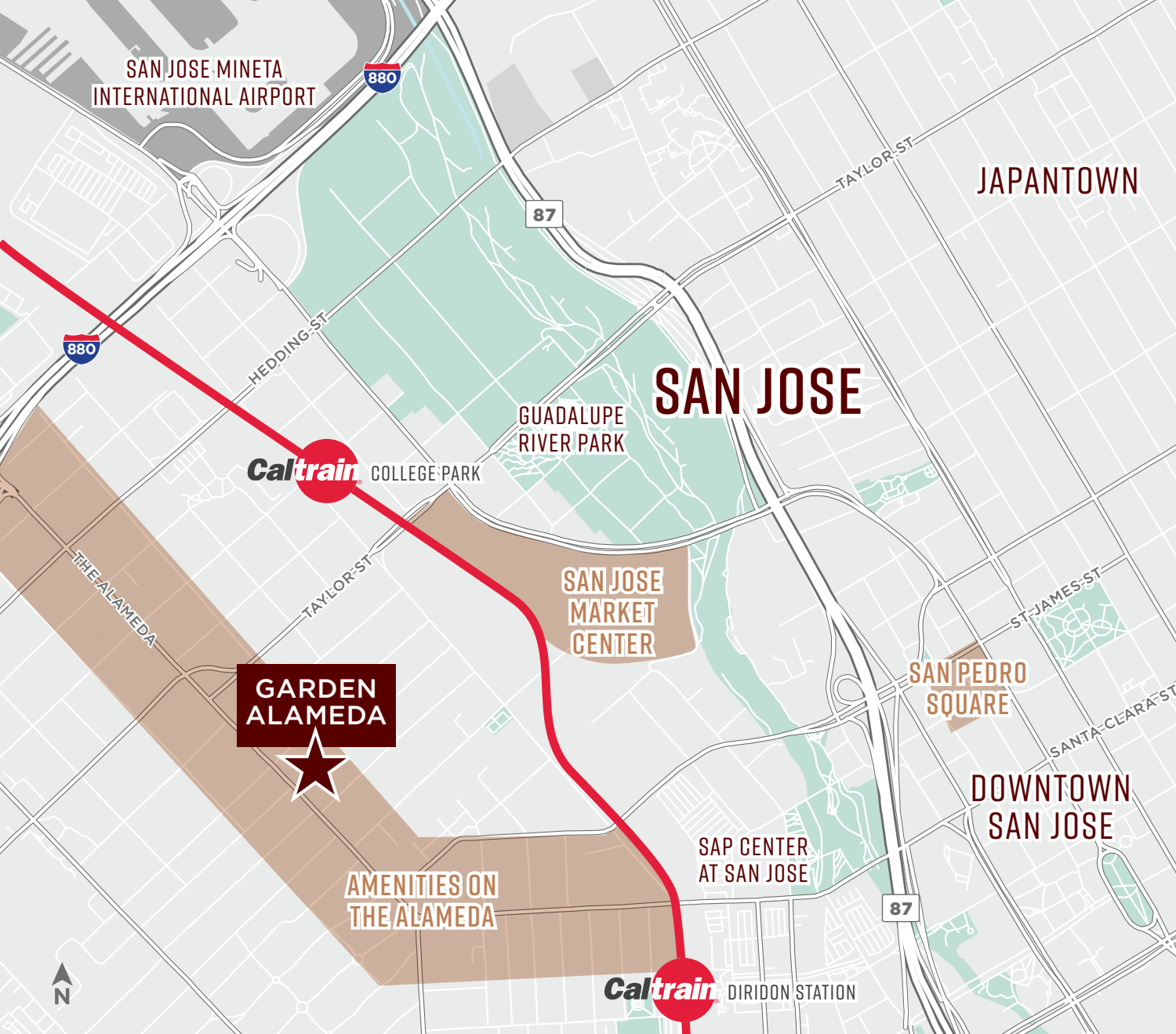
Garden Alameda is a six-building, $\pm 150,000$ SF office campus positioned along San Jose's highly walkable Alameda corridor. The project delivers a professional, modern work environment with upgraded common areas, countless outdoor seating areas, and water features that create an serene campus feel. Tenants benefit from immediate access to a deep retail amenity base, short bike ride times to Diridon Station, and a strong mix of **move-in ready suites** ranging from ± 577 - $\pm 6,457$ SF. Garden Alameda is ideal for teams prioritizing convenience, connectivity, and operational efficiency.

- + Move-in ready suites from ± 577 - $\pm 6,457$ SF
- + Immediate access to HWY 880, 280, 87
- + Expansive outdoor common areas & collaboration zones
- + Minutes to SJC Airport, offering unmatched connectivity.
- + $\pm 150,000$ SF across six freestanding office buildings
- + Walk to: Whole Foods, Crema Coffee, LUNA Mexican Kitchen, and More!
- + Comcast & AT&T fiber connectivity
- + T-T Deli on-site & open daily (1520 The Alameda Ste #105)
- + 4/1,000 parking ratio
- + Flexible layouts designed for efficiency

CURRENT AVAILABILITIES

ADDRESS	SUITE	SQUARE FEET
1530 THE ALAMEDA	SUITE 200	±1,460 SF
1550 THE ALAMEDA	SUITE 105	±1,654 SF
1550 THE ALAMEDA	SUITE 310	±1,377 SF
1550 THE ALAMEDA	SUITE 302	±1,563 SF
1550 THE ALAMEDA	SUITE 305	±1,834 SF
1570 THE ALAMEDA	SUITE 100	±6,457 SF
1570 THE ALAMEDA	SUITE 215	±1,593 SF
1570 THE ALAMEDA	SUITE 225	±577 SF
1570 THE ALAMEDA	SUITE 316	±2,128 SF
1570 THE ALAMEDA	SUITE 330	±6,304 SF





GARDEN ALAMEDA

AMENITIES ON THE ALAMEDA

- | | |
|---------------------------|----------------------------|
| ANYTIME FITNESS | MEDALLO RESTAURANT |
| CAFE ROSALENA | PAPA JOHN'S PIZZA |
| CHIPOTLE MEXICAN GRILL | PEET'S COFFEE |
| CHINA INN | ROSIE'S NEW YORK PIZZA |
| CREMA COFFEE ROASTING CO. | SUBWAY |
| FIVE GUYS | THE UPS STORE |
| FLOODCRAFT BREWING CO. | UNCLE JOHN'S PANCAKE HOUSE |
| GREENLEE'S BAKERY | UPSHIFT CYCLES |
| HANNAH COFFEE | WHOLE FOODS MARKET |
| HOP & VINE | ZONA ROSA |
| LUNA MEXICAN KITCHEN | |

SAN PEDRO SQUARE

- | | |
|--------------------------|-----------------------------|
| ALMA TEQUILERIA | ON A ROLL |
| ANCHORS FISH & CHIPS | PASTA FRESCA |
| GAMEDAY | PIZZA BOCCA LUPO |
| THE GELATO SHOP | PHENOMENAL NOODLE HOUSE |
| HELLA GOOD BURGER | PLAYBACK COFFEE CO. |
| ID CAFE | SAN PEDRO SQUARE MARKET BAR |
| LOTERIA TACO BAR | SUERTE EATERY |
| MARKET BEER CO. | THREE SISTERS WHISKEY BAR |
| MARUWU SEICHA | URBAN MOMO |
| MASTER SHIN KOREAN PLATE | URBAN RITUAL |
| MOCHINUT | |

SAN JOSE MARKET CENTER

- | | |
|-----------------------|------------------------|
| BJ'S RESTAURANT | PETSMART |
| BLUE MANGO | SALLY BEAUTY |
| CHASE BANK | SMASHBURGER |
| EL POLLO LOCO | SPROUTS FARMERS MARKET |
| GAMESTOP | STARBUCKS |
| HAPPY LEMON | TARGET |
| JAMBA | TRADER JOE'S |
| L&L HAWAIIAN BARBECUE | UPS |
| MARSHALLS | WELLS FARGO BANK |
| MICHAELS | WEST COAST SOURDOUGH |
| PANDA EXPRESS | WORLD MARKET |
| PANERA BREAD | |

NEARBY AMENITIES

UNBEATABLE ACCESS



AMTRAK CAPITOL
CORRIDOR ROUTE



VTA GREEN LINE

8 MIN BIKE RIDE
TO SAN JOSE DIRIDON STATION

7 MIN DRIVE
TO SJC AIRPORT

35 MIN DRIVE
TO SFO AIRPORT

2 MIN DRIVE
TO I-880

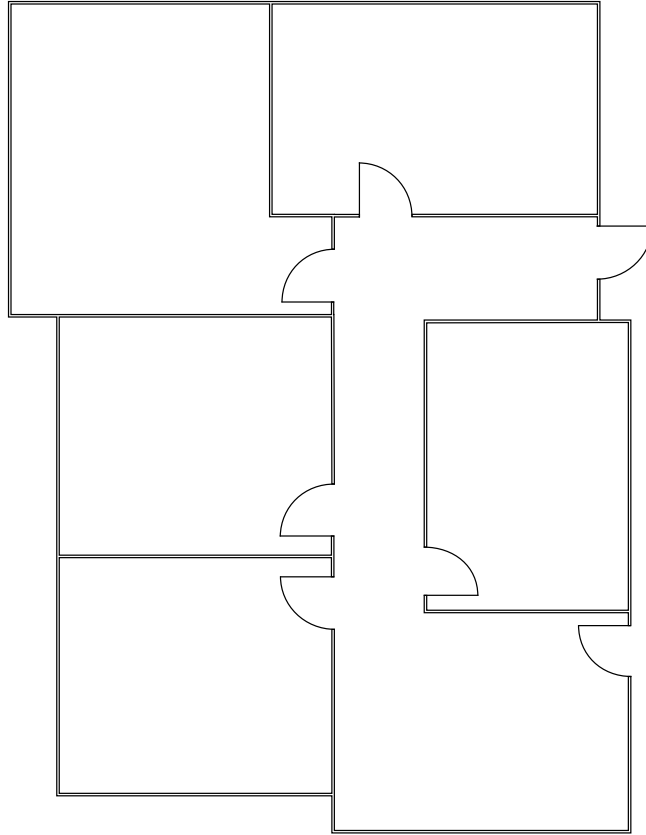


1530 THE ALAMEDA

GARDEN ALAMEDA

SUITE 200 | ±1,460 SF

- + Lobby
- + 4 Offices
- + 1 Conference Room

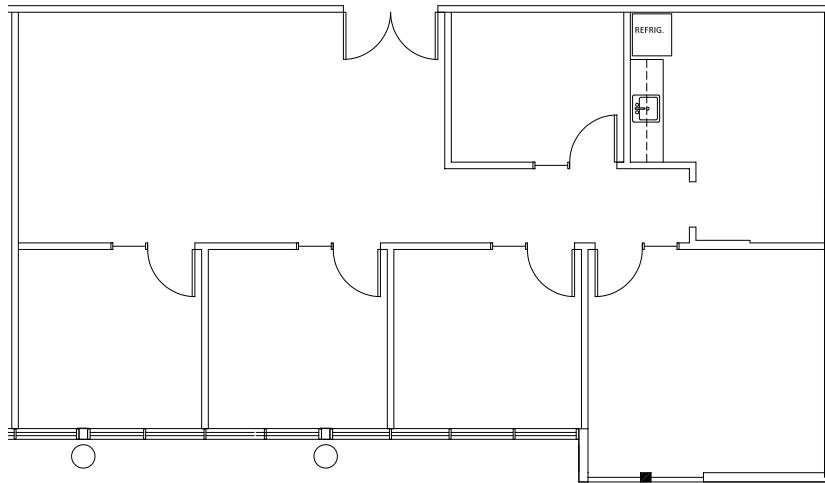


1550 THE ALAMEDA

GARDEN ALAMEDA

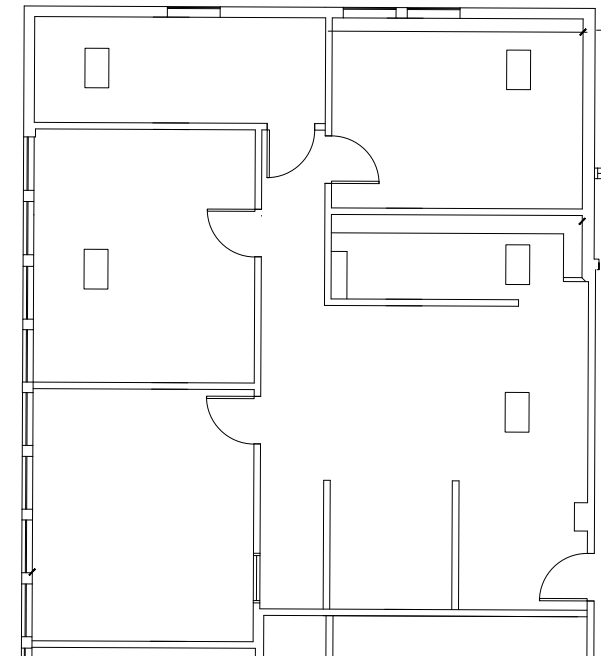
SUITE 105 | ±1,654 SF

- + Lobby
- + 3 Offices
- + 1 Conference Room
- + Kitchen
- + IT/Server Room



SUITE 302 | ±1,561 SF

- + Lobby
- + 2 Offices
- + 1 Conference Room
- + IT/Server Room

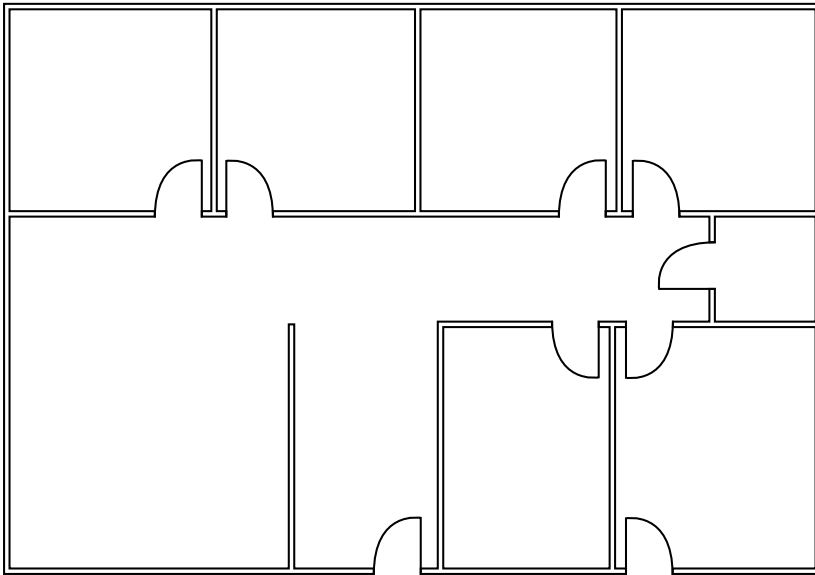


1550 THE ALAMEDA

GARDEN ALAMEDA

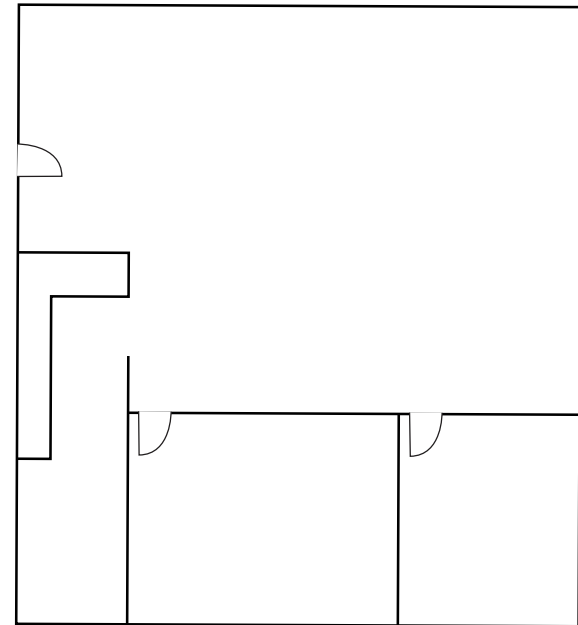
SUITE 305 | ±1,834 SF

- + Lobby
- + 4 Offices
- + 1 Conference Room
- + Open Office
- + IT/Server Room



SUITE 310 | ±1,377 SF

- + Lobby
- + 1 Office
- + 1 Conference Room
- + Open Office

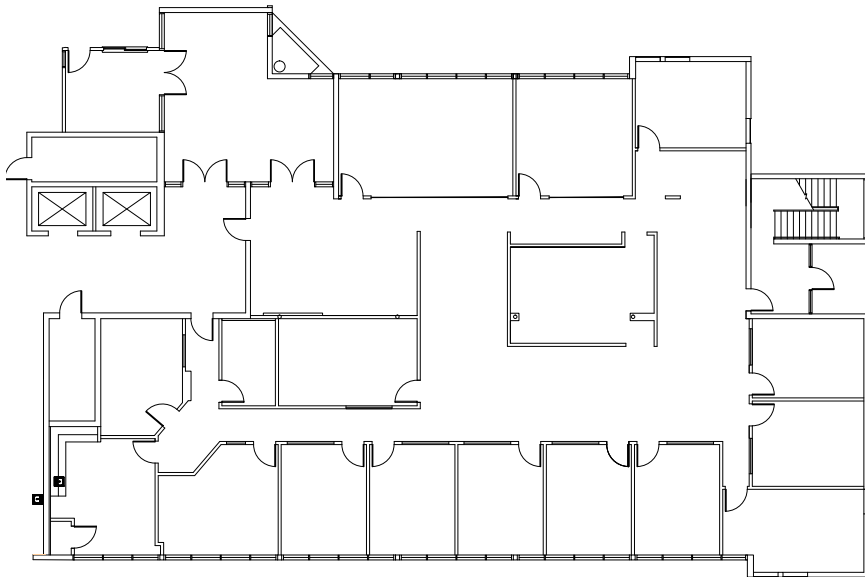


1570 THE ALAMEDA

GARDEN ALAMEDA

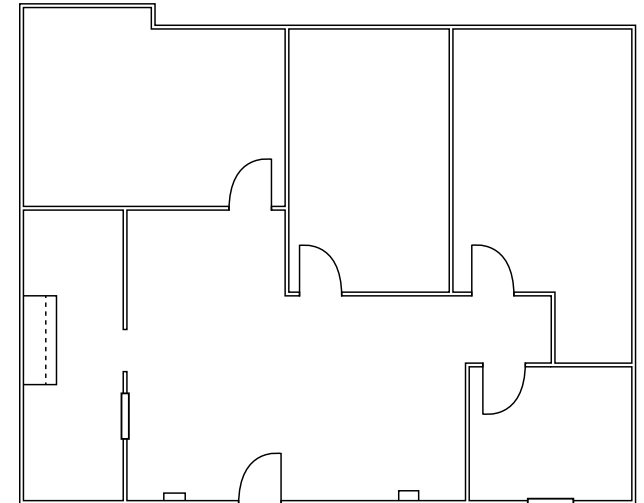
SUITE 100 | ±6,457 SF

- + Lobby
- + 12 Offices
- + 4 Conference Room
- + Open Office
- + Work Room
- + IT/Server Room
- + Storage



SUITE 215 | ±1,593 SF

- + Lobby
- + 2 Offices
- + 1 Conference Room
- + Open Office
- + Kitchen
- + IT/Server Room

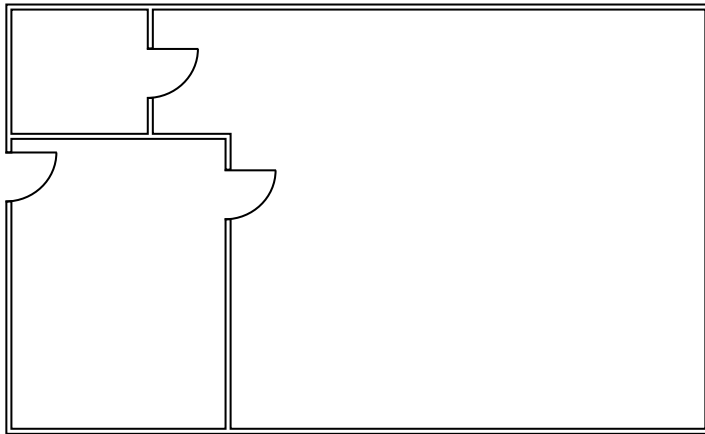


1570 THE ALAMEDA

GARDEN ALAMEDA

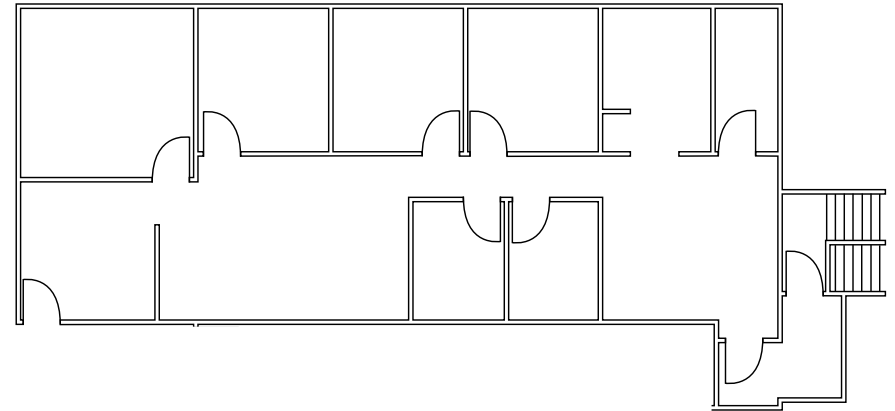
SUITE 225 | ±577 SF

- + Lobby
- + Open Office
- + IT/Server Room



SUITE 316 | ±2,128 SF

- + Lobby
- + 4 Offices
- + 1 Conference Room
- + 2 Call Rooms
- + Open Office
- + IT/Server Room

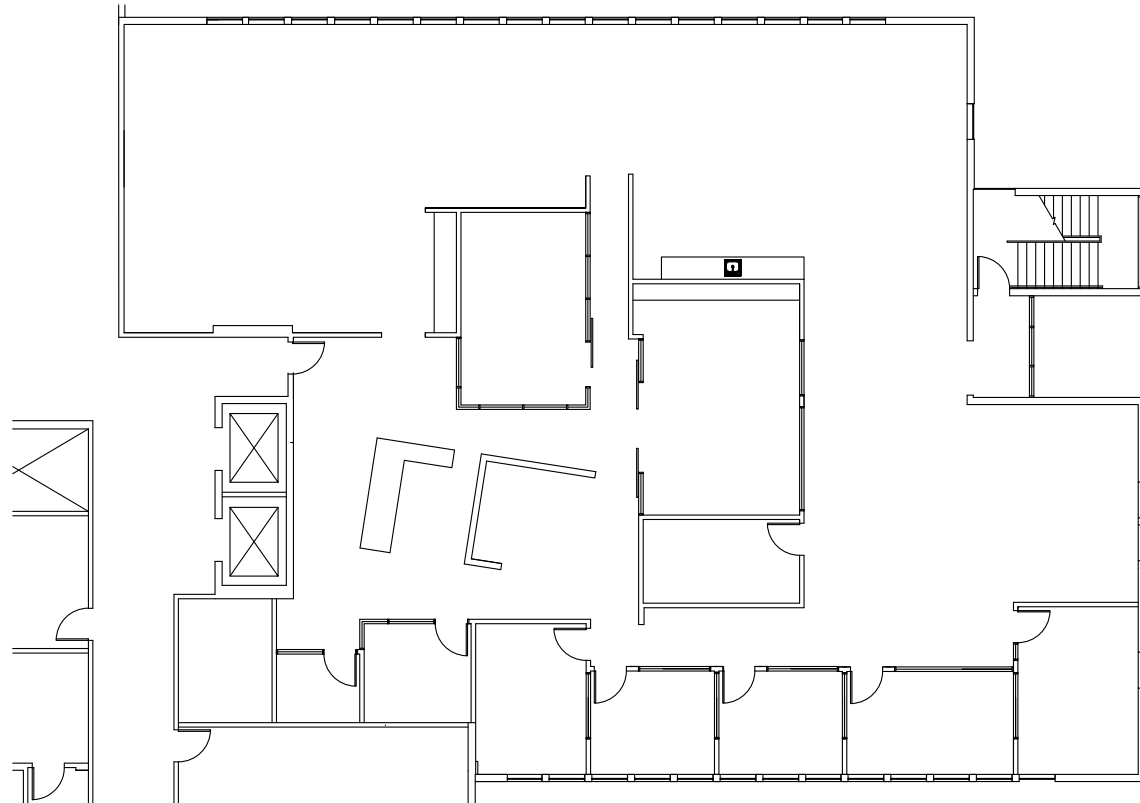


1570 THE ALAMEDA

GARDEN ALAMEDA

SUITE 330 | ±6,304 SF

- + Available with 30-60 Days Notice
- + Market Ready!
- + Lobby
- + 6 Offices
- + 2 Conference Rooms
- + Server/IT
- + Open Kitchen & Break Area
- + Open Office



ERIK HALLGRIMSON

+1 408 615 3435

erik.hallgrimson@cushwake.com

LIC #01274540

CLARK STEELE

+1 408 436 3653

clark.steele@cushwake.com

LIC #01995379

DOLORES ESTRADA

+1 408 436 3640

dolores.estrada@cushwake.com

LIC #02083800

KATE MYERS

+1 408 502 0196

kate.myers@cushwake.com

LIC #02253804



©2025 Cushman & Wakefield. All rights reserved. The information contained in this communication is strictly confidential. This information has been obtained from sources believed to be reliable but has not been verified. NO WARRANTY OR REPRESENTATION, EXPRESS OR IMPLIED, IS MADE AS TO THE CONDITION OF THE PROPERTY (OR PROPERTIES) REFERENCED HEREIN OR AS TO THE ACCURACY OR COMPLETENESS OF THE INFORMATION CONTAINED HEREIN, AND SAME IS SUBMITTED SUBJECT TO ERRORS, OMISSIONS, CHANGE OF PRICE, RENTAL OR OTHER CONDITIONS, WITHDRAWAL WITHOUT NOTICE, AND TO ANY SPECIAL LISTING CONDITIONS IMPOSED BY THE PROPERTY OWNER(S). ANY PROJECTIONS, OPINIONS OR ESTIMATES ARE SUBJECT TO UNCERTAINTY AND DO NOT SIGNIFY CURRENT OR FUTURE PROPERTY PERFORMANCE. COE-PM-West-12.16.2025

GARDEN ALAMEDA

