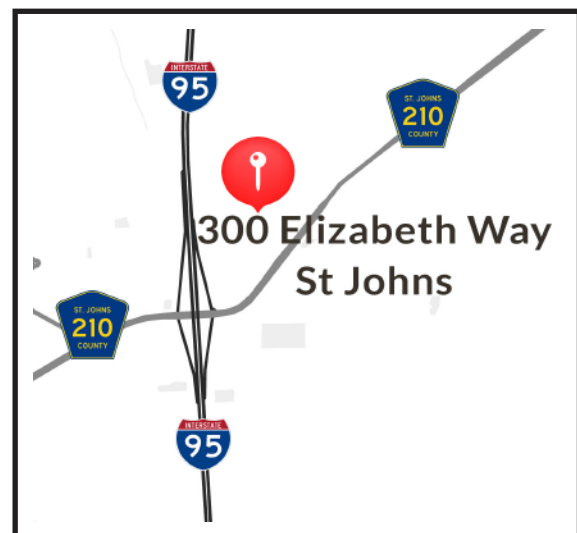




300 Elizabeth Way | St. Johns, FL 32259

Medical Office Space

- Located in Ascension St. Vincent's Hospital inside the Fountains master development
- Prime Medical Office space
- Situated between I-95 and CR 210 with great visibility from the interstate
- Available 24,000± sqft
- Sufficient parking for medical users



Location Map



Demographic Information

HOUSEHOLDS

	1 Mile	3 Mile	5 Mile
2010 Census	1,037	10,552	31,544
2023 Estimate	2,493	24,173	68,659
2028 Projection	2,985	28,766	80,436

INCOME

	1 Mile	3 Mile	5 Mile
Average Household Income	\$111,772	\$128,910	\$129,907
Median Household Income	\$82,738	\$104,255	\$107,575





Listing Agents



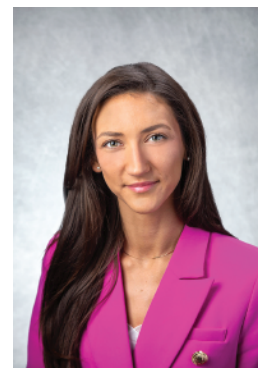
Mert Kerimoglu

Senior Advisor
Healthcare Brokerage – Development
Mobile: (617) 899-3046
Mert.Kerimoglu@crossregions.com



Turul Sengul

Senior Advisor
Mobile: (954) 980-5988
TS@crossregions.com



Taylor Rice

Sales Associate
Mobile: (516) 816-9745
Taylor.Rice@crossregions.com