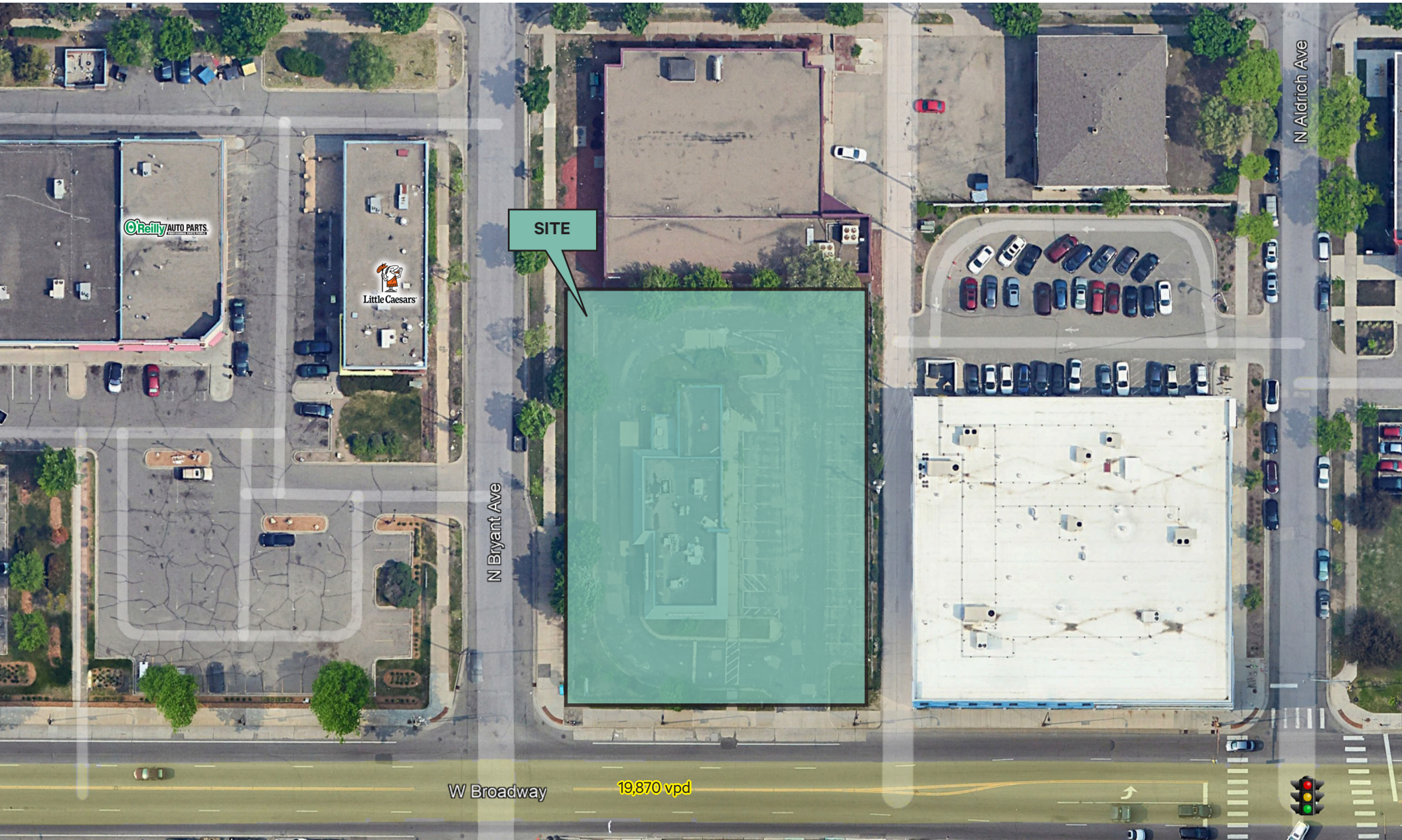


# 818 W Broadway Ave

818 W Broadway Ave | Minneapolis, MN 55411

[www.cbre.com](http://www.cbre.com)



W Broadway

19,870 vpd

N Bryant Ave

N Aldrich Ave



# Property & Area Highlights

## Property Features

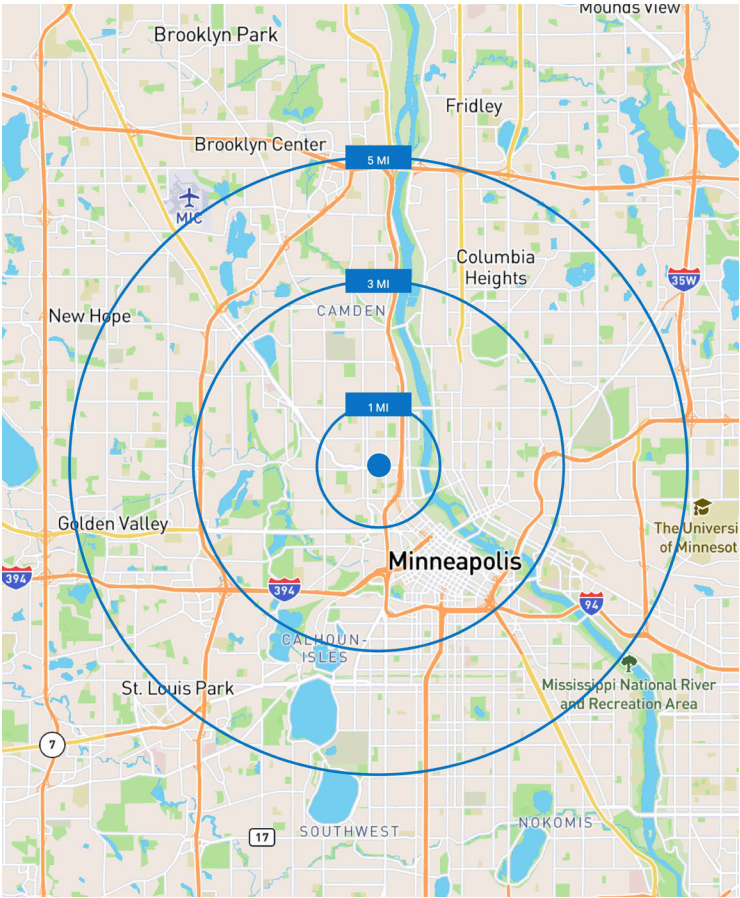
- Great redevelopment opportunity
- 0.74 acres
- Current zoning: CM2 Corridor Mixed-Use District
- Term through June 30, 2030

## Traffic Counts

- 19,870 vpd | W Broadway

## Demographics

	1 Mile	3 Miles	5 Miles
Population	23,691	197,448	468,559
Daytime Population	28,111	300,182	593,646
Households	8,501	92,094	207,818
Average Household Income	\$94,408	\$103,646	\$104,537







## Contact Us

### David Daly

Senior Vice President  
+1 612 201 9398  
david.daly@cbre.com

© 2025 CBRE, Inc. All rights reserved. This information has been obtained from sources believed reliable, but has not been verified for accuracy or completeness. You should conduct a careful, independent investigation of the property and verify all information. Any reliance on this information is solely at your own risk. CBRE and the CBRE logo are service marks of CBRE, Inc. All other marks displayed on this document are the property of their respective owners, and the use of such logos does not imply any affiliation with or endorsement of CBRE. Photos herein are the property of their respective owners. Use of these images without the express written consent of the owner is prohibited.