



## Route 130 & Meadowbrook Road

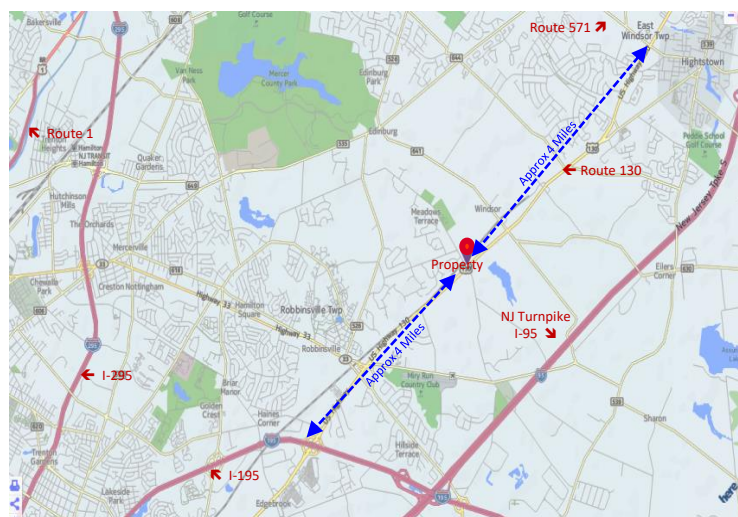
Available for Sale or Lease

**20,000 SF of 1st Floor Retail**  
**20,000 SF on 2nd Floor Office**

- 5.57 Acres on Rt. 130 & Meadowbrook Road, Robbinsville Twp, Mercer Co.
- Approved in 2008 for 40,000 SF
- Parking: 123 Cars
- Block 10, Lot 22.01, Zoned: HC
- Across the Street: 190 New Homes built within the past 24 months by Sharbell Development

Lease Rate: \$25.00/SF NNN

Sale Price: \$4,150,000



APPROVED FOR  
COMMERCIAL BUSINESSES:

Office

Conditional Use

Medical

Restaurants

Retail

Church

Banking

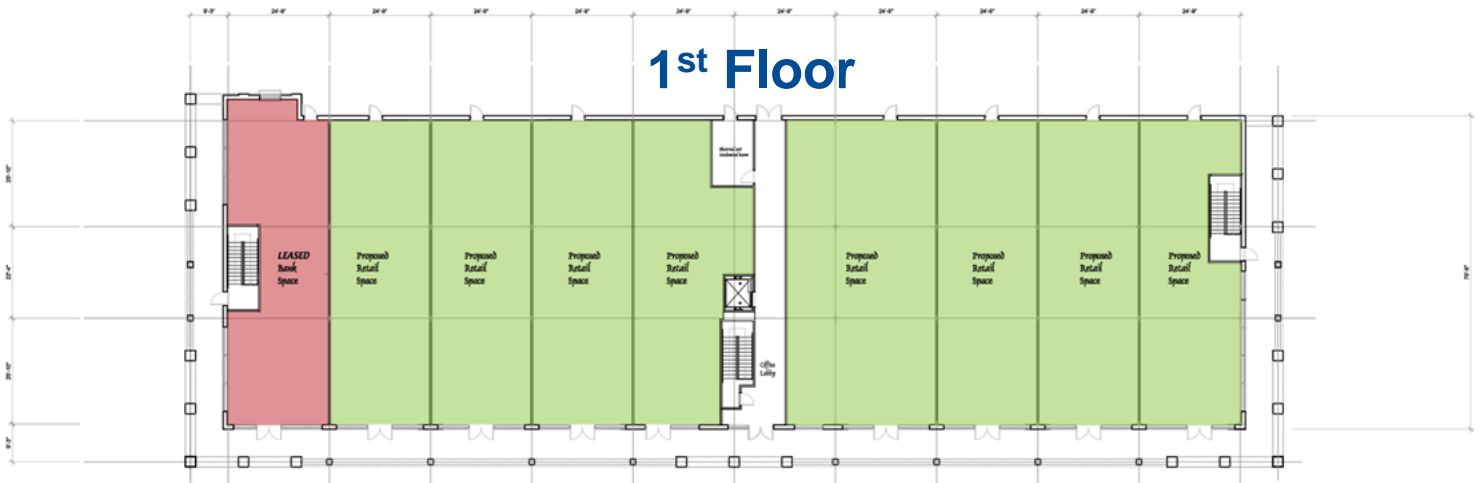
**For Sale or Lease**  
40,000 SF Retail / Office

**Meadowbrook Commons**

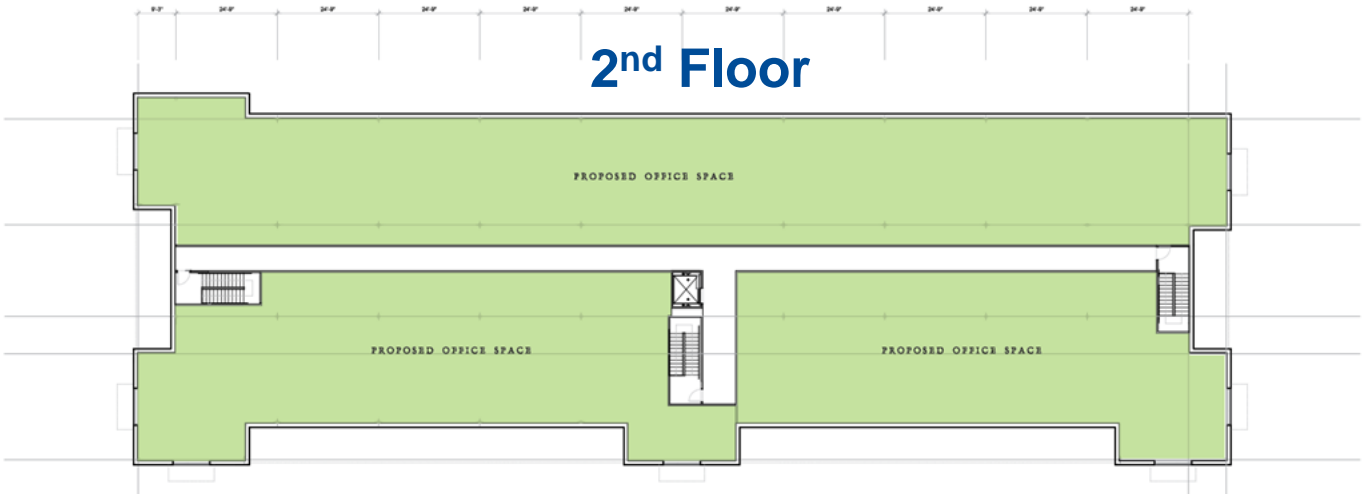
Robbinsville, NJ 08691



**1<sup>st</sup> Floor**



**2<sup>nd</sup> Floor**



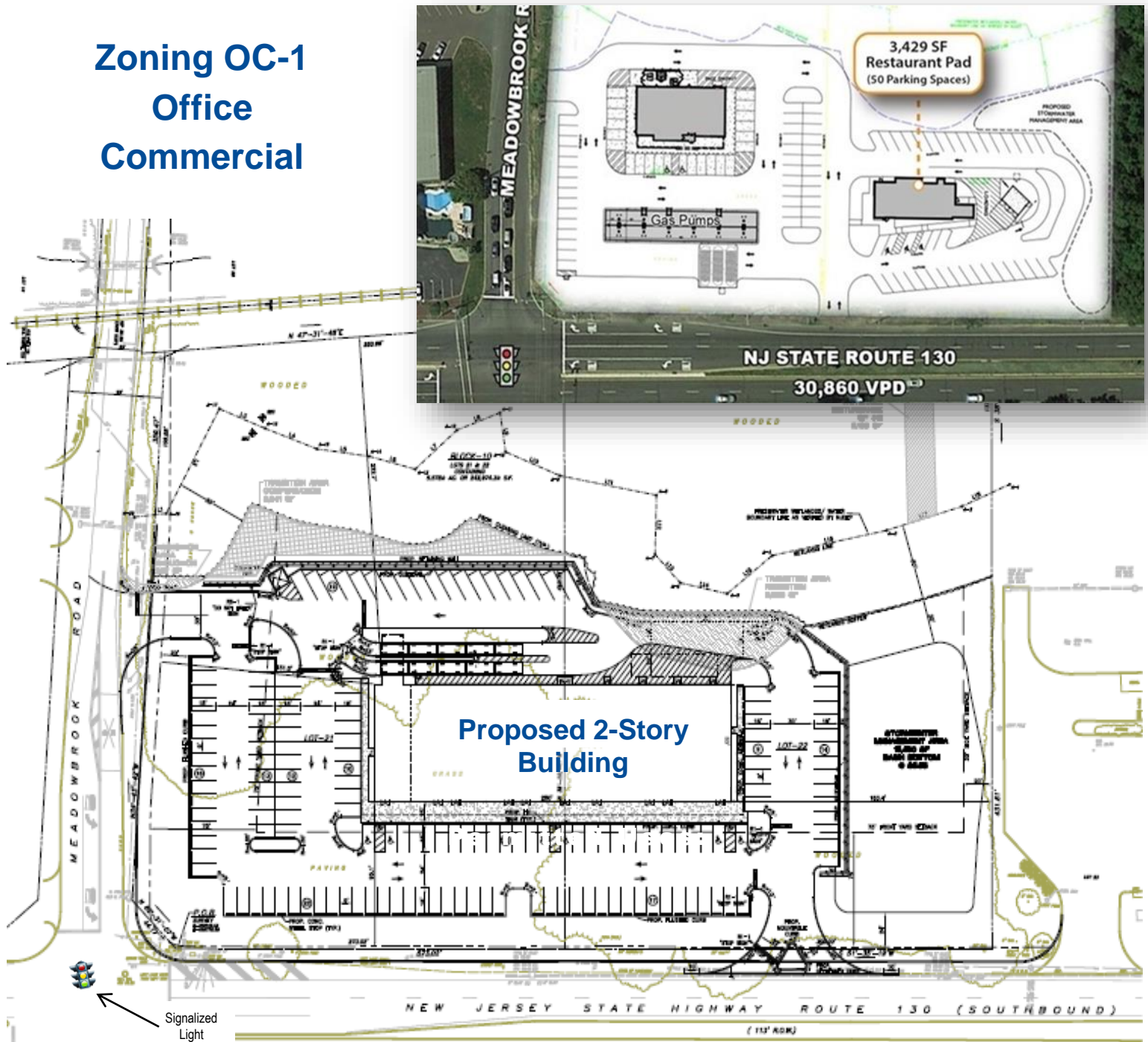


**For Sale or Lease**  
40,000 SF Retail / Office

## Meadowbrook Commons

Robbinsville, NJ 08691

**Zoning OC-1**  
**Office**  
**Commercial**



Approved uses:

Office  
Banking

Retail  
Church

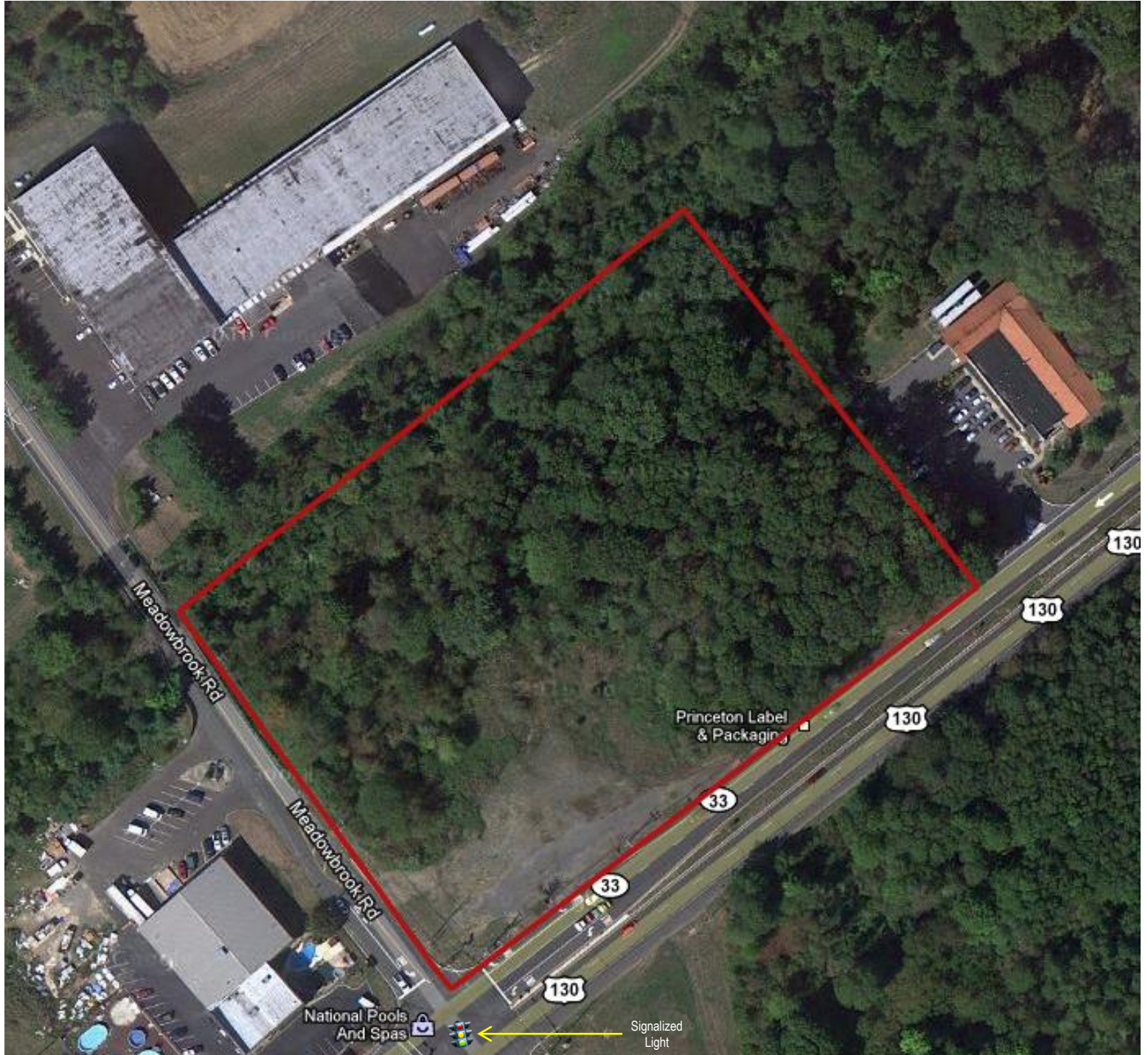
Medical  
Auto, etc



**For Sale or Lease**  
40,000 SF Retail / Office

## Meadowbrook Commons

Robbinsville, NJ 08691



**Located on heavily traveled Rt. 130/33 (approx. 400 ft frontage)  
near the intersection of Meadowbrook Rd**