



PREMIER
COMMERCIAL
PROPERTIES

FOR LEASE



Retail Office Space for Lease

13352 Aberdeen St. NE Ham Lake, MN

AREA

- Join Fitaholic & Blaine Family Chiropractic
- Suite B - 4000 SF - Wide open
- Signage & Visibility to Hwy 65 (Central Ave)
- 37,400 vehicles per day (MNDot 2020)
- SE Corner of Hwy 65 & Bunker Lake Blvd

Details

- Buildouts based on lease term



PROPERTY DETAILS

Lease Rate: 15.00/SF
CAM/Taxes: \$5.50/SF (2023)

FOR MORE INFORMATION, CONTACT

Marty Fisher/Mike Fisher

763-862-2005

mfisher@premiercommercialproperties.com

mikefisher@premiercommercialproperties.com



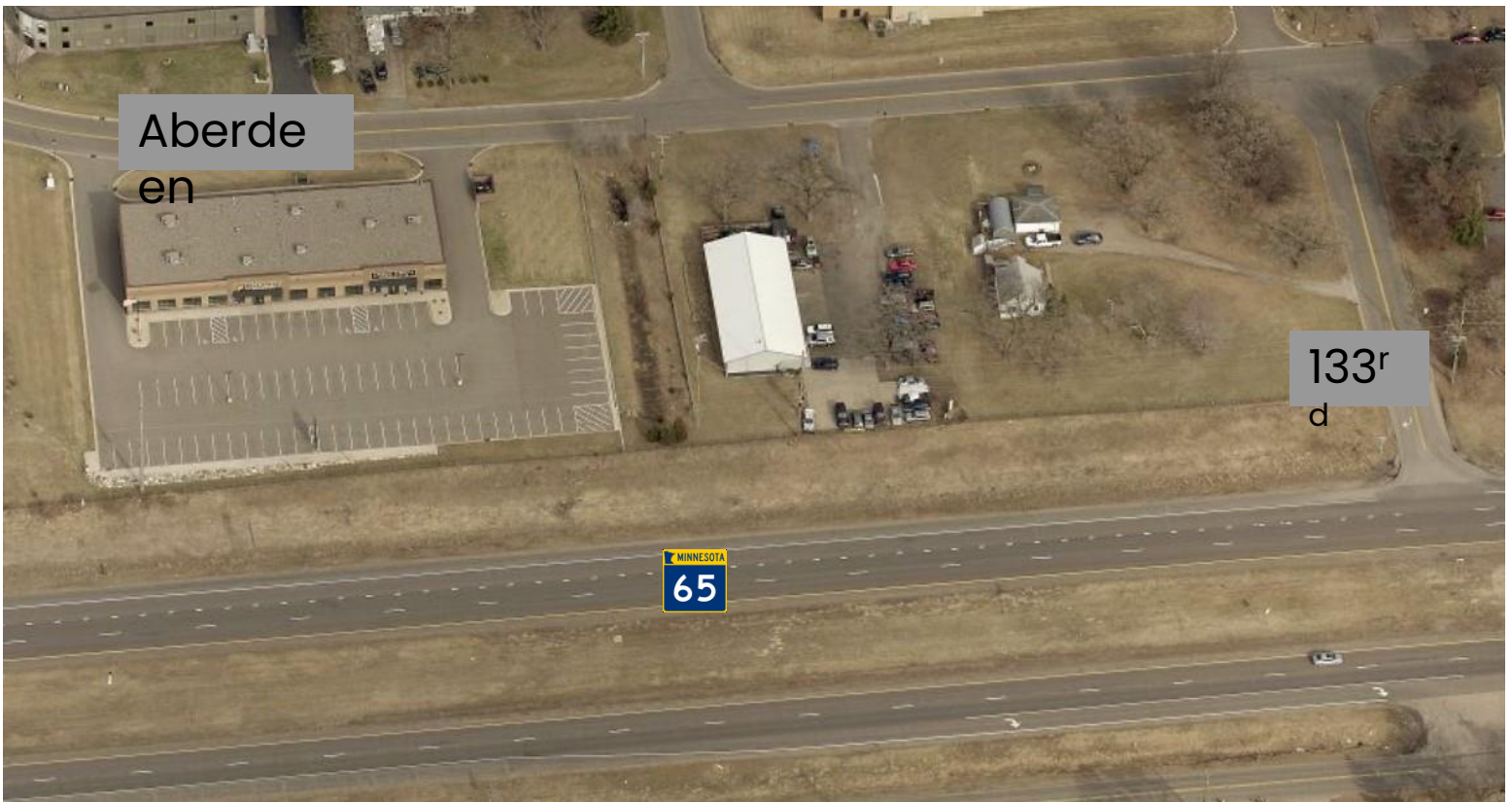
PREMIER
COMMERCIAL
PROPERTIES

FOR LEASE

CONTACT: Marty Fisher

MOBILE: 612-708-2873

EMAIL: mfisher@premiercommercialproperties.com



Aberdeen

133rd

MINNESOTA
65



PREMIER
COMMERCIAL
PROPERTIES

FOR LEASE

CONTACT: Marty Fisher

MOBILE: 612-708-2873

EMAIL: mfisher@premiercommercialproperties.com

Close to Bunker Lake Blvd

