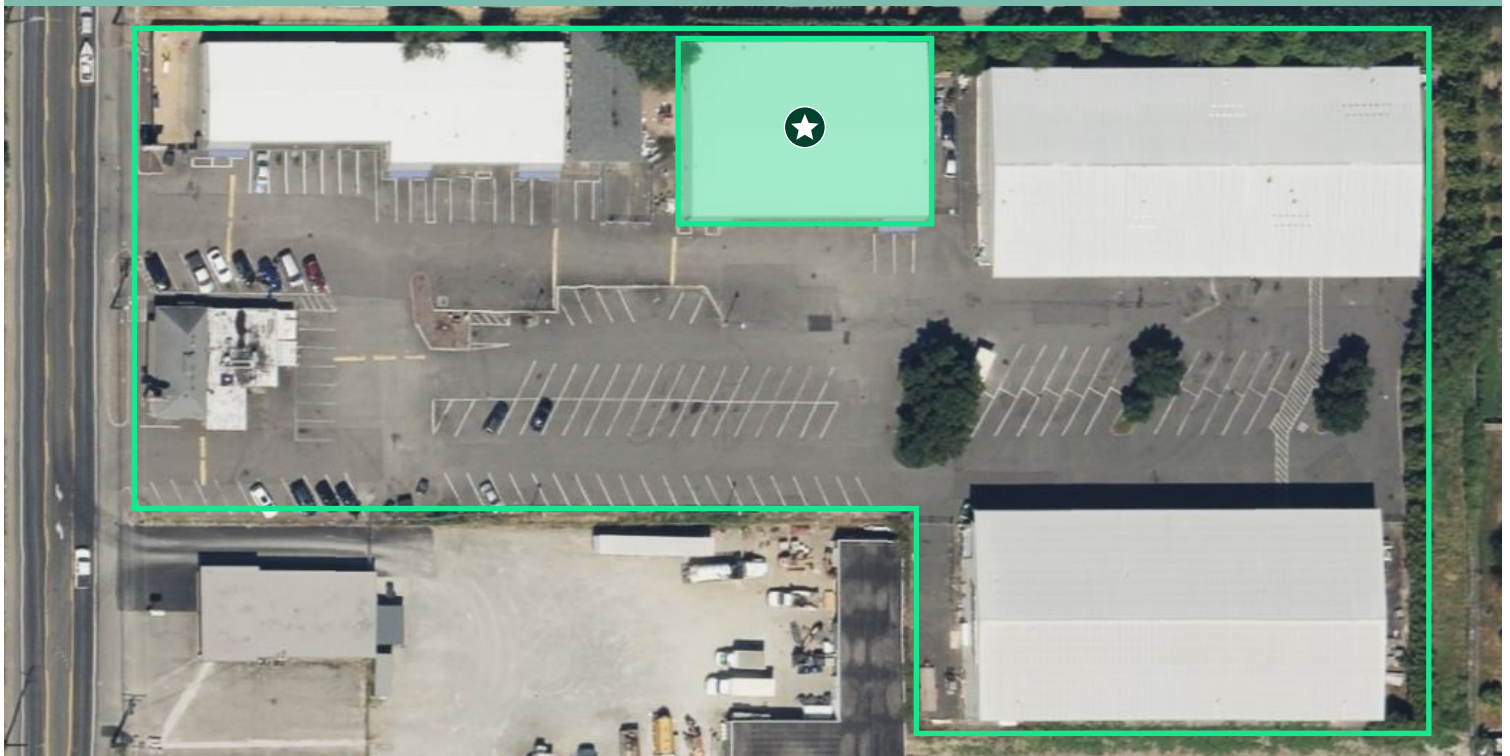


# Portland Ave Business Park

Available Now

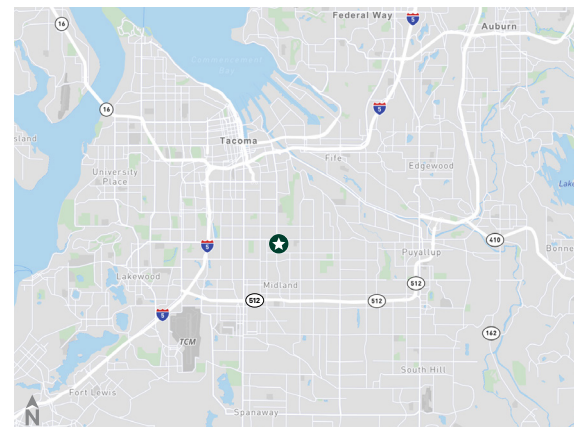
7505 Portland Avenue East  
Tacoma, WA 98404  
[www.cbre.com/tacoma](http://www.cbre.com/tacoma)

Available - Building 7505



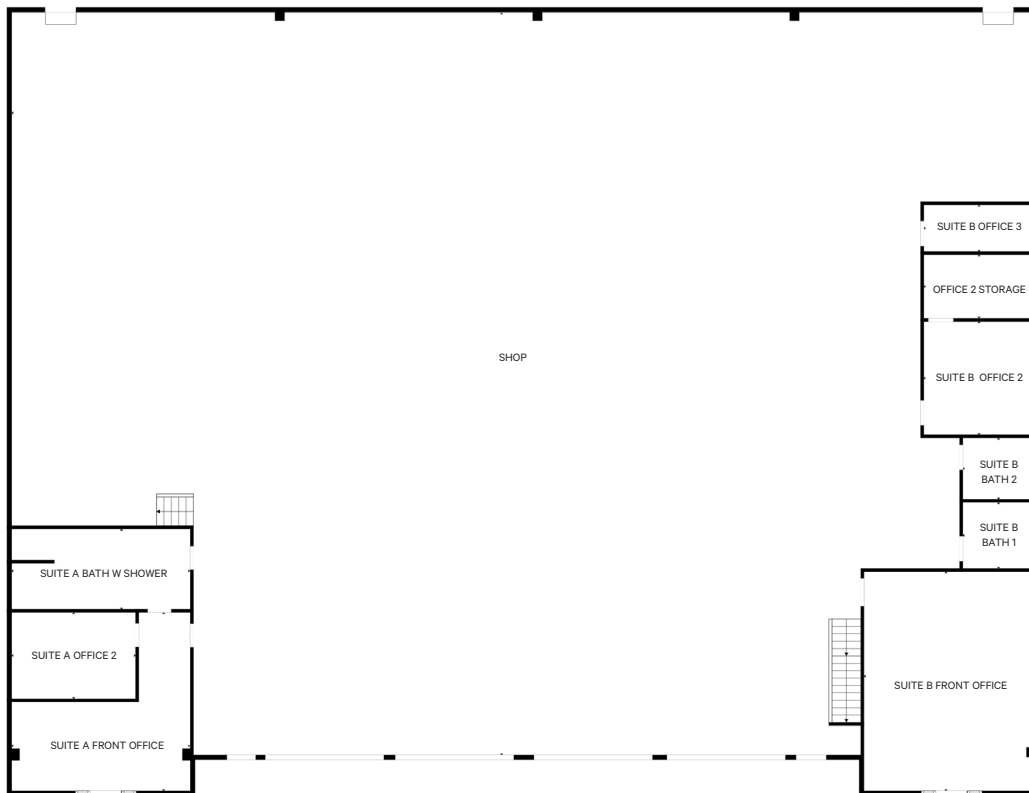
## Property Details

- + Total SF: 8,800 SF
- + Office SF: 1,400 SF of improved office area
- + 4 - 14' GL doors
- + 21' - 24' clear height
- + Easy access to I-5 and SR-512
- + Clear Span
- + Standalone building
- + 3-phase 208/120-volt power
- + Fenced side yard
- + Call brokers for lease rates





## Floor Plan



## Contact Us

**Monte Decker**

Senior Vice President  
+1 253 596 0041  
monte.decker@cbre.com

**Chris Cowles**

First Vice President  
+1 253 596 0048  
chris.cowles@cbre.com

**CBRE, Inc.**

1201 Pacific Avenue  
Suite 1502  
Tacoma, WA 98402

© 2026 CBRE, Inc. All rights reserved. This information has been obtained from sources believed reliable, but has not been verified for accuracy or completeness. You should conduct a careful, independent investigation of the property and verify all information. Any reliance on this information is solely at your own risk. CBRE and the CBRE logo are service marks of CBRE, Inc. All other marks displayed on this document are the property of their respective owners, and the use of such logos does not imply any affiliation with or endorsement of CBRE. Photos herein are the property of their respective owners. Use of these images without the express written consent of the owner is prohibited.