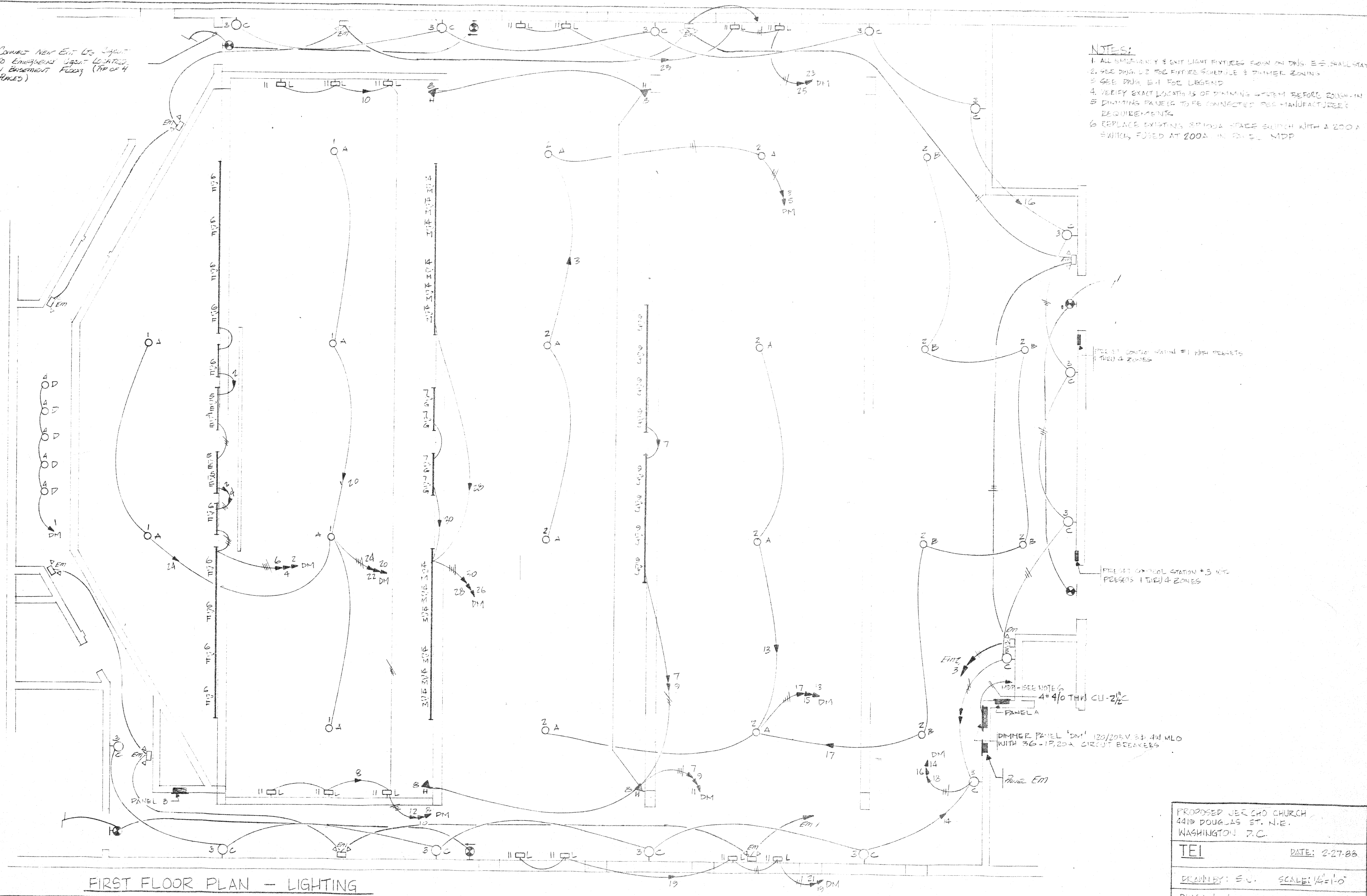


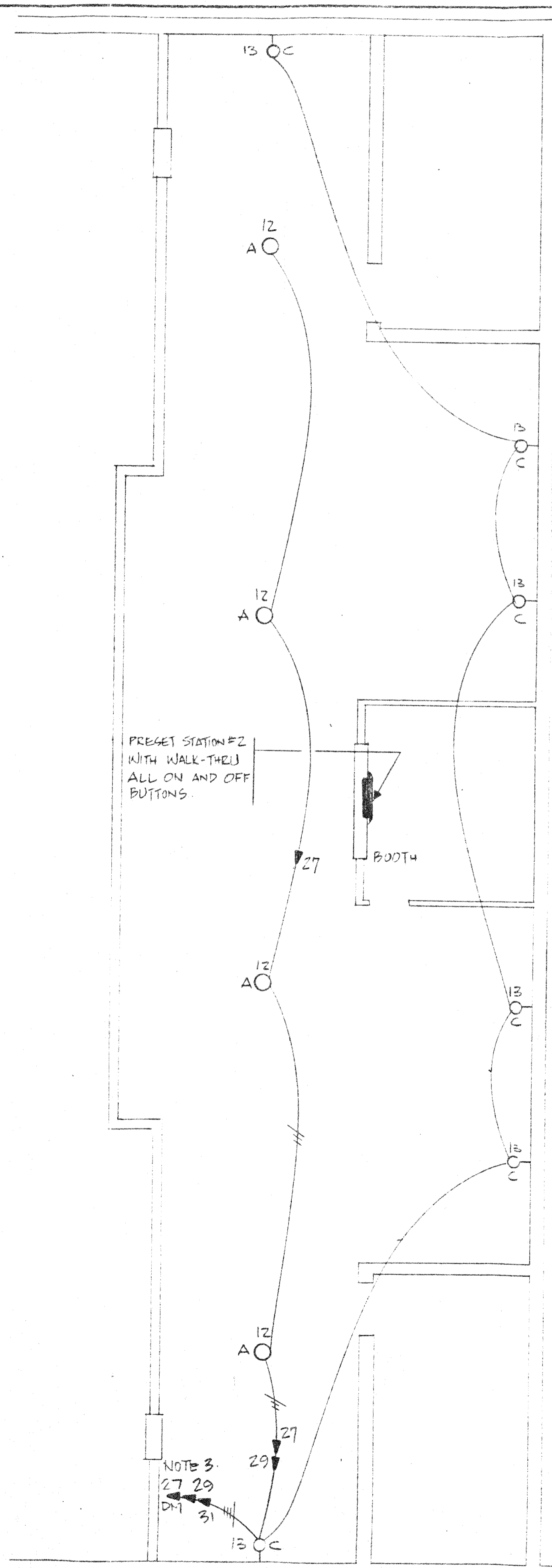
CONNECT NEW EXIT LGS INPUT TO EMERGENCY LIGHT CONTROL IN BASEMENT FLOOR (PER O&H RULES)

- NOTES:**
1. ALL EXISTING EXIT LIGHT FIXTURES SHOWN ON THIS E.P. SHALL STAY
 2. SEE DIM. L2 FOR EXIST. SCHEDULE & DIMMER ZONING
 3. SEE DIM. E-1 FOR LEGEND
 4. VERIFY EXACT LOCATIONS OF DIMMING SYSTEM BEFORE ROUGH-IN
 5. DIMMING PANELS TO BE CONNECTED PER MANUFACTURER'S REQUIREMENTS
 6. REPLACE EXISTING 300A STAGE SWITCH WITH A 200A SWITCH, FUSED AT 200A IN PANEL MDP

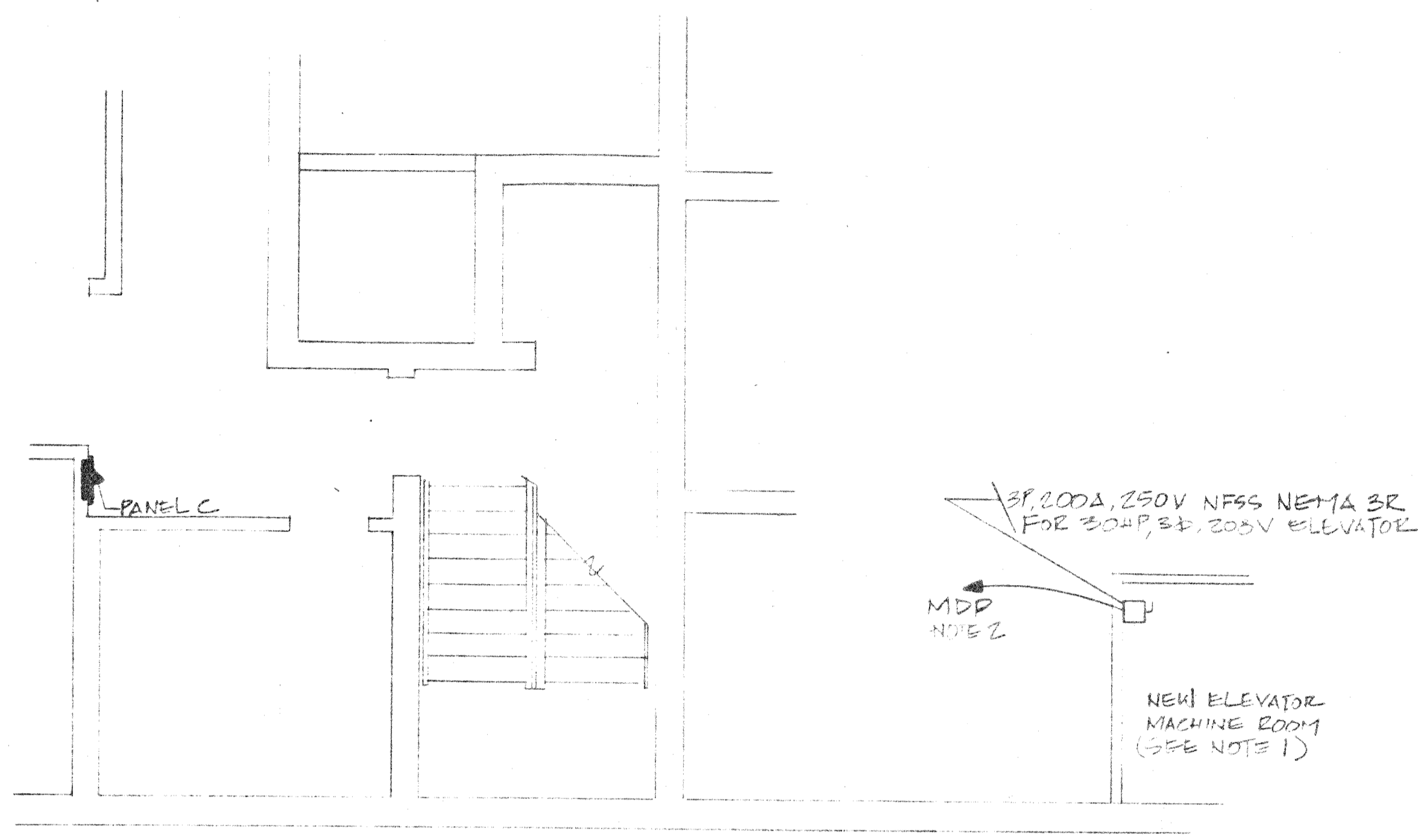


FIRST FLOOR PLAN - LIGHTING

PROPOSED JER CHO CHURCH 4419 DOUGLAS ST. N.E. WASHINGTON D.C.	
TEI	DATE: 2-27-88
DRAWN BY: S.C.	SCALE: 1/8"=1'-0"
DWG: L-1	



BALCONY FLOOR PLAN - LIGHTING

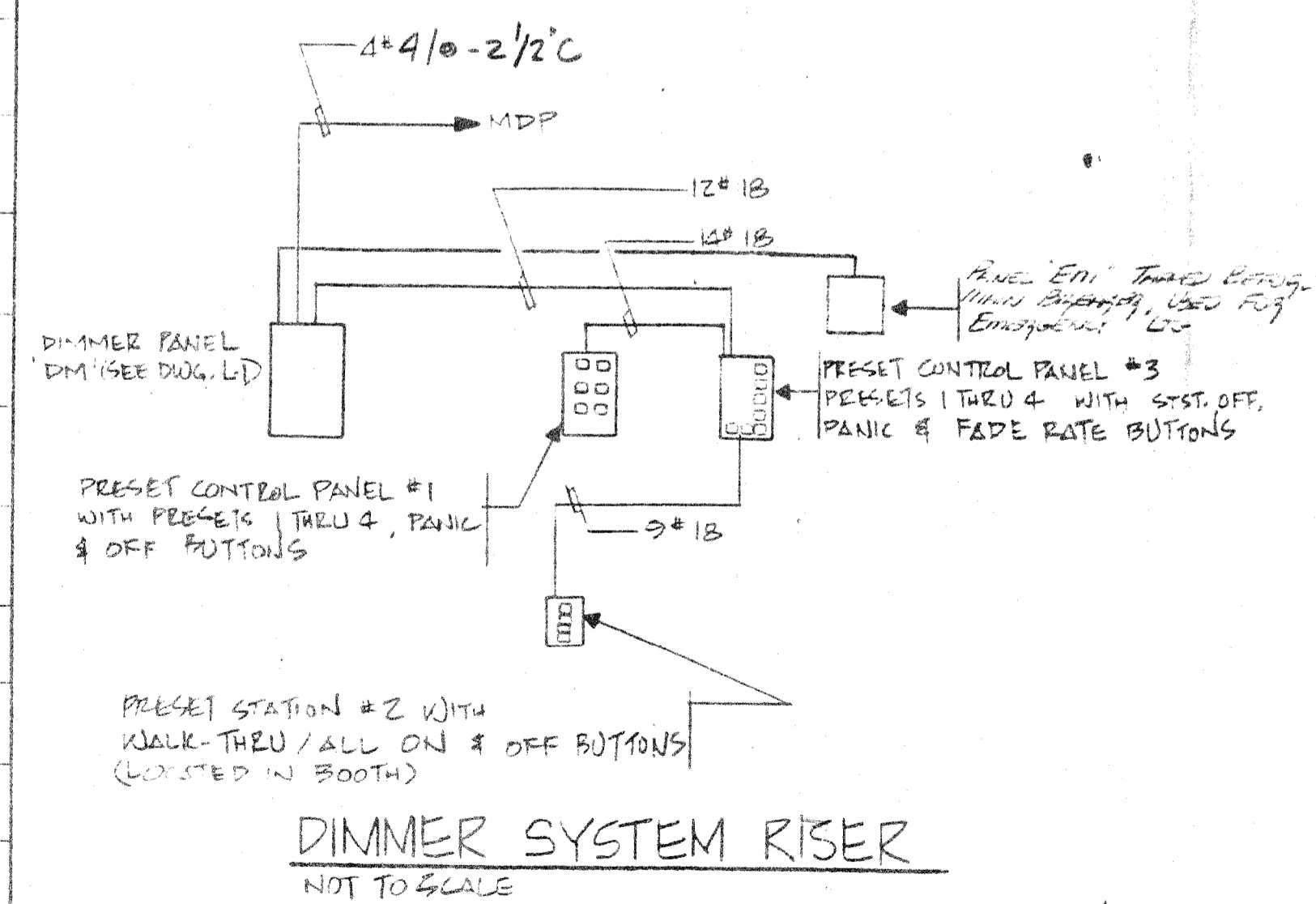


BASEMENT FLOOR PLAN - ELEVATOR MACHINE ROOM

NOTES:

1. RUN A 20A BRANCH CIRCUIT FROM PANEL 'A' TO ELEVATOR FIT LIGHT FIXTURE TYPE O AND DUPLEX RECEPTACLE. LIGHT SHALL BE CONTROLLED BY A LOCAL SWITCH.
2. CONNECT TO CIRCUIT WHICH WAS FEEDING PANEL A. REPLACE 200A FUSES WITH 170A DUAL ELEMENT FUSES. CONNECT PANEL A TO SPARE 100A CIRCUIT #3. PROVIDE 100A FUSES. FEEDER SIZE FOR PANEL A SHALL BE #2 THW CU-1/4" C.
3. SEE DXG. L4 FOR PANEL LOCATION AND ADDITIONAL NOTES.
4. PANEL A SHALL BE MODIFIED TO 3P, 4W, 120/208V, 100A MLO WITH 24-1P, 20 CIRCUIT BREAKERS.
5. FOR ADDITIONAL WORK SEE ELECTRICAL DRAWINGS E1 THRU E10.

CHURCH LIGHTING SCHEDULE				
DIMMING ZONE	FIXTURE TYPE	LAMP TYPE	MANUFACTURER CAT. NO	REMARKS
1	A	1-300W R-40 # 6-60W A-19	VISA CH 652 - SBZ	
2	A B	AS ABOVE 3-60W A-19	AS ABOVE. VISA CH 671 - SBZ	
3	C	2-100W A-19	VISA CH 681 - SBZ	
4	D	1-Q250 PAR 38	CAPRI ADGE-2502	
5	E	1-300W R40 SPOT	CAPRI-KT241-1-P KL3-KH3/KTBP/KAB	FUTURE
6	F	1-300W R40 FLOODS	CAPRI-KT241-1-P KL3-KH3/ (2) KTBP-KAHP/KAB	FUTURE
7	G	1-300W R40 SPOT	SAME AS TYPE E	FUTURE
8	H	1-300W R40 FLOODS	CAPRI-KT241-1-P KB-3/ KL3/KTBP/KABP	FUTURE
9	J	1-300W R40 SPOT	CAPRI-KT241-1-P KL3-KH3/ KTBP/KAB	FUTURE
10	K	1-300W R40 FLOODS	SAME AS TYPE G	NOT USED
11	L	1-400W HPS 1-400W MH	STERNER A 31-WM-F-EB- 400H-400S-120 PW	FUTURE
12	A	SEE TYPE A ABOVE	SEE TYPE A ABOVE	
13	C	SEE TYPE C ABOVE	SEE TYPE C ABOVE	
14	M	1-300W R40 FLOODS	SAME AS TYPE F	FUTURE



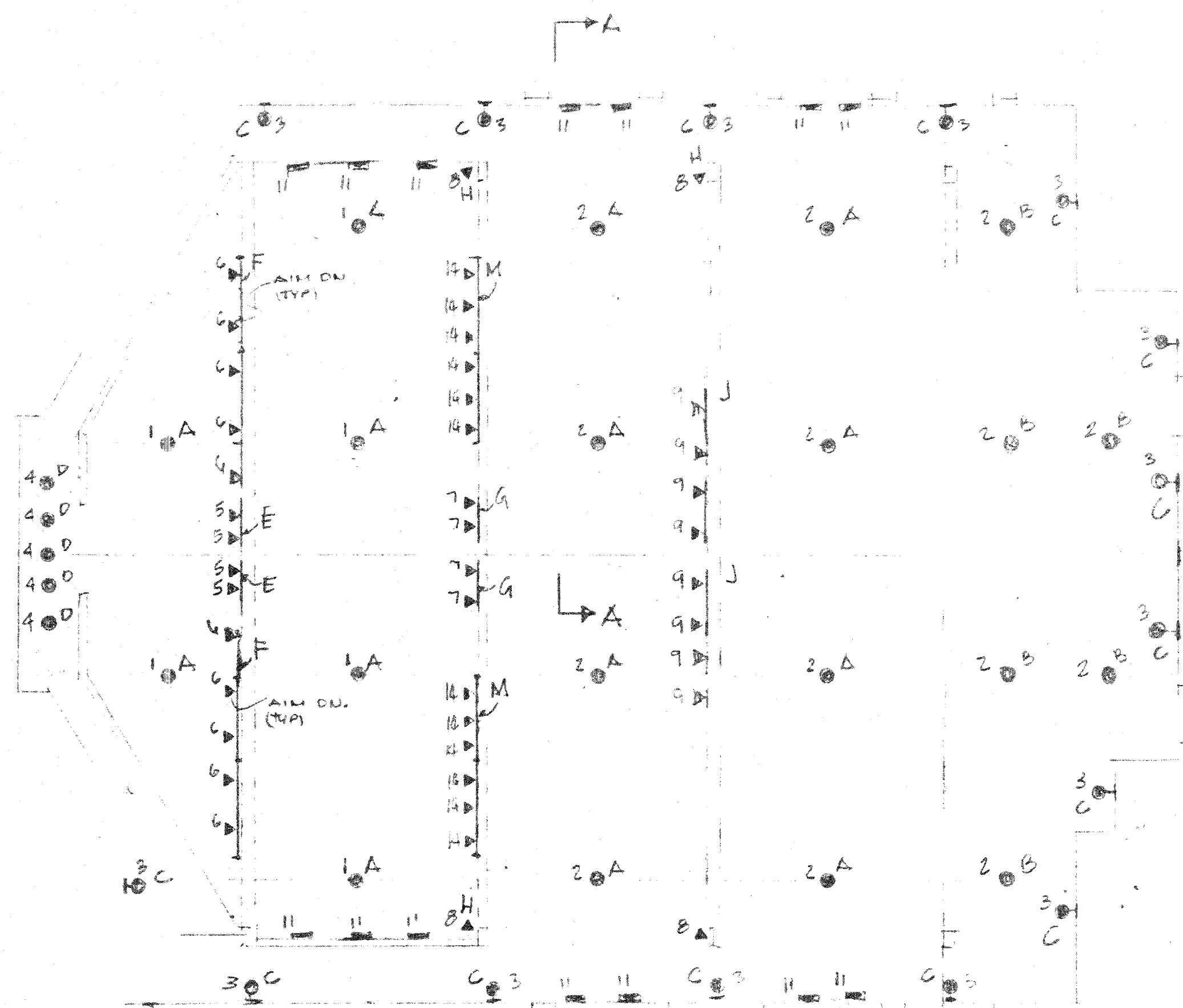
DIMMER SYSTEM RISER
NOT TO SCALE

PROPOSED JERICHO CHURCH
4419 DOUGLAS ST. N.E.
WASHINGTON D.C.

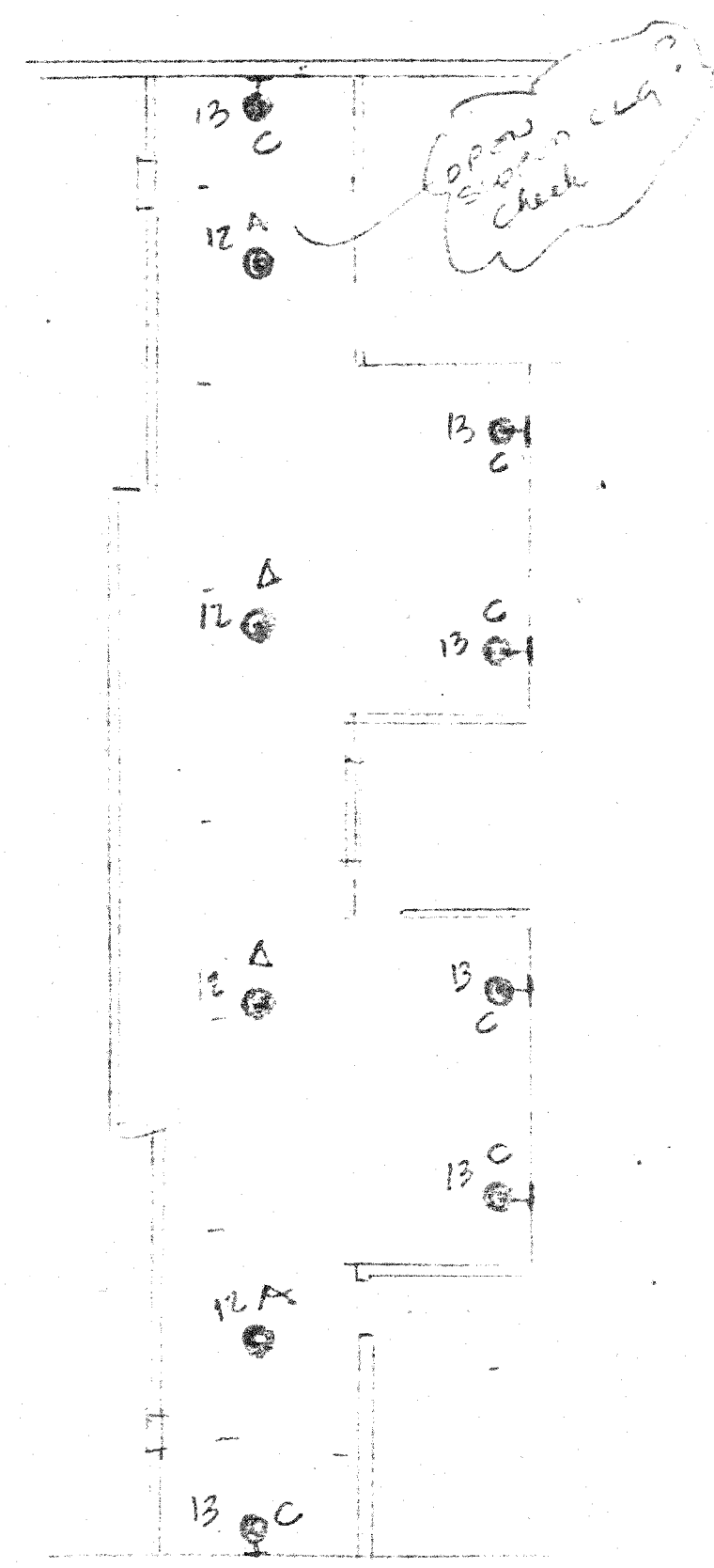
TEI DATE: 2-27-88

DRAWN BY: S-U SCALE: 1/4"=1'-0"

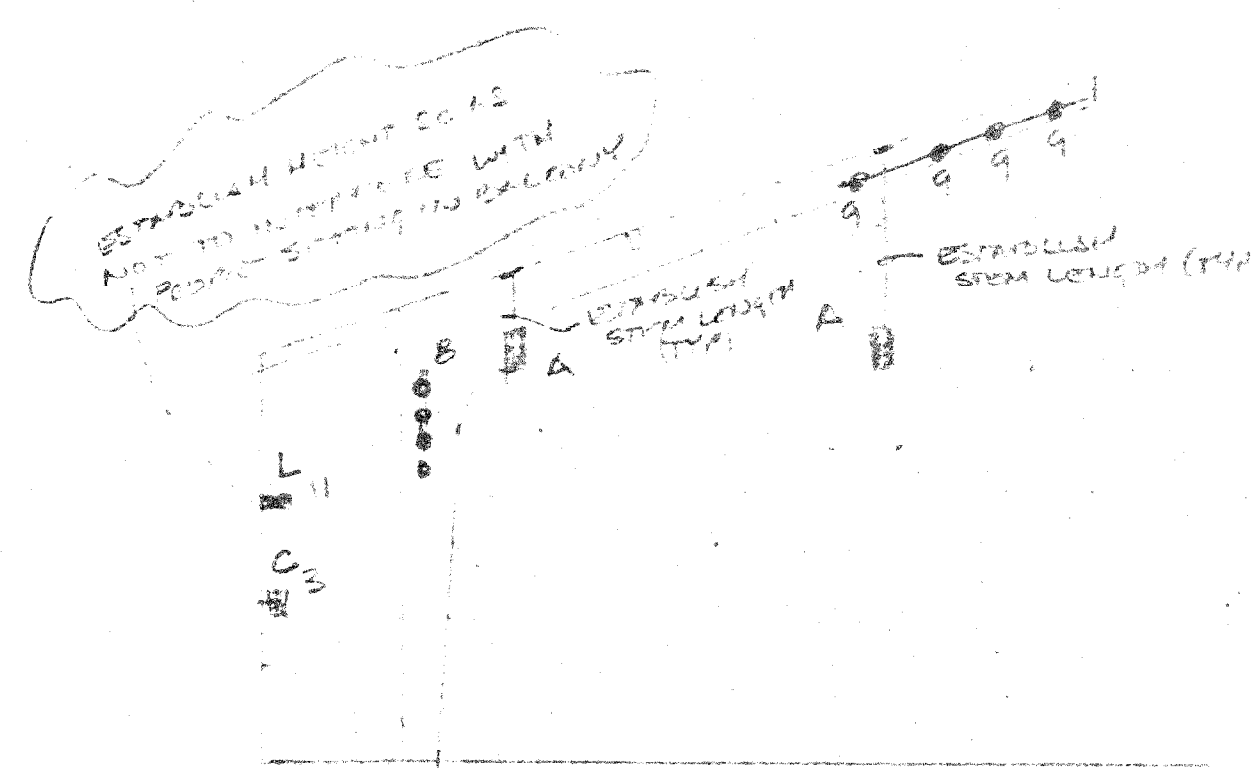
DWG: L-2



FIRST FLOOR LIT. PLAN



BALCONY LIT. PLAN



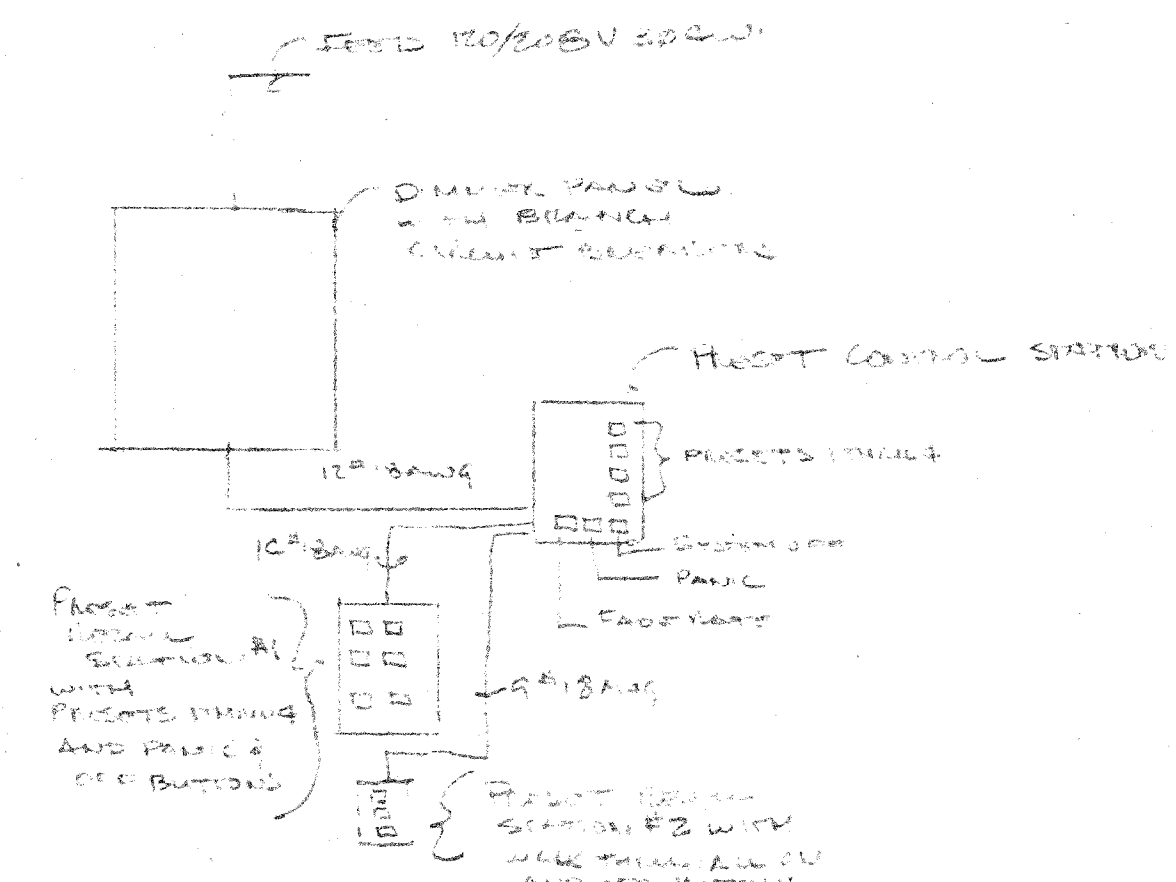
SECTION A-A

CHURCH LIGHTING SCHEDULE

QTY	DESCRIPTION	WATTS	LAMP WATTAGE	FIX. RATE	UPPER CUT #
1	SANCTUARY PENDANT FIXTURES	(2) 6600 = 39600	1200W U-402 6' DOWNHANG	A	VISA CH 652-SB2
2	CONGREGATION PENDANT FIXTURES & DOWNLIGHTS AT UNDERLINE OF BALCONY	(14) 6600 = 92400 (15) 1800 = 27000	1200W U-402 6' DOWNHANG 3-400W U-197 1' DOWN	A	VISA CH 671-SB2
3	WALL SCENE	(15) 200 = 3000	2-100W A-11	C	VISA CH 51-SB2
4	BAPTISTERY DOWN LIGHTS RECESSED ADJUSTABLE TRACK DOWNLIGHTS	(5) 250 = 1250	250W P-130	D	CAPRI ADDL 2502
5	BAPTISTERY SPOTS (TRACK MTD. ADJUSTABLE)	(4) 300 = 1200	300W 240 SPOT	E	CAPRI-KT201-IP KL3-KL3/ KT4P/KAB
6	CHOIR SPOTS (TRACK MTD. ADJUSTABLE)	(10) 300 = 3000	300W 240 SPOT	F	CAPRI-KT201-IP KL3-KL3/ (3) KT2P-KA11P/KAB
7	PULPIT SPOTS (LOCATION TO BE VERIFIED)	(1) 200W = 200 (1) 200W = 200	300W 240 SPOT	G	CAPRI-KT201-IP KL3-KL3/ KT4P/KAB
8	SANCTUARY SIDE SPOTS BATCH LOCATION (4) ADJUSTABLE ON 8' TRACK - VOTIVE MTD	(2) 300 = 600 (2) 240 = 480	300W 240 SPOT	H	CAPRI-KT201-IP KL3-KL3/ KT4P/KAB
9	SANCTUARY SPOTS (TRACK MTD. ADJUSTABLE)	(2) 300 = 600	300W 240 SPOT	I	CAPRI-KT201-IP KL3-KL3/ KT4P/KAB
10	ALTER SPOTS (TO BE LOCATED)	(4) 300W = 1200	300W 240 SPOT	J	SAME AS TYPE G
11	INDIRECT WALL MTD BATCH (1) 1465W WATT (1) 400W WATT & (1) 400W WATT (1) 400W WATT FROM U-197	13020	(1) 400W WATT (1) 400W WATT	K	STANDARD A31-400W-E-50-400W-COOS 100 PV.
12	BALCONY - CONGREGATION PENDANT	(4) 660 = 2640	660W TYPE A MTD	A	SEE TYPE A ABOVE
13	BALCONY WALL SCENE	(6) 200 = 1200	200W TYPE B MTD	B	SEE TYPE B ABOVE
14	CHOIR SPOTS (TRACK MTD. ADJUSTABLE)	(12) 300 = 3600	300W 240 SPOT	M	CAPRI-KT201-IP KL3-KL3/ (3) KT2P/KAB/KA11P

* LAMP + BALLAST LOSS 57240 TOTAL WATTS

NOTE: THE PROPOSED LIGHTING HAS BEEN DIVIDED INTO 14 GROUPS THAT WILL ILLUMINATE THE ARCHITECTURE OF THE SPACE, AND CREATE LIGHTING SCENES FOR THREE REGULAR EVENTS - SERVICES, CHOIR, AND COMMUNION - PLUS 4TH SETTING THAT'S ASSIGNED FOR SPECIAL BUT REPEATABLE FUNCTION.



DIMMER SYSTEM PLAN

COST ESTIMATES

1. DIMMER SYSTEM	140,000
2. TRACK LIT.	8,000
3. PENDANT DOWNLIGHTS	20,000
4. WALL SCENES	11,000
5. INDENT MTD	12,000
TOTAL	\$91,000

ERICO CHURCH
2419 DOUGLAS ST. N.E. WASH. DC

12-22-87

PRELIMINARY - CHURCH AREA LITG.
ASSOC. CAMPBELL
M. J. ...